

DESIGN NOTES

- STANDARDS: AASHTO LRFD BRIDGE DESIGN SPECIFICATIONS, 8TH EDITION, WITH 2022 CALTRANS AMENDMENTS, CITY OF LOS ANGELES BUREAU OF ENGINEERING STANDARD PLAN S-601-3, MANUAL PART H, ASTM C-857. STRUCTURAL CALCS. #34.109A.
- MATERIAL: CONCRETE, F_c=5,500 PSI. MIX 30 INCLUDE FLY ASH AND DCI. REINFORCEMENT PER ASTM A-706, F_y=60,000 PSI.
- LOADS: VERTICAL LIVE LOAD: AASHTO HL-93. LIVE LOAD SURCHARGE: LA BOE PART H, FIGURE H 374.2A, MINIMUM 80 PSF (TO BOTTOM OF VAULT). SOIL LATERAL LOADS: 40 PCF (DRY), 81 PCF (SATURATED). SOIL BEARING CAPACITY = 1700 PSF. DESIGN SOIL DENSITY IS 120 PCF.
- LOADS NOT INCLUDED: DESIGN DOES NOT INCLUDE COOPER E-80 RAILROAD LOADS OR LATERAL OR SURCHARGE LOADS THAT ARE PRODUCED BY FOOTING OR FOUNDATIONS ADJACENT TO THE STRUCTURE. THIS SUBSTRUCTURE SHALL BE KEPT AT LEAST IN A 1:1 RATIO AWAY FROM ALL FOOTINGS AND FOUNDATIONS, UNLESS THE ENGINEER OF RECORD APPROVES IN WRITING.
- EACH CONCRETE SECTION SHALL BE MARKED ON THE INSIDE & OUTSIDE WITH "JENSEN PRECAST-FONTANA", AT&T OIN# AND THE DATE OF POUR. CONFORM TO STANDARD PLAN S-601-3 SECTION 3-2.1.1(e).
- EACH CONCRETE SECTION SHALL HAVE CAST-IN ON THE INSIDE "JENSEN", AND THE YEAR.
- ALL WALLS AND CEILING SHALL BE PAINTED WHITE.
- EACH PIECE TO BE STENCILED WITH ITS PART NO.
- INSTALLATION: VAULT TO BE PLACED ON A MIN. 6" BASE OF CRUSHER RUN FOR EASE OF INSTALLATION AND EVEN LOAD DISTRIBUTION. BASE MATERIAL IN ACCORDANCE WITH SECTION 200-2 OF THE SSPWC (GREEN BOOK).
- MINIMUM EXCAVATION SIZE: 9'-0" X 18'-0" X DEPTH REQ'D.
- ADDITIONAL SUBMITTAL, PERMIT AND CONSTRUCTION PLAN REVIEW WILL BE REQUIRED FOR EACH PROJECT LOCATION. SUBMIT TO CITY ENGINEER FOR APPROVAL PRIOR TO START OF ANY CONSTRUCTION.
- ALL INSTALLATIONS SHALL COMPLY WITH ALL OTHER LOCAL GOVERNING CODES AND REGULATIONS INCLUDING CALIFORNIA PUBLIC UTILITIES COMMISSION REGULATIONS.
- REFERENCE K36X-MN12-LA-09 FOR GRADE RINGS TO BE USED WITH VAULT.
- CAST IRON FRAME & COVER AS APPROVED BY CITY OF LA.

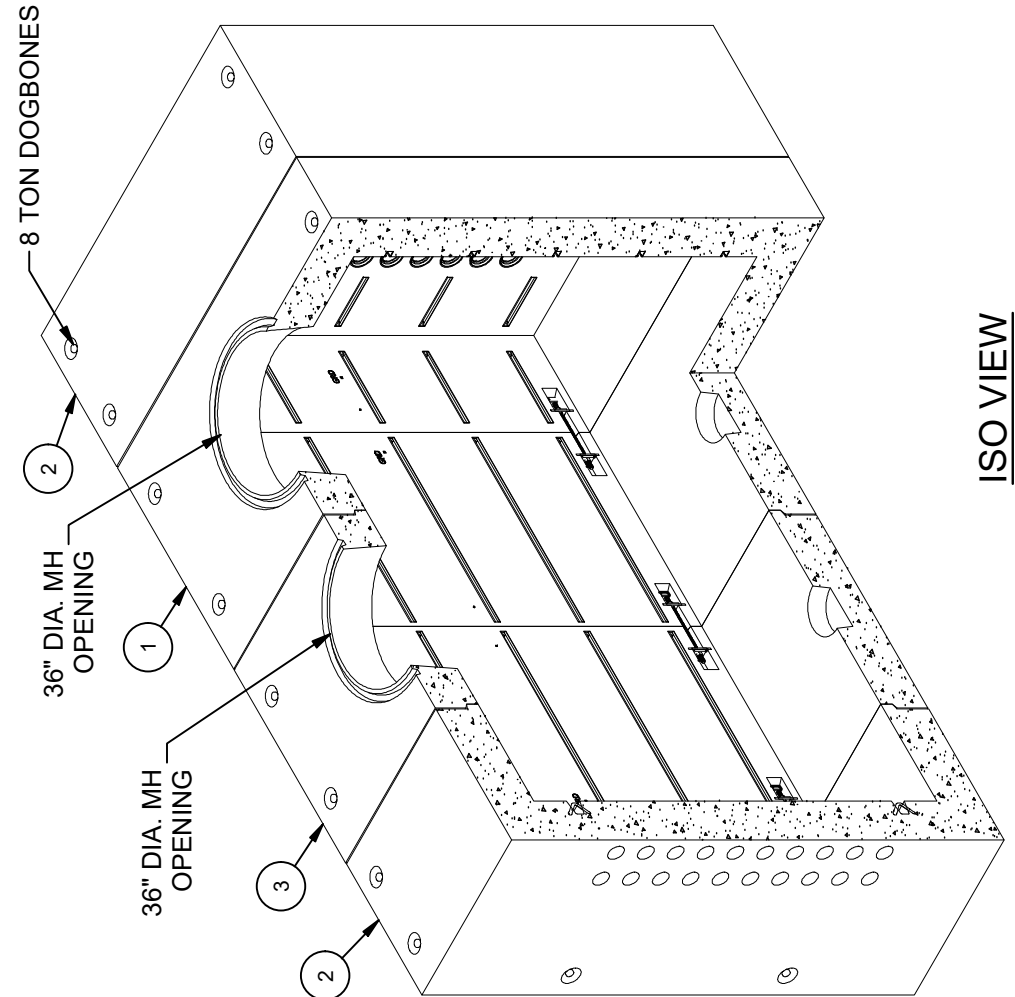
**STOCKPILE - JENSEN PRECAST
CITY OF LOS ANGELES INSPECTION
REQUIRED WO# C0034604**

LIFTING NOTES

- FIELD INSTALLATION: PLANT DEMOLDING: MINIMUM HANDLING CONCRETE STRENGTH F_c = 5500 PSI RIGGING EQUALIZER REQUIRED TO EQUALIZE LOAD TO 4 LIFTING POINTS WITH A SLING ANGLE BETWEEN 60° AND 90°
- BURY DEPTH: 1.5' - 5.0' to Top
- WATER LEVEL: 3.0'
- APPROX. WEIGHT: 98997.27 Lbs
- DESIGN SPEC: AASHTO LRFD/ACI 318, ASTM C857
- LOADING SPEC: AASHTO HL-93
- AGENCY: AT&T
- AGENCY SPEC: COLA

BILL OF MATERIALS

ITEM	UNIT QTY	QTY	PART NUMBER	DESCRIPTION	MASS (lb)
1	1	1	100013030	Tunnel Vault TV72108 Center - Groove Groove 72Wx108Hx60L AT&T COLA	24948
2	1	2	100013029	Tunnel Vault TV72108 End - Tongue 72Wx108Hx30L AT&T COLA	24942
3	1	1	100013032	Tunnel Vault TV72108 Extension 72Wx108Hx60L AT&T COLA	24111
4	1	12	100007114	ROD THREADED COIL YELLOW DIP 3/4 X 20"	
5	1	24	100008121	WASHER 3X3X.5 W.875 HOLE GALV	
6	1	24	100007010	HEX COIL NUT 3/4-4.5 POST YELLOW DIP	
7	103.000 ft	103.000 ft	100007104	BONDING RIBBON 3/8 12A55	
8	4.000 gal	4.000 gal	100006420	COATING PAINT LATEX WHITE	
9	1.000 ul	1.000 ul	100005749	SEALANT JOINT BUTYL RUBBER ASTM C-990 AND M198 CS-102 1IN EQUIV X14.5FT PER BOX 118FT	



ISO VIEW

DESCRIPTION	AT&T OIN#
6x9x2-6 MODULAR MANHOLE END CAP W/RACKING	100061966-LA
6x9x5 MODULAR MANHOLE CENTER W/ACCESS & RACKING	100061967-LA

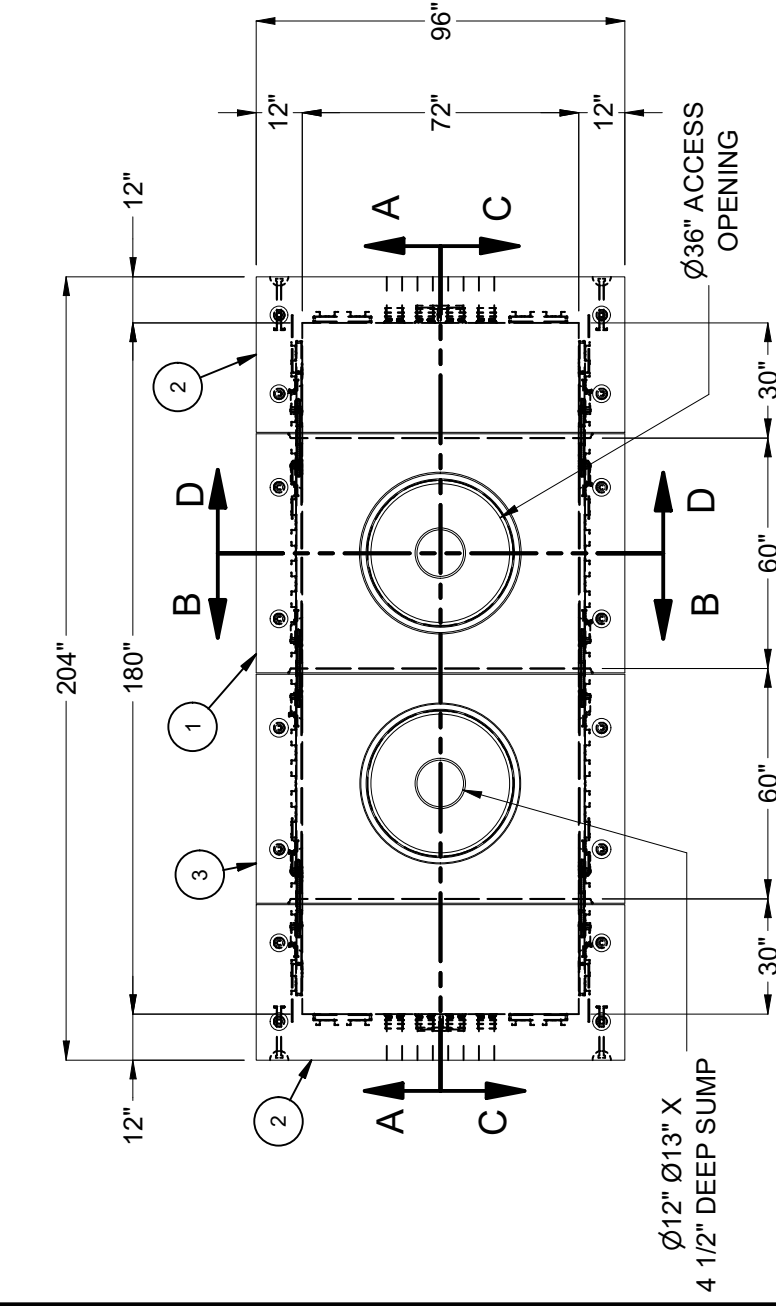
REVISION HISTORY

REV	DESCRIPTION	DATE	APPROVED
B-3	ADDED INSERT FOR TUNNEL VAULT BRACKET	11/30/2023	

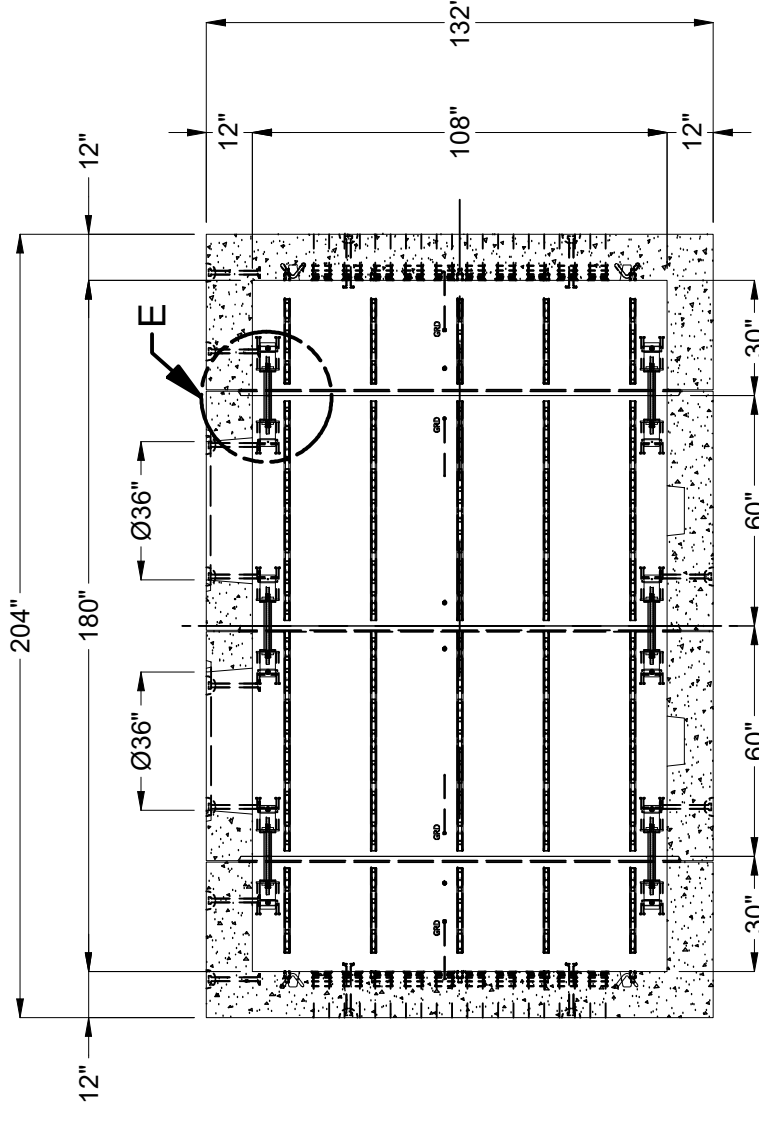
DESCRIPTION:	Tunnel Vault 72108X15' Layout Assembly AT&T COLA
REV:	B-3
PART NUMBER:	100013021
DRAWN BY:	S. Rodarte
CREATED:	11/13/2020
MODIFIED:	11/30/2023
LAYOUT REVIEW	
SHEET:	2
1 OF 2	

©2023 Jensen Precast. All rights reserved. All materials appearing as Jensen Precast documents and the like are proprietary work product and are protected under U.S. copyright and other laws. Unless in conjunction with business conducted with Jensen Precast, any use of Jensen Precast work product without express, written consent is prohibited, and recipient is prohibited from distributing any and all work product to non-approved third parties under penalty of civil action.

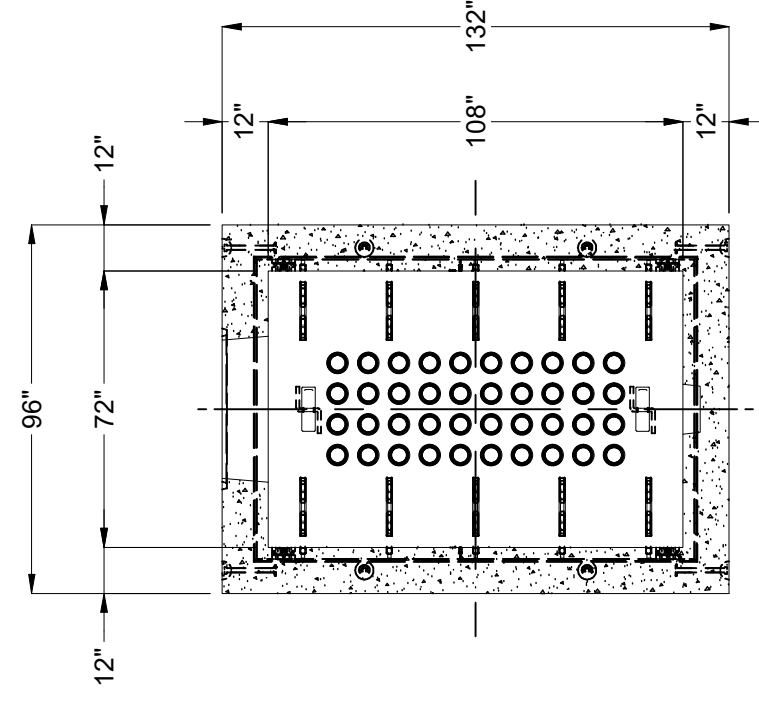
JENSEN PRECAST EST. 1968
WWW.JENSENPRECAST.COM



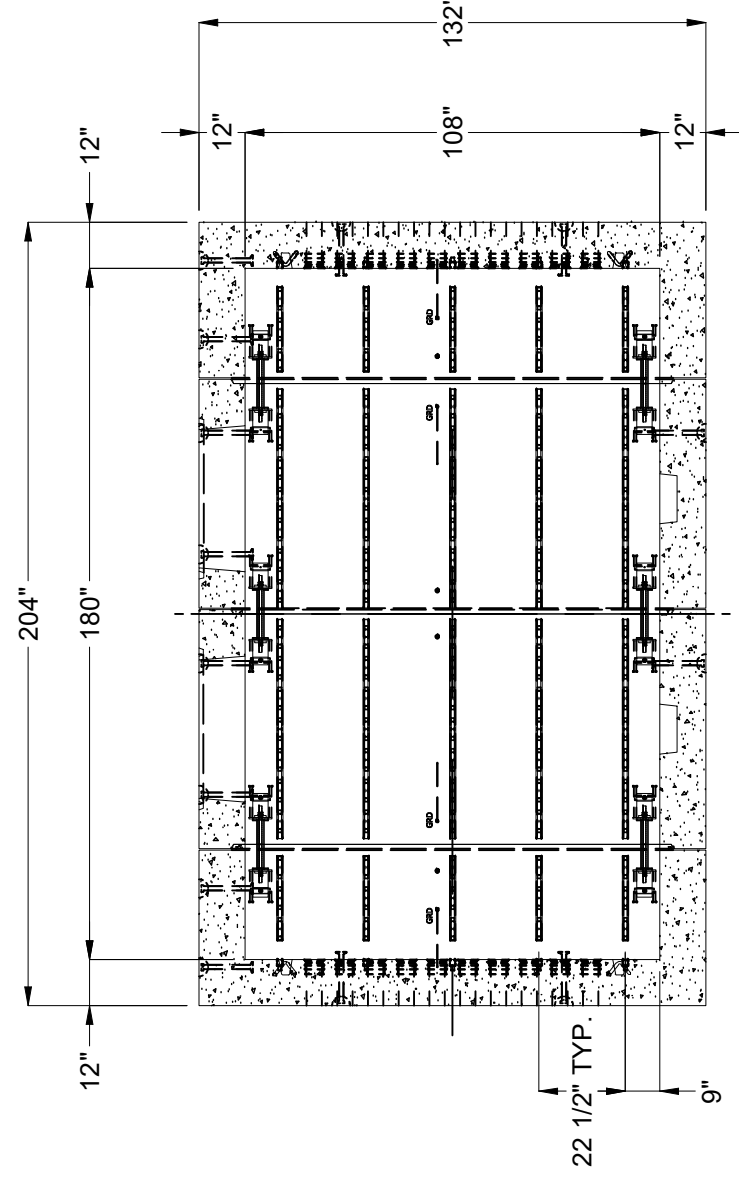
PLAN VIEW



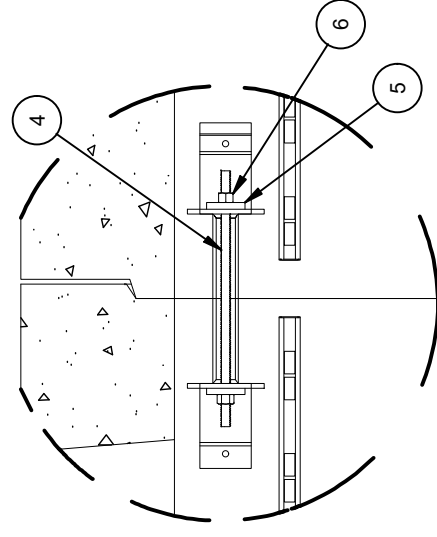
SECTION A-A



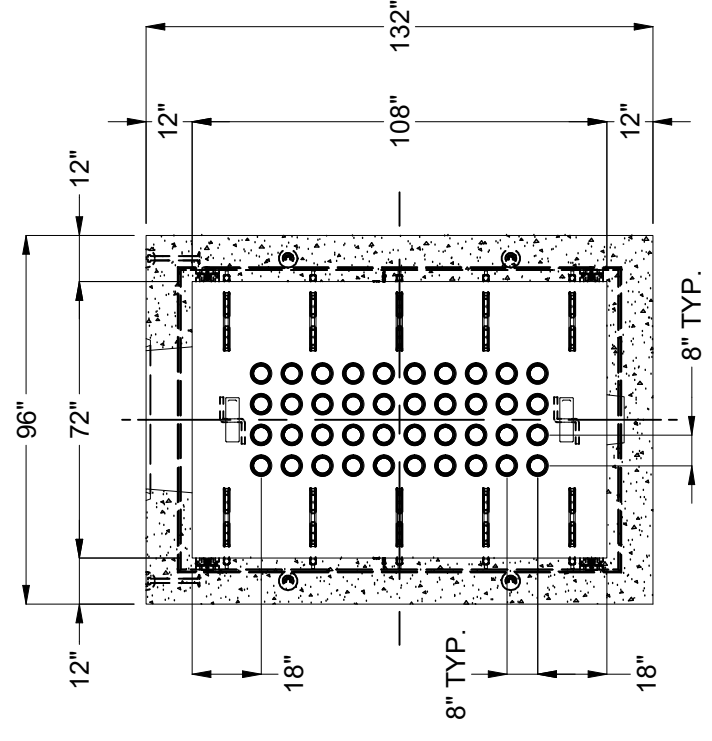
SECTION B-B



SECTION C-C



DETAIL E
FOR SETTING SECTIONS
(NON-STRUCTURAL)



SECTION D-D

BURY DEPTH:	1.5' - 5.0' to Top
WATER LEVEL:	3.0'
DESIGN SPEC:	AASHTO LRFD/ACI 318, ASTM C857
AGENCY:	AT&T
APPROX. WEIGHT:	98997.27 Lbs
LOADING SPEC:	AASHTO HL-93
AGENCY SPEC:	COLA

©2023 Jensen Precast. All rights reserved. All materials appearing as Jensen Precast documents and the like are proprietary work product and are protected under U.S. copyright and other laws. Unless in conjunction with business conducted with Jensen Precast, any use of Jensen Precast work product without express, written consent is prohibited, and recipient is prohibited from distributing any and all work product to non-approved third parties under penalty of civil action.

JENSEN PRECAST EST. 1968
WWW.JENSENPRECAST.COM

DESCRIPTION:	Tunnel Vault 72108X15' Layout Assembly AT&T COLA
LAYOUT DRAWING	
PART NUMBER:	100013021
CREATED:	11/13/2020
DRAWN BY:	S. Rodarte
MODIFIED:	11/30/2023
REV:	B-3
SHEET:	3
	2 OF 2