

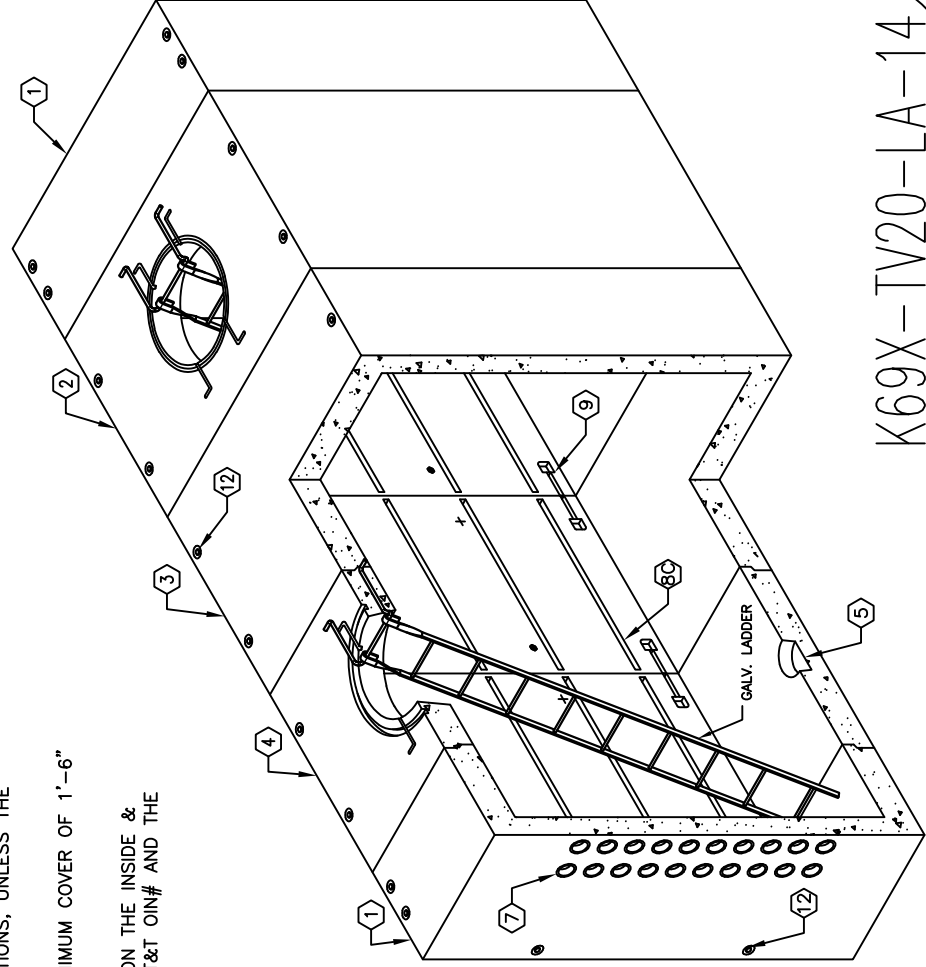
6'-0" x 9'-0" FLAT WALL TUNNEL MANHOLE x 20'-0" LONG

ITEM	PART NO.	DESCRIPTION	CAGE NO./ LOCATE	WEIGHT/ MOUNT
1	TV69X-E30-LA-14	(2) 30" END SECTION	CG-69X-E30-LA-14	25,450 lbs
2	TV69X-C60-LA-14	60" CENTER SECTION WITH OPENING	CG-69X-C60-LA-14	24,650 lbs
3	TV69X-R60-LA-14	60" EXTENSION SECTION	CG-69X-R60-LA-14	25,550 lbs
4	TV69X-R60-LA-140	60" EXTENSION SECTION WITH OPENING	CG-69X-R60-LA-140	24,640 lbs
5	KNOCK OUT	13" x 12" DIA. SUMP x 4 1/2" DEEP	CENTER SECTION EXTEN. w/OPNG SECTION	(1) CORE (1) CORE
6	55-35-03	7/8" DIA x 3 3/8" GALV. PULL IRON	END SECTION	(2) CORE
7	50-30-43	4" DIA. CONDUIT CONTERM SLEEVE 4.35"-4.5" I.D. STEPPED	END SECTION	(40) SURFACE
8A	55-21-015	1 5/8" x 1 5/8" UNISTRUT x 15"	END SECTION	(10) CORE
8B	55-21-022	1 5/8" x 1 5/8" UNISTRUT x 22"	END SECTION	(10) CORE
8C	55-21-057	1 5/8" x 1 5/8" UNISTRUT x 57"	CENTER & EXT SECTION	(10) CORE
9	BRK-TV	BOLT UP CASTINGS	CENTER & EXT. SECTION EXT. w/OPNG SECTION	(8) CORE (8) CORE
10	55-10-215	1/4" THREADED BRONZE GROUND INSERT WELD TO REBAR "GRD" TO BE STENCILED IN RED LETTERS	CENTER & EXT. SECTION EXT. w/OPNG SECTION	(2) CORE (2) CORE
11	55-10-210	INSERT, 1/4" x 1 1/2" P-15T CLOSED FOR BONDING RIBBON	END SECTION	(2) CORE
12	55-20-813	8 TON x 13 3/8" GALV. DOGBONE ANCHOR FOR HANDLING	CENTER & EXT. SECTION CENTER & EXT. SECTION	(2) CORE (2) SHELL & (4) SURFACE (6) SURFACE

NOTES:

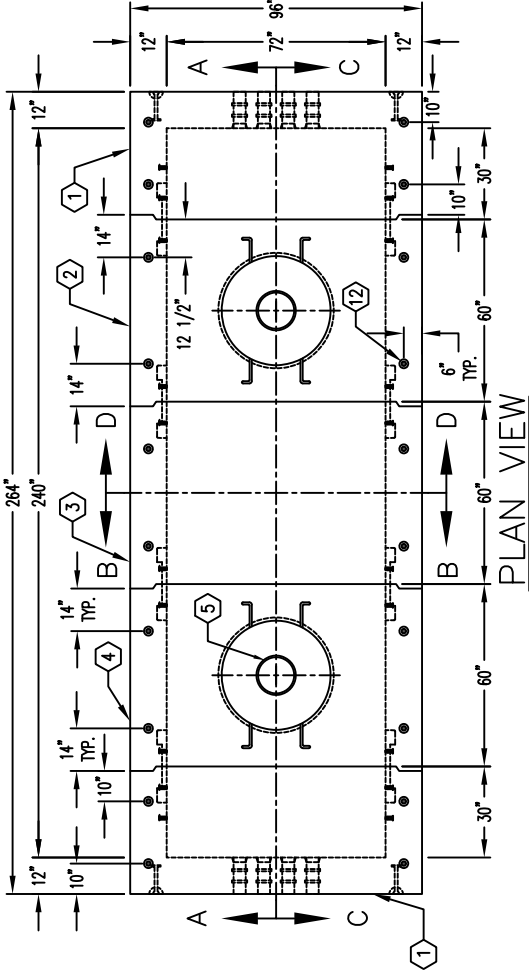
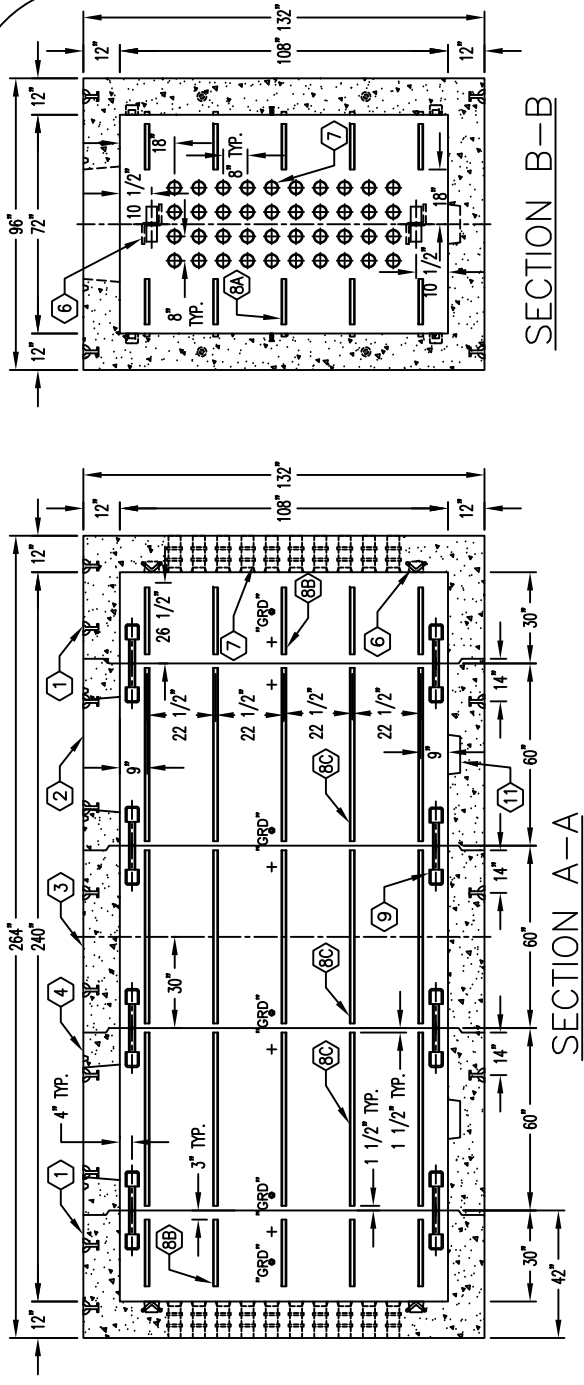
- STANDARDS: AASHTO LRFD BRIDGE DESIGN SPECIFICATIONS, 6TH EDITION, WITH 2010 CALTRANS AMENDMENTS; CITY OF LOS ANGELES BUREAU OF ENGINEERING STANDARD PLAN S-601, LATEST, MANUAL PART H, ASTM C-857. STRUCTURAL CALCS. #34109.
- MATERIAL. CONCRETE, F<sub>c</sub>=5,500 PSI. MIX 17 OR 30 INCLUDES FLY ASH AND DCL. REINFORCEMENT PER ASTM A-706, F<sub>y</sub>=60,000 PSI.
- LOADS. VERTICAL LIVE LOAD: AASHTO HL-93. LIVE LOAD SURCHARGE: LA BOE PART H, FIGURE H 374.2A, MINIMUM 80 PSF (TO BOTTOM OF VAULT). SOIL LATERAL LOADS: 40 PCF (DRY), 81 PCF (SATURATED), SATURATED SOIL CONDITIONS 3'-0" BELOW GRADE. SOIL BEARING CAPACITY = 1500 PSF. DESIGN SOIL DENSITY IS 120 PCF.
- LOADS NOT INCLUDED. DESIGN DOES NOT INCLUDE COOPER E-80 RAILROAD LOADS OR LATERAL OR SURCHARGE LOADS THAT ARE PRODUCED BY FOOTING OR FOUNDATIONS ADJACENT TO THE STRUCTURE. THIS SUBSTRUCTURE SHALL BE KEPT AT LEAST IN A 1:1 RATIO AWAY FROM ALL FOOTINGS AND FOUNDATIONS, UNLESS THE ENGINEER OF RECORD APPROVES IN WRITING.
- INSTALLATION LIMITS. VAULT SHALL HAVE A MINIMUM COVER OF 1'-6" AND A MAXIMUM COVER OF 5'-0".
- EACH CONCRETE SECTION SHALL BE MARKED ON THE INSIDE & OUTSIDE WITH "JENSEN-PRECAST", AT&T OI# AND THE DATE OF POUR.
- EACH CONCRETE SECTION SHALL HAVE CAST-IN ON THE INSIDE "JENSEN", AND THE YEAR.
- EACH PIECE TO BE STENCILED WITH ITS PART NO.
- ALL WALLS AND CEILING SHALL BE PAINTED WHITE.
- INSTALLATION. VAULT TO BE PLACED ON A MIN. 6" BASE OF CRUSHER RUN FOR EASE OF INSTALLATION AND EVEN LOAD DISTRIBUTION. BASE MATERIAL IN ACCORDANCE WITH SECTION 200-2 OF THE SSPWC (GREEN BOOK).
- ADDITIONAL SUBMITTAL, PERMIT AND CONSTRUCTION PLAN REVIEW WILL BE REQUIRED FOR EACH PROJECT LOCATION. SUBMIT TO CITY ENGINEER FOR APPROVAL PRIOR TO START OF ANY CONSTRUCTION.
- ALL INSTALLATIONS SHALL COMPLY WITH ALL OTHER LOCAL GOVERNING CODES AND REGULATIONS INCLUDING CALIFORNIA PUBLIC UTILITIES COMMISSION REGULATIONS.

MINIMUM EXCAVATION SIZE:  
9'-0" x 23'-0" x DEPTH REQD.

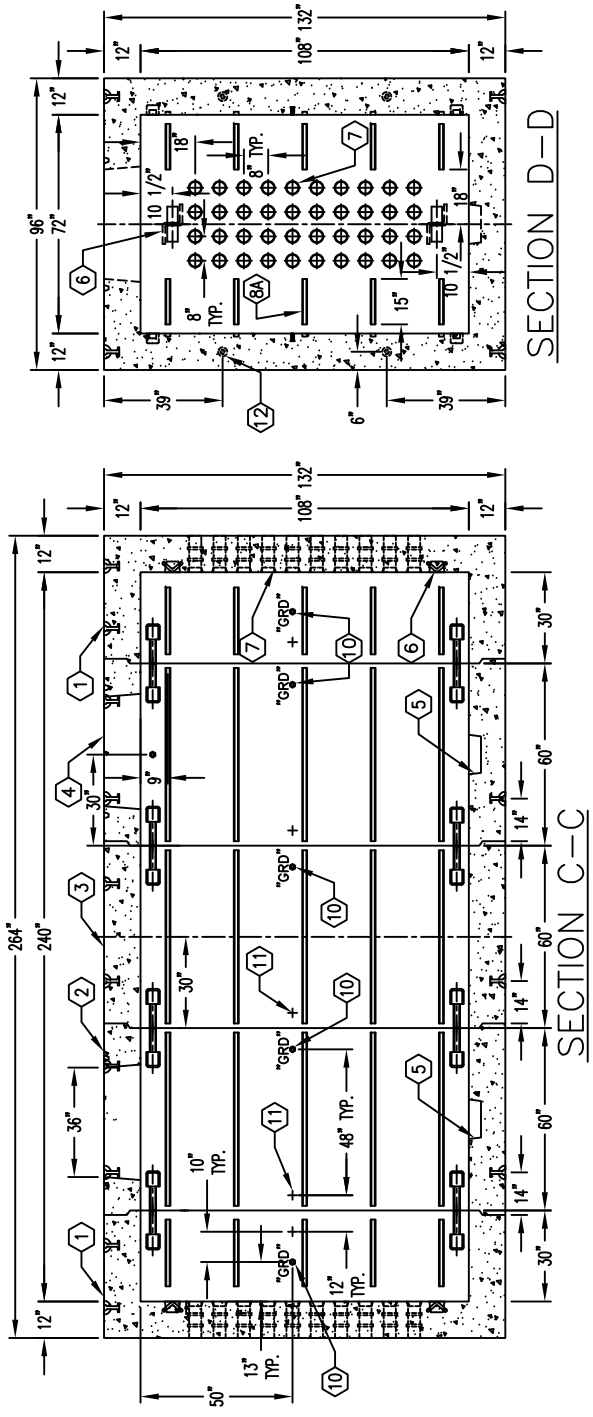


THE FOLLOWING MATERIALS ARE TO BE SHIPPED WITH THE MANHOLE.

- 12B31 LADDER STEPS, OR EQUAL
- 1-3600 LADDER 10', OR EQUAL
- SEE CABLE RACKING DWG'S 69-E24.30-CR14 & 69-R60-CR14
- SEE GRADE RING DWG K36X-MN12-LA-09



DESCRIPTION	AT&T OI#
6x9x2-6 MODULAR MANHOLE END CAP W/RACKING	XXXXXXX
6x9x2-6 MODULAR MANHOLE END CAP W/RACKING	100061966-LA
6x9x5 MODULAR MANHOLE CENTER W/ACCESS & RACKING	100061967-LA
6x9x5 MODULAR MANHOLE W/O ACCESS & W/RACKING	100061968-LA



DATE	DRAWN BY	CHECKED BY			
-	-	-			
#	DATE	DESCRIPTION	REVISION	BY	CHK
B	01-04-18	REMOVED OTHER LENGTHS		DF	-
A	09-29-16	ADD DCI PER LAUDE COMMENTS		EO	SJC