

7'-0" x 11'-0" TRANSFORMER PAD W/6'-0" x 10'-0" x 60" DEEP VAULT

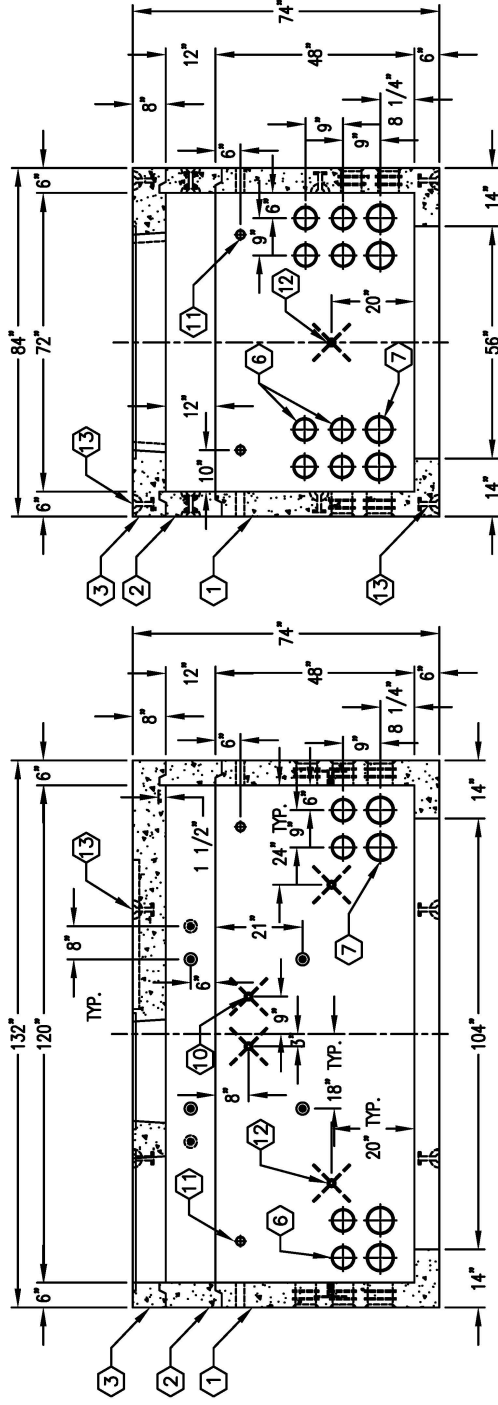
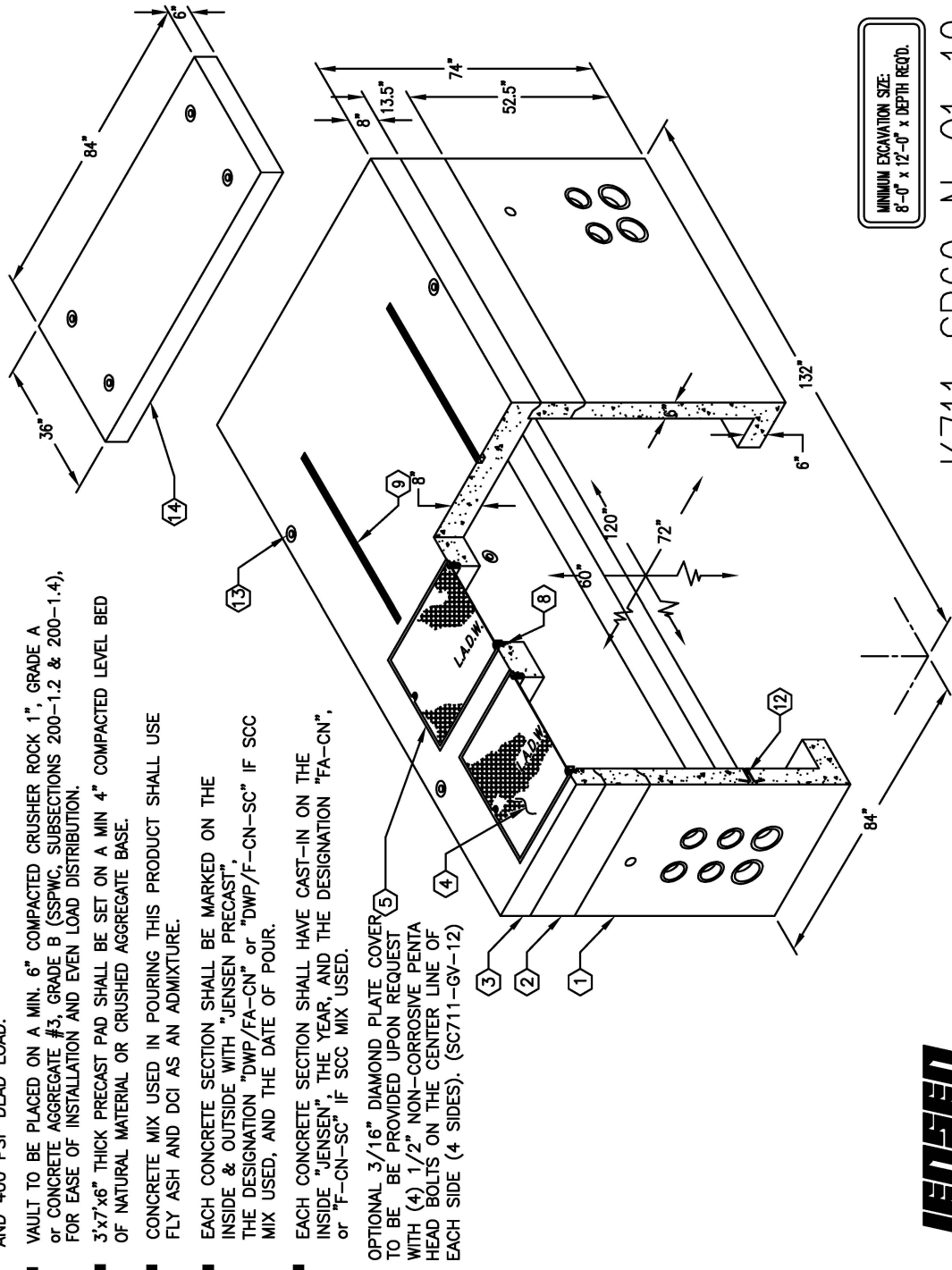
| MATERIAL LIST - K711-SB60-N-12 | | | |
|--------------------------------|--------------------------------------|--|---|
| ITEM PART NO. | DESCRIPTION | CAGE NO. / LOCATE | WEIGHT/ MOUNT |
| 1 | SB610-L48-N-1214 | 48" LOWER SECTION WITH TERMINATORS | CG-SB610-L48-N-1214 13,375 lbs |
| 2 | UV610-R12-12 | 13-1/2" EXTENDED SECTION | CG-610-R12-12(171) 3,000 lbs |
| 3 | PD84132-T8-12 | 8" TRANSFORMER PAD SECTION | CG-PD84132-T8-12(206) 6,050 lbs |
| 4 | SC3048-PAGV 20-40-LA 20-10-413 | (1) PIECE PARKWAY DIAMOND PLATE COVER GALV NAME PLATE MARKED "LADWP-E" (1" HT.) (4) 1/2" x 1-1/2" PENTA HEAD BOLTS OPTIONAL | 204 lbs |
| 5 | SC711-GV-12 | (1) PIECE DIAMOND PLATE TEMPORARY COVER GALV AFTER BEAD WELDING "LADWP-E" (1" HT.) | |
| 6 | 20-10-413 | (4) 1/2" x 1-1/2" PENTA HEAD BOLTS | |
| 7 | 55-30-53 | 5" DIA. DOUBLE MEMBRANE TERMINATOR | (24) SHELL |
| 8 | 55-30-61 | 6" DIA. TERMINATOR WITH MEMBRANE | (16) SHELL |
| 9 | 55-10-416 | 1/2" DIA. P35T OPEN BTM INSERT WITH CLEAN OUT HOLE | (8) TABLE |
| 10 | 55-21-036 | 1-5/8" x 1-5/8" GALV UNISTRUT x 36" LONG | (2) SURFACE |
| 11 | 55-10-455 | 1/2" DIA. COIL INSERT | (4) CORE |
| 12 | 55-30-20 | 2" DIA. TERMINATOR FOR GROUND WIRE | (8) CORE |
| 13 | 55-10-830 55-20-404 | 1" DIA. X 3 1/2" COIL INSERT 4 TON 4-3/4" GALVANIZED RISS FOR HANDLING | (6) CORE (4) CORE & (4) SURFACE (4) CORE & (4) SHELL (4) SURFACE |
| 14 | PD3684-T6-12 | 3'-0" x 7'-0" x 6" PRECAST PAD | 1,650 LBS |

NOTES:

- CONCRETE DESIGNED IN ACCORDANCE WITH L.A.D.W.P. SPEC. P178-RB, ACI 318, AND ASTM C857, USING 5,500 PSI COMPRESSIVE STRENGTH CONCRETE AT 28 DAYS AND 60,000 PSI YIELD STRENGTH ASTM A-706 STEEL REINFORCEMENT PER CALC. #31580.
- TRANSFORMER PAD DESIGNED FOR 100 PSF LIVE LOAD AND 400 PSF DEAD LOAD.
- VAULT TO BE PLACED ON A MIN. 6" COMPACTED CRUSHER ROCK 1", GRADE A OR CONCRETE AGGREGATE #3, GRADE B (SSPWC, SUBSECTIONS 200-1.2 & 200-1.4), FOR EASE OF INSTALLATION AND EVEN LOAD DISTRIBUTION.
- 3'x7'x6" THICK PRECAST PAD SHALL BE SET ON A MIN 4" COMPACTED LEVEL BED OF NATURAL MATERIAL OR CRUSHED AGGREGATE BASE.
- CONCRETE MIX USED IN POURING THIS PRODUCT SHALL USE FLY ASH AND DCI AS AN ADMIXTURE.
- EACH CONCRETE SECTION SHALL BE MARKED ON THE INSIDE & OUTSIDE WITH "JENSEN PRECAST". THE DESIGNATION "DWP/FA-CN" or "DWP/F-CN-SC" IF SCC MIX USED, AND THE DATE OF POUR.
- EACH CONCRETE SECTION SHALL HAVE CAST-IN ON THE INSIDE "JENSEN", THE YEAR, AND THE DESIGNATION "FA-CN", or "F-CN-SC" IF SCC MIX USED.

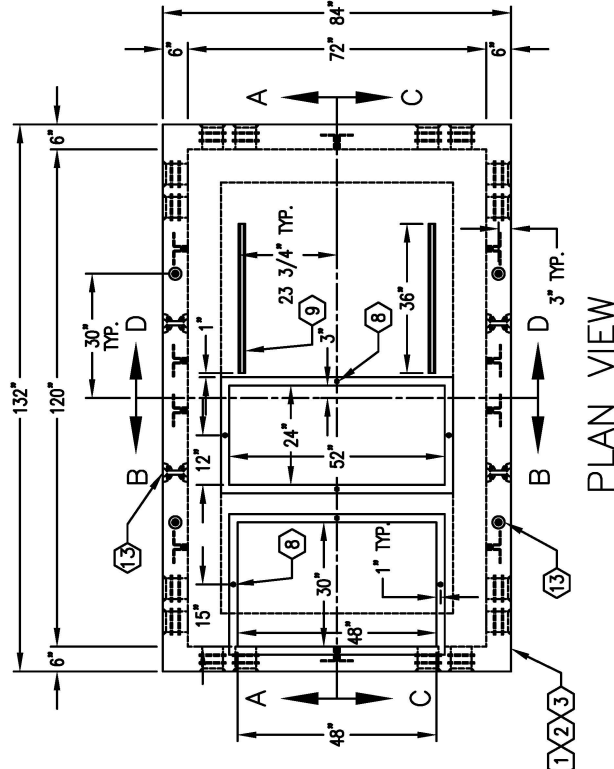
ORDERING INFORMATION

K711-SB60-N-12 FOR ASSEMBLY AS SHOWN.
APPROVED FOR L.A.D.W.P. SPEC. UB721-14 G1 & UB721-30 G1
TOTAL WEIGHT OF ASSEMBLY AS SHOWN IS 23,460 lbs.

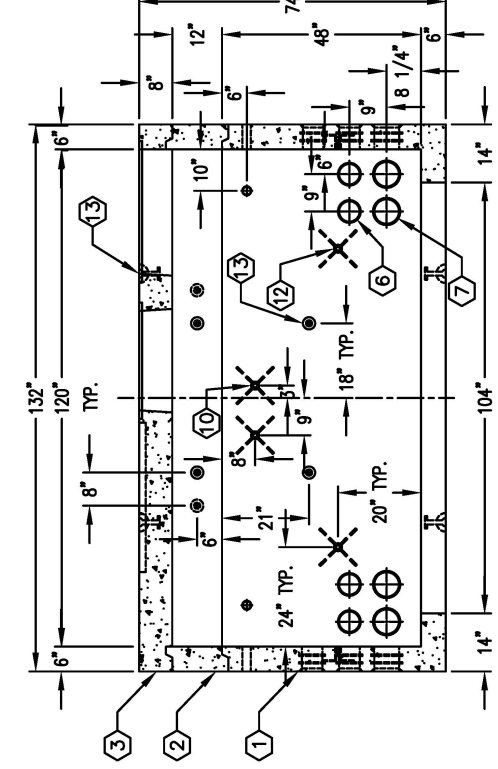


SECTION A-A

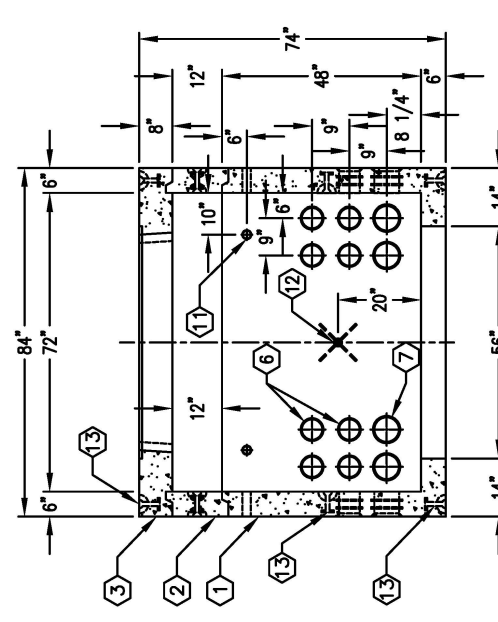
SECTION B-B



PLAN VIEW



SECTION C-C



SECTION D-D

| # | DATE | DESCRIPTION | BY |
|---|----------|---|-----|
| E | 11-18-14 | REV NOTES PER LAJWP UB721-14 & 30 R12 | EO |
| D | 06-18-14 | REVISED COIL INSERT LOCATION ON SECTION C-C | JEF |