

7' x 13' PAD W/ 6' x 12' x 5' ENCLOSURE

STRUCTURE DESIGNED IN ACCORDANCE WITH:
 AASHTO LOAD FACTOR DESIGN METHOD FOR TRANSFORMER
 WEIGHT AND/OR 300 LBS/FT² LIVE LOAD.
 SUBSTRUCTURE DESIGNED FOR AASHTO H-20 TRAFFIC
 SURCHARGE LOAD

ASTM C-857 STANDARD PRACTICE FOR MINIMUM
 STRUCTURAL DESIGN LOADING FOR UNDERGROUND
 PRECAST CONCRETE UTILITY STRUCTURES

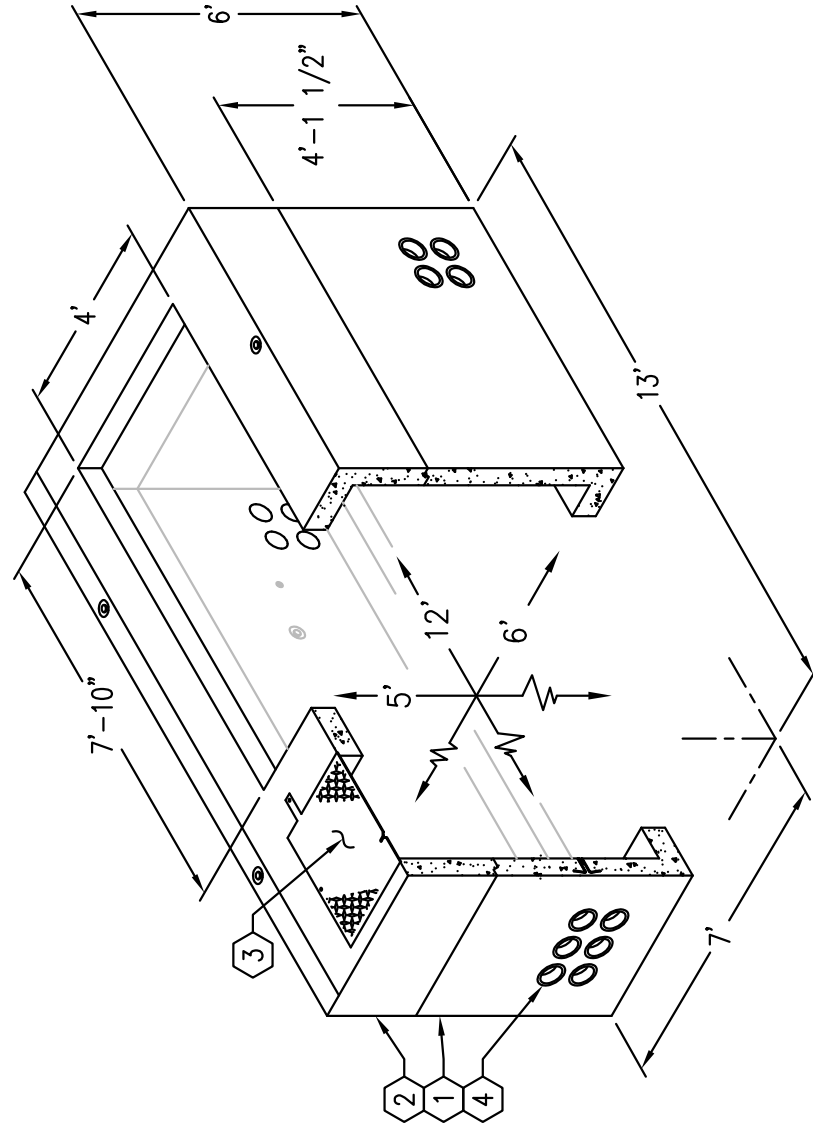
AMERICAN CONCRETE INSTITUTE ACI 318-05

CONCRETE COMPRESSIVE STRENGTH $F'_c = 5500$ PSI

REINFORCEMENT IN ACCORDANCE WITH ASTM A-706
 WITH A YIELD STRENGTH OF $F_y = 60,000$ PSI.

6" MINIMUM COMPACTED GRANULAR MATERIAL RECOMMENDED
 FOR SUB-BASE FOR EASE OF INSTALLATION AND EVEN LOAD
 DISTRIBUTION

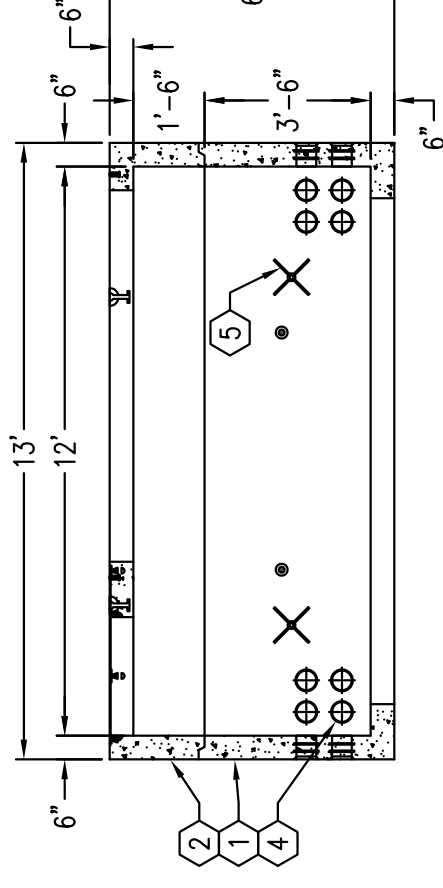
1. SB612-B42-12, 42" BOTTOM SECTION,
WT. 11,622 Lbs.
2. SB612-T18-12, 18" PAD SECTION,
WT. 8,000 Lbs.
3. SC612-GV-12, ONE PIECE GALV.
PARKWAY COVER, MARKED "LADWP-E".
4. 5" DIA. TERMINATOR W/ DOUBLE MEMBRANE.
5. 1" GALV. COIL THREAD INSERT.



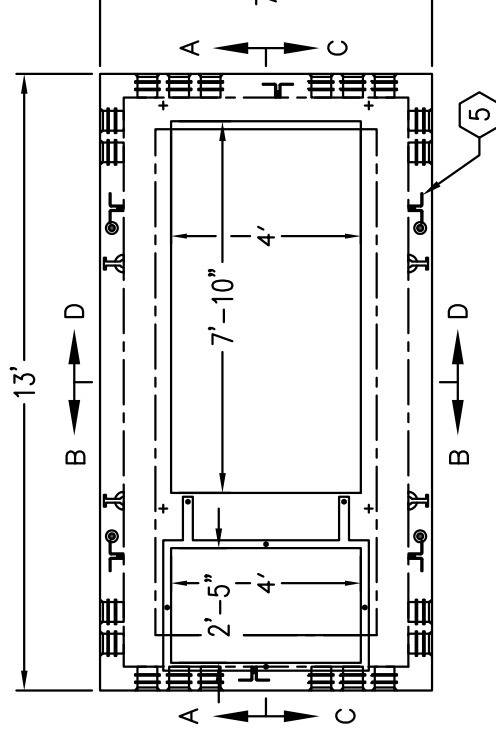
MINIMUM EXCAVATION SIZE:
 8'-0" x 14'-0" x REQ'D DEPTH

7' x 13' PAD W/ 6' x 12' x 5' ENCLOSURE

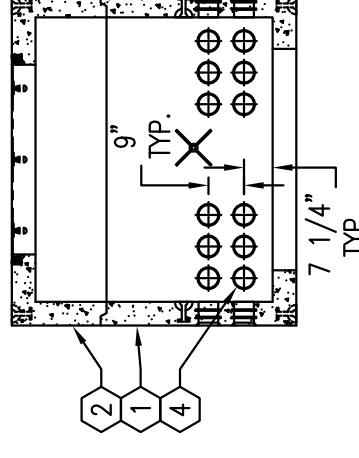
MODEL K713-SB60-N-12
 L.A.D.W.P. SPEC.
 UB721-10



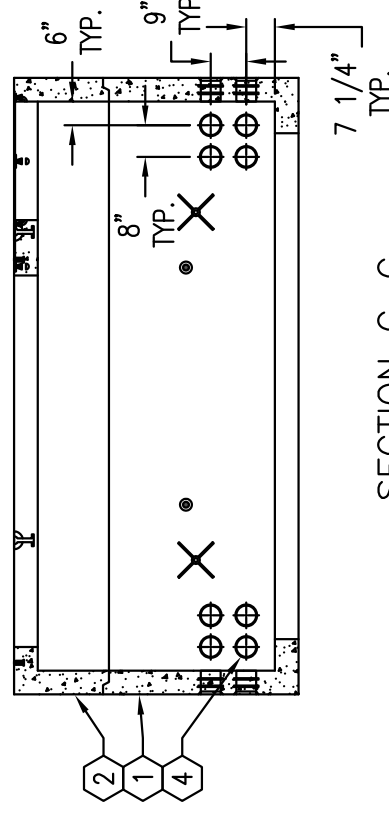
SECTION A-A



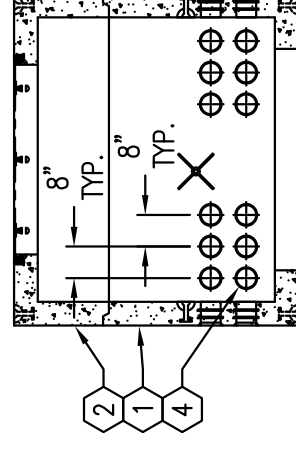
PLAN VIEW



SECTION B-B



SECTION C-C



SECTION D-D