

7' x 14' x 8' VAULT

MODEL K714-FV96-11

EDISON SPEC.
UGS-VA400, V714

NOTES:
STRUCTURE DESIGNED IN ACCORDANCE WITH:
AASHTO H-20 TRAFFIC BRIDGE LOADING
ASTM C-857 STANDARD PRACTICE FOR MINIMUM STRUCTURAL DESIGN LOADING FOR UNDERGROUND PRECAST CONCRETE UTILITY STRUCTURES
AMERICAN CONCRETE INSTITUTE ACI 318-05

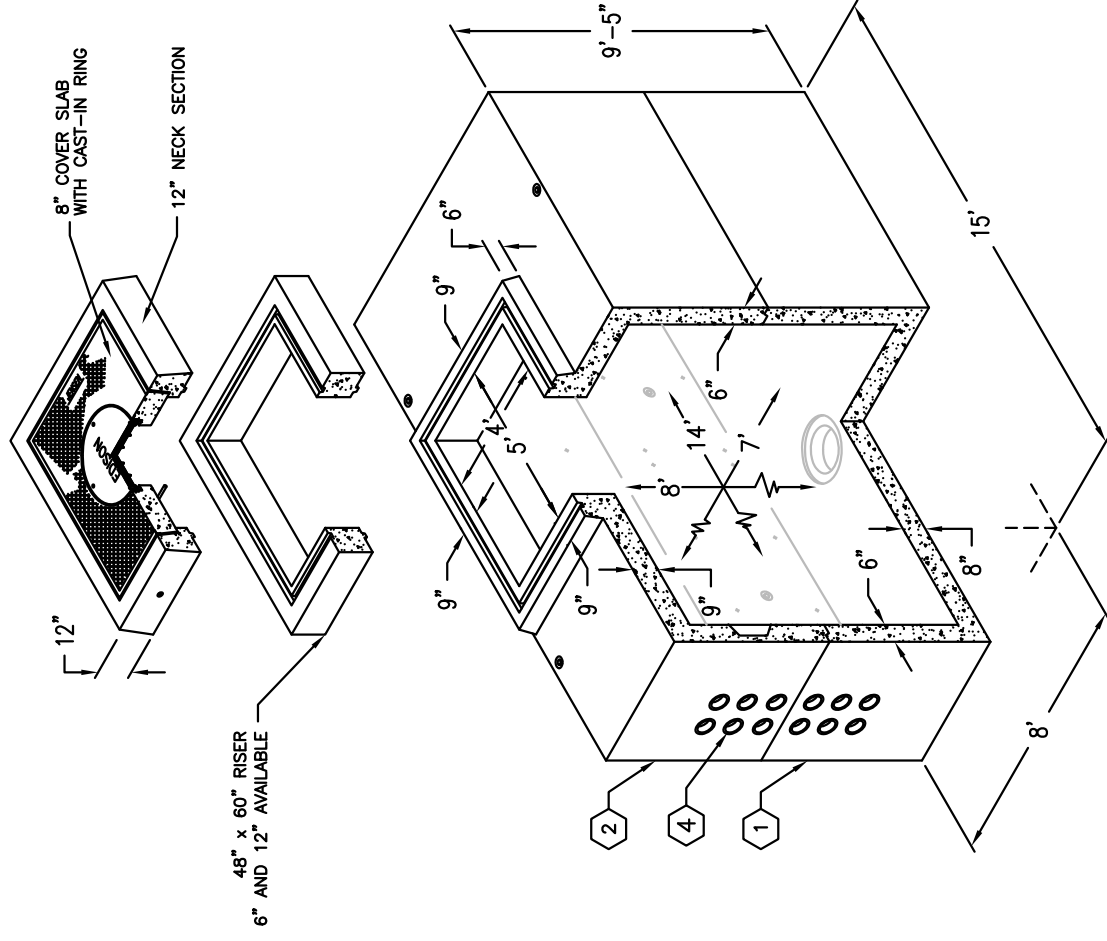
CONCRETE COMPRESSIVE STRENGTH $F'_c = 5500$ PSI
REINFORCEMENT IN ACCORDANCE WITH ASTM A-706 WITH A YIELD STRENGTH OF $F_y = 60,000$ PSI.

6" MINIMUM COMPACTED GRANULAR MATERIAL RECOMMENDED FOR SUB-BASE FOR EASE OF INSTALLATION AND EVEN LOAD DISTRIBUTION.

LIMIT OF COVER OVER ROOF SECTION IS 1'-6" TO 4'-0".

ALL WALLS AND CEILINGS SHALL BE PAINTED WHITE.

1. UV714-B48-11, 48" BOTTOM SECTION, WT. 25,200 lbs.
2. UV714-T48-11, 48" TOP SECTION, WT. 25,730 lbs.
3. 13" x 14" DIA. SUMP x 6" DEEP W/ RECESS TO ACCOMMODATE SUMP COVER.
4. 5" DIA. TERMINATORS.
5. 18" x 18" UNREINFORCED PANEL.
6. 10" DIA. x 4" DEEP PLASTIC VENT TERMINATORS.
7. 7/8" DIA. GALV. PULL IRON.
8. 1" COIL GALV. THRD. INSERT.
9. 1/2" THRD. BRONZE INSERT BRAZED TO STRUCTURAL STEEL ABOVE EA. INSERT.
10. 1/2" P-36T INSERT. FOR 'J' BOLT.
11. 1/2" PLASTIC INSERT.

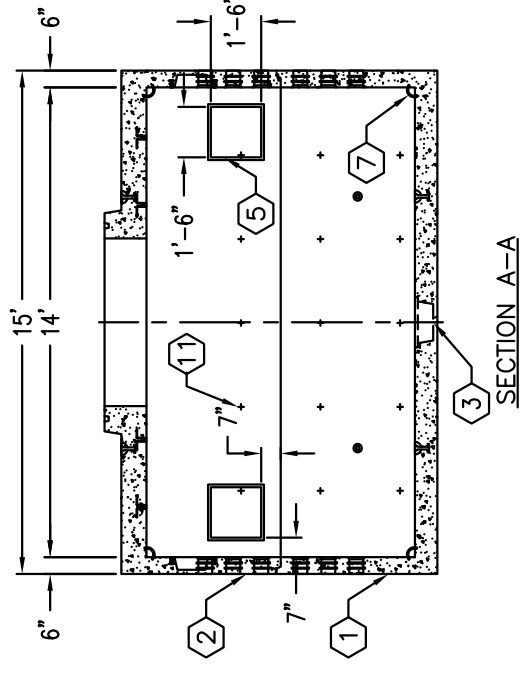


MINIMUM EXCAVATION SIZE:
9'-0" x 17'-0" x REQ'D DEPTH

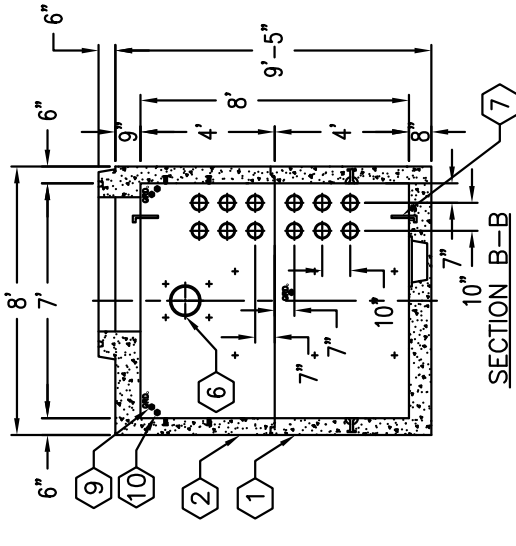
7' x 14' x 8' VAULT

MODEL K714-FV96-11

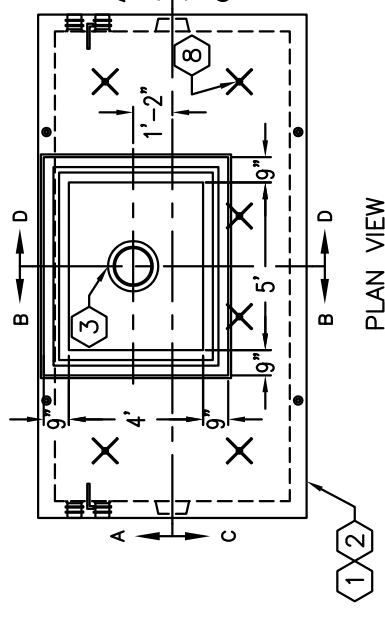
EDISON SPEC.
UGS-VA400, V714



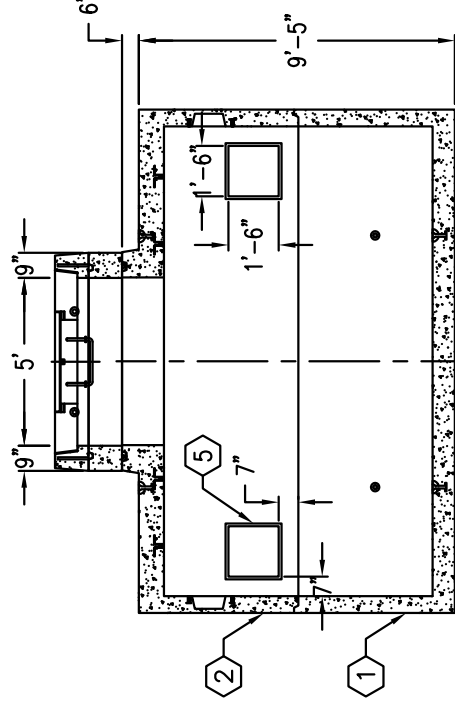
SECTION A-A



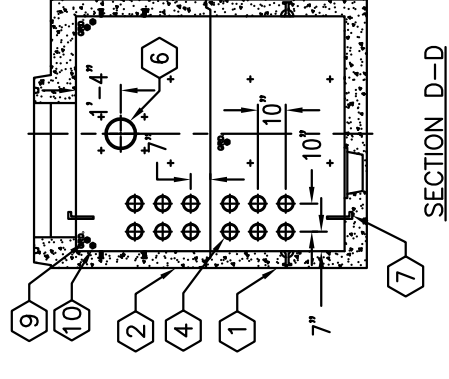
SECTION B-B



PLAN VIEW



SECTION C-C



SECTION D-D