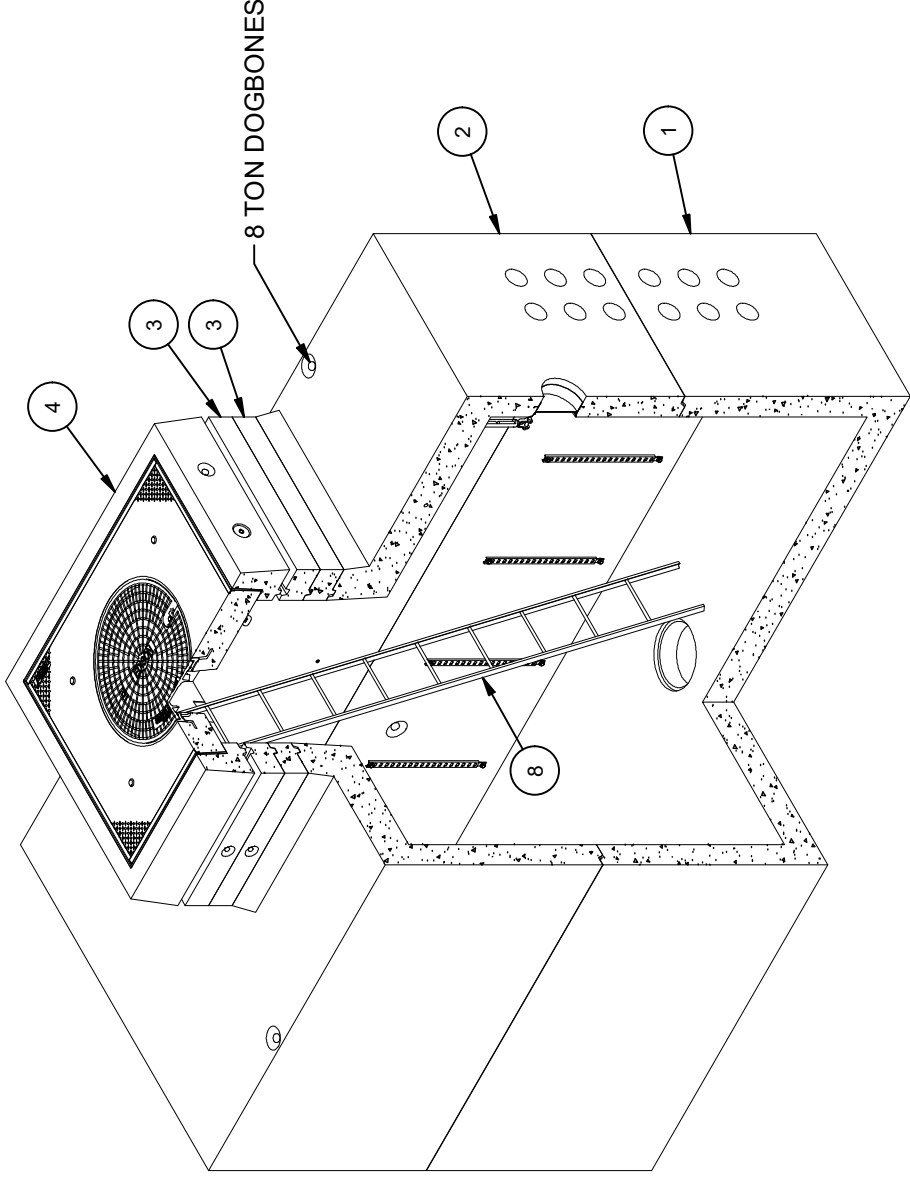


DESIGN NOTES

- DESIGNED IN ACCORDANCE WITH AASHTO HS20-44 TRAFFIC BRIDGE LOADING USING 5,500 PSI COMPRESSIVE STRENGTH CONCRETE AND 60,000 PSI YIELD STRENGTH ASTM A-706 STEEL REINFORCEMENT PER CALCS. #31004.
- COVER DESIGNED FOR TRAFFIC LOADING.
- LIMIT OF COVER OVER ROOF SECTION IS 1'-6" TO 4'-0".
- MINIMUM EXCAVATION SIZE: 9'-0" X 16'-0" X DEPTH REQ'D.
- VAULT TO BE PLACED ON A MIN. 6" BASE OF CRUSHER RUN FOR EASE OF INSTALLATION AND EVEN LOAD DISTRIBUTION.
- CONCRETE MIX USED IN POURING THIS PRODUCT SHALL USE FLY ASH AS AN ADMIXTURE.
- ALL PARTS TO BE STENCILED: MFG DATE / JOB NUMBER / PRODUCT ID / WEIGHT.
- FINISH COATING: ALL INTERIOR WALLS AND CEILING SHALL BE PAINTED WHITE.
- FOR COMPLETE DESIGN AND PRODUCT INFORMATION CONTACT JENSEN PRECAST.

BILL OF MATERIALS

ITEM	UNIT QTY	QTY	PART NUMBER	DESCRIPTION	MASS (lb)
1	1	1	100009781	Vault 841168x48 Rect. Bottom Section Terminators Sump Edison UGS VA 410	25180
2	1	1	100009785	Vault 841168x48 Rect. Top Section 48"x60"E Terminators Edison UGS VA 410	25183
3	1	2	200012851	Riser 4860x6 LADWP 1-802 2B	1169
4	1	1	200040425	Vault Neck and Plug Cover Assembly 4860x12 30"C Edison UGS VA 470 & FC 641 Swiveloc	4063
5	1	4	100009239	ROD THREADED COIL YELLOW DIP 3/4 X 10-1/2"	
6	1	8	100007136	WASHER FLAT 3/4 REGULAR TYPE A ZINC	
7	1	8	100007010	HEX COIL NUT 3/4-4.5 POST YELLOW DIP	
8	1	1	100007320	LADDER HOOKED GALV 11FT ED/LA I3382	
9	1	9	100002527	CABLE RACK 18 HOLE GALV TABS	
10	1	18	100004339	BOLT HEX 1/2-13 UNC 2 304SS	
11	1	22	100007767	WASHER FLAT 1/2 REGULAR 1.25 OD 304SS	
12	1	4	100013515	CHAIN 1/2 7-1/2FT GR-30 (FIELD CUT)	
13	1	4	100009367	SHACKLE 5/8IN W/3/4 COTTER PIN GALV	
14	1	4	100009368	TURNBUCKLE CLEVIS-TO-CLEVIS 3/4 THREADED GALV	
15	1	4	100022758	GROUND ANCHOR BRACKET KIT HALO HB304R	
16	1	4	100004320	BOLT HEX 1/2-13 UNC 1 304SS	
17	4.000 gal	4.000 gal	100006420	COATING PAINT LATEX WHITE	
18	1.000 ul	1.000 ul	100005749	SEALANT JOINT BUTYL RUBBER ASTM C-990 AND M198 CS-102 1IN EQUIV X14.5FT PER BOX 118FT	



ISO VIEW

REVISION HISTORY		DATE	APPROVED
REV B	REPLACED BOTTOM SECTION WITH STANDARD NUMBER	11/10/2023	

DESCRIPTION:  
Vault Layout 841168x96 Terminators Sump Edison UGS VA 410 Int. Paint - White Latex

PART NUMBER: 100010582 LAYOUT REVIEW  
DRAWN BY: J. Prado  
CREATED: 2/6/2019 MODIFIED: 11/10/2023

REV: B-1  
SHEET: 13  
1 OF 2

©2023 Jensen Precast-All rights reserved. All materials appearing as Jensen Precast documents and the like are proprietary work product and are protected under U.S. copyright and other laws. Unless in conjunction with business conducted with Jensen Precast, any use of Jensen Precast work product without express, written consent is prohibited, and recipient is prohibited from distributing any and all work product to non-approved third parties under penalty of civil action.

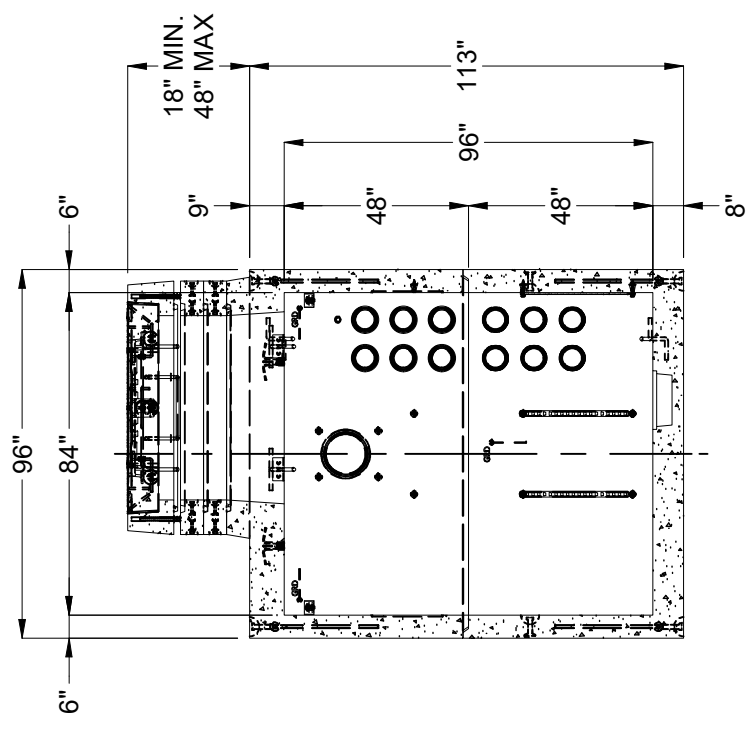
**JENSEN PRECAST** EST. 1968  
WWW.JENSENPRECAST.COM

LIFTING NOTES

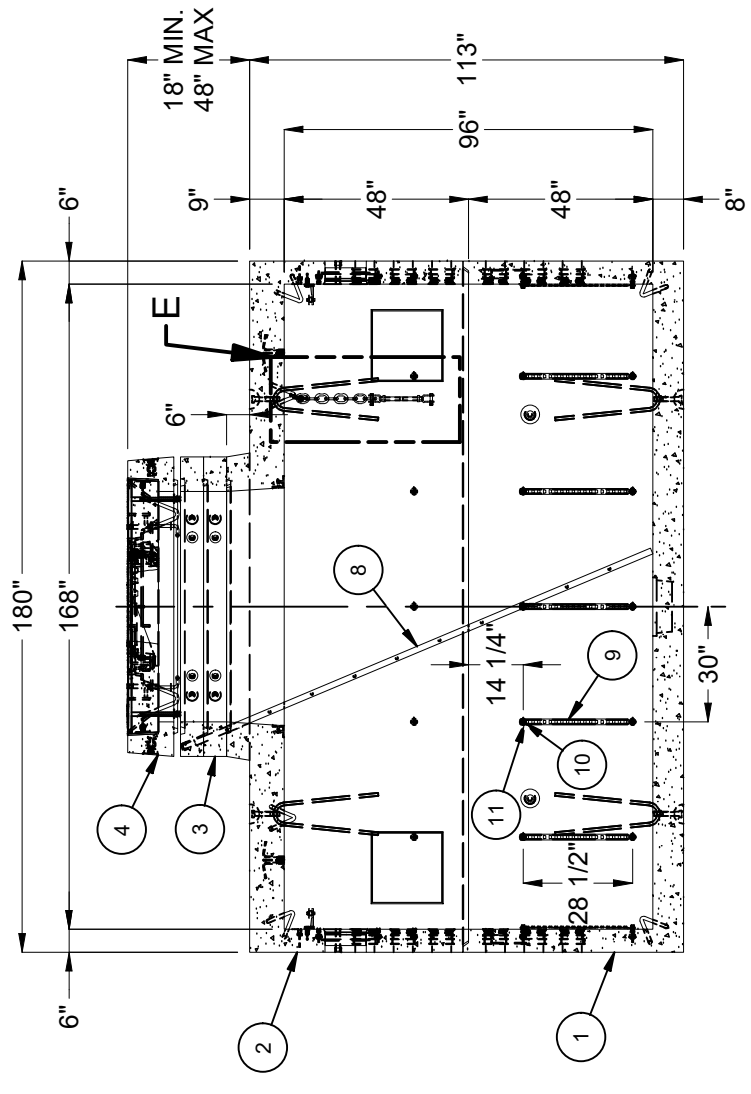
FIELD INSTALLATION: PLANT DEMOLDING: MINIMUM HANDLING CONCRETE STRENGTH F<sub>c</sub> = 5500 PSI RIGGING EQUALIZER REQUIRED TO EQUALIZE LOAD TO 4 LIFTING POINTS WITH A SLING ANGLE BETWEEN 60° AND 90°

BURY DEPTH: 1.5' - 4.0' to Top

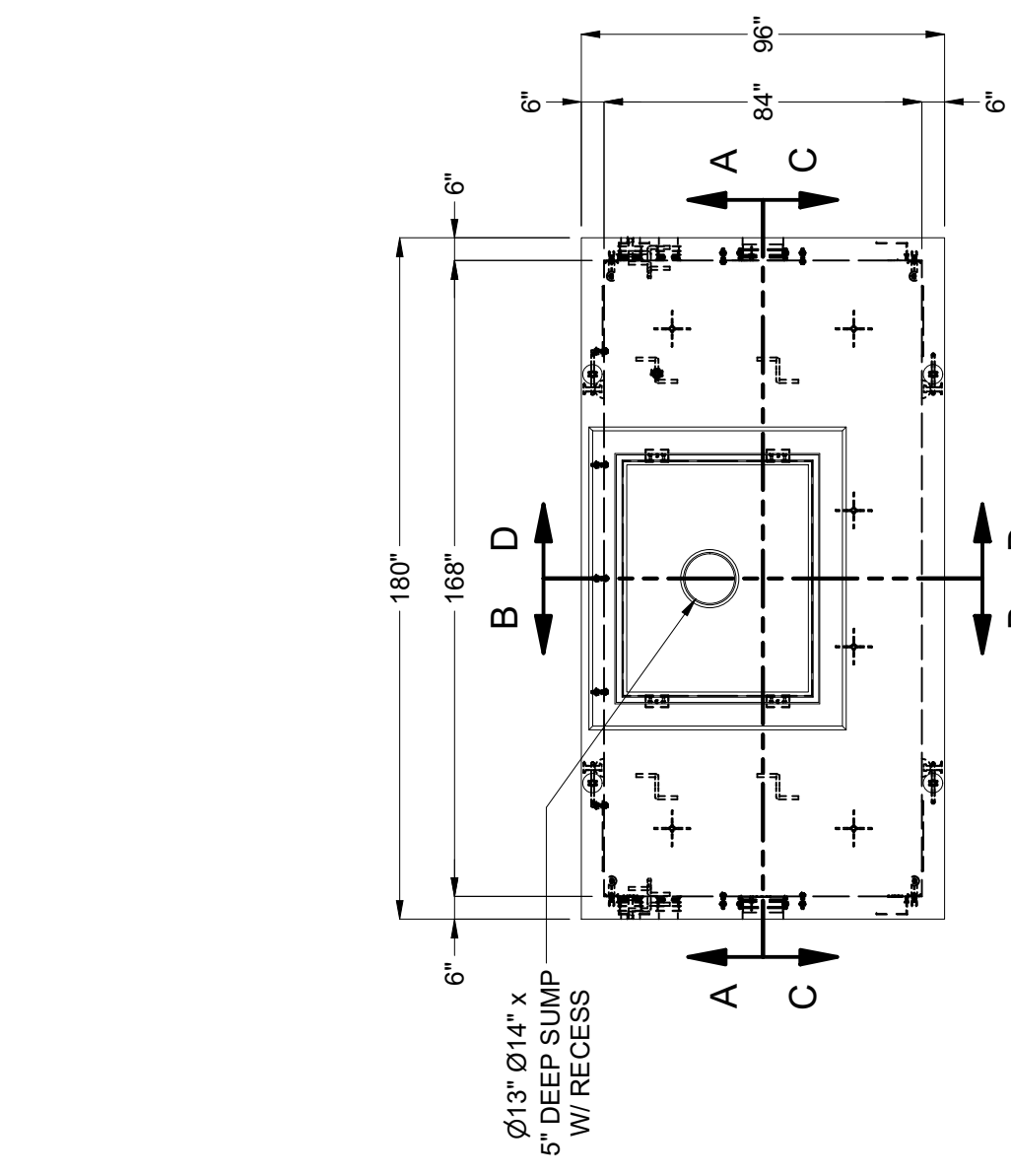
WATER LEVEL:	3.0'	APPROX. WEIGHT:	56884.26 Lbs
DESIGN SPEC:	ACI 318,ASTM C857	LOADING SPEC:	A-16 (AASHTO HS20-44)
AGENCY:	Edison	AGENCY SPEC:	UGS VA 410



**SECTION B-B**

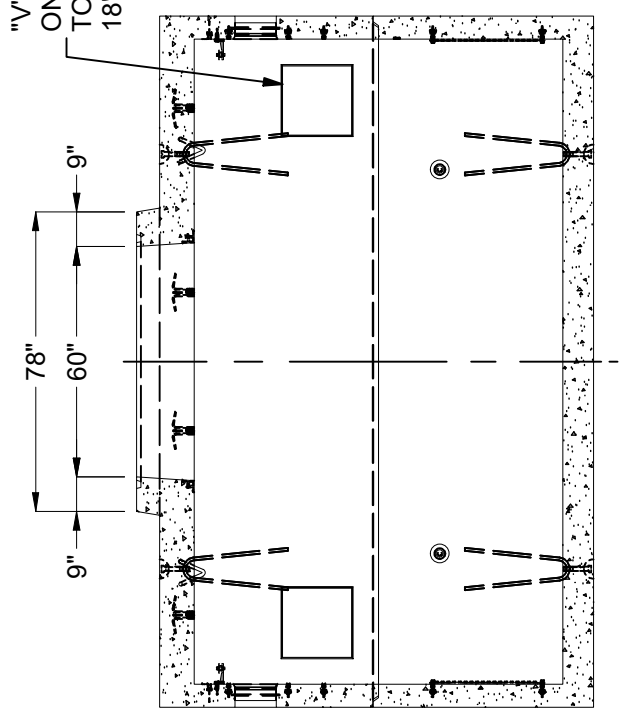


**SECTION A-A**

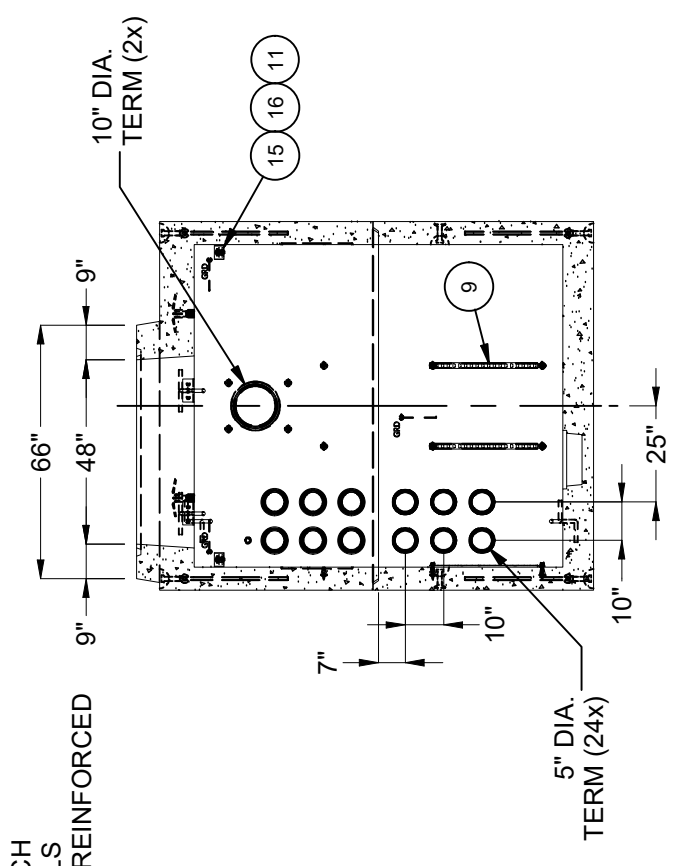


**PLAN VIEW**

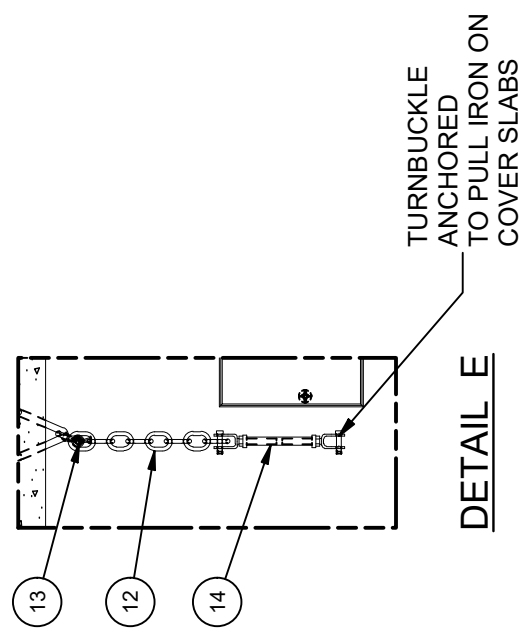
"V" SHAPE NOTCH ON INSIDE WALLS TO OUTLINE UNREINFORCED 18" x 18" PANEL



**SECTION C-C**



**SECTION D-D**



**DETAIL E**

<b>BURY DEPTH:</b>	1.5' - 4.0' to Top	<b>DESCRIPTION:</b>	Vault Layout 84168x96 Terminators Sump Edison UGS VA 410 Int. Paint - White Latex	<b>REV:</b>	B-1
<b>WATER LEVEL:</b>	3.0'	<b>APPROX. WEIGHT:</b>	56884.26 Lbs	<b>SHEET:</b>	14
<b>DESIGN SPEC:</b>	ACI 318, ASTM C857	<b>LOADING SPEC:</b>	A-16 (AASHTO HS20-44)	<b>PART NUMBER:</b>	100010582
<b>AGENCY:</b>	Edison	<b>AGENCY SPEC:</b>	UGS VA 410	<b>DRAWN BY:</b>	J. Prado
				<b>MODIFIED:</b>	11/10/2023
				<b>LAYOUT DRAWING</b>	
				<b>CREATED:</b>	2/6/2019
				<b>©2023 Jensen Precast. All rights reserved. All materials appearing as Jensen Precast documents and the like are proprietary work product and are protected under U.S. copyright and other laws. Unless in conjunction with business conducted with Jensen Precast, any use of Jensen Precast work product without express, written consent is prohibited, and recipient is prohibited from distributing any and all work product to non-approved third parties under penalty of civil action.</b>	
				<b>WWW.JENSENPRECAST.COM</b>	