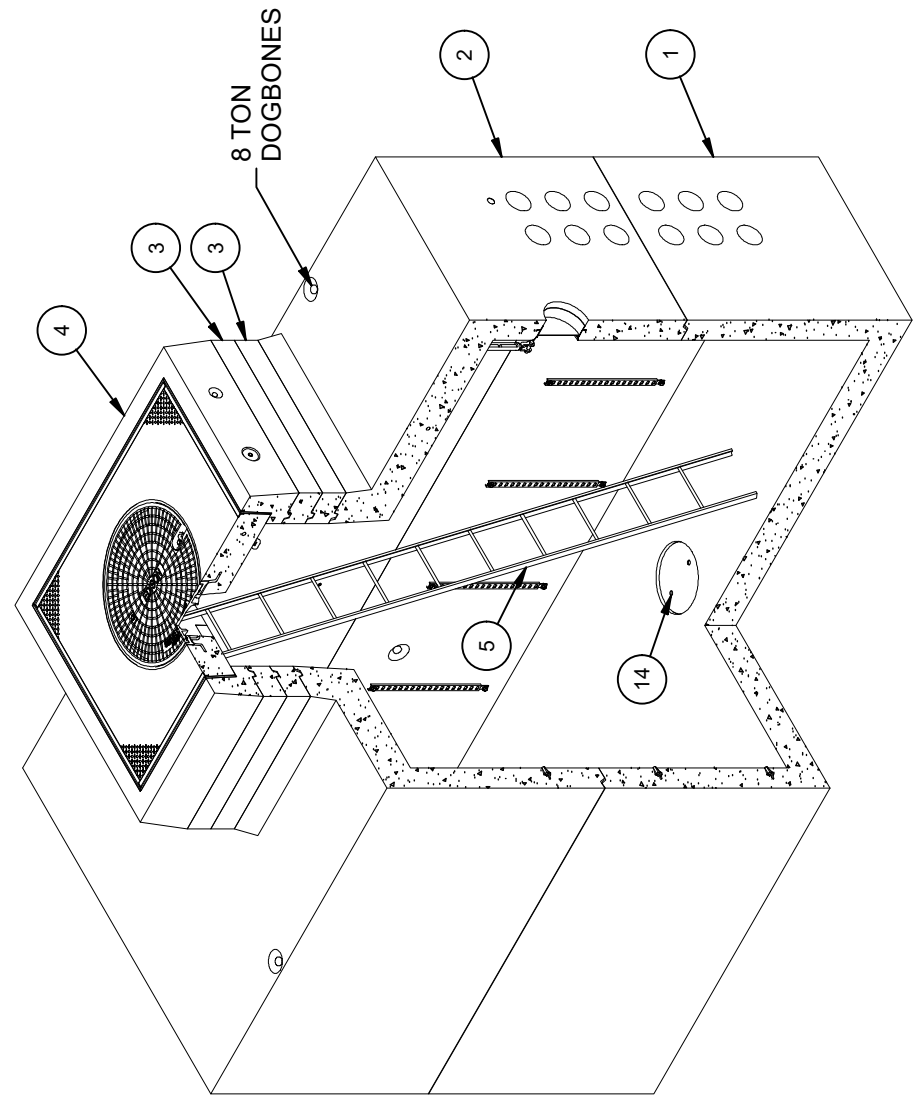


DESIGN NOTES

- DESIGNED IN ACCORDANCE WITH AASHTO HS20-44 TRAFFIC BRIDGE LOADING USING 5,500 PSI COMPRESSIVE STRENGTH CONCRETE AND 60,000 PSI YIELD STRENGTH ASTM A-706 STEEL REINFORCEMENT PER CALCS. #31004.
- COVER DESIGNED FOR TRAFFIC LOADING.
- LIMIT OF COVER OVER ROOF SECTION IS 1'-6" TO 4'-0".
- MINIMUM EXCAVATION SIZE: 9'-0" X 16'-0" X DEPTH REQ'D.
- VAULT TO BE PLACED ON A MIN. 6" BASE OF CRUSHER RUN FOR EASE OF INSTALLATION AND EVEN LOAD DISTRIBUTION.
- CONCRETE MIX USED IN POURING THIS PRODUCT SHALL USE FLY ASH AS AN ADMIXTURE.
- ALL PARTS TO BE STENCILED: MFG DATE / JOB NUMBER / PRODUCT ID / WEIGHT.
- FINISH COATING: ALL INTERIOR WALLS AND CEILING SHALL BE PAINTED WHITE.
- FOR COMPLETE DESIGN AND PRODUCT INFORMATION CONTACT JENSEN PRECAST.

BILL OF MATERIALS

ITEM	UNIT QTY	QTY	PART NUMBER	DESCRIPTION
1	1	1	100013308	Vault 84168x48 Rect. Bottom Section Terminators Sump EDISON UGS VA 410
2	1	1	100012828	Vault 84168x48 Rect. Top Section 48"x60"E Terminators EDISON UGS VA 410
3	1	2	200012851	Riser 4860x6 Rect. Riser LADWP 1-802 2B
4	1	1	200040425	Vault Neck and Plug Cover 4860x12 Assembly 30°C EDISON UGS VA 470 & FC 660
5	1	1	100007320	LADDER HOOKED GALV 11FT ED/LA I3382
6	1	9	100002527	CABLE RACK 18 HOLE GALV TABS
7	1	18	100004339	BOLT HEX 1/2-13 UNC 2 304SS
8	1	22	100007767	WASHER FLAT 1/2 REGULAR 1.25 OD 304SS
9	1	4	100013515	CHAIN 1/2 7-1/2FT GR-30 (FIELD CUT)
10	1	4	100009367	SHACKLE 5/8IN W/3/4 COTTER PIN GALV
11	1	4	100009368	TURNBUCKLE CLEVIS-TO-CLEVIS 3/4 THREADED GALV
12	1	4	100022758	GROUND ANCHOR BRACKET KIT HALO HB304R
13	1	4	100004320	BOLT HEX 1/2-13 UNC 1 304SS
14	1	1	100006783	SUMP COVER FOR 13IN GALV DIA PLATE
15	4,000 gal	4,000 gal	100006420	COATING PAINT LATEX WHITE
16	1,000 ul	1,000 ul	100005749	SEALANT JOINT BUTYL RUBBER ASTM C-990 AND M198 CS-102 1IN EQUIV X14.5FT PER BOX 118FT



ISO VIEW

LIFTING NOTES

- FIELD INSTALLATION: PLANT DEMOLING: MINIMUM HANDLING CONCRETE STRENGTH F_c = 5500 PSI RIGGING EQUALIZER REQUIRED TO EQUALIZE LOAD TO 4 LIFTING POINTS WITH A SLING ANGLE BETWEEN 60° AND 90°
- BURY DEPTH: 1.5' - 4.0' to Top
- WATER LEVEL: 3.0'
- APPROX. WEIGHT: 56501.48 Lbs
- LOADING SPEC: ACI 318, ASTM C857
- AGENCY SPEC: EDISON
- LOADING SPEC: A-16 (AASHTO HS20-44)
- AGENCY SPEC: UGS VA 410

REVISION HISTORY

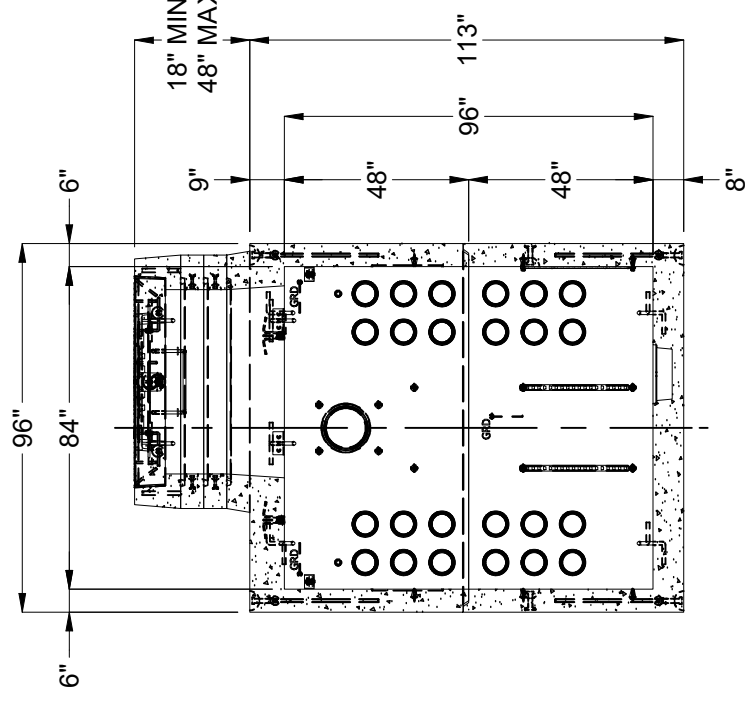
REV	DESCRIPTION	DATE	APPROVED
B	INITIAL RELEASE INVENTOR	2/21/2023	

©2023 Jensen Precast. All rights reserved. All materials appearing as Jensen Precast documents and the like are proprietary work product and are protected under U.S. copyright and other laws. Unless in conjunction with business conducted with Jensen Precast, any use of Jensen Precast work product without express, written consent is prohibited, and recipient is prohibited from distributing any and all work product to non-approved third parties under penalty of civil action.

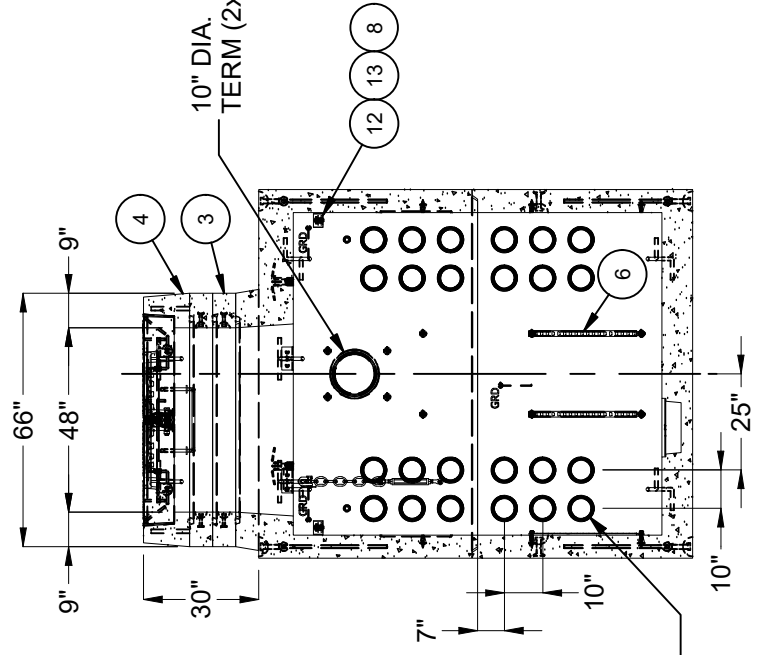
JENSEN PRECAST EST. 1968
WWW.JENSENPRECAST.COM

DESCRIPTION: Vault 84168 Layout Assembly EDISON UGS VA 410 Int. Coating - White Latex Paint
 LAYOUT REVIEW
 PART NUMBER: 100010583
 DRAWN BY: J. Prado
 CREATED: 2/21/2023
 MODIFIED: 2/21/2023

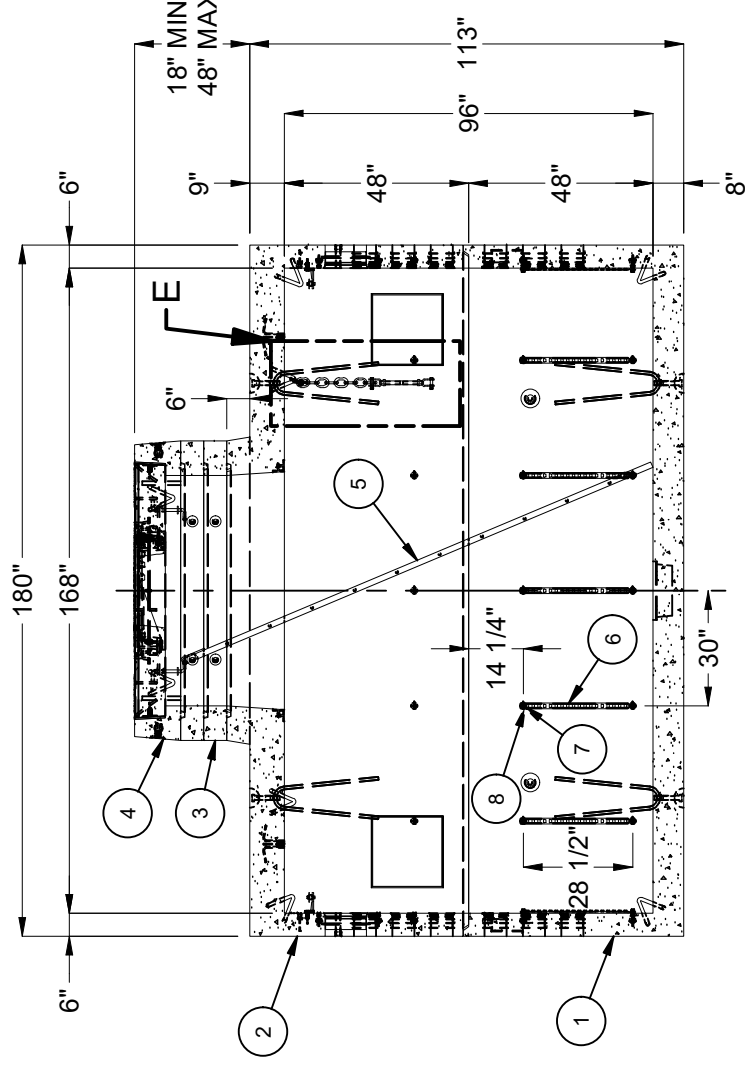
REV: B-1
 SHEET: 115
 1 OF 2



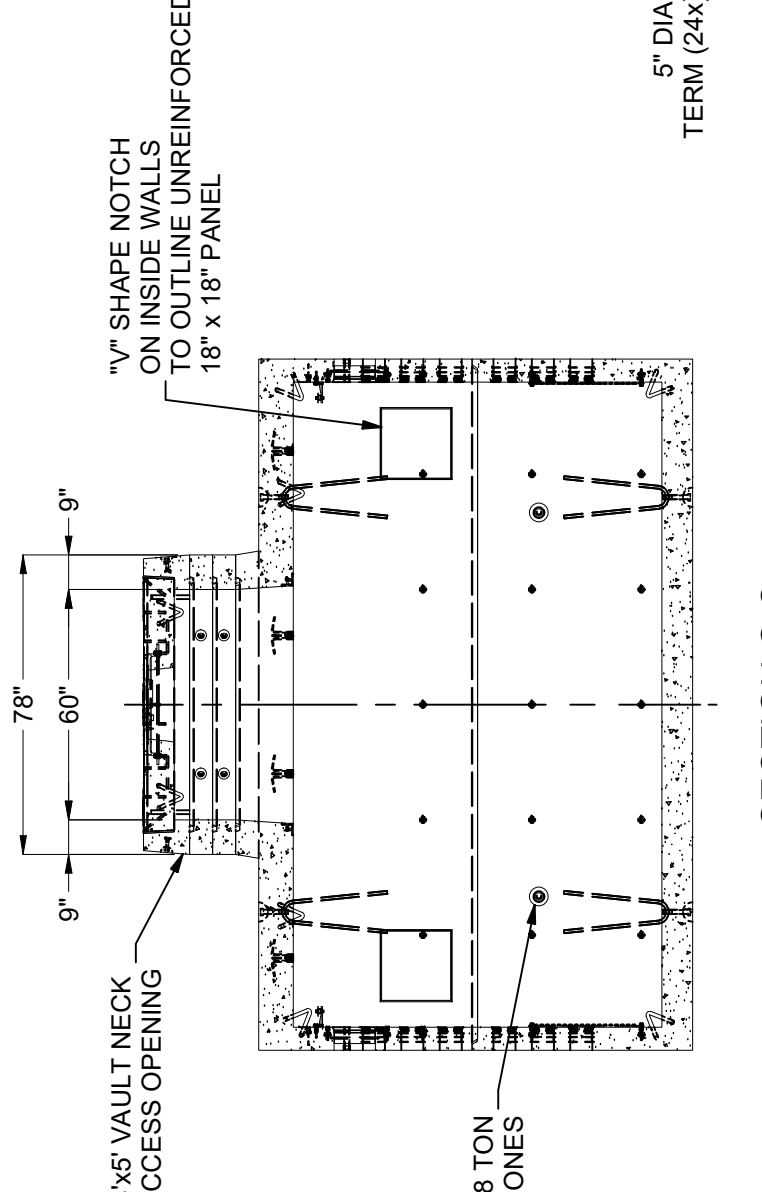
SECTION B-B



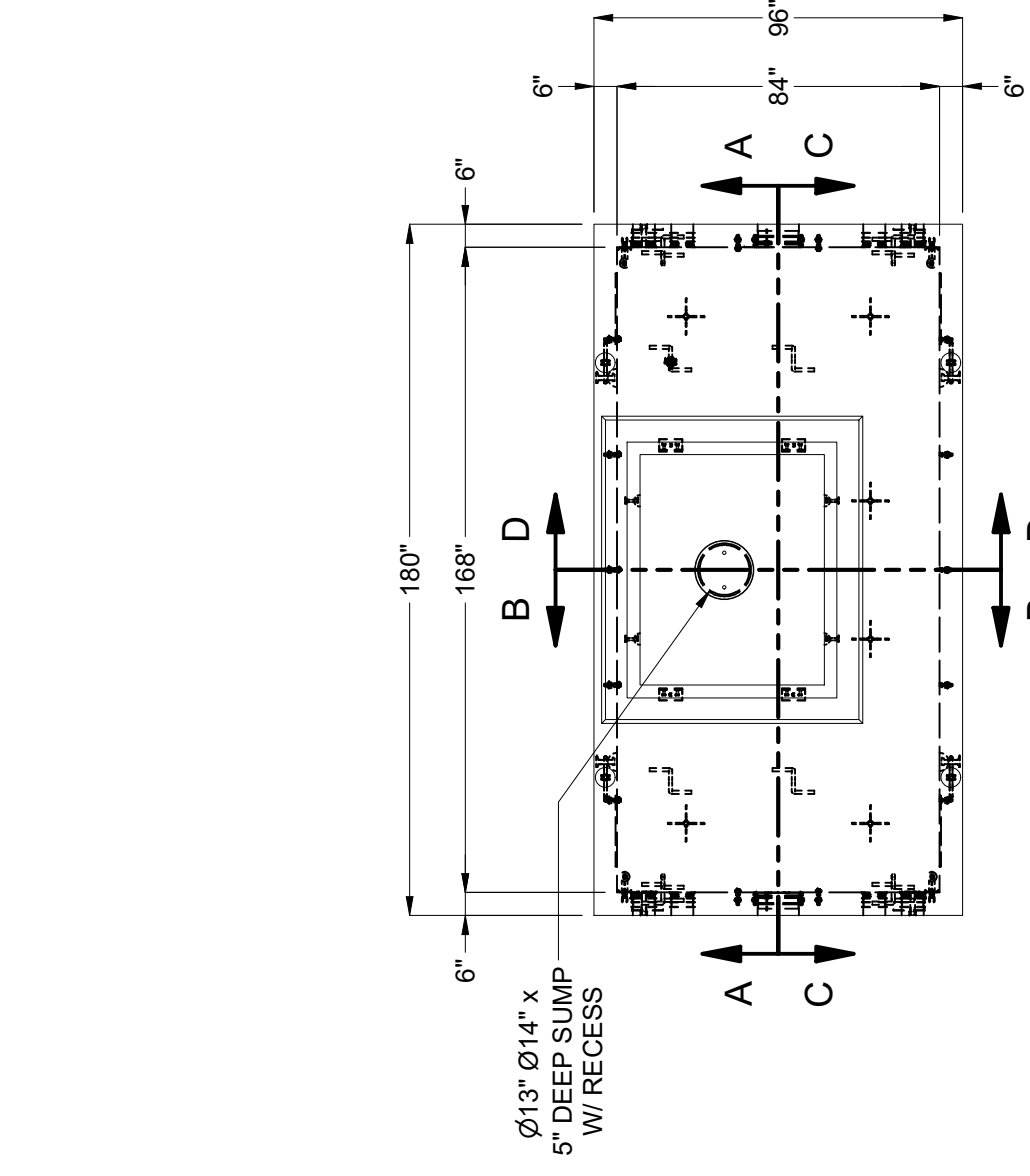
SECTION D-D



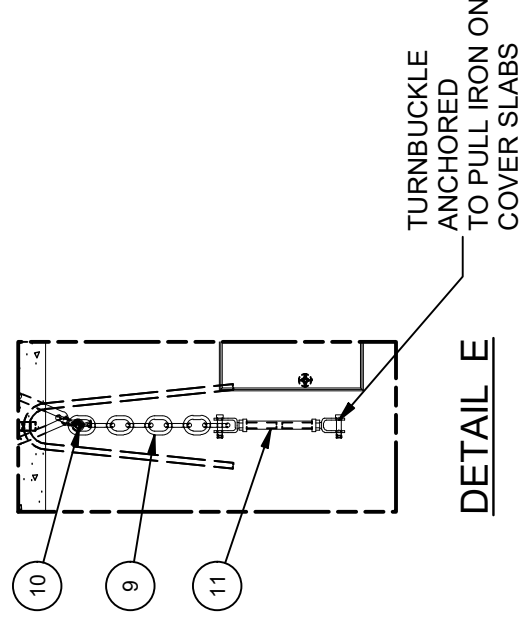
SECTION A-A



SECTION C-C



PLAN VIEW



DETAIL E

BURY DEPTH:	1.5' - 4.0' to Top	DESIGN SPEC:	ACI 318, ASTM C857	AGENCY:	EDISON
WATER LEVEL:	3.0'	LOADING SPEC:	A-16 (AASHTO HS20-44)	DESIGNED BY:	J. Prado
APPROX. WEIGHT:	56501.48 Lbs	AGENCY SPEC:	UGS VA 410	DRAWN BY:	J. Prado
DESCRIPTION:		Vault 84 168 Layout Assembly EDISON UGS VA 410 Int. Coating - White Latex Paint			
REV:		B-1 116			
SHEET:		2 OF 2			
PART NUMBER:		100010583			
CREATED:		2/21/2023			
LAYOUT DRAWING		MODIFIED: 2/21/2023			
©2023 Jensen Precast. All rights reserved. All materials appearing as Jensen Precast documents and the like are proprietary work product and are protected under U.S. copyright and other laws. Unless in conjunction with business conducted with Jensen Precast, any use of Jensen Precast work product without express, written consent is prohibited, and recipient is prohibited from distributing any and all work product to non-approved third parties under penalty of civil action.		WWW.JENSENPRECAST.COM			