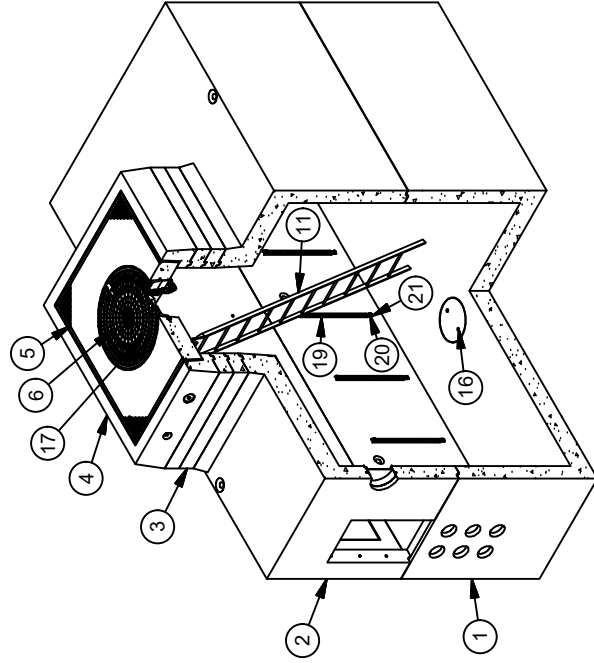


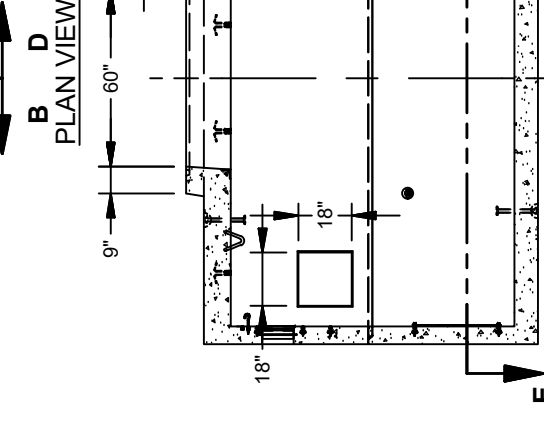
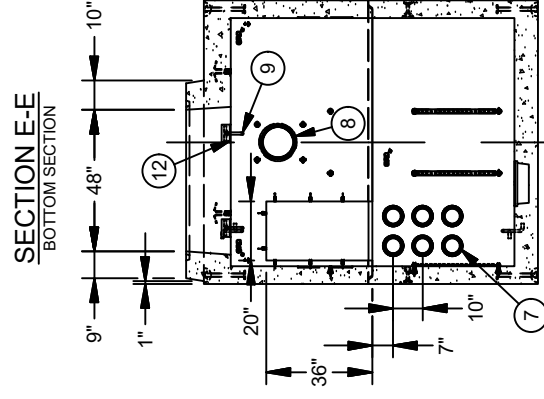
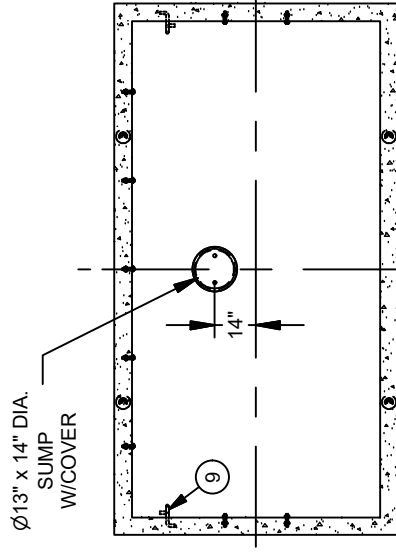
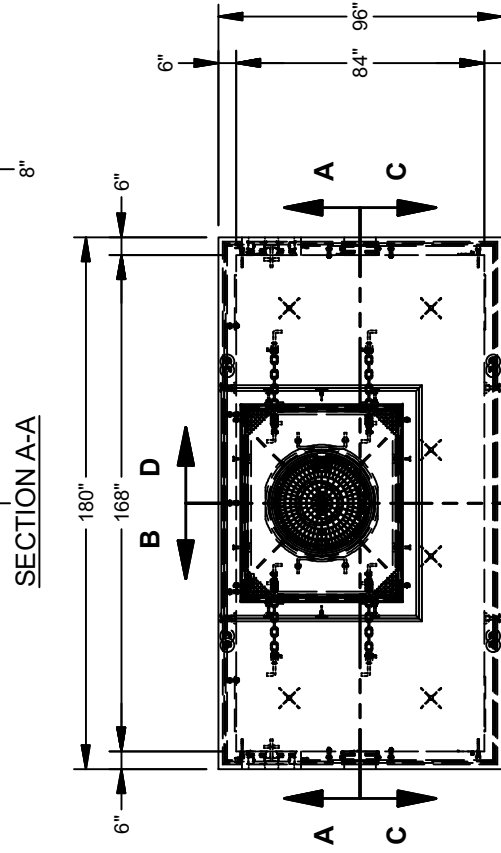
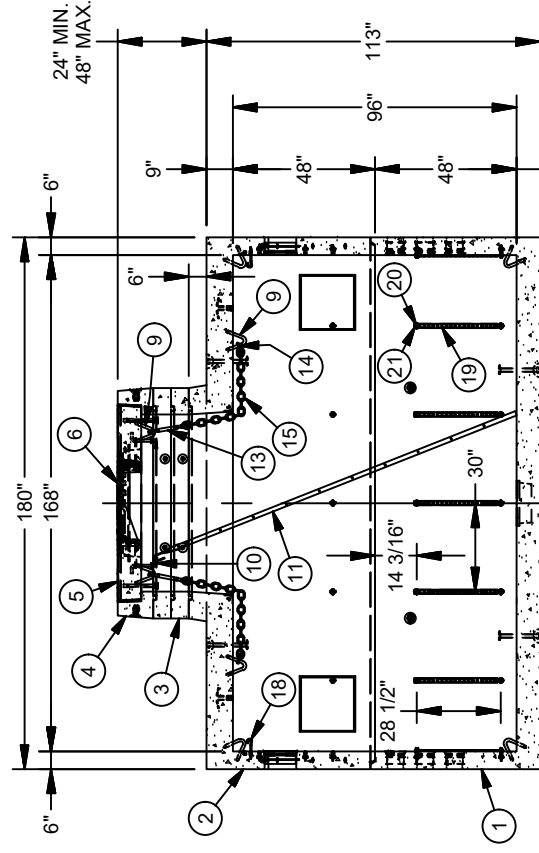
BILL OF MATERIALS

ITEM	PART NUMBER	DESCRIPTION	#	MOUNT	WEIGHT (lbs)
1	UV714-B48-11	7'-0" X 14'-0" X 4'-0" BOTTOM SECTION	1		25128
2	UV714-T48-INT-11	7'-0" X 14'-0" X 4'-0" TOP SECTION INT, 20"W x 36"H SLOT	1		24541
3	VN45-R6	4'-0" X 5'-0" X 0'-6" RISER	2		1167
4	VN45-N12-11	NECK, 4'-0" X 5'-0" X 1'-0" EDISON	1		1710
5	VN45-T8-11S	COVER SLAB, 4' X 5' X 8" W/30" DIA. RING NF-15812024 ED, DIAMOND PLATE IMPRINT	1		1731
6	04-30-114	COVER 30" SWIVELCOC "EDISON"	1		
7	55-30-52	TERMINATOR, 5" DIA. BLK W/SEAL T5001 MA	12	CORE	
8	55-30-80	10" DIA. PLASTIC VENT COUPLER W/CAP	2	CORE	
9	55-35-06	PULL IRON, 78" x 6" GALV.	12	TOP/BOTTOM SECTION & COVER SLAB	
10	55-35-20	LADDER, STEP GALV. EDISON CAST-IN	2	COVER SLAB	
11	15-10-25	LADDER, 11' ED/LA GALV.	1		
12	55-11-336	EMBEDDED STAINLESS STEEL ANGLE 3"x3"x1/4"-6" LONG	4	TOP SECTION	
13	20-10-813	3/4" THREAD SIZE GALV. CLEVIS TO CLEVIS (5/8" DIA. PINS W/COTTER PINS) TURNBUCKLE	4		
14	20-10-811	5/8" GALV. SHACKLE WITH 3/4" PIN W/ COTTER PINS	4		
15	20-10-810	1/2" GALV. CHAIN, GRADE 30 (FIELD CUT)	30 ft.		
16	SC13-SUMP	SUMP COVER FOR 13"SUMP(15"OD)GALV DIA PLATE	1		
17	20-30-06	PLUG, RUBBER PICKHOLE ED/LA C.I. COVER	1		
18	20-10-461	BOLT, 1/2"x6" J' GALV.	4		
19	18-10-18	CABLE RACK, 18 HOLE GALV. W/TABS	9		
20	20-10-422	BOLT, 1/2"x2 1/2" HEX HD SS A304	18		
21	20-25-45	WASHER, 1/2" FLAT SS A304	18		
22	20-10-610	BOLT, 3/4" X 10 1/2" COIL POST YELLOW DIP	4	SHIP LOOSE	
23	20-20-60	NUT, 3/4" HEX COIL POST YELLOW DIP	8	SHIP LOOSE	
24	20-25-61	WASHER, 3/4" CUT PLATED	8	SHIP LOOSE	



NOTES:

- DESIGNED IN ACCORDANCE WITH AASHTO H-20-44 TRAFFIC BRIDGE LOADING USING 5,500 PSI COMPRESSIVE STRENGTH CONCRETE AND 60,000 PSI YIELD STRENGTH ASTM A-706 STEEL REINFORCEMENT PER CALCS. #31004.
- COVER DESIGN FOR TRAFFIC LOADING.
- LIMIT OF COVER OVER ROOF SECTION IS 1'-6" TO 4'-0".
- VAULT TO BE PLACED ON A MIN. 6" BASE OF CRUSHER RUN FOR EASE OF INSTALLATION AND EVEN LOAD DISTRIBUTION.
- CONCRETE MIX USED IN POURING THIS PRODUCT SHALL USE FLY ASH AS AN ADMIXTURE.
- FINISH COATING: ALL INTERIOR WALLS AND CEILING SHALL BE PAINTED WHITE.
- ALL PARTS TO BE STENCILED: MFG DATE / JOB NUMBER / PRODUCT ID / WEIGHT.
- MINIMUM EXCAVATION SIZE: 9'-0" X 16'-0" DEPTH REQD.



PLAN VIEW

"V" SHAPE NOTCH ON INSIDE WALLS TO OUTLINE UNREINFORCED 18" x 18" PANEL



©2018 Jensen Precast. All rights reserved. All materials appearing as Jensen Precast documents and the like are proprietary work, product and are protected under U.S. copyright and other laws. Unless in conjunction with business conducted with Jensen Precast, any use of Jensen Precast work product without the express written consent of Jensen Precast is prohibited, and recipient is prohibited from distributing any and all work product to any third party without the prior written consent of Jensen Precast.

REV	DATE	DESCRIPTION	BY

REVISION HISTORY

AGENCY: EDISON AGENCY SPEC: UGS VA 410

MANUFACTURING: ASTM C858

FILENAME: K714-FV96-INT-11TCOMP.idw

FILENAME: K714-FV96-INT-11TCOMP.idw

SHEET: 1 OF 1

REV:

117

K714-FV96-INT-11TCOMP.idw