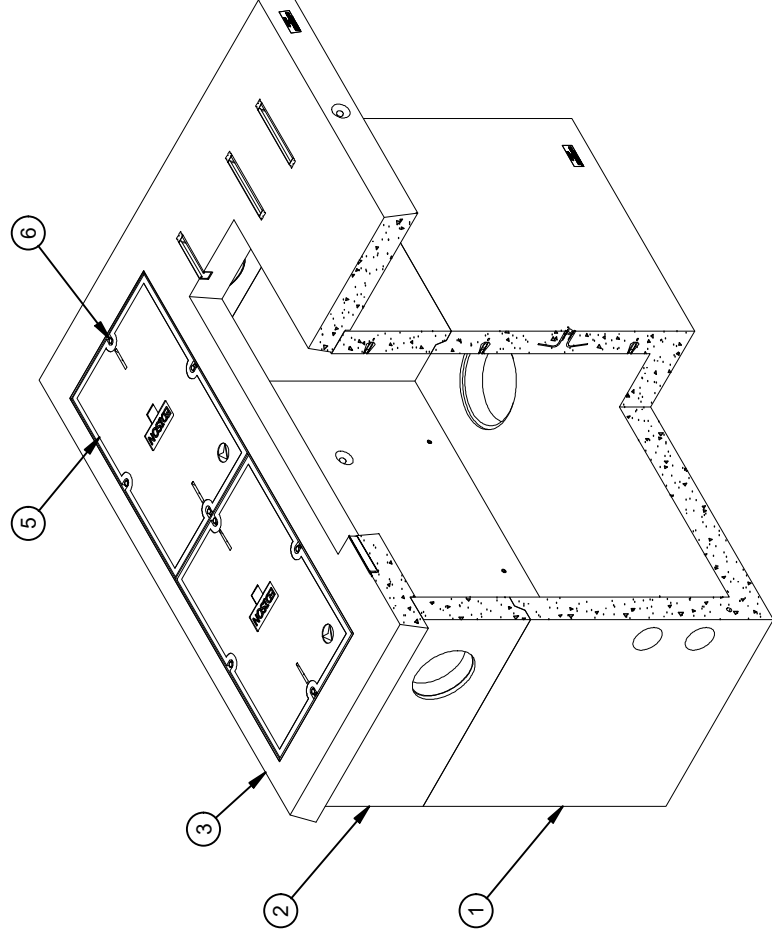


DESIGN NOTES

- SUBSTRUCTURE DESIGNED IN ACCORDANCE WITH AASHTO HS20-44 TRAFFIC BRIDGE LOADING USING 5,500 PSI COMPRESSIVE STRENGTH CONCRETE AND 60,000 PSI YIELD STRENGTH ASTM A-706 STEEL REINFORCEMENT PER CALCS. #33540.
- TRANSFORMER PAD DESIGNED IN ACCORDANCE 300 PSF LOADING USING 5,500 PSI COMPRESSIVE STRENGTH CONCRETE AND 60,000 PSI YIELD STRENGTH ASTM A-706 STEEL REINFORCEMENT PER CALCS. #33540.
- COVER IS DESIGNED FOR 300 PSF LOADING
- VAULT TO BE PLACED ON A MIN. 6" BASE OF CRUSHER RUN FOR EASE OF INSTALLATION AND EVEN LOAD DISTRIBUTION.
- CONCRETE MIX USED IN POURING THIS PRODUCT SHALL USE FLY ASH AS AN ADMIXTURE.
- MINIMUM EXCAVATION SIZE: 5'-10" X 8'-10" X DEPTH REQ'D.
- ALL PARTS TO BE STENCILED: MFG DATE / JOB NUMBER / PRODUCT ID / WEIGHT.
- STENCIL "GRD" IN RED LETTERS.
- FOR COMPLETE DESIGN AND PRODUCT INFORMATION CONTACT JENSEN PRECAST.

BILL OF MATERIALS

ITEM	UNIT QTY	QTY	PART NUMBER	DESCRIPTION	MASS (lb)
1	1	1	100012782	Vault 4884x42 Rect. Bottom Section Terminators Sump EDISON SS537, SB-5	7822
2	1	1	100012429	Riser 4884x19 Rect. Riser EDISON SS537, SB-5	2362
3	1	1	100012738	Pad PD8496x5.25 24"x76"E EDISON SS537, SB-5	2699
4	1	1	100006392	STRUCTURAL BEAM STEEL GALV SCB47-140	28
5	1	2	100007027	COVER 2436 POLYMER EDISON	163
6	1	8	100008105	PENTA BOLT 1/2-13 UNC 2-1/2 304SS W/CAPWASH	
7	1	2	100039695	PLATE CONNECTION 10GA STEEL GALV 5x1.5"	
8	1	4	100003501	BOLT HEX 3/8-16 UNC 1.5 ZINC	
9	1	4	100002653	WASHER FLAT 3/8 WIDE TYPE A ZINC	
10	1,000 ul	1,000 ul	100005749	SEALANT JOINT BUTYL RUBBER ASTM C-990 AND M198 CS-102 1IN EQUIV X14.5FT PER BOX 118FT	



ISOMETRIC VIEW

LIFTING NOTES

■ FIELD INSTALLATION: PLANT DEMOLING: MINIMUM HANDLING CONCRETE STRENGTH F<sub>c</sub> = 5500 PSI RIGGING EQUALIZER REQUIRED TO EQUALIZE LOAD TO 4 LIFTING POINTS WITH A SLING ANGLE BETWEEN 60° AND 90°

BURY DEPTH:	0.0' - 0.0' to Top
WATER LEVEL:	3.0'
DESIGN SPEC:	ASTM C857, ACI 318
AGENCY:	EDISON
APPROX. WEIGHT:	13238.89 Lbs
LOADING SPEC:	A-16 (AASHTO HS20-44)
AGENCY SPEC:	SS537, SB-5

REVISION HISTORY

REV	DESCRIPTION	DATE	APPROVED
B	INVENTOR DRAWINGS CREATED	2/24/2022	

DESCRIPTION:  
Utility Vault 4884 Layout Assembly EDISON SS537, SB-5

REV: B-1

SHEET: 98

PART NUMBER: 100010590 LAYOUT REVIEW

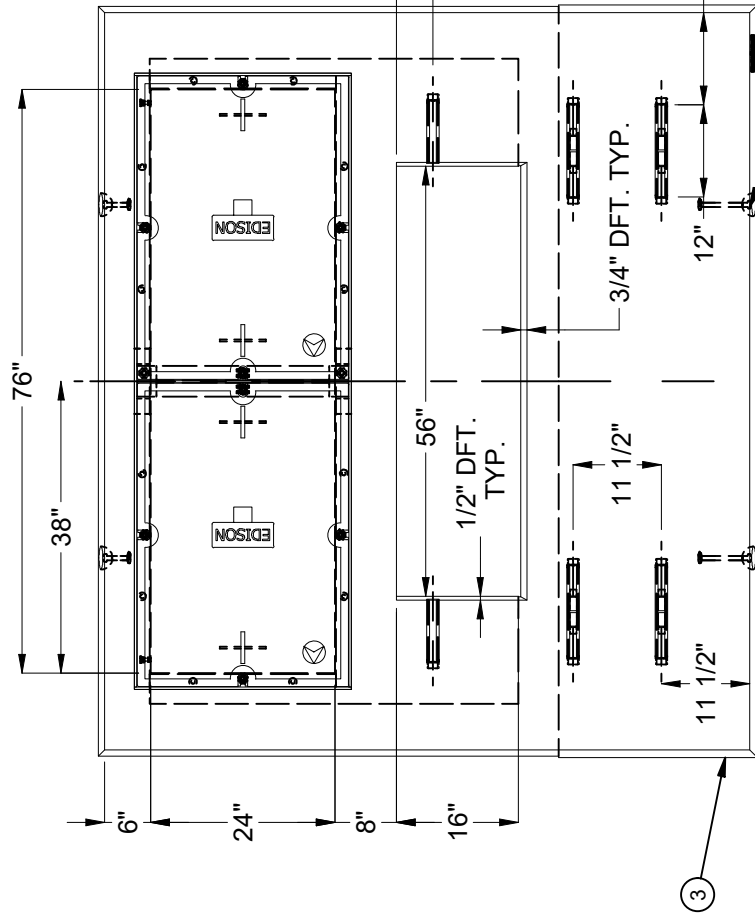
DRAWN BY: M. Zaragoza

CREATED: 3/19/2018 MODIFIED: 2/24/2022

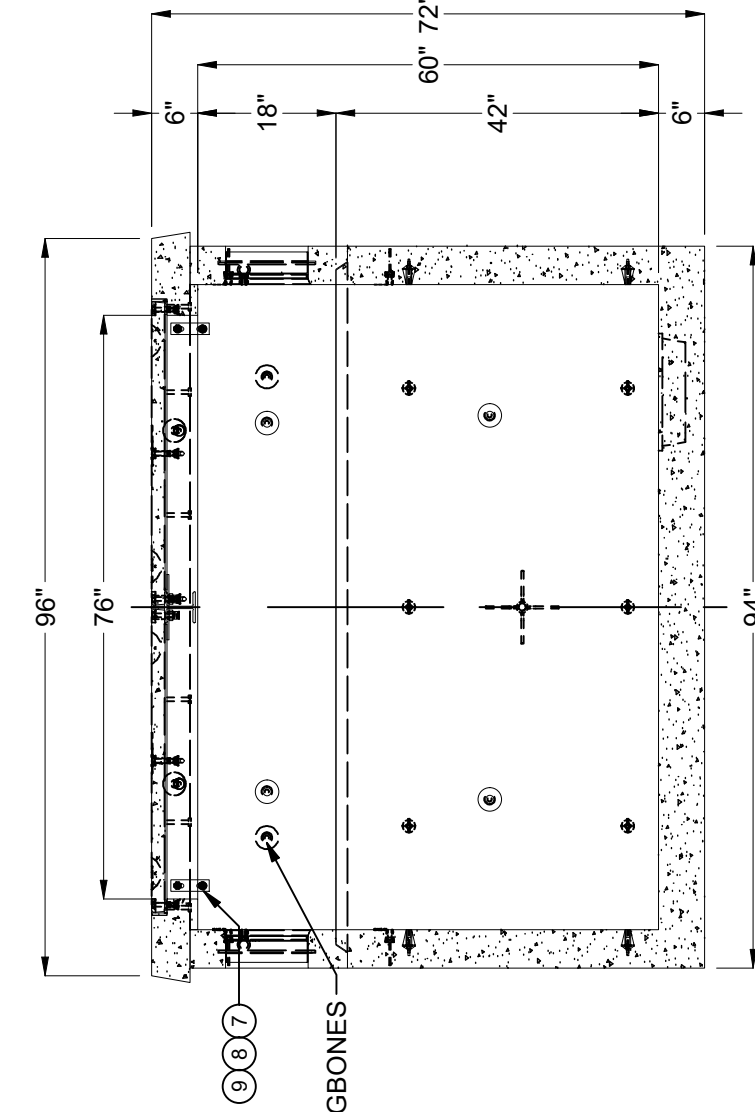
©2022 Jensen Precast. All rights reserved. All materials appearing as Jensen Precast documents and the like are proprietary work product and are protected under U.S. copyright and other laws. Unless in conjunction with business conducted with Jensen Precast, any use of Jensen Precast work product without express, written consent is prohibited, and recipient is prohibited from distributing any and all work product to non-approved third parties under penalty of civil action.

**JENSEN PRECAST** EST. 1968

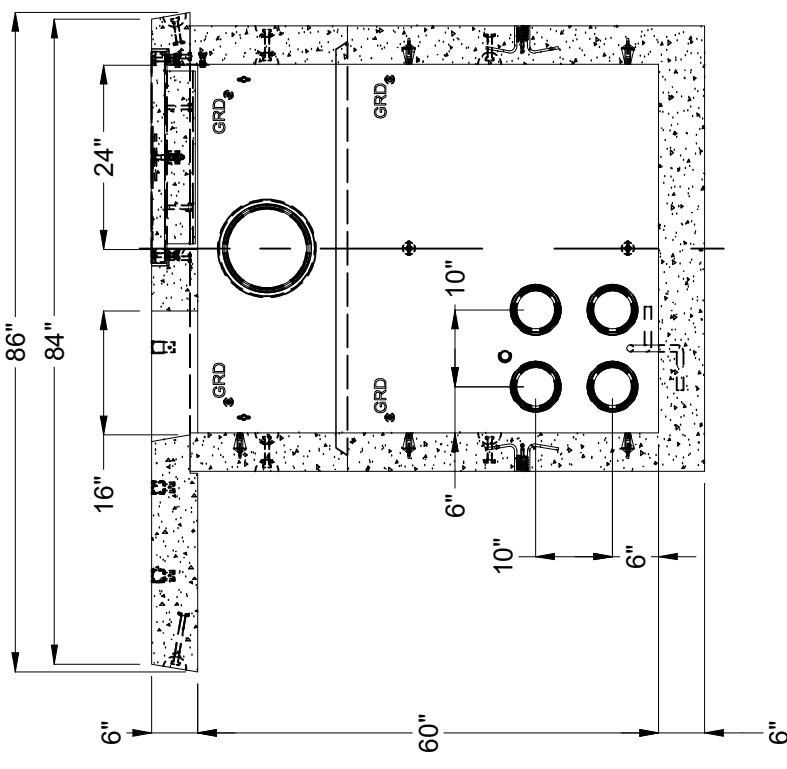
WWW.JENSENPRECAST.COM



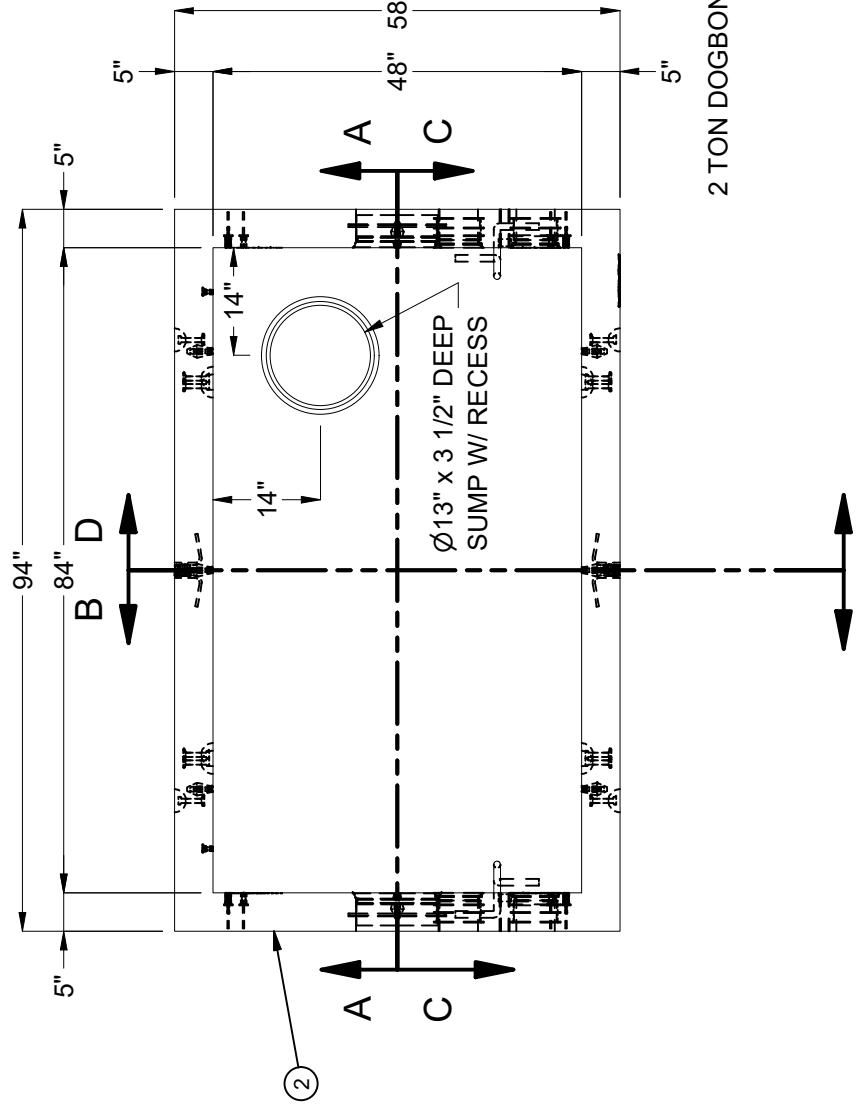
PLAN VIEW OF TRANSFORMER PAD



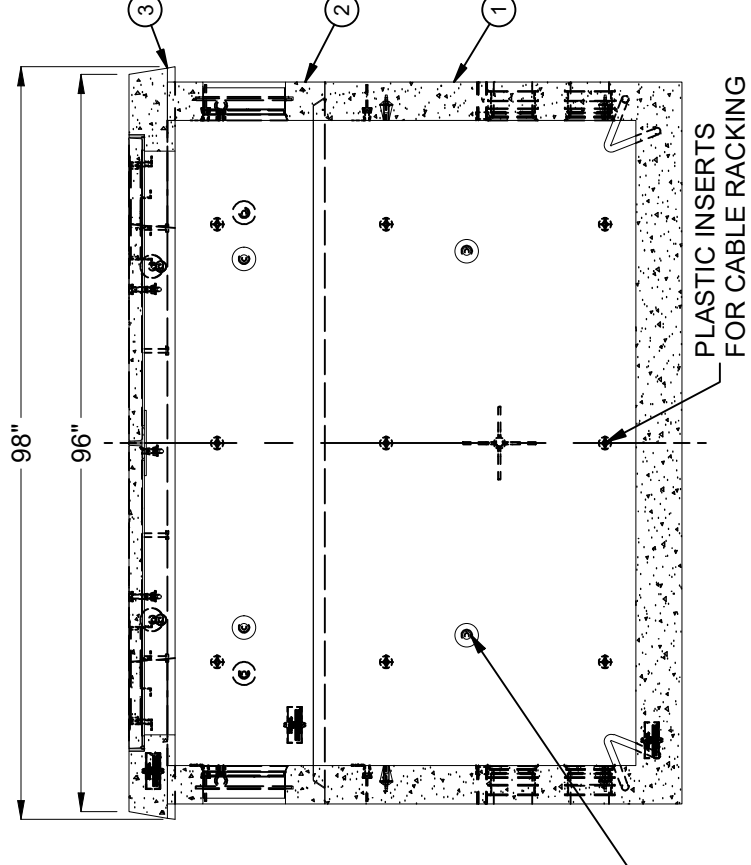
SECTION A-A



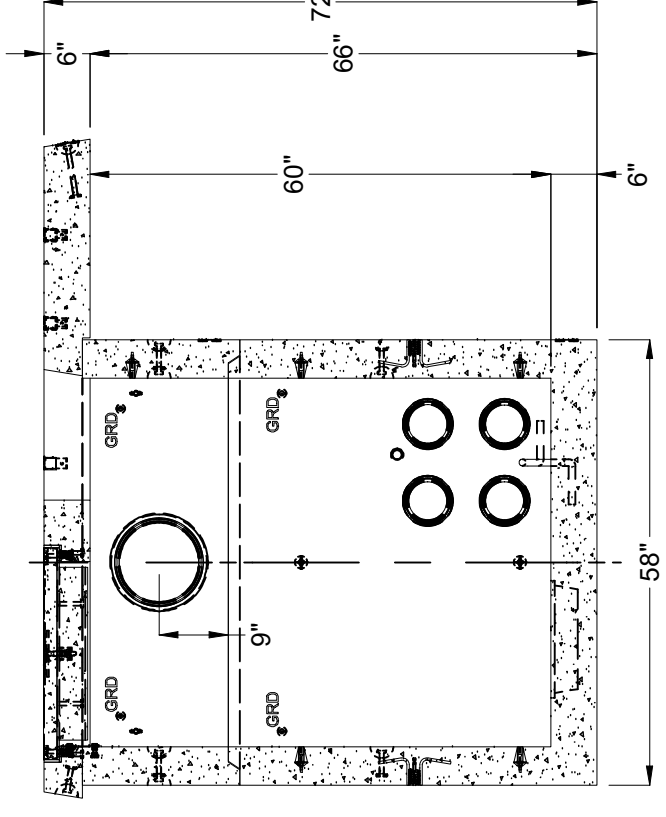
SECTION B-B



PLAN VIEW W/O EQUIPMENT PAD



SECTION C-C



SECTION D-D

BURY DEPTH:	0.0' - 0.0' to Top
WATER LEVEL:	3.0'
DESIGN SPEC:	ASTM C857, ACI 318
AGENCY:	EDISON
APPROX. WEIGHT:	13238.89 Lbs
LOADING SPEC:	A-16 (AASHTO HS20-44)
AGENCY SPEC:	SS537, SB-5

**JENSEN PRECAST** EST. 1968  
 WWW.JENSENPRECAST.COM

©2022 Jensen Precast. All rights reserved. All materials appearing as Jensen Precast documents and the like are proprietary work product and are protected under U.S. copyright and other laws. Unless in conjunction with business conducted with Jensen Precast, any use of Jensen Precast work product without express, written consent is prohibited, and recipient is prohibited from distributing any and all work product to non-approved third parties under penalty of civil action.

DESCRIPTION:	Utility Vault 4884 Layout Assembly EDISON SS537, SB-5
PART NUMBER:	100010590
CREATED:	3/19/2018
LAYOUT DRAWING	
DRAWN BY:	M. Zaragoza
MODIFIED:	2/24/2022
REV:	B-1
SHEET:	9
	2 OF 2

MP1'06S010001