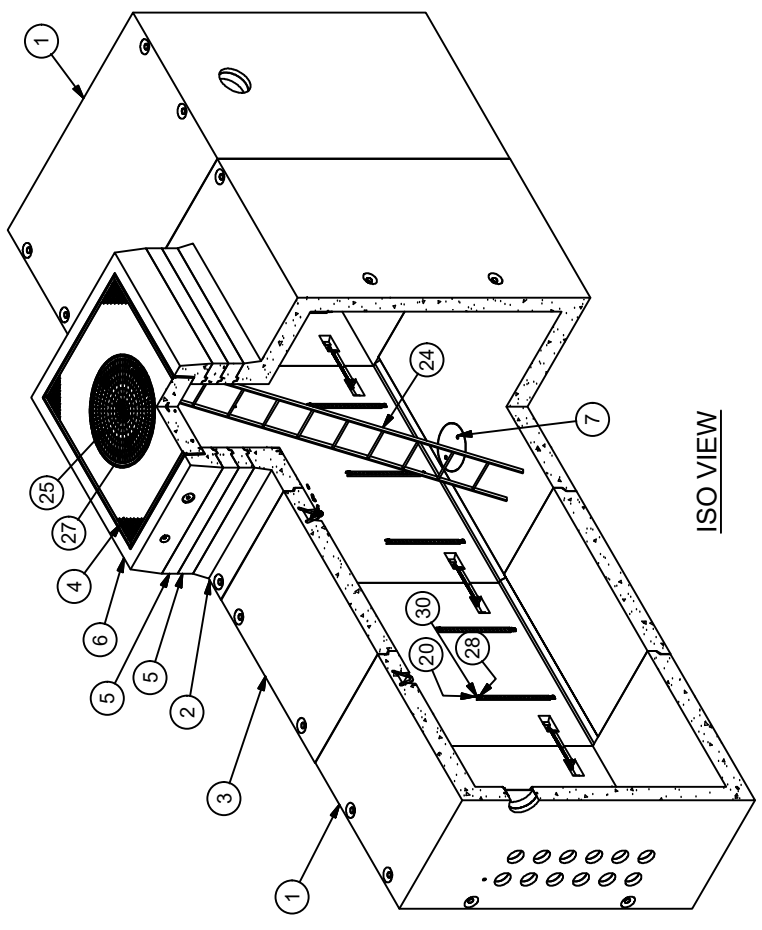
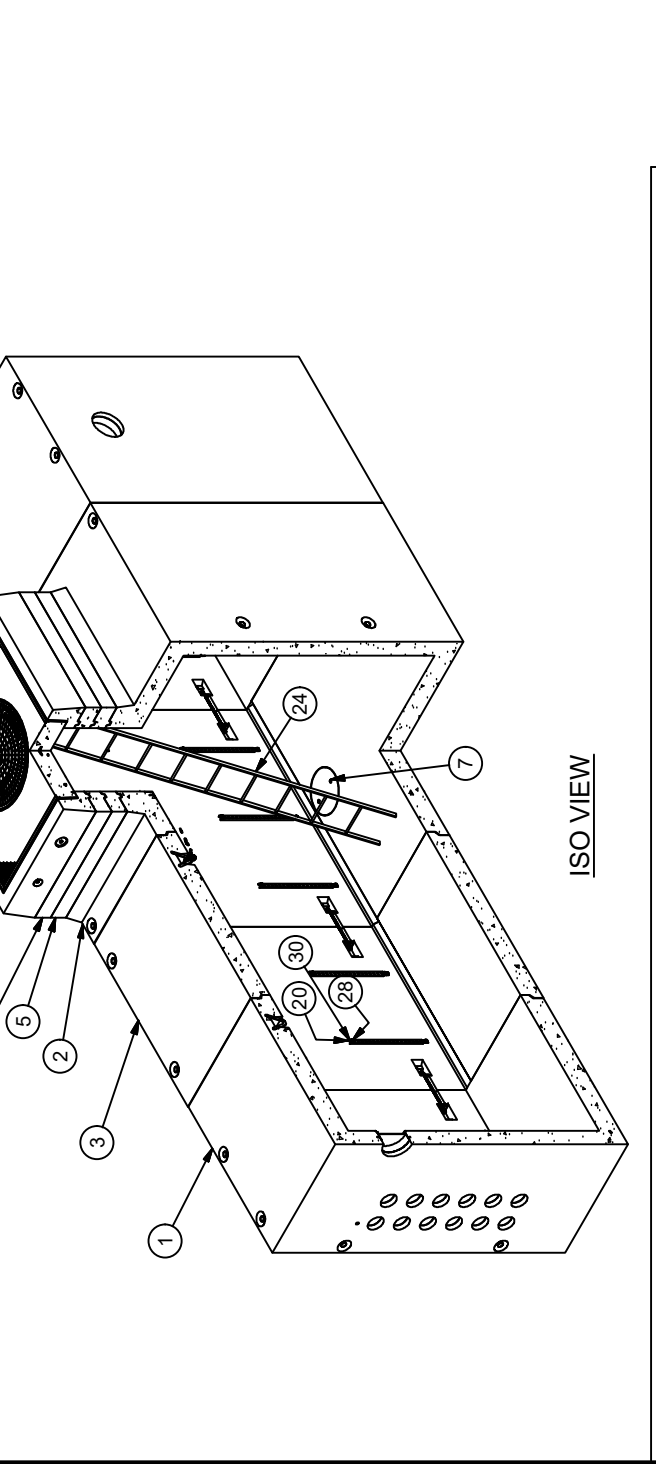
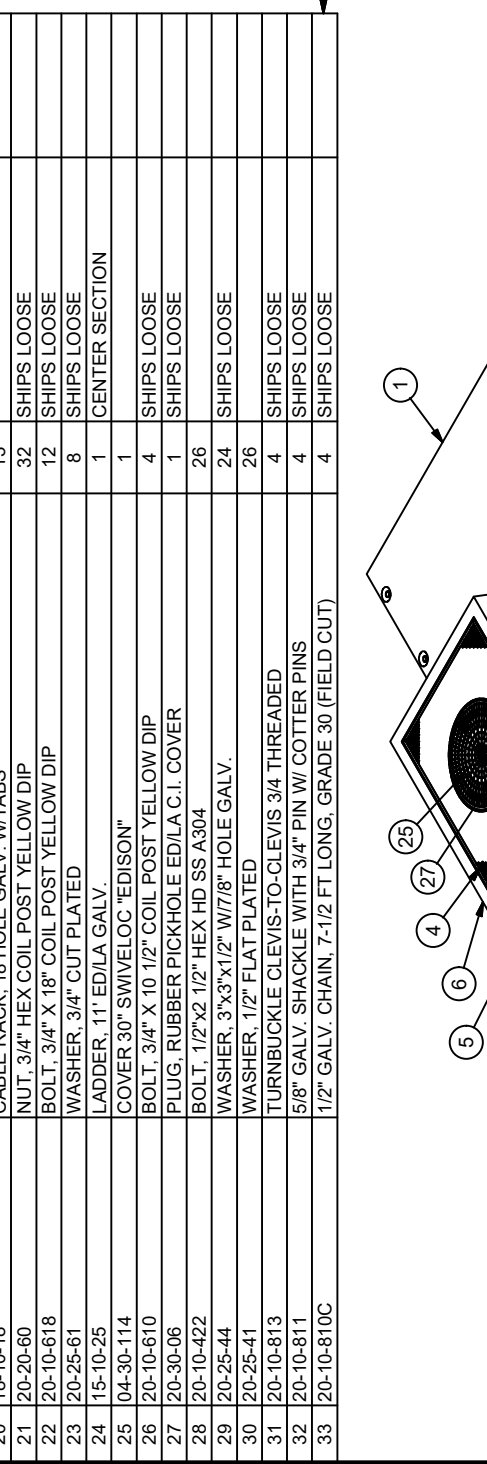
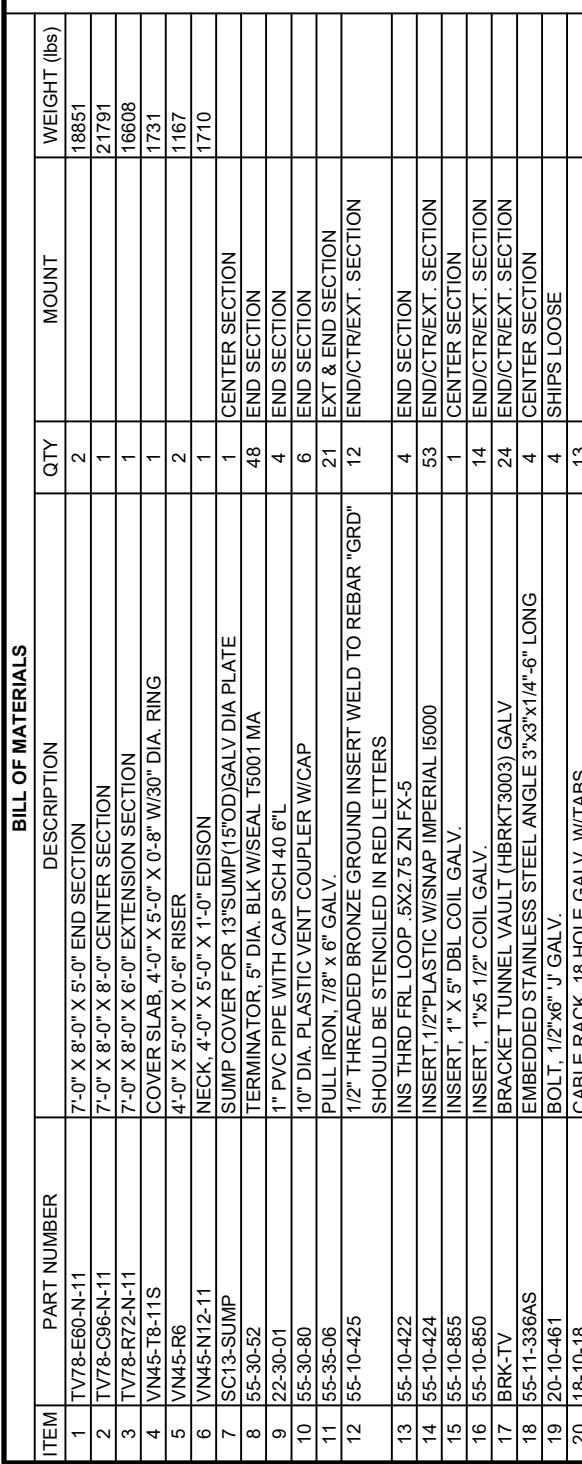
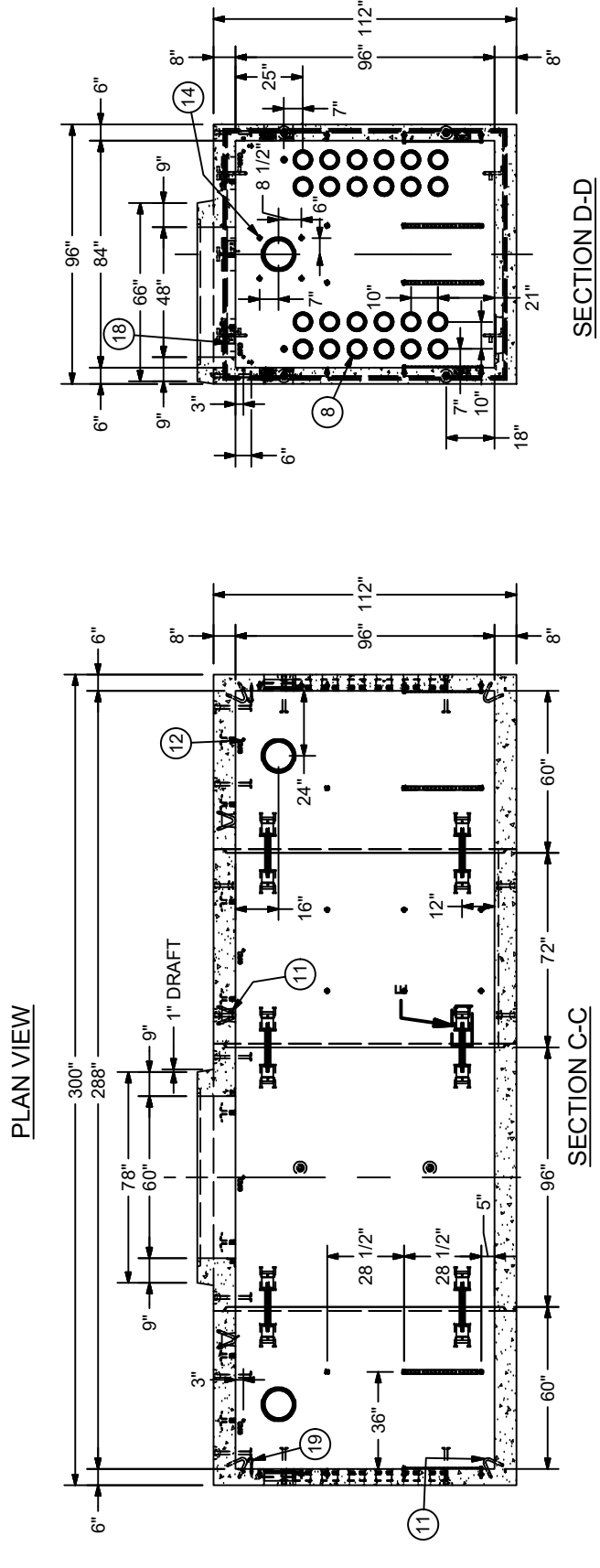
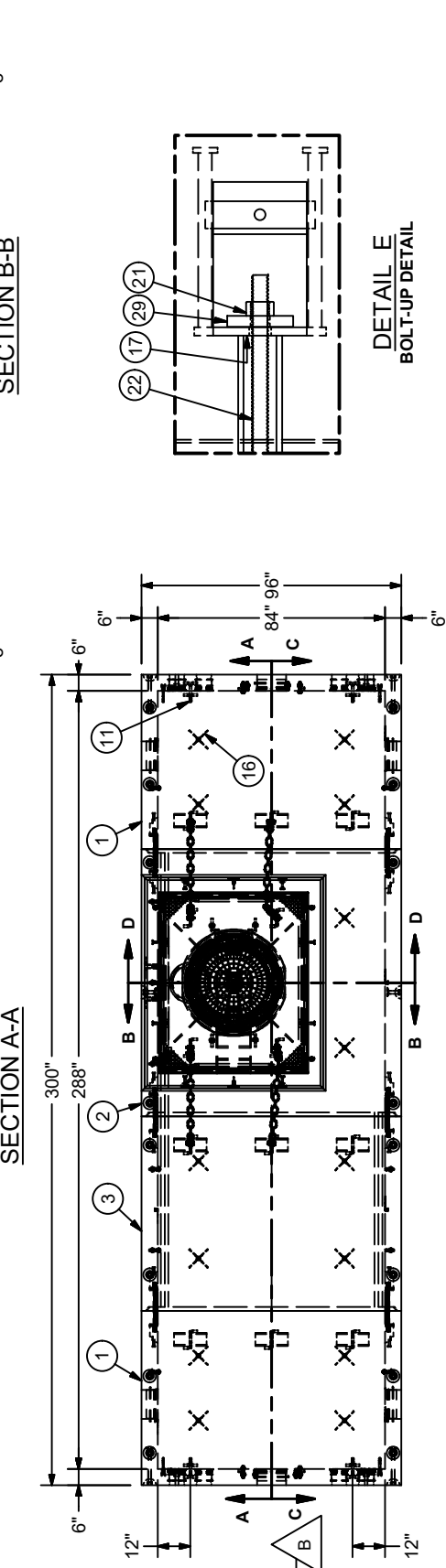
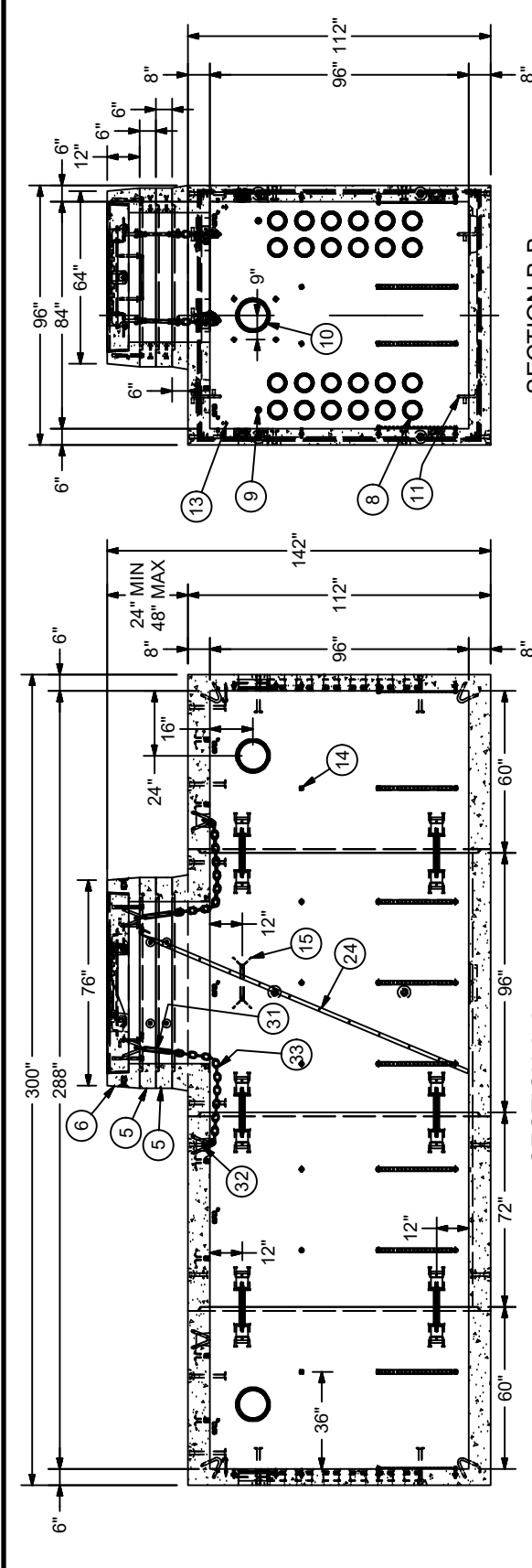


ITEM	PART NUMBER	DESCRIPTION	QTY	MOUNT	WEIGHT (lbs)
1	TV78-E60-N-11	7'-0" X 8'-0" X 5'-0" END SECTION	2		18851
2	TV78-C95-N-11	7'-0" X 8'-0" X 8'-0" CENTER SECTION	1		21791
3	TV78-R72-N-11	7'-0" X 8'-0" X 6'-0" EXTENSION SECTION	1		16608
4	VN45-T8-11S	COVER SLAB, 4'-0" X 5'-0" X 0'-8" W/30" DIA. RING	1		1731
5	VN45-R6	4'-0" X 5'-0" X 0'-6" RISER	2		1167
6	VN45-N12-11	NECK, 4'-0" X 5'-0" X 1'-0" EDISON	1		1710
7	SC13-SUMP	SUMP COVER FOR 13" SUMP (15" O.D.) GALV DIA PLATE	1	CENTER SECTION	
8	55-30-52	TERMINATOR, 5" DIA. BLK W/SEAL T5001 MA	48	END SECTION	
9	22-30-01	1" PVC PIPE WITH CAP SCH 40 6'L	4	END SECTION	
10	55-30-80	10" DIA. PLASTIC VENT COUPLER W/CAP	6	END SECTION	
11	55-35-06	PULL IRON, 7/8" x 6" GALV.	21	EXT & END SECTION	
12	55-10-425	1/2" THREADED BRONZE GROUND INSERT WELD TO REBAR "GRD" SHOULD BE STENCILED IN RED LETTERS	12	END/C/TREXT. SECTION	
13	55-10-422	INS THRD FRL LOOP .5X2.75 ZN FX-5	4	END SECTION	
14	55-10-424	INSERT, 1/2" PLASTIC W/ SNAP IMPERIAL I5000	53	END/C/TREXT. SECTION	
15	55-10-855	INSERT, 1" X 5" DBL COIL GALV.	1	CENTER SECTION	
16	55-10-850	INSERT, 1"x5 1/2" COIL GALV.	14	END/C/TREXT. SECTION	
17	BRK-TV	BRACKET TUNNEL VAULT (HBRKT3003) GALV	24	END/C/TREXT. SECTION	
18	55-11-336AS	EMBEDDED STAINLESS STEEL ANGLE 3"x3"x1/4"-6" LONG	4	CENTER SECTION	
19	20-10-461	BOLT, 1/2"x6" J GALV.	4	SHIPS LOOSE	
20	18-10-18	CABLE RACK, 18 HOLE GALV. W/TABS	13		
21	20-20-60	NUT, 3/4" HEX COIL POST YELLOW DIP	32	SHIPS LOOSE	
22	20-10-618	BOLT, 3/4" X 18" COIL POST YELLOW DIP	12	SHIPS LOOSE	
23	20-25-61	WASHER, 3/4" CUT PLATED	8	SHIPS LOOSE	
24	15-10-25	LADDER, 11" ED/LA GALV.	1	CENTER SECTION	
25	04-30-114	COVER 30" SWIVELOC "EDISON"	1		
26	20-10-610	BOLT, 3/4" X 10 1/2" COIL POST YELLOW DIP	4	SHIPS LOOSE	
27	20-30-06	PLUG, RUBBER PICKHOLE ED/LA C.I. COVER	1	SHIPS LOOSE	
28	20-10-422	BOLT, 1/2"x2 1/2" HEX HD SS A304	26		
29	20-25-44	WASHER, 3"x3"x1/2" W/7/8" HOLE GALV.	24	SHIPS LOOSE	
30	20-25-41	WASHER, 1/2" FLAT PLATED	26		
31	20-10-813	TURNBUCKLE CLEVIS-TO-CLEVIS 3/4" THREADED	4	SHIPS LOOSE	
32	20-10-811	5/8" GALV. SHACKLE WITH 3/4" PIN W/ COTTER PINS	4	SHIPS LOOSE	
33	20-10-810C	1/2" GALV. CHAIN, 7-1/2 FT LONG, GRADE 30 (FIELD CUT)	4	SHIPS LOOSE	



**JENSEN PRECAST** EST. 1968  
 825 STENERI WAY  
 SPARKS, NV 89431  
 WWW.JENSENPRECAST.COM

©2016 Jensen Precast. All rights reserved. All materials appearing as Jensen Precast documents and the like are proprietary work, product and are protected under U.S. copyright and other laws. Unless in conjunction with business conducted with Jensen Precast, any use of Jensen Precast work products without the express written consent of Jensen Precast is prohibited, and recipient is prohibited from distributing any and all work product to non-approved third parties under penalty of civil action.

VAULT DESC: 7'-0" X 8'-0" FLAT WALL TUNNEL VAULT X 24'-0" LONG  
 PART ID: K78-TV24-N-11TCOMP  
 JOB NO:  
 DATE CREATED: 1/5/2018  
 DATE MODIFIED: 12/21/2017  
 DRAWN BY: RRAMOS  
 SHEET: 1 OF 1  
 REV: B

SPECIAL HANDLING NOTE: THIS CONCRETE PRODUCT IS DESIGNED TO BE LIFTED WITH 4 (FOUR) EQUALLY LOADED RIGGINGS LEGS MIN. 60° SLING ANGLE, MEASURED FROM HORIZONTAL.

REV	DATE	DESCRIPTION	BY
A	2/21/2018	REVISED PULL IRONS TO BE RECESSED INTO CONCRETE.	RR
B	3/15/2018	REVISED CHAIN FROM 20-10-810 TO 20-10-810C	RR

REVISION HISTORY

MANUFACTURING SPEC: ASTM C858

AGENCY SPEC: UGS VA 411

NOTES:

- DESIGNED IN ACCORDANCE WITH AASHTO H-20-44 TRAFFIC BRIDGE LOADING USING 5,500 PSI COMPRESSIVE STRENGTH CONCRETE AND 60,000 PSI YIELD STRENGTH ASTM A-706 STEEL REINFORCEMENT PER CALCS. #31658.
- COVER DESIGN FOR TRAFFIC LOADING.
- LIMIT OF COVER OVER ROOF SECTION IS 1'-6" TO 4'-0".
- VAULT TO BE PLACED ON A MIN. 6" BASE OF CRUSHER RUN FOR EASE OF INSTALLATION AND EVEN LOAD DISTRIBUTION.
- CONCRETE MIX USED IN POURING THIS PRODUCT SHALL USE FLY ASH AS AN ADMIXTURE.
- FINISH COATING: ALL INTERIOR WALLS AND CEILING SHALL BE PAINTED WHITE.
- ALL PARTS TO BE STENCILED: MFG DATE / JOB NUMBER / PRODUCT ID / WEIGHT.
- MINIMUM EXCAVATION SIZE: 9'-0" X 26'-0" DEPTH REQ'D.