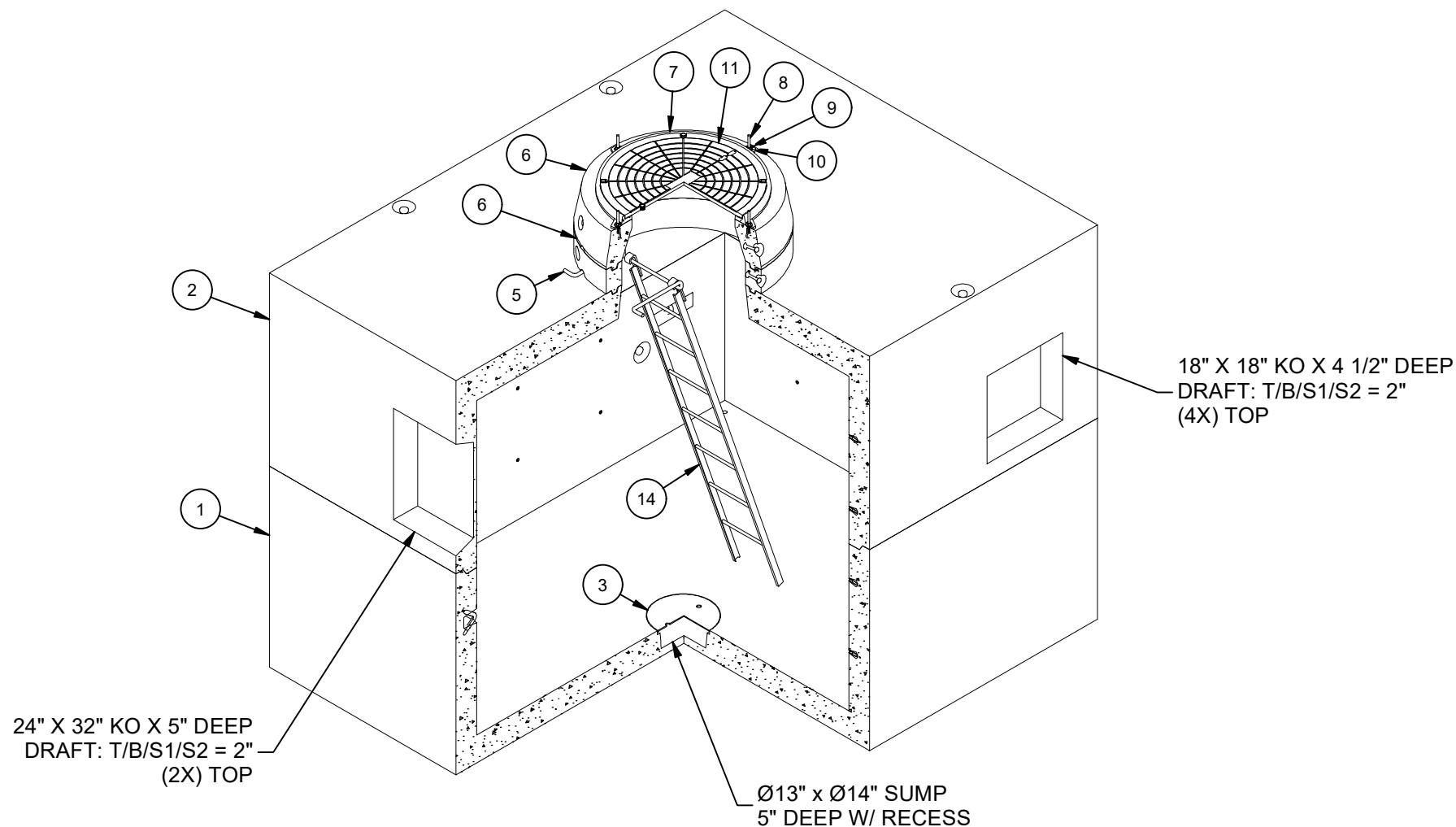


DESIGN NOTES

- DESIGNED IN ACCORDANCE WITH AASHTO HS20-44 BRIDGE LOADING USING 5,500 PSI COMPRESSIVE STRENGTH CONCRETE AND 60,000 PSI YIELD STRENGTH ASTM A-706 STEEL REINFORCEMENT PER CALCS. #32405.
- MINIMUM EXCAVATION SIZE: 10'-0" X 12'-0" X DEPTH REQ'D.
- COVER DESIGN FOR TRAFFIC LOADING.
- VAULT TO BE PLACED ON A MIN. 6" BASE OF CRUSHER RUN FOR EASE OF INSTALLATION AND EVEN LOAD DISTRIBUTION.
- ALL PARTS TO BE STENCILED: MFG DATE / JOB NUMBER / PRODUCT ID / WEIGHT.
- FOR COMPLETE DESIGN AND PRODUCT INFORMATION CONTACT JENSEN PRECAST.

BILL OF MATERIALS

| ITEM | UNIT QTY | QTY | PART NUMBER | DESCRIPTION | MASS (lb) |
|------|----------|----------|-------------|---|-----------|
| 1 | 1 | 1 | 100009719 | Vault 96120x42 Rect. Bottom Section Sump | 18695 |
| 2 | 1 | 1 | 100009725 | Vault 96120x42 Rect. Top Section 36"C Knockout | 17595 |
| 3 | 1 | 1 | 100006783 | SUMP COVER FOR 13"SUMP(15"OD)GALV DIA PLATE | |
| 4 | 1 | 1 | 100012117 | Grade Ring D3645x6 | 288 |
| 5 | 1 | 1 | 100002564 | LADDER STEP RUNG 12B31 TYPE 1 MH KNURLED GALV 3/4X16 | |
| 6 | 1 | 1 | 100012114 | Grade Ring D3036x9 | 538 |
| 7 | 1 | 1 | 100006934 | CI RING 30DIA NF R-1581 ASTM A-48 CL35B 2-FLANGE DOWN | 99 |
| 8 | 1 | 4 | 100008115 | STUD BOLT 1/2X5 UNC LEVELING PLAIN | |
| 9 | 1 | 4 | 100007007 | HEX NUT 1/2-13 UNC HEAVY GALV | |
| 10 | 1 | 4 | 100002657 | WASHER FLAT 1/2 REGULAR TYPE A RAW | |
| 11 | 1 | 1 | 100005903 | CI COVER 30DIA NF R-1581 ASTM A-48 CL35B B/D BLANK | 224 |
| 12 | 1 | 4 | 100007016 | BOLT HEX 5/8-11 UNC 1.625 304SS | |
| 13 | 1 | 1 | 100008122 | PLUG PICKHOLE NEOPRENE RUBBER CI COVER ED/LA | |
| 14 | 1 | 1 | 100009253 | LADDER HOOKED GALV 8FT ED/LA I3382 | |
| 15 | 1.000 ul | 1.000 ul | 100005749 | SEALANT JOINT BUTYL RUBBER ASTM C-990 AND M198 CS-102 1IN EQUIV X14.5FT PER BOX 118FT | |



ISOMETRIC VIEW

LIFTING NOTES

- THIS CONCRETE PRODUCT IS DESIGNED TO BE LIFTED WITH 4 EQUALLY LOADED RIGGINGS LEGS MIN. 60° SLING ANGLE, MEASURED FROM HORIZONTAL.

| | | | |
|--------------|--------------------|-----------------|-----------------------|
| BURY DEPTH: | 0.0' - 4.0' to Top | | |
| WATER LEVEL: | 3.0' | APPROX. WEIGHT: | 37493.33 Lbs |
| DESIGN SPEC: | ACI 318,ASTM C857 | LOADING SPEC: | A-16 (AASHTO HS20-44) |
| AGENCY: | AGENCY SPEC: | | |



©2024 Jensen Precast- All rights reserved.
All materials appearing as Jensen Precast documents and the like are proprietary work product and are protected under U.S. copyright and other laws.
Unless in conjunction with business conducted with Jensen Precast, any use of Jensen Precast work product without express, written consent is prohibited, and recipient is prohibited from distributing any and all work product to non-approved third parties under penalty of civil action.

REVISION HISTORY

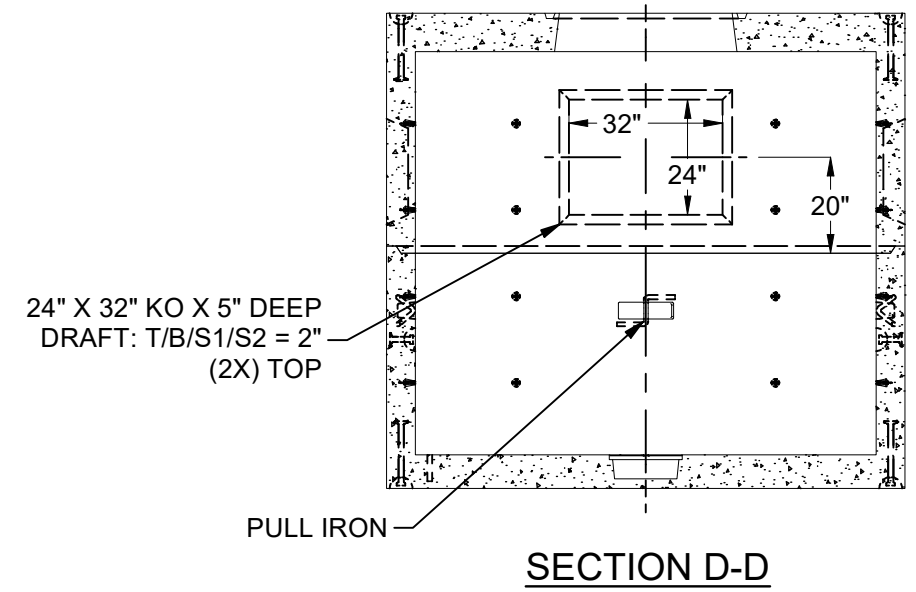
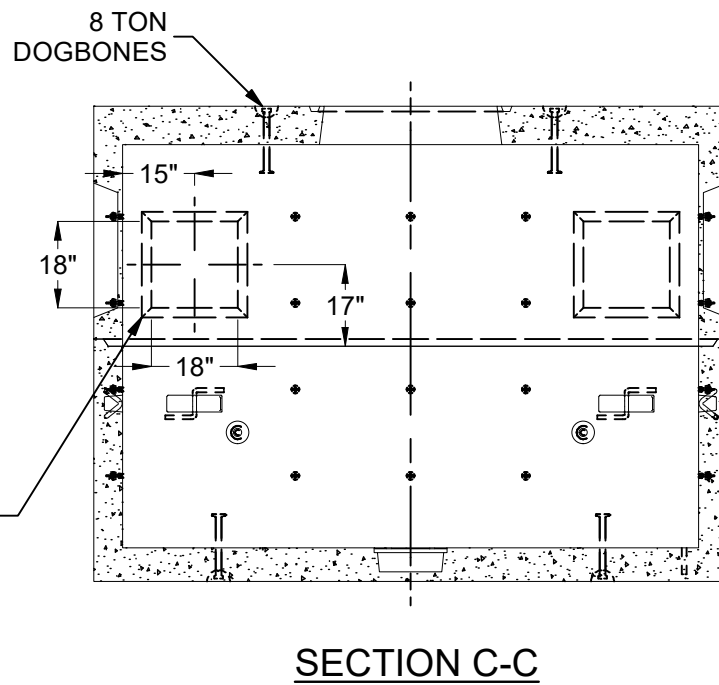
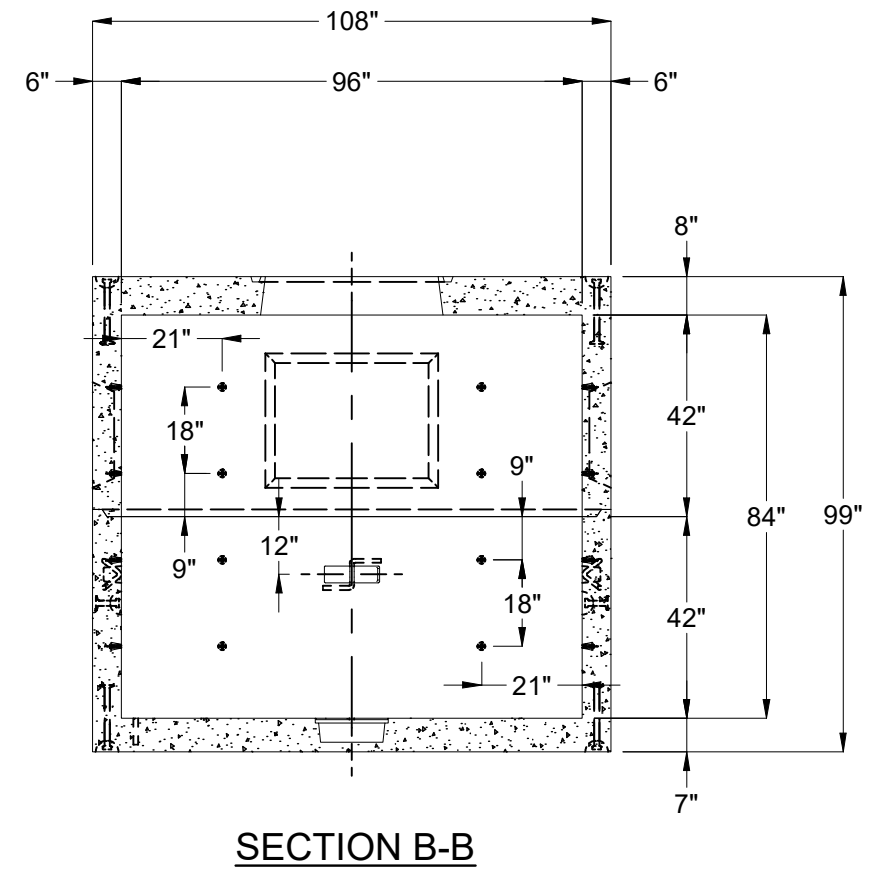
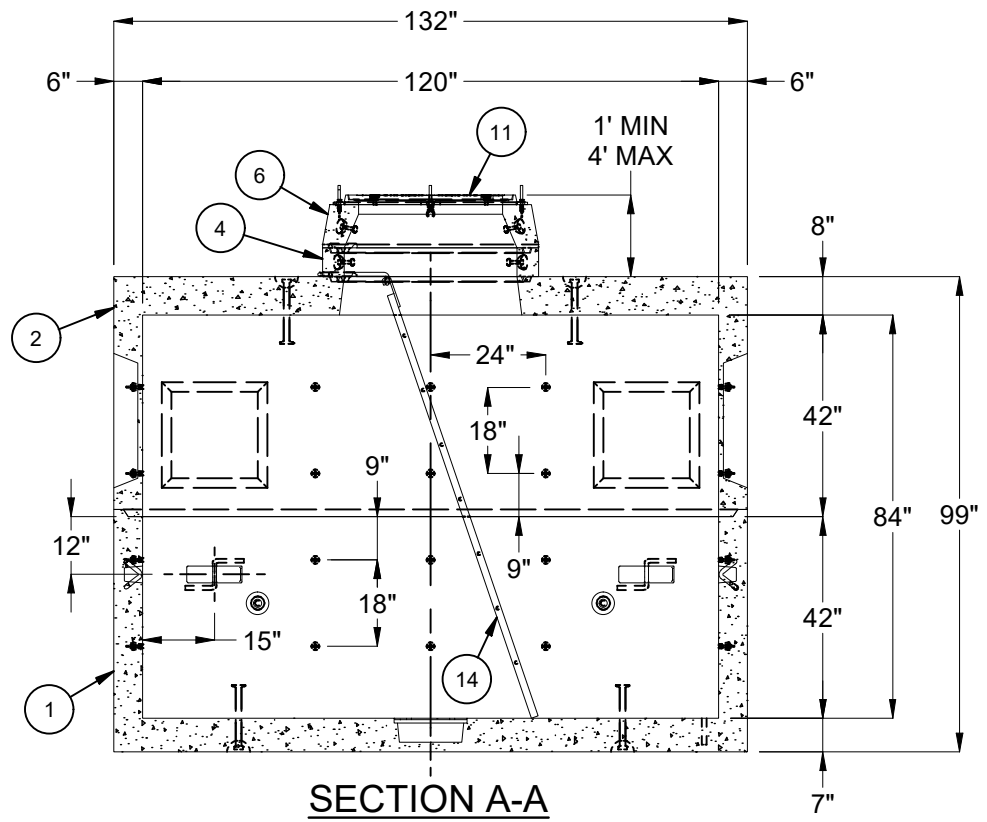
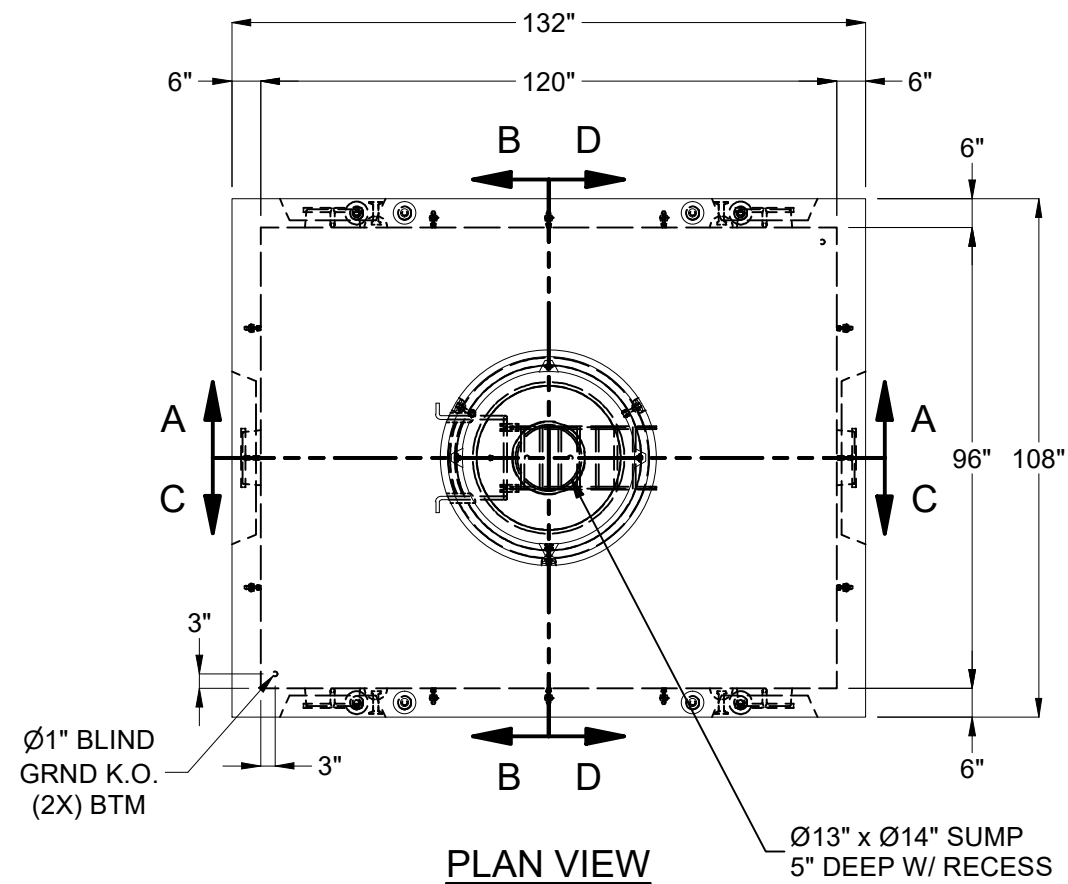
| REV | DESCRIPTION | DATE | APPROVED |
|-----|--------------------------|-----------|----------|
| B-1 | INITIAL RELEASE INVENTOR | 3/14/2024 | |

DESCRIPTION: Vault Layout 96120x84 Knockout Sump 30"C

LAYOUT REVIEW

| | | | |
|--------------|-----------|-----------|-----------|
| PART NUMBER: | 100010597 | DRAWN BY: | J. Prado |
| CREATED: | 8/16/2019 | MODIFIED: | 3/14/2024 |

REV: B-1
SHEET: 1 OF 2



100010597.dwg

| | |
|-----------------|-----------------------|
| BURY DEPTH: | 0.0' - 4.0' to Top |
| WATER LEVEL: | 3.0' |
| DESIGN SPEC: | ACI 318, ASTM C857 |
| AGENCY: | |
| APPROX. WEIGHT: | 37493.33 Lbs |
| LOADING SPEC: | A-16 (AASHTO HS20-44) |
| AGENCY SPEC: | |

JENSEN PRECAST EST. 1968
 WWW.JENSENPRECAST.COM

©2024 Jensen Precast- All rights reserved.
 All materials appearing as Jensen Precast documents and the like are proprietary work product and are protected under U.S. copyright and other laws.
 Unless in conjunction with business conducted with Jensen Precast, any use of Jensen Precast work product without express, written consent is prohibited, and recipient is prohibited from distributing any and all work product to non-approved third parties under penalty of civil action.

| | | | | |
|--------------|--|-----------|-----------|--------|
| DESCRIPTION: | Vault Layout 96120x84 Knockout Sump 30°C | | REV: | B-1 |
| | LAYOUT DRAWING | | | SHEET: |
| PART NUMBER: | 100010597 | DRAWN BY: | J. Prado | 2 OF 2 |
| CREATED: | 8/16/2019 | MODIFIED: | 3/14/2024 | |