

8'-0" x 10'-0" TRANSFORMER PAD W/6'-0" x 8'-0" ENCLOSURE x 3'-6" DEEP

MATERIAL LIST-K810-SB42-N-12

ITEM PART NO.	DESCRIPTION	CAGE NO./LOCATE	WEIGHT/MOUNT
1	SS68-SB42-N-12 42" BOTTOM SECTION	CS-S68-SB42-N-12	9,725 lbs
2	PO96-20-T6-12-68 5" TRANSFORMER PAD	CG-PO96-20-T6-12-68 (208)	4,750 lbs
3	SC3048-PAGV (1) PIECE PARKWAY DIAMOND PLATE COVER GALV AFTER BEAD WELDING "LADWP-E" (1" HT.) (4) 1/2" x 1-1/2" PENTA HEAD BOLTS (NON-CORROSIVE)		129 lbs
4	20-10-413 5" DIA. TERMINATOR WITH MEMBRANE	BOTTOM SECTION	(40) SHELL
5	55-30-52 1/2" P-35-T OPEN BHM INSERT WITH CLEAN-OUT HOLE	TRANSFORMER PAD	(8) FRAME
6	55-10-416 1" GALVANIZED COIL THREAD INSERT	BOTTOM SECTION	(6) CORE
7	55-20-203 2 TON x 3-3/8" GALV. RISERS FOR HANDLING	BOTTOM SECTION TRANSFORMER PAD	(4) SURFACE & CORE (4) TABLE
8	55-21-1092 1-5/8" x 1-1/2" x 12 GIUGE STRUT x 92" LONG	PAD	(4) REOD
9	55-30-20 2" DIA. SCH 40 TERMINATOR FOR GROUND WIRE	BOTTOM SECTION	(8) CORE
10	IS058-GV-12 (1) PIECE PARKWAY DIAMOND PLATE TEMPORARY COVER GALV AFTER BEAD WELDING "LADWP-E" (1" HT.) (4) 1/2" x 1-1/2" PENTA HEAD BOLTS (NON-CORROSIVE)	BOTTOM SECTION OPTIONAL	

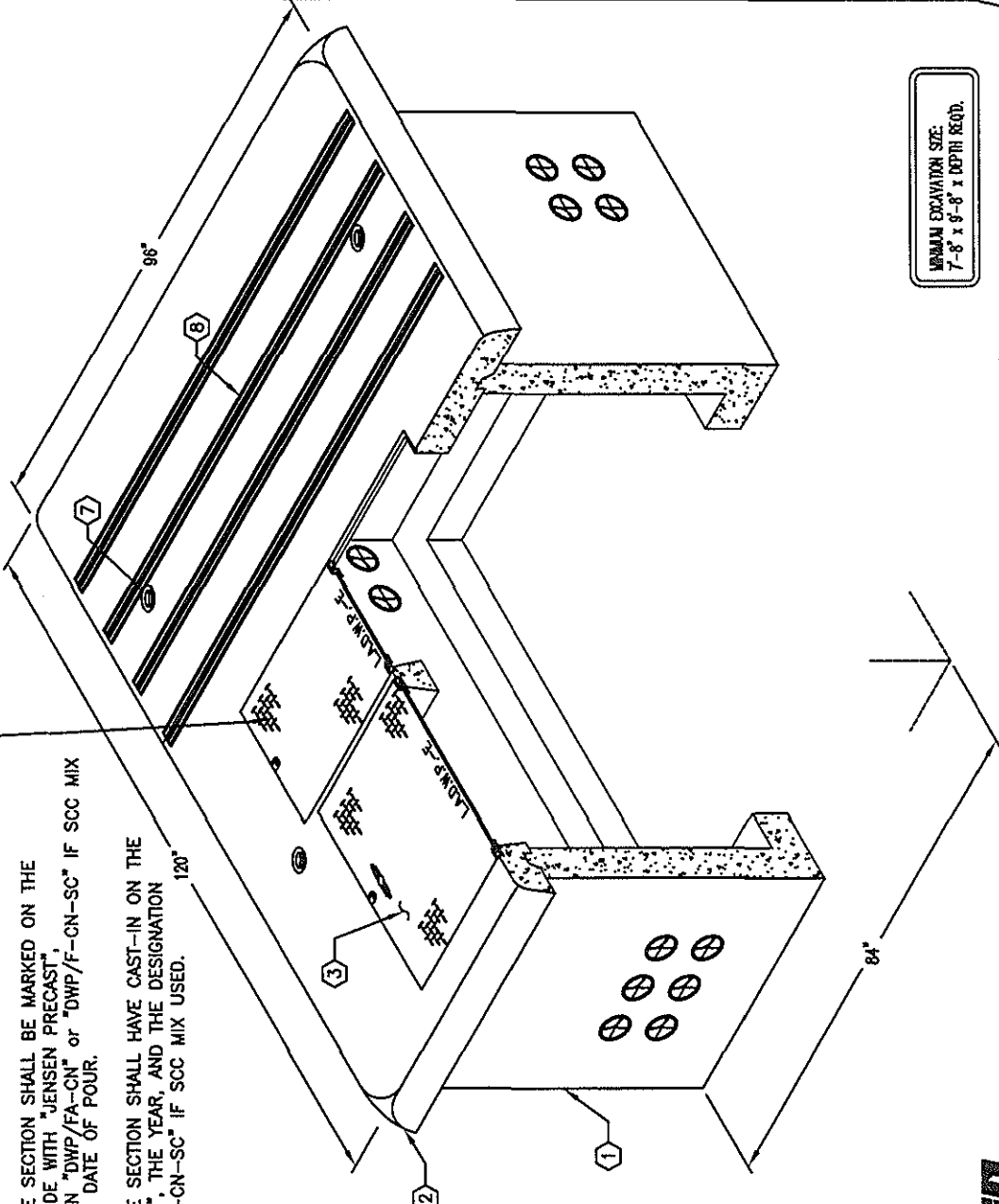
NOTES:

- CONCRETE DESIGNED IN ACCORDANCE WITH L.A.D.W.P. SPEC. P178-R8, ACI 318, AND ASTM C857, USING 5,500 PSI COMPRESSIVE STRENGTH CONCRETE AT 28 DAYS AND 60,000 PSI YIELD STRENGTH ASTM A-706 STEEL REINFORCEMENT PER CALC. #33364 & #33633.
- TRANSFORMER PAD DESIGNED FOR 100 PSF LIVE LOAD AND 1600 PSF DEAD LOAD.
- COVER IS DESIGNED FOR PARKWAY LOADING PER CALCS. #32215.
- VAULT TO BE PLACED ON A MIN. 6" COMPACTED CRUSHED ROCK 1", GRADE A or CONCRETE AGGREGATE #3, GRADE B (SSPWC, SUBSECTIONS 200-1.2 & 200-1.4), INSTALLATION AND EVEN LOAD DISTRIBUTION.
- CONCRETE MIX USED IN POURING THIS PRODUCT SHALL USE FLY ASH AND DCI AS AN ADMIXTURE.
- EACH CONCRETE SECTION SHALL BE MARKED ON THE INSIDE & OUTSIDE WITH "JENSEN PRECAST", THE DESIGNATION "DWP/FA-CN" or "DWP/F-CN-SC" IF SCC MIX USED, AND THE DATE OF POUR.
- EACH CONCRETE SECTION SHALL HAVE CAST-IN ON THE INSIDE "JENSEN", THE YEAR, AND THE DESIGNATION "FA-CN" or "F-CN-SC" IF SCC MIX USED.

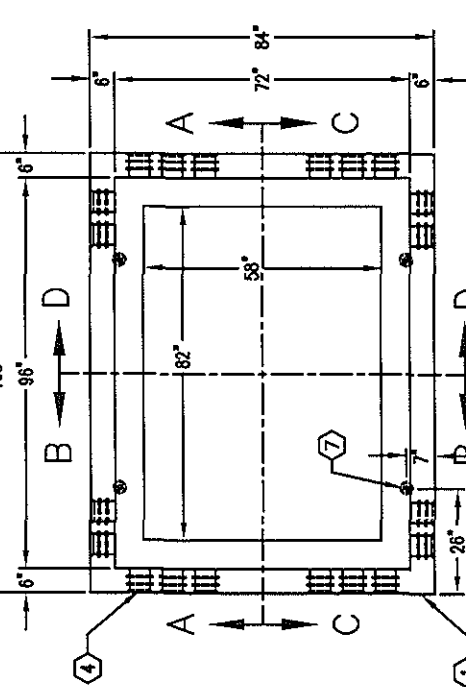
ORDERING INFORMATION:

K810-SB42-N-12 FOR ASSEMBLY AS SHOWN.  
APPROVED FOR L.A.D.W.P. SPEC. UB721-07.  
TOTAL WEIGHT OF ASSEMBLY AS SHOWN IS 12,300 Lbs.

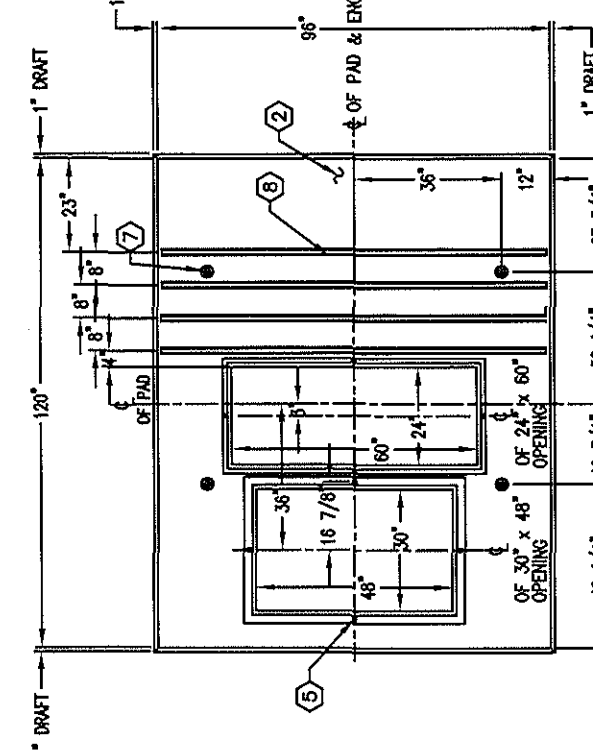
- (10) OPTIONAL 3/16" DIAMOND PLATE COVER TO BE PROVIDED UPON REQUEST WITH NON-CORROSIVE FASTENING DEVICE ON THE CENTER LINE OF EACH SIDE.
- (4) 1/2" NON-CORROSIVE PENTA HEAD BOLTS ON THE CENTER LINE OF EACH SIDE (4 SIDES).



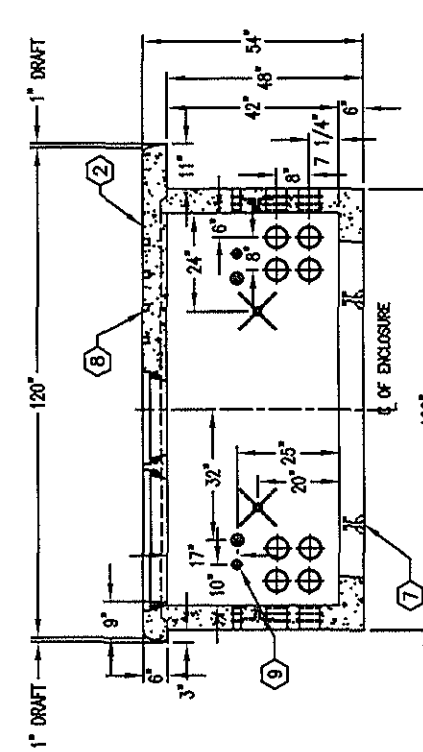
MINIMUM EXCAVATION SIZE:  
7'-8" x 9'-8" x DEPTH RECD.



PLAN VIEW W/O TRANSFORMER PAD

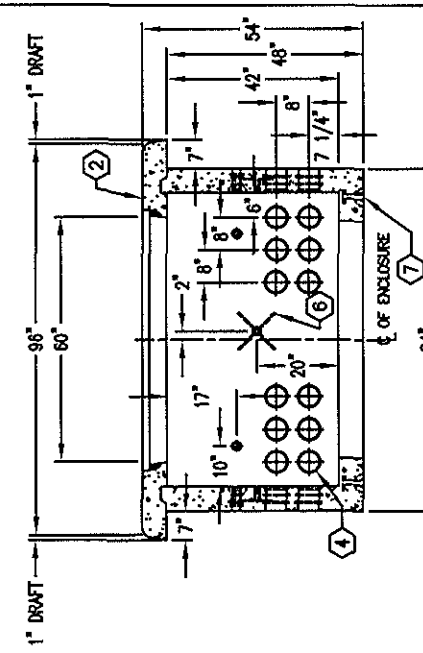


PLAN VIEW OF TRANSFORMER PAD



SECTION A-A

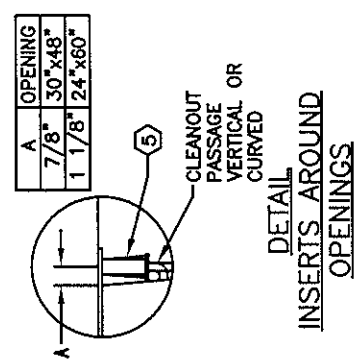
(SECTION C-C IS MIRROR IMAGE)



PLAN VIEW OF TRANSFORMER PAD W/ BOX

SECTION B-B

(SECTION D-D IS MIRROR IMAGE)



DETAIL INSERTS AROUND OPENINGS

#	DATE	DESCRIPTION	BY
A	11-14-14	REV PER LADWP DWG UB721-07 R13	ED
B	12-22-14	NOTE 1 COL INSERT SECTION B-B	GH