

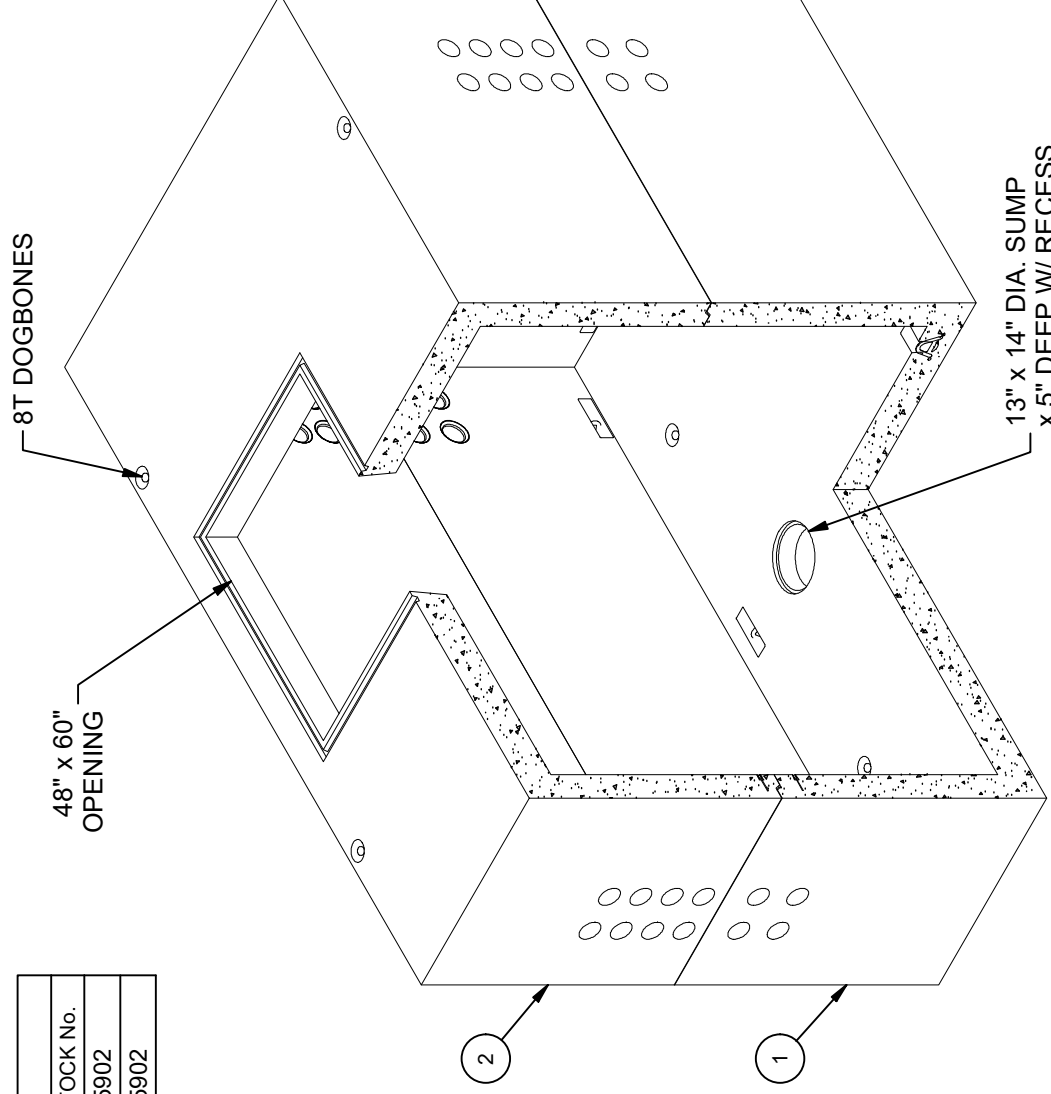
DESIGN NOTES

- DESIGNED IN ACCORDANCE AASHTO HS 20-44 TRAFFIC BRIDGE LOADING, USING 6,000 PSI COMPRESSIVE STRENGTH CONCRETE AND 60,000 PSI YIELD STRENGTH ASTM A-706 STEEL REINFORCEMENT PER CALCS. #34723.
- MINIMUM EXCAVATION SIZE: 10'-2" X 16'-2" X DEPTH REQ'D.
- ALL PARTS TO BE STENCILED: MFG DATE / JOB NUMBER / PRODUCT ID / WEIGHT.
- STRUCTURE(S) TO BE STENCILED, "JENSEN PRECAST", WITH "TIME" AND "DATE OF POUR", AND SDGE STOCK NUMBER ON EXTERIOR AND INTERIOR WALLS.
- VAULT TO BE PLACED ON A MIN. 6" BASE OF CRUSHER RUN FOR EASE OF INSTALLATION AND EVEN LOAD DISTRIBUTION.
- 1/2" THREADED BRASS BONDING INSERT "WELDED TO REBAR" "GND" SHOULD BE STENCILED IN RED LETTERS (1 1/2" MIN. - 2" MAX.)
- EXTERIOR SURFACES OF STRUCTURE(S) SHALL BE COATED WITH IMRAE COATMASTERS 7007.
- FOR COMPLETE DESIGN AND PRODUCT INFORMATION CONTACT JENSEN PRECAST.

CROSS REFERENCE	
JENSEN PART No.	SHORT DESCRIPTION
100012836	3325 BASE SECTION, 4'-9"
100012838	3325 TOP SECTION, 4'-9"
	SDGE STOCK No.
	S475902
	S475902

BILL OF MATERIALS

ITEM	UNIT QTY	QTY	PART NUMBER	DESCRIPTION	MASS (lb)
1	1	1	100012836	Vault 96168x57 Rect. Bottom Section Terminators Sump SDGE 3325	34683
2	1	1	100012838	Vault 96168x57 Rect. Top Section 48"x60"E Terminators SDGE 3325	31425
3	16,000 gal	16,000 gal	100038043	COATING WATERPROOFING CoatMasters CM7007 IMRAE	
4	1,000 ul	1,000 ul	100005749	SEALANT JOINT BUTYL RUBBER ASTM C-990 AND M198 CS-102 1IN EQUIV X14.5FT PER BOX 118FT	



ISOMETRIC VIEW

LIFTING NOTES

- FIELD INSTALLATION: PLANT DEMOLING: MINIMUM HANDLING CONCRETE STRENGTH F_c = 5,500 PSI RIGGING EQUALIZER REQUIRED TO EQUALIZE LOAD TO 4 LIFTING POINTS WITH A SLING ANGLE BETWEEN 60° AND 90°

BURY DEPTH:	0.0' - 4.0' to Top
WATER LEVEL:	3.0'
DESIGN SPEC:	ASTM C857, ACI 318
AGENCY:	SDGE
APPROX. WEIGHT:	66108.18 Lbs
LOADING SPEC:	A-16 (AASHTO HS20-44)
AGENCY SPEC:	3325

©2023 Jensen Precast. All rights reserved. All materials appearing as Jensen Precast documents and the like are proprietary work product and are protected under U.S. copyright and other laws. Unless in conjunction with business conducted with Jensen Precast, any use of Jensen Precast work product without express, written consent is prohibited, and recipient is prohibited from distributing any and all work product to non-approved third parties under penalty of civil action.

REVISION HISTORY		REVISION HISTORY	DATE	APPROVED
REV	DESCRIPTION	DESCRIPTION	DATE	APPROVED
C	ADDED NOTE & DETAIL E - WELD GND INSERT TO REBAR		5/26/2023	

DESCRIPTION: Utility Vault 96168 Layout Assembly SDGE 3325

REV: C-1

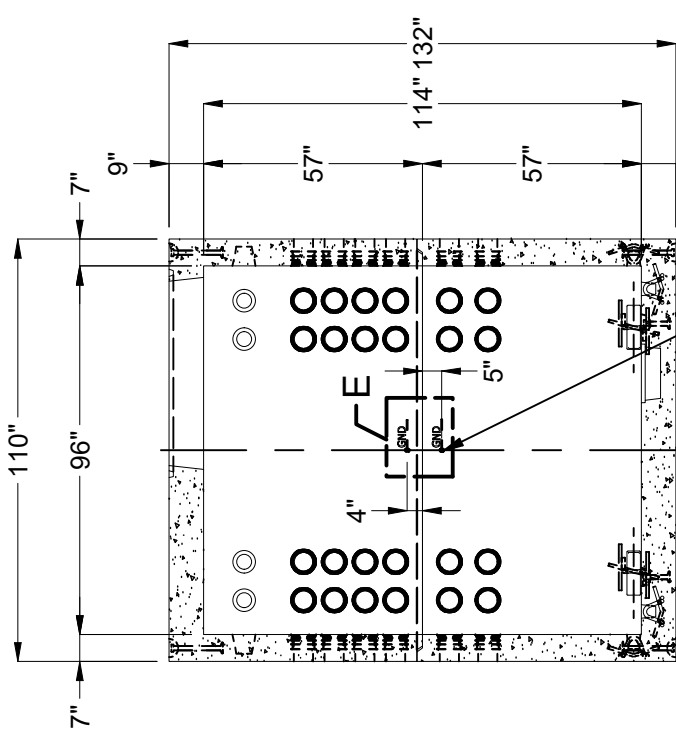
PART NUMBER: 100010609 LAYOUT REVIEW

DRAWN BY: J. Prado

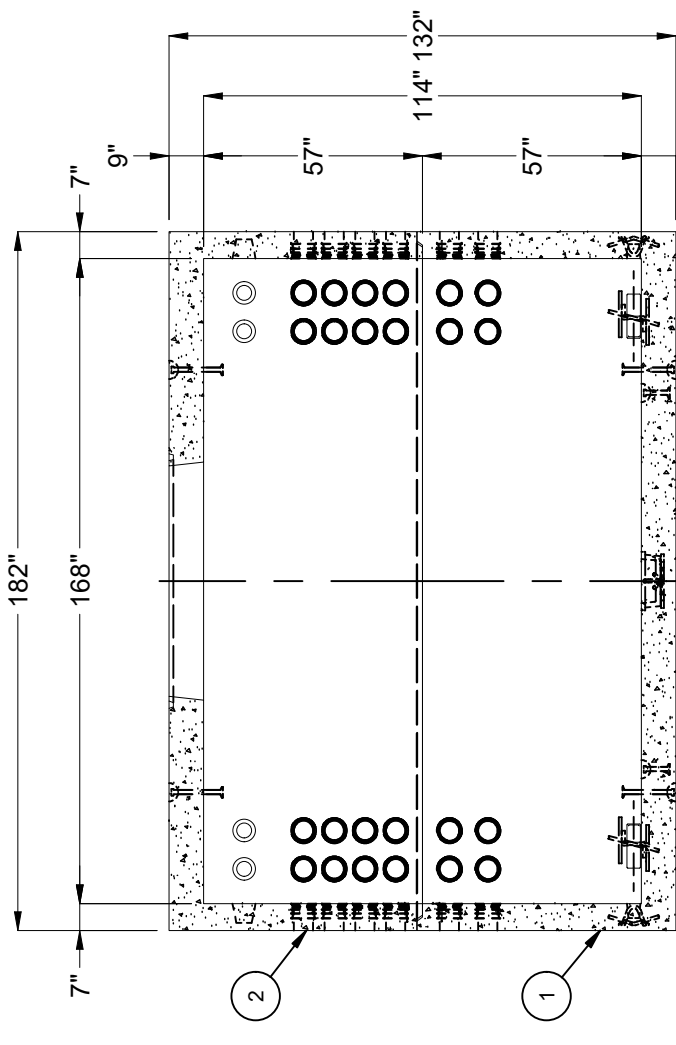
CREATED: 7/17/2019 MODIFIED: 5/26/2023

SHEET: 47

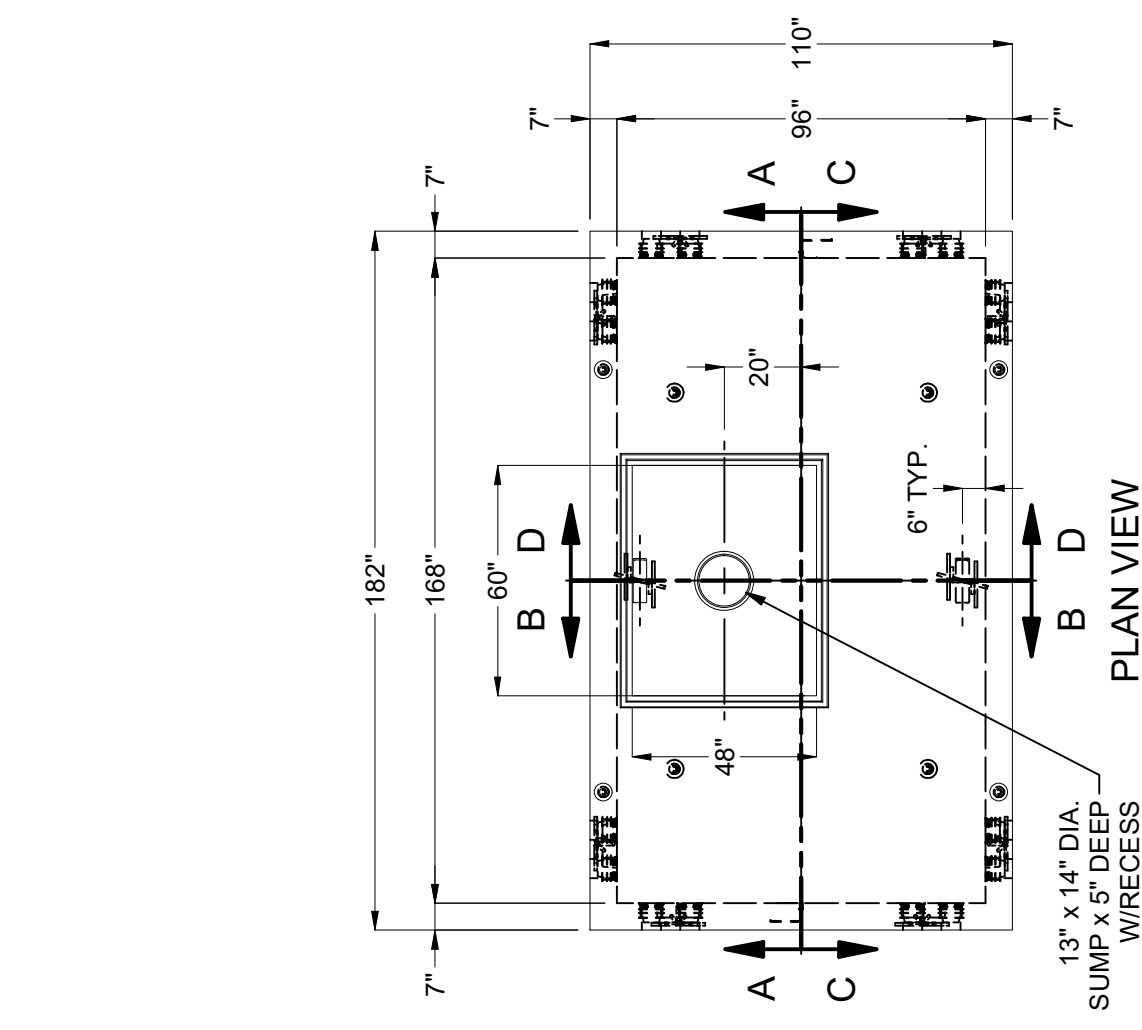
1 OF 2



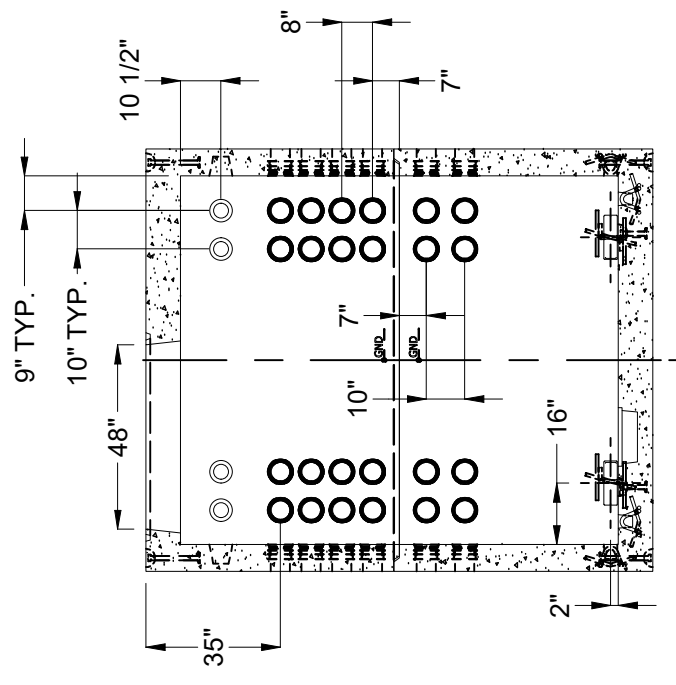
SECTION B-B



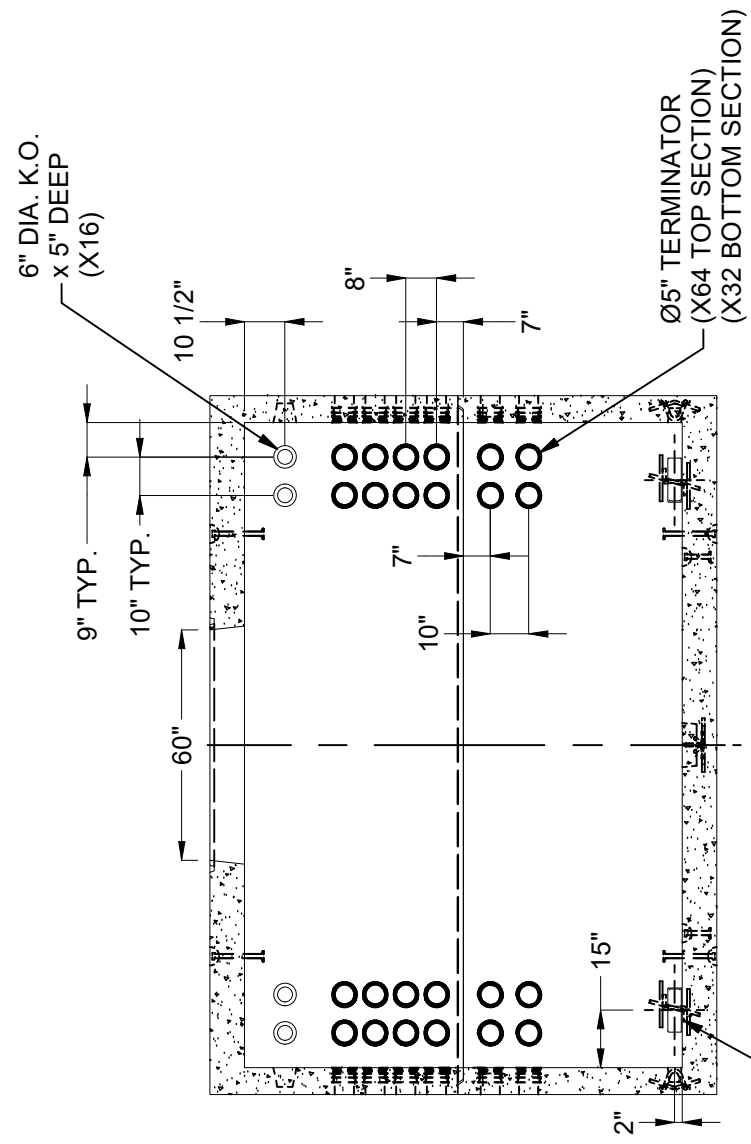
SECTION A-A



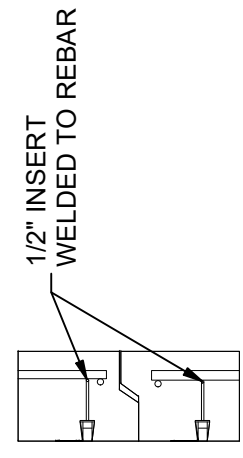
PLAN VIEW



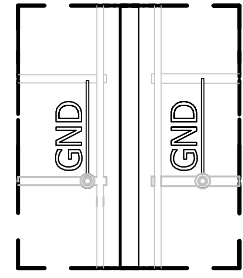
SECTION D-D



SECTION C-C



7/8" DIA. x 4-1/2" PULL IRON W/ LEGS, GALV.



DETAIL E

BURY DEPTH: 0.0' - 4.0' to Top WATER LEVEL: 3.0' DESIGN SPEC: ASTM C857, ACI 318 AGENCY: SDGE	APPROX. WEIGHT: 66108.18 Lbs LOADING SPEC: A-16 (AASHTO HS20-44) AGENCY SPEC: 3325	DESCRIPTION: Utility Vault 96168 Layout Assembly SDGE 3325 LAYOUT DRAWING PART NUMBER: 100010609 DRAWN BY: J. Prado CREATED: 7/17/2019 MODIFIED: 5/26/2023	REV: C-1
			SHEET: 48 2 OF 2

©2023 Jensen Precast. All rights reserved. All materials appearing as Jensen Precast documents and the like are proprietary work product and are protected under U.S. copyright and other laws. Unless in conjunction with business conducted with Jensen Precast, any use of Jensen Precast work product without express, written consent is prohibited, and recipient is prohibited from distributing any and all work product to non-approved third parties under penalty of civil action.


 EST. 1968
 WWW.JENSENPRECAST.COM