

LIFTING NOTES

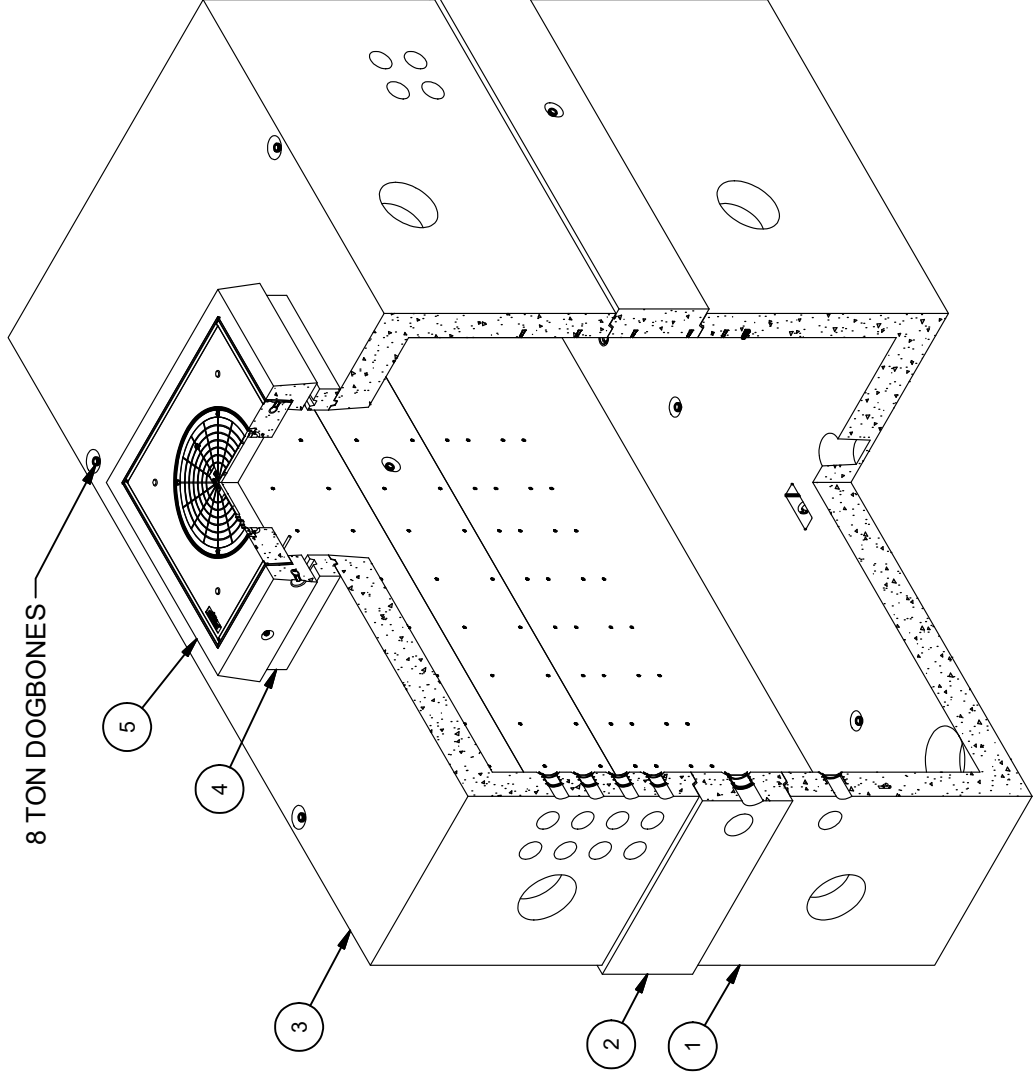
FIELD INSTALLATION: PLANT DEMOLDING: MINIMUM HANDLING CONCRETE STRENGTH  $F_c = 5500$  PSI RIGGING EQUALIZER REQUIRED TO EQUALIZE LOAD TO 4 LIFTING POINTS WITH A SLING ANGLE BETWEEN  $60^\circ$  AND  $90^\circ$

BILL OF MATERIALS

ITEM	UNIT QTY	QTY	PART NUMBER	DESCRIPTION	MASS (lb)
1	1	1	100009755	Vault 96192x57 Rect. Bottom Section Knockout, Terminators Sump LADWP H-202 G-2/G-3	46652
2	1	1	100009757	Riser 96192x26 Terminators LADWP H-202 G3	12824
3	1	1	100009742	Vault 96192x57 Rect. Top Section 48"x48"C Knockout, Terminators LADWP H-202 G-2/G-3	42339
4	1	1	100012395	Riser 4848x6 LADWP 1-802 G-1B	792
5	1	1	200060771	Vault Neck and Plug Cover Assembly 4848x12 30"C LADWP 1-802 G-1B R-1581	3325
6	1	1	100007585	LADDER HANGER ASSEMBLY GALV	
7	1	1	100009256	LADDER HOOKED GALV 14FT ED/LA I3382	
8	1	4	100009239	ROD THREADED COIL YELLOW DIP 3/4 X 10-1/2"	
9	1	8	100007010	HEX COIL NUT 3/4-4.5 ZINC - PLATED	
10	1	8	100007136	WASHER FLAT 3/4 REGULAR TYPE A ZINC	
11	1	14	100006057	STRUT SLOTTED C-CHANNEL 1-5/8 X 1-5/8 12GA BOLT-ON GALV 12IN	
12	1	2	100006062	STRUT SLOTTED C-CHANNEL 1-5/8 X 1-5/8 12GA BOLT-ON GALV 18IN	
13	1	1	100008136	STRUT SLOTTED C-CHANNEL 1-5/8 X 1-5/8 12GA BOLT-ON GALV 48IN	
14	1	13	100006058	STRUT SLOTTED C-CHANNEL 1-5/8 X 1-5/8 12GA BOLT-ON GALV 132IN	
15	1	153	100008101	SCREW BUTT HEAD CAP 1/2-12 2 304SS	
16	1	153	100007135	WASHER FLAT 1/2 TYPE A 304SS	
17	1,000 ul	1,000 ul	100005749	SEALANT JOINT BUTYL RUBBER ASTM C-990 AND M198 CS-102 1IN EQUIV X14.5FT PER BOX 118FT	

NOTES:

- STANDARDS. AASHTO LRFD BRIDGE DESIGN SPECIFICATIONS, 8TH EDITION, WITH 2022 CALTRANS AMENDMENTS, CITY OF LOS ANGELES BUREAU OF ENGINEERING STANDARD PLAN S-601, LATEST, MANUAL PART H, LADWP P 178, ASTM C-857. STRUCTURAL CALCS FOR BOX: #33468.
- MATERIAL. CONCRETE;  $F_c=5,500$  PSI. MIX TO INCLUDE FLY ASH AND DCI. REINFORCEMENT PER ASTM A-706 OR A-615,  $F_y=60,000$ .
- LOADS. VERTICAL LIVE LOAD: AASHTO HL-93, INCLUDING GREATER OF HS-20 TRUCK OR TANDEM. LIVE LOAD SURCHARGE: PER LA BOE PART H, FIGURE H 374.2A. MINIMUM 80 PSF (TO BOTTOM OF VAULT) OR LADWP P 178 (104 PSF). SOIL LATERAL LOADS: 40 PCF (DRY), 81 PCF (SATURATED), SATURATED SOIL CONDITIONS 3'-0" BELOW GRADE. SOIL BEARING CAPACITY = 1,500 PSF. DESIGN SOIL DENSITY IS 120 PCF.
- LOADS NOT INCLUDED. DESIGN DOES NOT INCLUDE COOPER E-80 RAILROAD LOADS OR LATERAL OR SURCHARGE LOADS THAT ARE PRODUCED BY FOOTING OR FOUNDATIONS ADJACENT TO THE STRUCTURE. THIS SUBSTRUCTURE SHALL BE KEPT AT LEAST IN A 1:1 RATIO AWAY FROM ALL FOOTINGS AND FOUNDATIONS, UNLESS THE ENGINEER OF RECORD APPROVES IN WRITING.
- INSTALLATION. VAULT TO BE PLACED ON WELL COMPACTED SOIL WITH MIN. 6" DEPTH OF TAMPED CRUSHED AGGREGATE BASE FOR EASE OF INSTALLATION AND EVEN LOAD DISTRIBUTION USING A VIBRATORY PLATE COMPACTOR IN A MIN. OF TWO PASSES. BASE TO EXTEND 12" BEYOND THE STRUCTURE. BASE MATERIAL IN ACCORDANCE WITH SECTION 200-2.2 OF THE SSPWC (GREEN BOOK) PER LADWP SPECIFICATION NO. 104.
- INSTALLATION LIMITS. VAULT SHALL HAVE A MINIMUM COVER 1'-6" AND A MAXIMUM COVER OF 4'-0".
- EACH CONCRETE SECTION SHALL BE MARKED ON THE INSIDE & OUTSIDE WITH "JENSEN PRECAST", THE DESIGNATION "DWI/FA-CN", AND THE DATE OF THE POUR.
- EACH CONCRETE SECTION SHALL HAVE CAST-IN ON THE INSIDE "JENSEN", THE YEAR, AND THE DESIGNATION "FA-CN".
- EACH PIECE TO BE STENCILLED WITH ITS PART NO.
- NO SHARP OR ROUGH EDGES ON THE TERMINATORS ENTERING THE VAULT.
- CITY OF LA APPROVED 4' X 4' VAULT NECK AND COVER, WITH APPROVED CAST IRON COVER TO BE USED WITH THIS VAULT.
- MINIMUM EXCAVATION SIZE: 10'-7" X 18'-7" X DEPTH REQ'D.
- ADDITIONAL SUBMITTAL, PERMIT AND CONSTRUCTION PLAN REVIEW WILL BE REQUIRED FOR EACH PROJECT LOCATION. SUBMIT TO CITY ENGINEERS FOR APPROVAL PRIOR TO START OF ANY CONSTRUCTION.
- ALL INSTALLATIONS SHALL COMPLY WITH ALL OTHER LOCAL GOVERNING CODES AND REGULATION INCLUDING CALIFORNIA PUBLIC UTILITIES COMMISSION REGULATIONS.



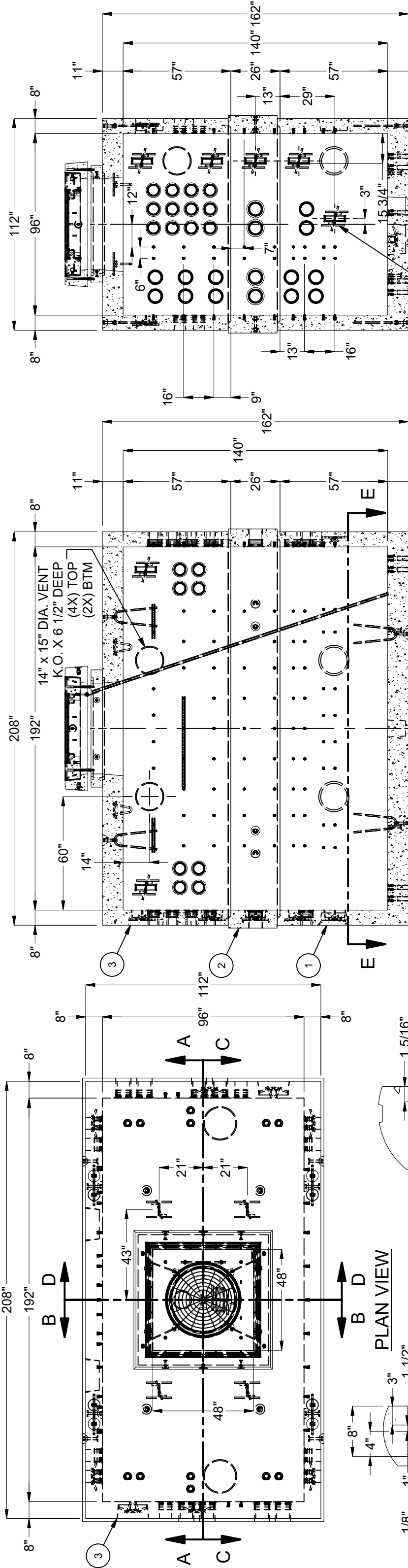
ISO VIEW

REVISION HISTORY	
REV	DESCRIPTION
B-1	INITIAL RELEASE INVENTOR
	DATE 8/29/2023
	APPROVED

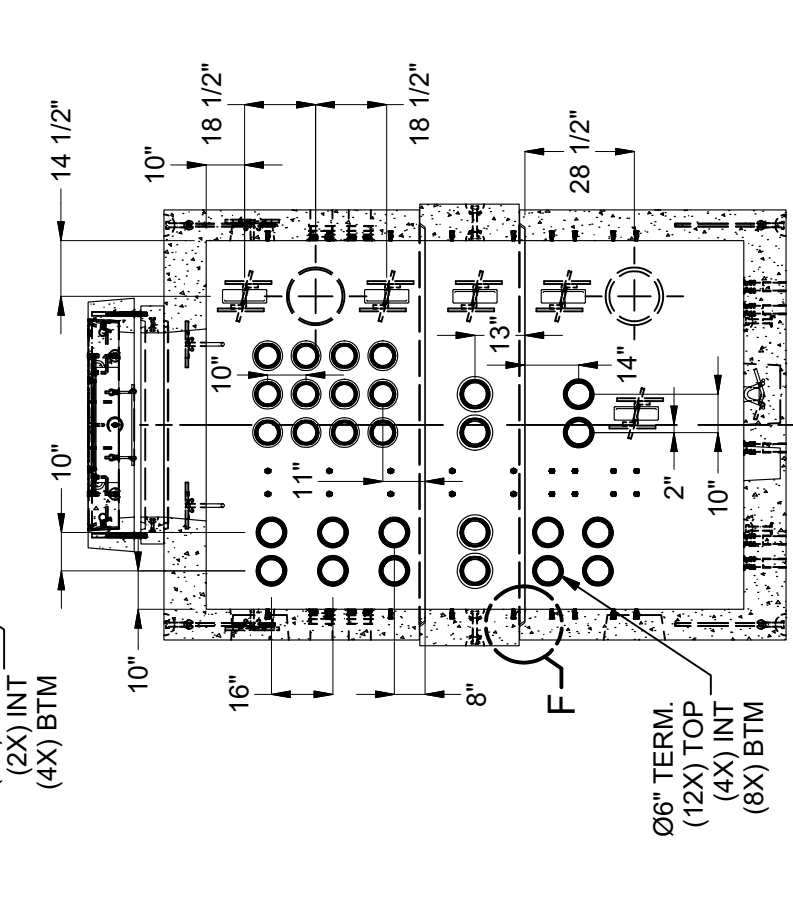
DESCRIPTION:	Vault Layout 96192x140 Sump 48"x48"C LADWP H-202 G-3 R22
REV:	B-1
PART NUMBER:	100010621
CREATED:	2/2/2023
LAYOUT REVIEW	J. Prado
DRAWN BY:	J. Prado
MODIFIED:	8/29/2023
SHEET:	1 OF 2

©2023 Jensen Precast. All rights reserved. All materials appearing as Jensen Precast documents and the like are proprietary work product and are protected under U.S. copyright and other laws. Unless in conjunction with business conducted with Jensen Precast, any use of Jensen Precast work product without express, written consent is prohibited, and recipient is prohibited from distributing any and all work product to non-approved third parties under penalty of civil action.

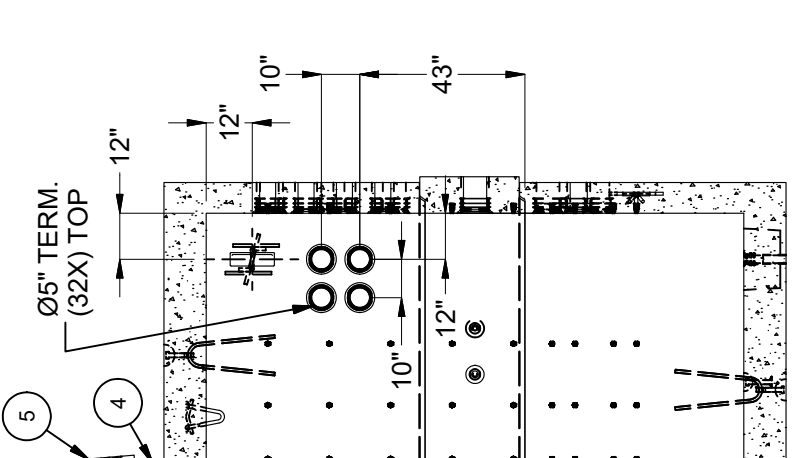
BURY DEPTH:	1.5' - 4.0' to Top
WATER LEVEL:	3.0'
APPROX. WEIGHT:	105332.11 Lbs
DESIGN SPEC:	AASHTO LRFD/ACT 318, ASTM C857
LOADING SPEC:	AASHTO HL-93
AGENCY SPEC:	LADWP
	H-202 G-3 R22



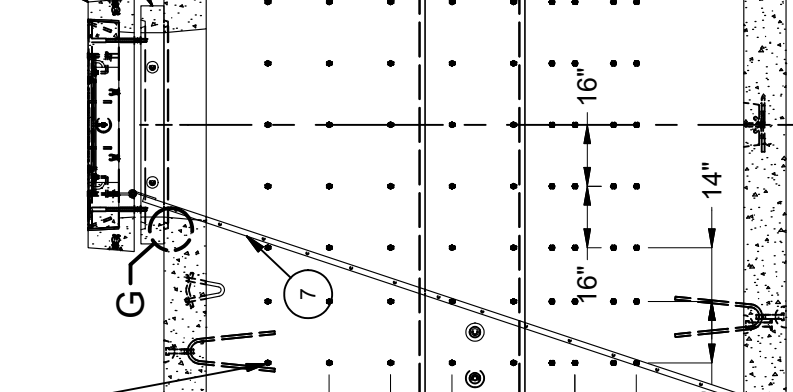
**SECTION A-A**



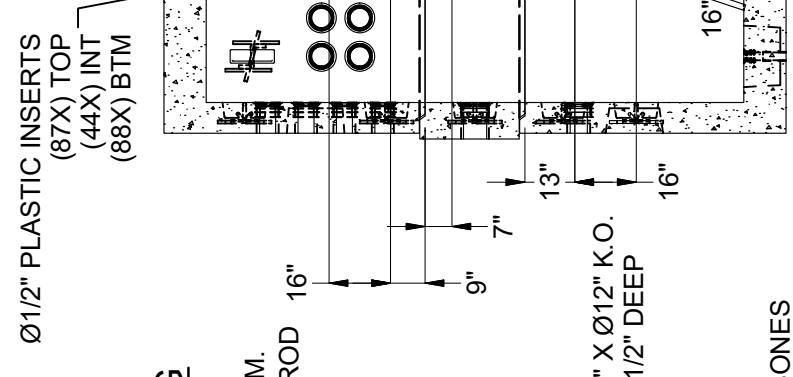
**SECTION B-B**



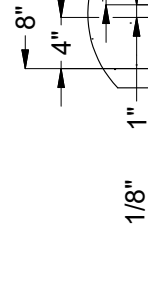
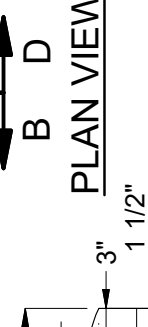
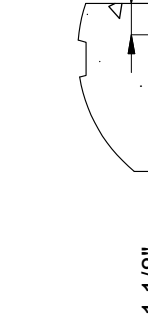
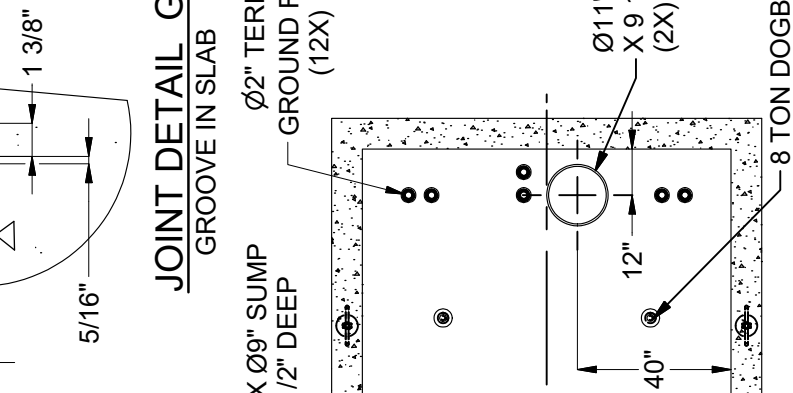
**SECTION C-C**



**SECTION D-D**



**SECTION E-E**  
(BOTTOM SECTION)



<b>BURY DEPTH:</b> 1.5' - 4.0' to Top <b>WATER LEVEL:</b> 3.0' <b>DESIGN SPEC:</b> AASHTO LRFD/ACT 318, ASTM C857 <b>AGENCY:</b> LADWP	<b>APPROX. WEIGHT:</b> 105332.11 Lbs <b>LOADING SPEC:</b> AASHTO HL-93 <b>AGENCY SPEC:</b> H-202 G-3 R22	 <b>WWW.JENSENPRECAST.COM</b>	<b>DESCRIPTION:</b> Vault Layout 96192x140 Sump 48"x48" C LADWP H-202 G-3 R22 <small>©2023 Jensen Precast. All rights reserved. All materials appearing as Jensen Precast documents and the like are proprietary work product and are protected under U.S. copyright and other laws. Unless in conjunction with business conducted with Jensen Precast, any use of Jensen Precast work product without express, written consent is prohibited, and recipient is prohibited from distributing any and all work product to non-approved third parties under penalty of civil action.</small>	<b>REV:</b> B-13
				<b>LAYOUT DRAWING</b>
<b>PART NUMBER:</b> 100010621 <b>CREATED:</b> 2/2/2023		<b>DRAWN BY:</b> J. Prado <b>MODIFIED:</b> 8/29/2023	<b>2 OF 2</b>	<b>2 OF 2</b>