

# 8' x 16' x 7' VAULT (202)

MODEL K816X-FV84-12

L.A.D.W.P. SPEC.  
H-202 G1

NOTES:  
STRUCTURE DESIGNED IN ACCORDANCE WITH:

AASHTO H-20 TRAFFIC BRIDGE LOADING

ASTM C-857 STANDARD PRACTICE FOR MINIMUM STRUCTURAL DESIGN LOADING FOR UNDERGROUND PRECAST CONCRETE UTILITY STRUCTURES

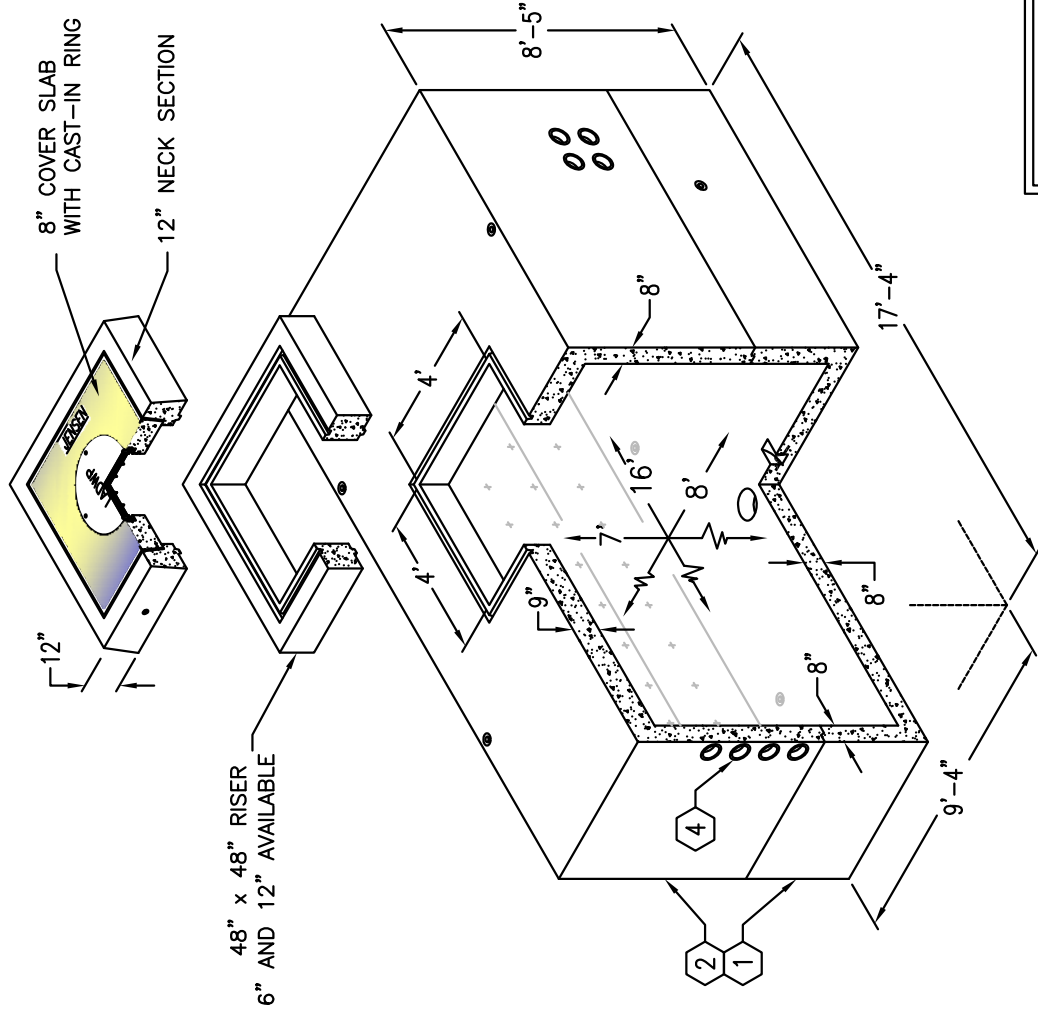
AMERICAN CONCRETE INSTITUTE ACI 318-05

CONCRETE COMPRESSIVE STRENGTH  $F'_c = 5500$  PSI

REINFORCEMENT IN ACCORDANCE WITH ASTM A-706 WITH A YIELD STRENGTH OF  $F_y = 60,000$  PSI.

6" MINIMUM COMPACTED GRANULAR MATERIAL RECOMMENDED FOR SUB-BASE FOR EASE OF INSTALLATION AND EVEN LOAD DISTRIBUTION.

1. UV816X-B27-12, 27" BOTTOM SECTION, WT. 27,600 lbs.
2. UV816X-T57-12-12202, 57" TOP SECTION, WT. 40,475 lbs.
3. 8" x 9" DIA. SUMP x 6" DEEP.
4. 5" DIA. TERMINATOR, TOP SECTION (32);
5. 6" DIA. TERMINATOR, TOP SECTION (12);
6. BOTTOM SECTION (4);
7. 14" x 15" DIA. VENT KNOCKOUT x 6 1/2" DEEP.
8. 7/8" DIA. GALV. FLUSH PULL IRON.
9. 12" DIA. RECESS.
10. 1 1/2" PLASTIC INSERTS BOLT ON FOR BOLT ON UNISTRUT.
11. 2" DIA. TERM FOR GROUND ROD BOTTOM SECTION.
12. 7/8" STAINLESS STEEL PULL IRON (4) TOP CEILING.

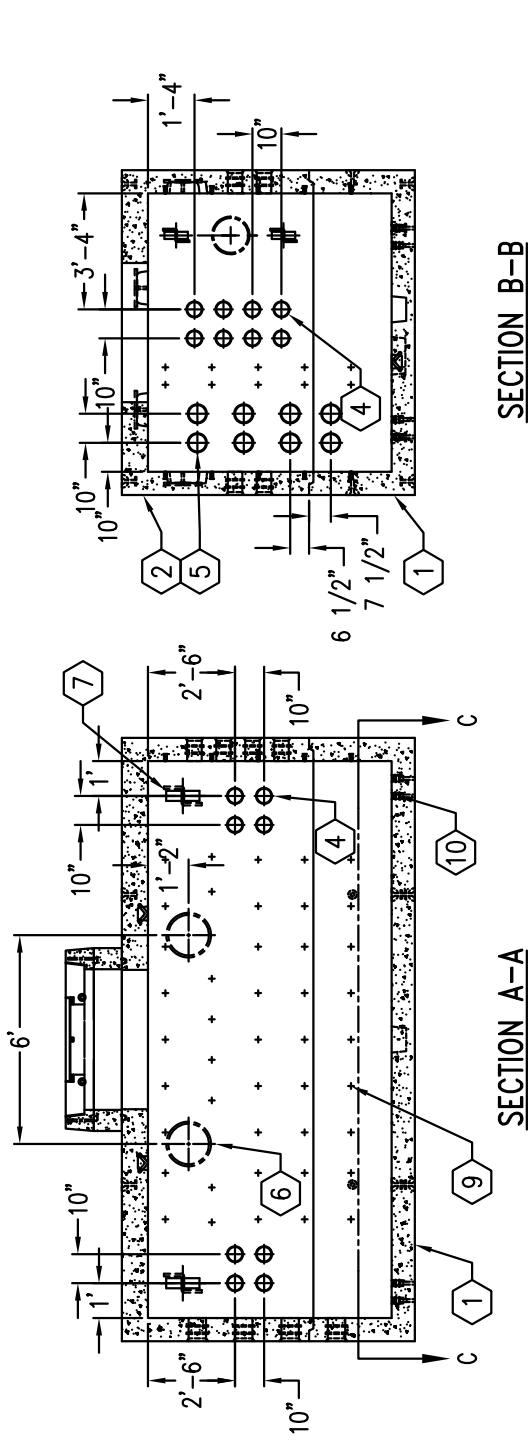


MINIMUM EXCAVATION SIZE:  
10'-1" x 18'-1" x REQ'D DEPTH

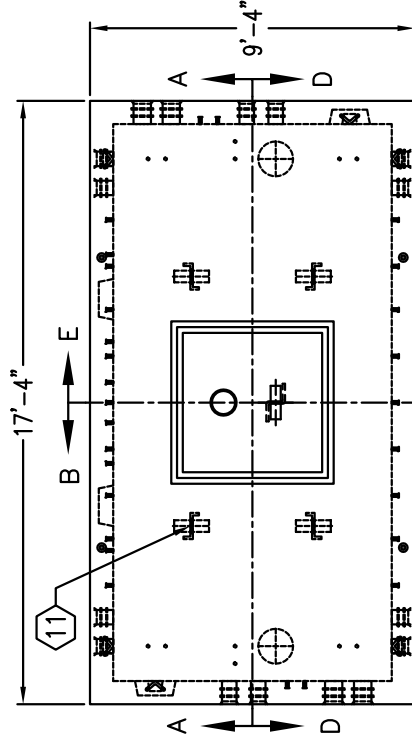
# 8' x 16' x 7' VAULT (202)

MODEL K816X-FV84-12

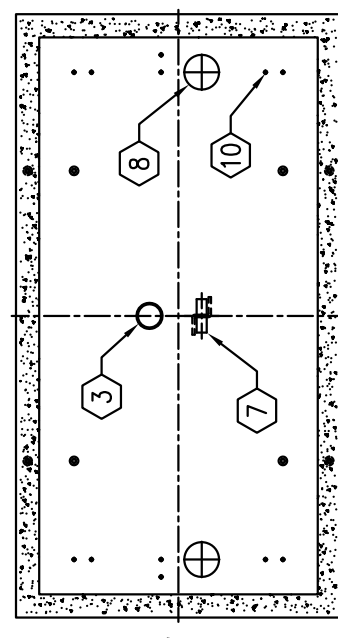
L.A.D.W.P. SPEC.  
H-202 G1



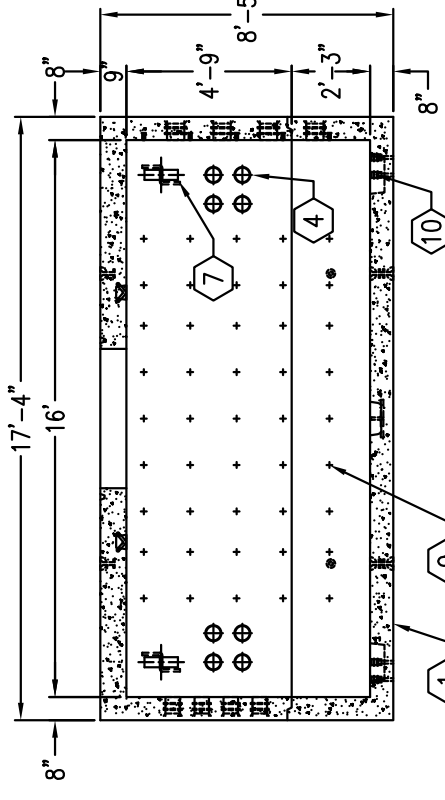
SECTION A-A



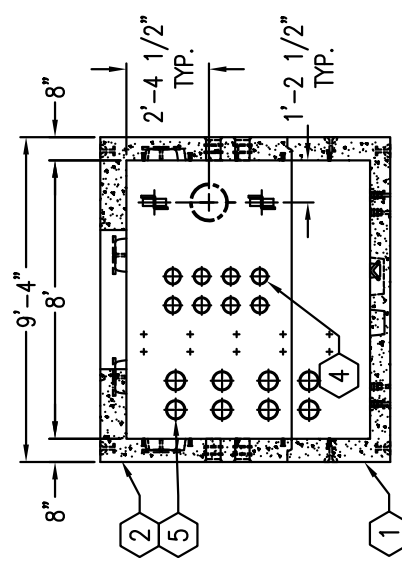
PLAN VIEW



SECTION B-B



SECTION D-D



SECTION C-C

SECTION E-E