

8'-6" x 10'-0" TRANSFORMER PAD W/6'-0" x 8'-0" VAULT x 48" DEEP

MATERIAL LIST - K8610-SB68-12

ITEM PART NO.	DESCRIPTION	CAGE NO./LOCATE	WEIGHT/MOUNT
1 SB68-L49-12	6'-0" x 8'-0" x 49" LOWER SECTION	CG-SB68-L49-12-LA	11,690 lbs
2 PD102120-T8-12	8'-6" x 10'-0" TRANSFORMER PAD 8" THICK	CG-PD102120-T8-12-LA	6,910 lbs
3 SC3048-PAGV-12	(1) PIECE GALV. SOLID COVER NAME PLATE "LADWP" W/4-1/2" x 1-1/2" S.S.P.H. BOLTS (2) GALV. DROP HANDLES		139 lbs.
4 55-10-416	1/2" DIA. P35T OPEN BTM INSERT W/ CLEAN OUT HOLE	TRANSFORMER PAD	(4) TABLE
5 55-30-52	5" DIAMETER TERMS	BOTTOM SECTION	(48) CORE
6 55-10-630	3/4" DIAMETER NC THREADED INSERT P-56T	PAD	(6) BOTTOM SIDE
7 55-10-850	1" x 5-1/2" GALVANIZED COIL INSERTS	BOTTOM SECTION	(6) CORE MTD.
8 55-30-20	2" DIA. TERMINATOR	BOTTOM SECTION	(8) SHELL MTD.
9 55-21-98	1 5/8" x 1 5/8" GALV. UNISTRUT CAST-IN x 98" LONG	TRANSFORMER PAD	(5) TABLE
10	L 8" x 8" x 1/2" GALV. STEEL ANGLE PER DETAIL "A"	(2) LOOSE	(12) LOOSE
11	3/4" FLAT WASHER, 316 SS; 3/4" COIL LOCK WASHER, 316 SS; 3/4"-10 NC x 3" HEX BOLT, 316 SS;	(4) CORE	(4) SURFACE
12	4 TON x 4-3/4" GALVANIZED RISS HANDLING	TRANSFORMER PAD	(4) TABLE
13	2 TON x 5-1/2" GALVANIZED RISS HANDLING	TRANSFORMER PAD	(4) SURFACE

NOTES:

- STANDARDS, AASHTO LRFD BRIDGE DESIGN SPECIFICATIONS, 4TH EDITION, WITH 2010 CALTRANS AMENDMENTS, CITY OF LOS ANGELES BUREAU OF ENGINEERING STANDARD PLAN S-601, LATEST, MANUAL PART H, LADWP STD. UB721-34 AND SPEC. P-178, ASTM C-857, VAULT STRUCTURAL CALCS. #33633. COVER STRUCTURAL CALCS #33640.
- MATERIAL, CONCRETE, F_c=5,500 PSI. MIX TO INCLUDE FLY ASH AND DCL. REINFORCEMENT PER ASTM A-706, F_y=60,000.
- LOADS, VERTICAL LIVE LOAD: PER LADWP UB721-34: 1600 PSF DEAD LOAD FOR TRANSFORMER AREA; 100 PSF LIVE LOAD ELSEWHERE. LIVE LOAD SURCHARGE: PER LADWP SPEC P-178 3.C. (40 psf)/(2 ft)(1.3) = 104 psf. SOIL LATERAL LOADS: 40 PCF (DRY), 81 PCF (SATURATED), SATURATED SOIL CONDITIONS 3'-0" BELOW GRADE. SOIL BEARING CAPACITY = 1500 PSF. DESIGN SOIL DENSITY IS 120 PCF.
- LOADS NOT INCLUDED. DESIGN DOES NOT INCLUDE COOPER E-80 RAIL-ROAD LOADS OR LATERAL OR SURCHARGE LOADS THAT ARE PRODUCED BY FOOTING OR FOUNDATIONS ADJACENT TO THE STRUCTURE. THIS SUBSTRUCTURE SHALL BE KEPT AT LEAST IN A 1:1 RATIO AWAY FROM ALL FOOTINGS AND FOUNDATIONS, UNLESS THE ENGINEER OF RECORD APPROVES IN WRITING.
- INSTALLATION, VAULT TO BE PLACED ON A MIN. 6" BASE OF CRUSHER RUN FOR EASE OF INSTALLATION AND EVEN LOAD DISTRIBUTION. BASE MATERIAL IN ACCORDANCE WITH SECTION 200-2 OF THE SSPWC (GREEN BOOK).
- INSTALLATION LIMITS. BOTTOM OF PAD/TOP OF VAULT IS APPROXIMATELY AT GRADE.
- EACH CONCRETE SECTION SHALL BE MARKED ON THE INSIDE & OUTSIDE WITH "JENSEN PRECAST", THE DESIGNATION "DWP/FA-CN", AND THE DATE OF THE POUR.
- EACH CONCRETE SECTION SHALL HAVE CAST-IN ON THE INSIDE "JENSEN", THE YEAR, AND THE DESIGNATION "FA-CN".
- NO SHARP OR ROUGH EDGES ON THE TERMINATORS ENTERING THE VAULT.
- EACH PIECE TO BE STENCILED WITH PART NO. PAD TO BE MARKED "PD102120-T8-12". VAULT SECTION TO BE MARKED "SB68-L48-12"

ADDITIONAL SUBMITTAL, PERMIT AND CONSTRUCTION PLAN REVIEW WILL BE REQUIRED FOR EACH PROJECT LOCATION. SUBMIT TO CITY ENGINEER FOR APPROVAL PRIOR TO START OF ANY CONSTRUCTION.

ALL INSTALLATIONS SHALL COMPLY WITH ALL OTHER LOCAL GOVERNING CODES AND REGULATIONS INCLUDING CALIFORNIA PUBLIC UTILITIES COMMISSION REGULATIONS.

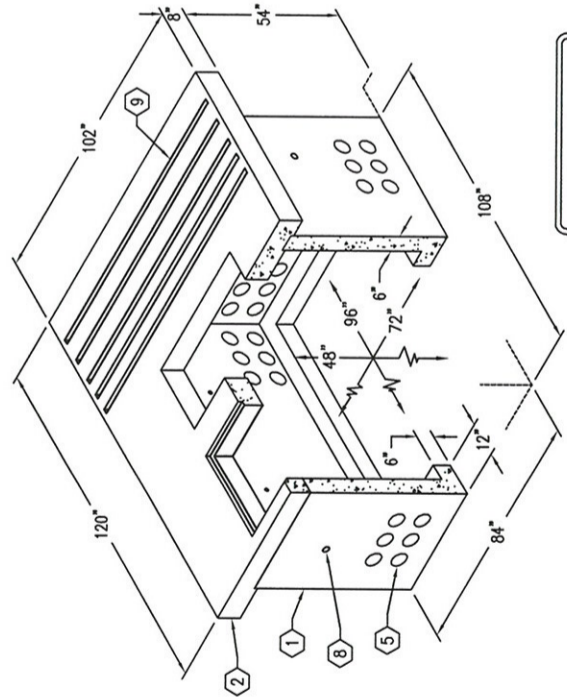
THE FOLLOWING MATERIAL TO BE SHIPPED WITH EACH VAULT:
(a) 7/8" x 1 3/4" CONSEAL GASKET (60 FT. REQ'D)

ORDERING INFORMATION

K8610-SB48-12 FOR ASSEMBLY AS SHOWN.
APPROVED FOR L.A.D.W.P. SPEC. UB712-34.
TOTAL WEIGHT OF ASSEMBLY AS SHOWN IS 18,600 lbs.

NOTE: GROUNDING HARDWARE NOT INCLUDED

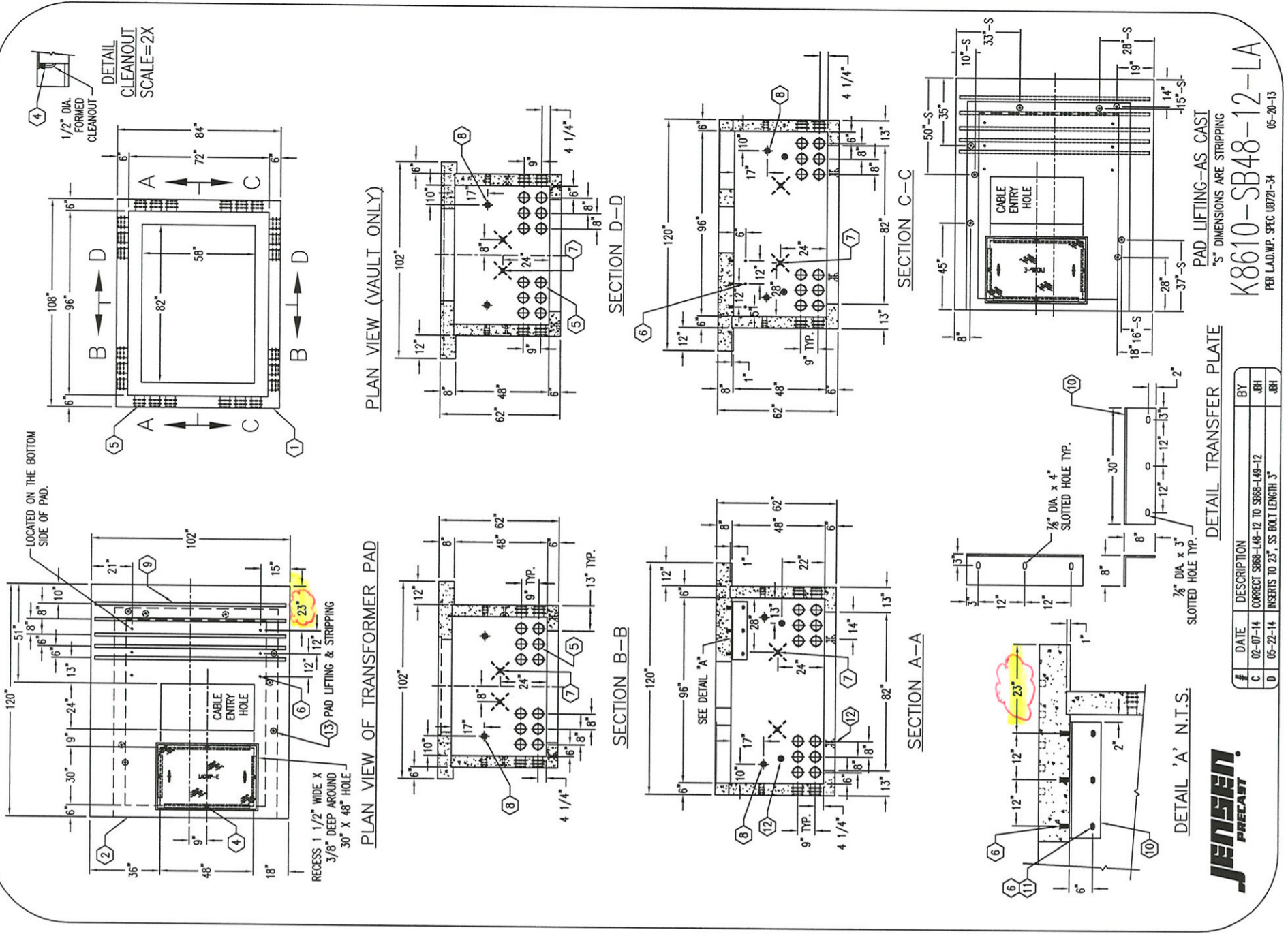
THE FOLLOWING MATERIALS ARE TO BE SHIPPED LOOSE:
(10)(11) SEE MATERIAL LIST, ABOVE



MINIMUM EXCAVATION SIZE:
8'-0" x 12'-0" x 48" (PHI REQ'D)

K8610-SB48-12-LA

PER L.A.D.W.P. SPEC UB721-34 05-20-13



#	DATE	DESCRIPTION	BY
C	02-07-14	CORRECT SB68-L48-12 TO SB68-L49-12	JBH
D	05-22-14	INSERTS TO 23". SS BOLT LENGTH 3"	JBH

DETAIL TRANSFER PLATE

PAD LIFTING-AS CAST
5" DIMENSIONS ARE STRIPPING

K8610-SB48-12-LA

PER L.A.D.W.P. SPEC UB721-34 05-20-13