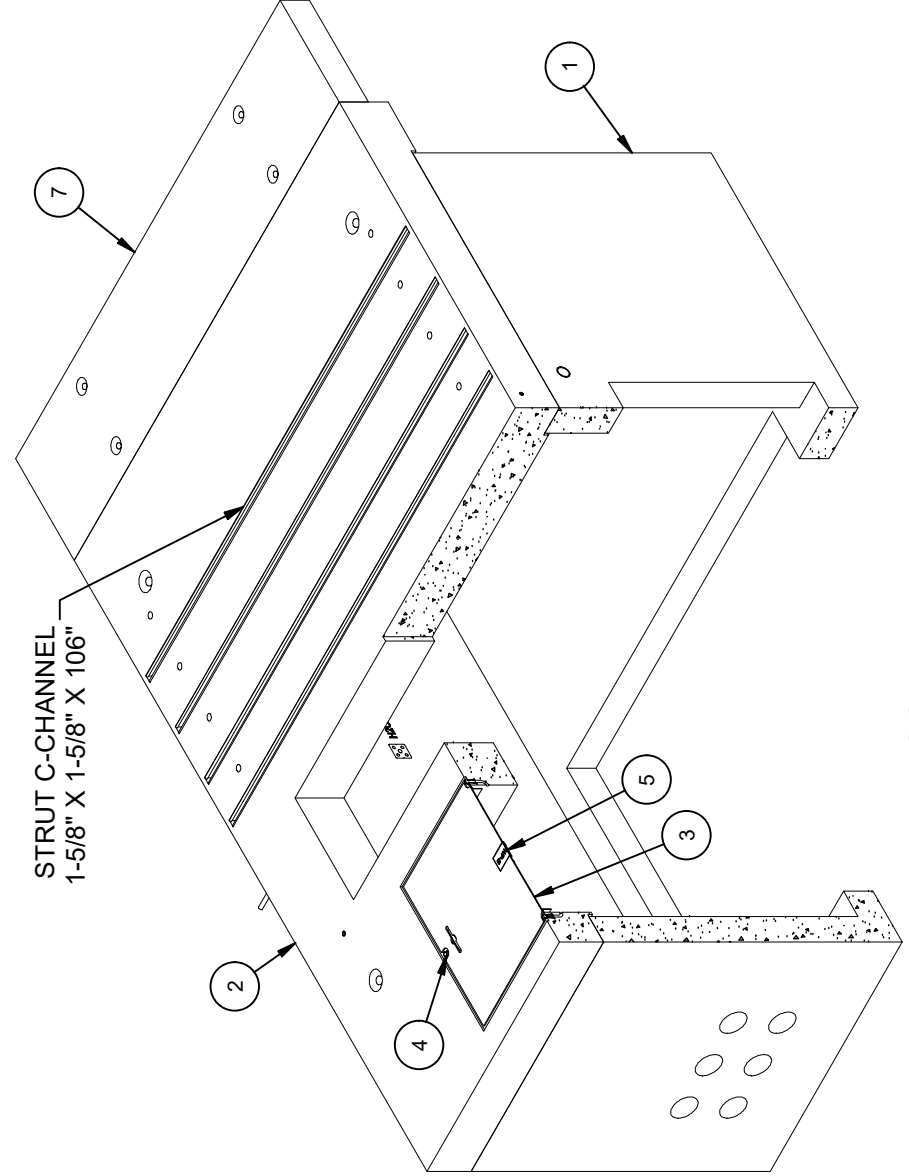


DESIGN NOTES

- CONCRETE DESIGNED IN ACCORDANCE WITH L.A.D.W.P. SPEC. P178, ACI 318R-11, AND ASTM C857-14, USING 5,500 PSI COMPRESSIVE STRENGTH CONCRETE AT 28 DAYS AND 60,000 PSI YIELD STRENGTH ASTM A-706 STEEL REINFORCEMENT PER CALC. #32950.
- COVER IS DESIGN FOR 300 PSF PARKWAY LOADING PER CALC. #32215.
- INSTALLATION. VAULT TO BE PLACED ON A MIN. 6" COMPACTED CRUSHED ROCK 1", GRADE A or CONCRETE AGGREGATE #3, GRADE B (SSPWC, SUBSECTIONS 200-1.2 & 200-1.4), INSTALLATION AND EVEN LOAD DISTRIBUTION.
- CONCRETE MIX USED IN POURING THIS PRODUCT SHALL USE FLY ASH AND DCI AS AN ADMIXTURE.
- EACH CONCRETE SECTION SHALL BE STENCILED ON THE INSIDE & OUTSIDE WITH "JENSEN PRECAST", THE DESIGNATION "DWP/FA-CN" or "DWP/F-CN-SC" IF SCC MIX USED, AND THE DATE OF POUR.
- EACH CONCRETE SECTION SHALL HAVE CAST-IN ON THE INSIDE "JENSEN", THE YEAR, AND THE DESIGNATION "FA-CN" or "F-CN-SC" IF SCC MIX USED.
- "H20-GRD" STENCILED IN RED LETTERS (1 1/2" MIN. - 2" MAX.)
- MINIMUM EXCAVATION SIZE: 10'-0" X 12'-0" X DEPTH REQD.
- FOR COMPLETE DESIGN AND PRODUCT INFORMATION CONTACT JENSEN PRECAST.



ISO VIEW

LIFTING NOTES

- FIELD INSTALLATION: PLANT DEMOLING: MINIMUM HANDLING CONCRETE STRENGTH F_c = 5500 PSI RIGGING EQUALIZER REQUIRED TO EQUALIZE LOAD TO 4 LIFTING POINTS WITH A SLING ANGLE BETWEEN 60° AND 90°
- BURY DEPTH: -0.8' - 0.0' to Top
- WATER LEVEL: Below Structure APPROX. WEIGHT: 28082.3 Lbs
- DESIGN SPEC: ACI 318, ASTM C857 LOADING SPEC: A-16 (AASHTO HS20-44)
- AGENCY: LADWP AGENCY SPEC: UB721-19-G1 R12

BILL OF MATERIALS

ITEM	UNIT QTY	QTY	PART NUMBER	DESCRIPTION	MASS(lb)
1	1	1	100012302	Vault 96120x55 Rect. Bottom Section Terminators LADWP UB721-19-G1 R12	15973
2	1	1	100012258	Pad 108144x10 30"x48"E LADWP UB721-19 R12	10427
3	1	1	100006640	DAS1-SD-3048-DX-DP-G-FONT-PAGV (SC3048 PAGV)	124
4	1	4	100007122	BOLT PENTA 1/2-13 UNC 0.875 HEAD 1.5L 304SS	
5	1	1	100006748	NAME PLATE SS - LADWP-E	
6	1	1	100007650	NAME PLATE HARDWARE KIT	
7	1	1	200067396	Pad 24108x6 LADWP UB721-19-G1 R12	1350
8	1	6	100007116	ROD THREADED NC E-PLTDW/NUT&WSHR 7/8 X 14	
9	1	2	100005170	CUSTOM FORMED ANGLE-6X6X.375 W/ SLOTS	
10	1	12	100008101	SCREW BUTT HEAD CAP 1/2-12 2 304SS	
11	1	15	100007134	WASHER FLAT 1/2 REGULAR TYPE A 316SS	
12	1	6	100003545	BOLT HEX 3/4-10 UNC 2 ZINC	
13	1	2	100008106	PENTA BOLT 5/8X1-1/2 W/CAPWASH	
14	1	2	100007587	PLATE 1X10X30 W/HLS 3/8 PLT WLD GALV	
15	1	2	100006067	STRUT SLOTTED C-CHANNEL 1-5/8 X 1-5/8 12GA BOLT-ON GALV 72IN	
16	1	2	100007113	ROD THREADED COIL YELLOW DIP 3/4 X 18"	
17	1	8	100007010	HEX COIL NUT 3/4-4.5 ZINC - PLATED	
18	1	4	100008121	WASHER 3X3X.5 W.875 HOLE GALV	
19	1	3	100004043	BOLT HEX 1/2-13 UNC 1.5 316SS	
20	1	2	100007071	BRACKET GALV	
21	1	2	100009239	ROD THREADED COIL YELLOW DIP 3/4 X 10-1/2"	
22	1	4	100002664	WASHER FLAT 3/4 REGULAR TYPE A GALV	
23	1	1	100007588	PLATE 8X1/4X7-8 W/SLOTS GALV	
24	1	1	100006787	ANGLE F4864-CT49 GALV	
25	1	2	100003782	HEX COIL BOLT 3/4 X 4 PLAIN	
26	1	1	100005749	SEALANT JOINT BUTYL RUBBER ASTM C-990 AND M198 CS-102 1IN EQUIV X14.5FT PER BOX 118FT	

REVISION HISTORY	
REV	DESCRIPTION
D-4	REVISED PER LADWP UB721-19 REV 12
DATE	3/28/2024
APPROVED	

DESCRIPTION:
Slab Box Layout 96120x54 Terminators 30"x48"E LADWP UB721-19-G1 R12

PART NUMBER: 100010632 LAYOUT REVIEW
DRAWN BY: J. Prado

CREATED: 12/16/2019
MODIFIED: 3/28/2024

©2024 Jensen Precast-All rights reserved.
All materials appearing as Jensen Precast documents and the like are proprietary work product and are protected under U.S. copyright and other laws.
Unless in conjunction with business conducted with Jensen Precast, any use of Jensen Precast work product without express, written consent is prohibited, and recipient is prohibited from distributing any and all work product to non-approved third parties under penalty of civil action.

EST. 1968

WWW.JENSENPRECAST.COM

WATER LEVEL:	Below Structure	APPROX. WEIGHT:	28082.3 Lbs
DESIGN SPEC:	ACI 318, ASTM C857	LOADING SPEC:	A-16 (AASHTO HS20-44)
AGENCY:	LADWP	AGENCY SPEC:	UB721-19-G1 R12

