

9'-0" x 15'-0" TRANSFORMER PAD W/6'-0" x 10'-0" VAULT x 48" DEEP

**MATERIAL LIST-K915-SB48-12**

ITEM	PART NO.	DESCRIPTION	CAGE NO./LOCATE	WEIGHT/MOUNT
1	SB610-L48-N-12	48" LOWER SECTION WITH TERMINATORS	CG-SB610-L48-N-12	12,950 lbs
2	PD108180-T9-12	9" TRANSFORMER PAD	CG-PD108180-T9-12(202)	12,185 lbs
3	SC3048-PAGV-12	(1) PIECE COVER ARMOUR STYLE MARKED "LADWPE" w/4-1/2" x 1-1/2" S.S.P.H. BOLTS (2)GALV. DROP HANDLES		129 lbs
4	55-30-53	5" DIA. DOUBLE MEMBRANE TERMINATOR	LOWER SECTION	(48) SHELL
5	55-10-416	1/2" DIA. P35T OPEN BTM INSERT WITH CLEAN OUT HOLE	TRANSFORMER PAD	(8) TABLE
6	55-10-830	1" DIA. X 3 1/2" COIL INSERT	LOWER SECTION	(6) CORE
7	55-20-404	4 TON x 4-3/4" GALVANIZED RISS HANDLING	TRANSFORMER PAD	(4) TABLE
8	55-21-104	1-5/8" x 1-5/8" GALV UNISTRUT x 104" LONG	LOWER SECTION	(4) CORE & SHELL
9	55-30-20	2" DIA. TERMINATOR FOR GROUND WIRE	LOWER SECTION	(3) SURFACE (8) CORE

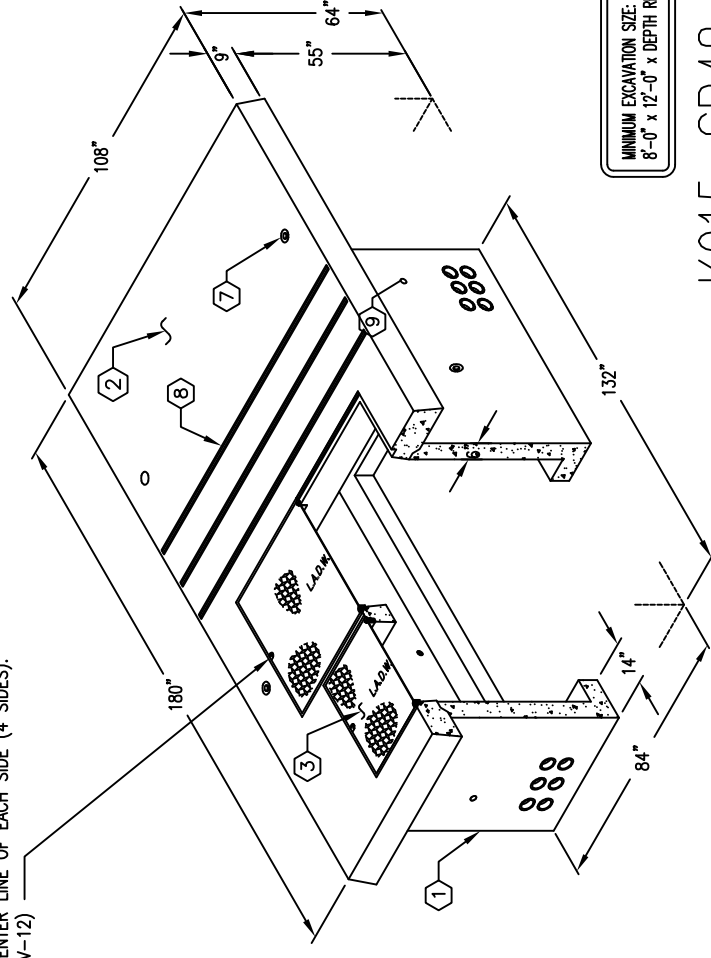
**NOTES:**

- CONCRETE DESIGNED IN ACCORDANCE WITH L.A.D.W.P. SPEC. P 178-R6 USING 5,500 PSI COMPRESSIVE STRENGTH CONCRETE AT 28 DAYS AND 60,000 PSI YIELD STRENGTH ASTM A-706 STEEL REINFORCEMENT PER CALC. #50616.
- TRANSFORMER PAD DESIGNED FOR 100 PSF LIVE LOAD AND 1600 PSF DEAD LOAD.
- VAULT TO BE PLACED ON A MIN. 6" BASE OF CRUSHER RUN FOR EASE OF INSTALLATION AND EVEN LOAD DISTRIBUTION.
- CONCRETE MIX USED IN POURING THIS PRODUCT SHALL USE FLY ASH AND DCI AS AN ADMIXTURE.
- EACH CONCRETE SECTION SHALL BE MARKED ON THE INSIDE & OUTSIDE WITH "JENSEN PRECAST", THE DESIGNATION "DWP/FA-CN", AND THE DATE OF POUR.
- EACH CONCRETE SECTION SHALL HAVE CAST-IN ON THE INSIDE "JENSEN", THE YEAR, AND THE DESIGNATION "FA-CN".

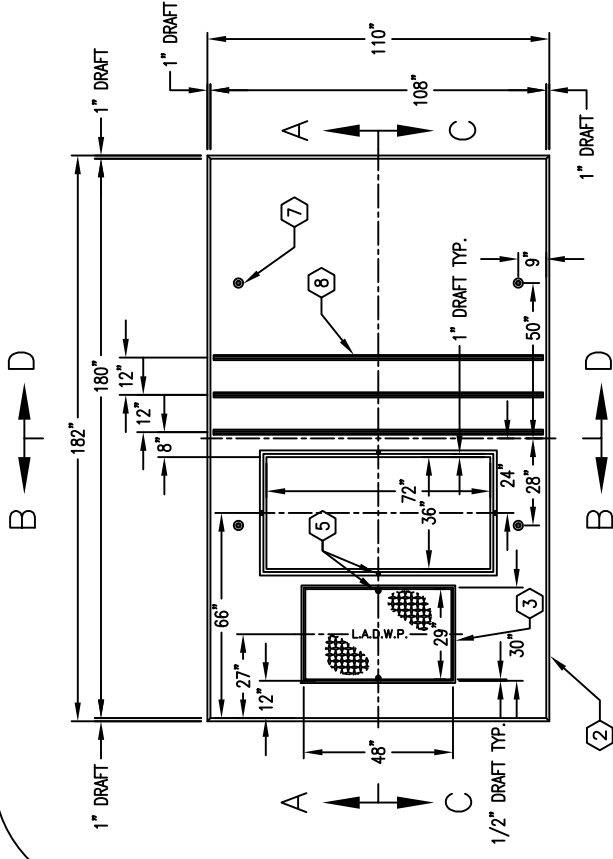
**ORDERING INFORMATION:**

K915-SB48-N-12 FOR ASSEMBLY AS SHOWN.  
APPROVED FOR L.A.D.W.P. SPEC. UB721-08.  
TOTAL WT. OF ASSEMBLY 25,300 Lbs.

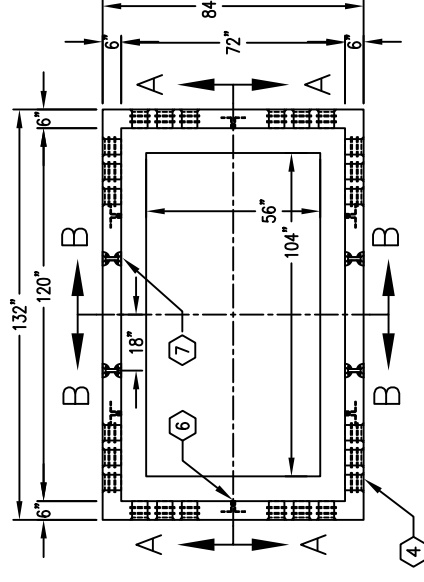
OPTIONAL 3/16" DIAMOND PLATE COVER TO BE PROVIDED UPON REQUEST WITH NON-CORROSIVE FASTENING DEVICE ON THE CENTER LINE OF EACH SIDE (4 SIDES). (SC915-GV-12)



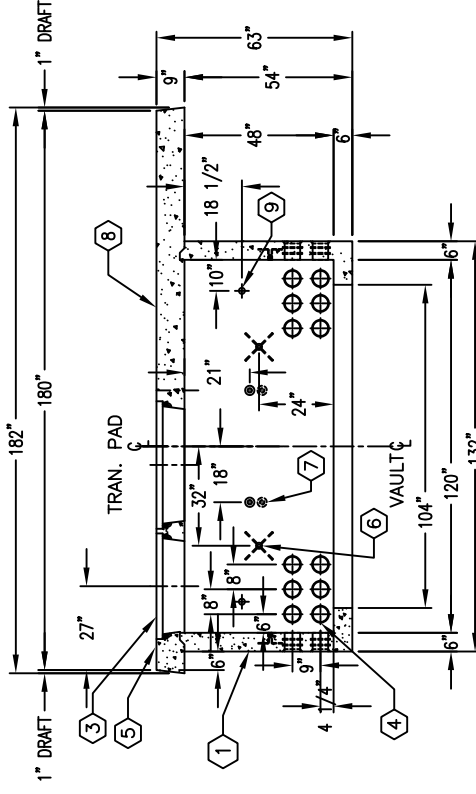
MINIMUM EXCAVATION SIZE:  
8'-0" x 12'-0" x DEPTH REQ'D.



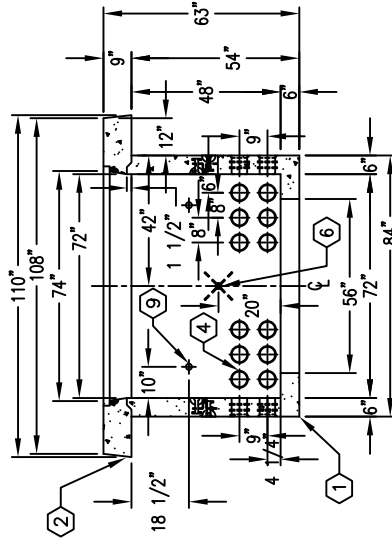
PLAN VIEW OF TRANSFORMER PAD



PLAN VIEW, VAULT ONLY



SECTION A-A



SECTION B-B

#	DATE	DESCRIPTION	BY
H	12-28-11	UPDATED LAYOUT TO REV. 12	J.P.
G	02-22-01	ADJUST DEPTH FOR 48" BTL.	DRG