

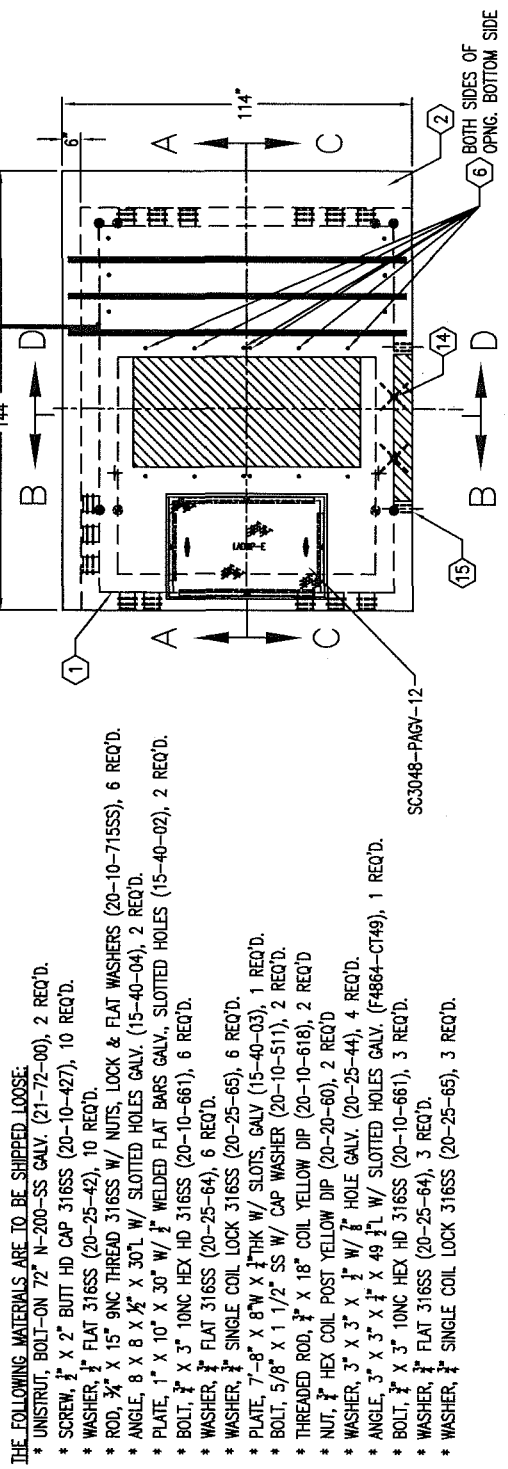
9'-6" x 12'-0" TRANSFORMER PAD 'G1' W/8'-0" x 10'-0" 'G1' VAULT x 54" DEEP

MATERIAL LIST

ITEM PART NO.	DESCRIPTION	CAGE NO./LOCATE	WEIGHT/MOUNT
1	SB810-L55-G1-12	CG-SB810-L55-G1-12	15,850 lbs
2	PD114144-T10-G1-12	CG-PD114144-T10-G1-12	10,650 lbs
3	SC3048-PAGV-12		139 lbs.
4	55-10-416	TRANSFORMER PAD	(4) TABLE
5	55-20-078	BOTTOM SECTION	(2) CORE
6	55-10-424	TRANSFORMER PAD	(12) SURFACE
7	KNOCKOUT	BOTTOM SECTION	(1) CORE
8	55-30-52	BOTTOM SECTION	(26) CORE
9	55-20-409	BOTTOM SECTION	(4) SURFACE
10	55-20-404	TRANSFORMER PAD	(4) TABLE, (4) SURFACE
11	55-35-03	BOTTOM SECTION	(4) CORE
12	HOLE	BOTTOM SECTION	(6) CORE
13	55-10-630	TRANSFORMER PAD	(6) TABLE
14	55-10-650	BOTTOM SECTION	(12) CORE
15	55-21-110	TRANSFORMER PAD	(3) SHELL
16	55-10-525	BOTTOM SECTION	(2) SHELL
17		BOTTOM SECTION	(2) CORE
		TRANSFORMER PAD	(3) TABLE
		TRANSFORMER PAD	(2) TABLE

NOTES:

- VAULT DESIGNED IN ACCORDANCE WITH L.A.D.W.P. SPEC C721, ACI 318 & ASTM C857, USING 5,500 PSI CONCRETE AND ASTM A-706 GR.60 STEEL REINFORCEMENT PER CALCS. #33790.
- COVER DESIGNED FOR PARKWAY (300 PSF) LOADING PER CALC. #32215.
- CONCRETE MIX USED IN POURING THIS PRODUCT SHALL USE FLY ASH AND DCI AS AN ADMIXTURE.
- EACH CONCRETE SECTION SHALL BE MARKED ON THE INSIDE & OUTSIDE WITH "JENSEN PRECAST", THE DESIGNATION "DWP/FA-CN" or "DWP/F-CN-SC" IF SCC MIX USED, AND THE DATE OF POUR.
- EACH CONCRETE SECTION SHALL HAVE CAST-IN ON THE INSIDE "JENSEN", THE YEAR, AND THE DESIGNATION "FA-CN" or "F-CN-SC" IF SCC MIX USED.
- VAULT TO BE PLACED ON A MIN. 6" COMPACTED CRUSHED ROCK 1", GRADE A OR CONCRETE AGGREGATE NO. 3 GRADE B (SSPWC, SUBSECTIONS 200-1.2 & 200-1.4) FOR EASE OF INSTALLATION AND EVEN LOAD DISTRIBUTION.



#	DATE	DESCRIPTION	BY
E	10-20-15	REV ITEM 5 TO 4" THRU HOLE PER LAJMP	ED
F	06-01-16	REV PER DEL. GROUND HOLE, ADD GROUND PL. W/ WIRE, ADD DETAIL A	ED