

# 5'-1" x 5'-1" x 4" BTV42 BURD TOP CAP

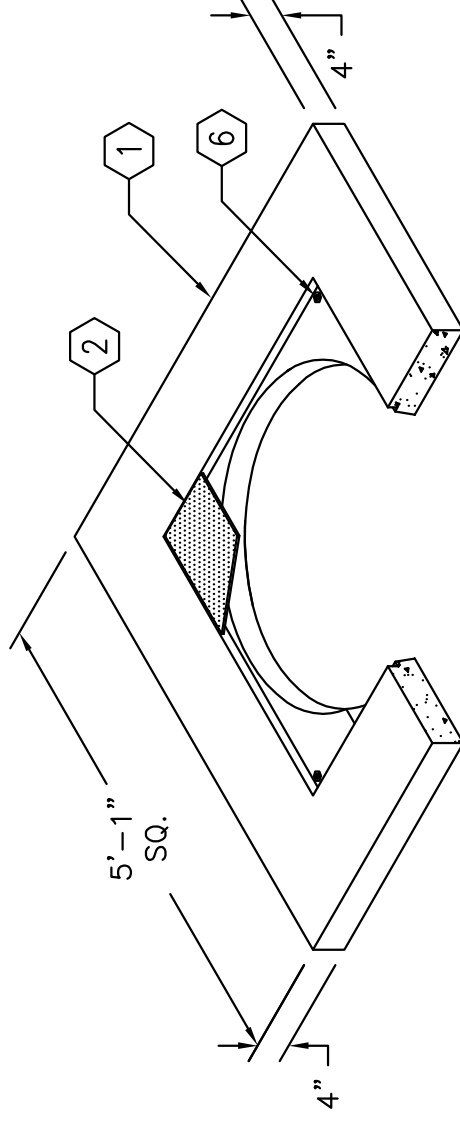
MODEL KBTV42-T4-11  
EDISON SPEC.

**NOTES:**

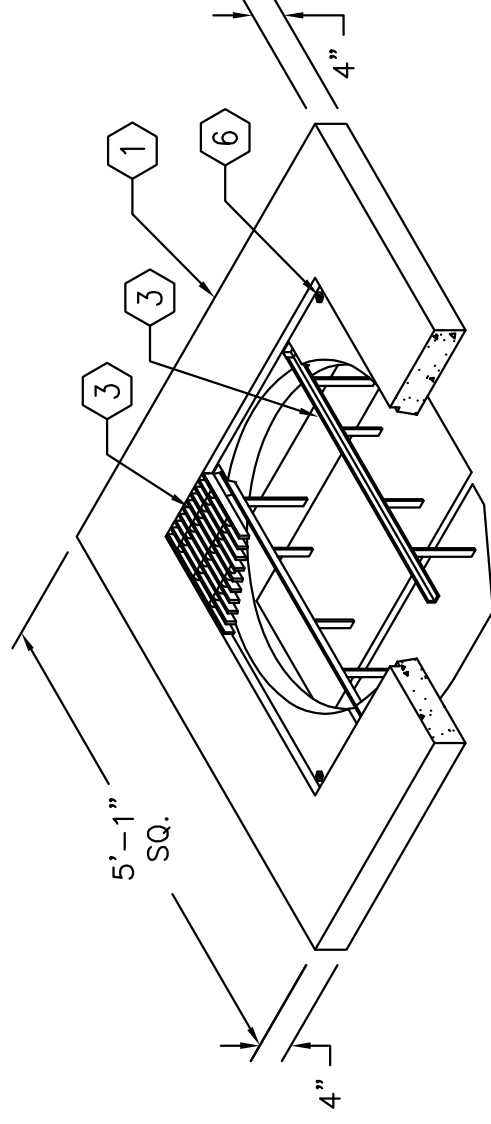
■ CONCRETE DESIGNED IN ACCORDANCE WITH AASHTO H-20-44 TRAFFIC BRIDGE LOADING USING 5,500 PSI [37.92MPa] COMPRESSIVE STRENGTH CONCRETE AND 60,000 PSI [413.2MPa] YIELD STRENGTH ASTM A-706 STEEL REINFORCEMENT PER CALC. #

■ TO BE PLACED ON A LEVEL MIN. 6" BASE OF CRUSHER RUN FOR EVEN LOAD DISTRIBUTION AND EASE OF INSTALLATION.

1. BTV42-T4-11, 4" TOP SLAB (CG-BTV42-T4-11), WT. 1,100 Lbs.
2. 3/16" STEEL GALV. SOLID COVER, MARKED "EDISON" SC3838-BTV42-11 (4) 3/8"-13NC x 1 1/2" STAINLESS STEEL PENTAHEAD BOLTS, WT. 129 Lbs.
3. 10-40-40, PARKWAY GALVANIZED GRATE, W/ (12-30-40) STEEL BAFFLE, (4) 3/8"-13NC x 1 1/2" STAINLESS STEEL PENTAHEAD BOLTS, WT. 129 Lbs.
4. 1 1/4" WIDE x 1" DEEP GROOVE FOR BAFFLE, LOCATE (4) TABLE MTD. IN ROOF SECT
5. 1/2" LOOP INSERT, LOCATE (2) TABLE MTD. FOR LIFTING
6. 3/8" P-25-T INSERT, LOCATE (4) TABLE MTD. IN ROOF SECT.



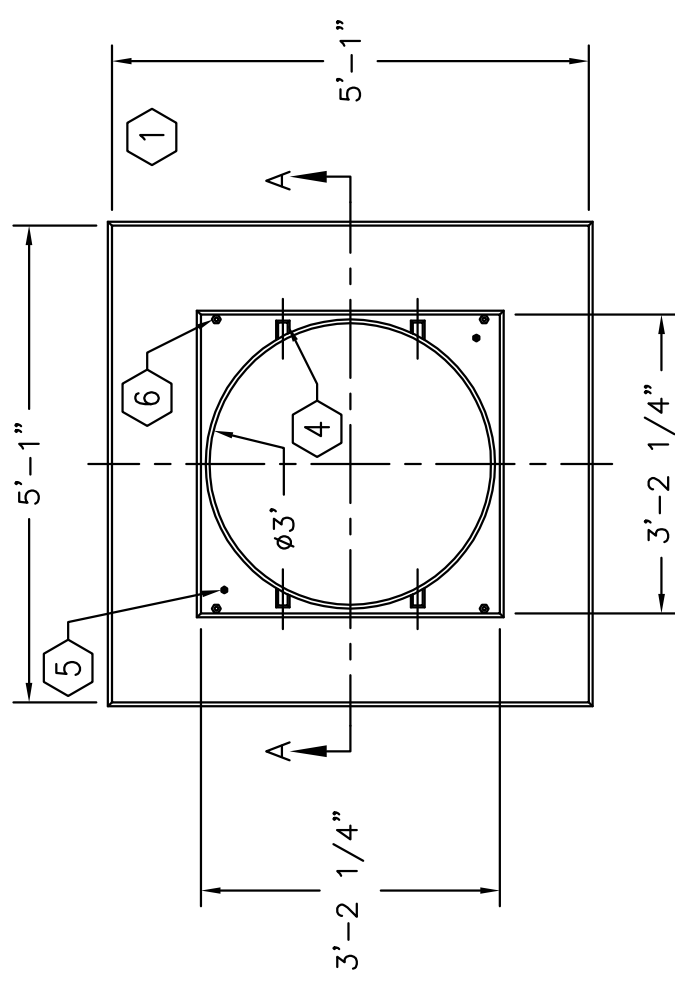
TOP CAP WITH SOLID COVER  
KBTV42-T4-11CV



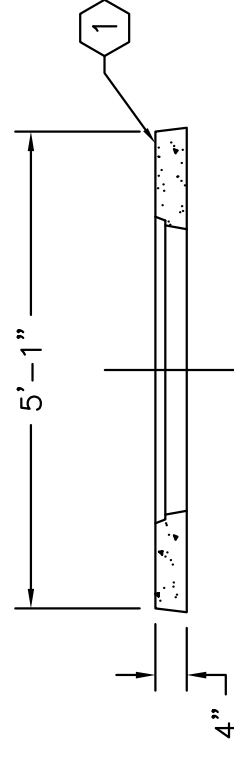
TOP CAP WITH GRATE & BAFFLE  
KBTV42-T4-11GR

# 5'-1" x 5'-1" x 4" BTV42 BURD TOP CAP

MODEL KBTV42-T4-11  
EDISON SPEC.



PLAN VIEW OF TOP CAP



SECTION A-A