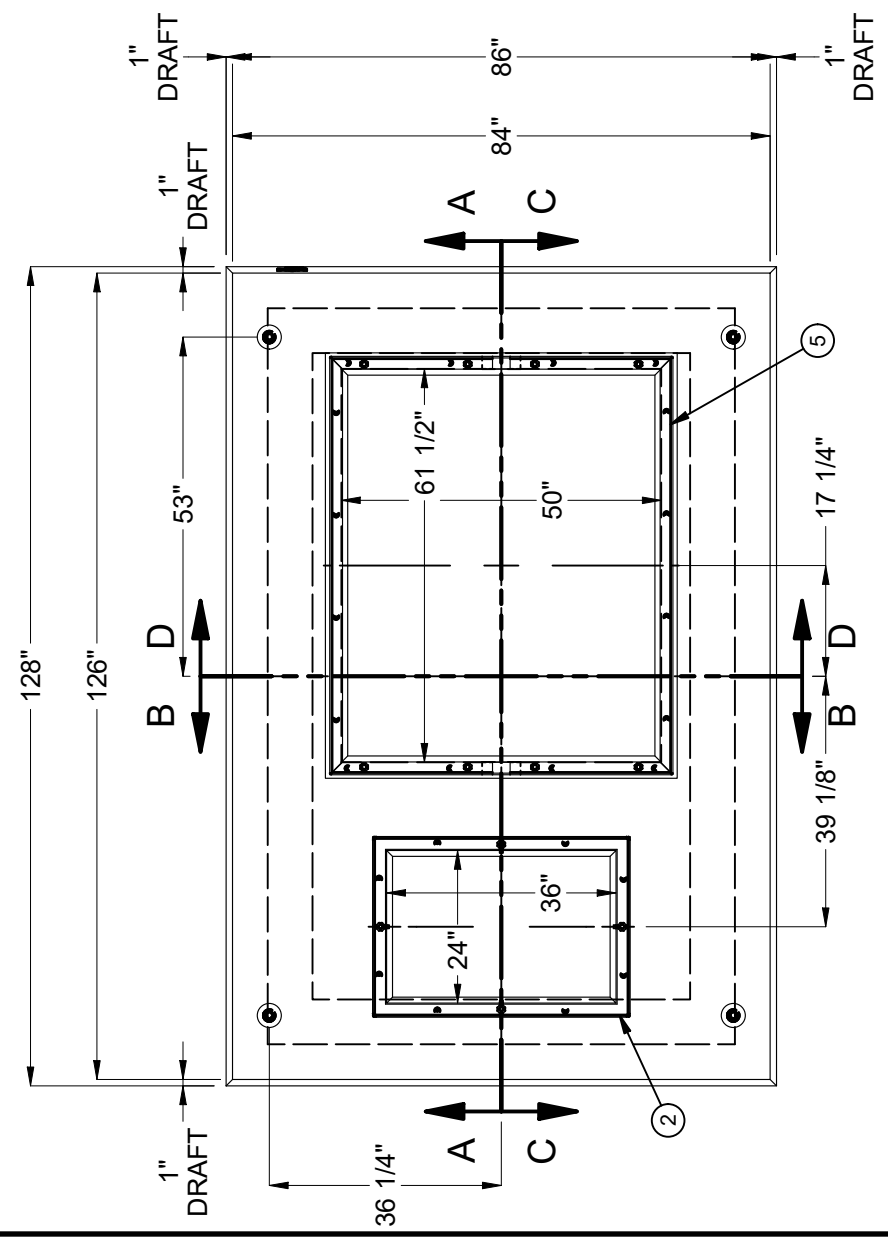


NOTES:

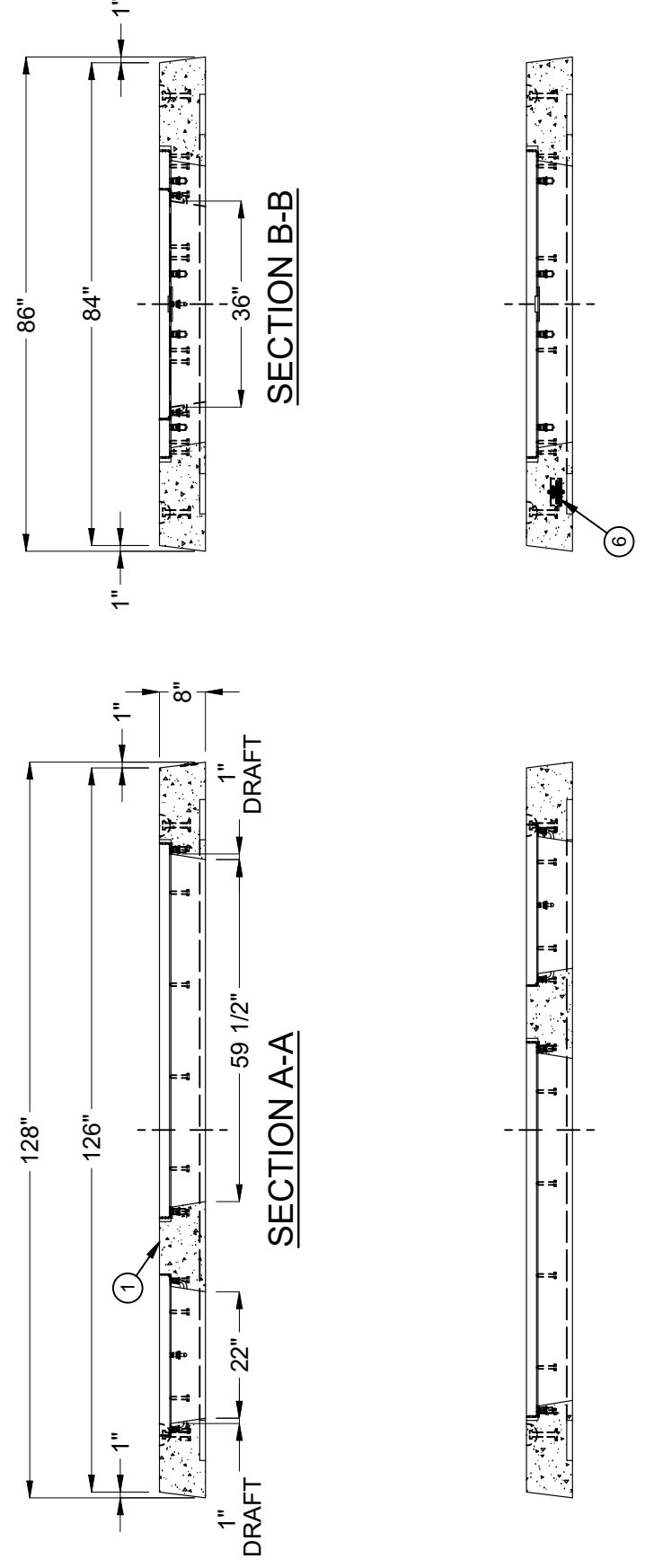
- ALL PARTS TO BE STENCILED: MFG DATE / JOB NUMBER / PRODUCT ID / WEIGHT.

BILL OF MATERIALS

ITEM	UNIT QTY	QTY	PART NUMBER	DESCRIPTION
1	29.911 ft^3	29.911 ft^3	100024079	CONCRETE #19 MOD SCC
2	1	1	100006680	FRAME 2436 CAST-IN GALV
3	1	12	100008114	INSERT THREADED METAL 1/2-13 UNC 1-1/2 IN OPEN
4	1	4	100002874	ANCHOR DOGBONE P52 4T X 4-3/4" GALV
5	1	1	100020056	FAS-4860-CD-G-FONT-OH02-(F586-PB-IID)
6	1	1	100008132	RFI PLASTIC TAG IDENCIA
7	1	1	100017938	REINFORCING MAT 100017938



PLAN VIEW



LIFTING NOTES

- DEMOLDING: THIS CONCRETE PRODUCT IS DESIGNED TO BE LIFTED AT 2,500 PSI WITH (4) LIFT CONNECTIONS EQUALLY LOADED TO (4) LIFTING POINTS AT A MINIMUM 90° SLING ANGLE, MEASURED FROM HORIZONTAL.
- INSTALLATION: THIS CONCRETE PRODUCT IS DESIGNED TO BE LIFTED AT 5,500 PSI WITH (4) LIFT CONNECTIONS EQUALLY LOADED TO (4) LIFTING POINTS AT A MINIMUM 90° SLING ANGLE, MEASURED FROM HORIZONTAL.

BURY DEPTH:	0.0' - 0.3' to Top of Top Slab
WATER LEVEL:	3.0'
DESIGN SPEC:	ASTM C857, ACI 318
REINFORCEMENT TYPE:	Rebar
WEIGHT:	4536.53 Lbs
LOADING SPEC:	A-03 (300 psf)
LIFTING TYPE:	Dogbone

©2018 Jensen Precast. All rights reserved. All materials appearing as Jensen Precast documents and the like are proprietary work product and are protected under U.S. copyright and other laws. Unless in conjunction with business conducted with Jensen Precast, any use of Jensen Precast work product without express, written consent is prohibited, and recipient is prohibited from distributing any and all work product to non-approved third parties under penalty of civil action.

REV	DESCRIPTION	DATE	APPROVED
B	INITIAL RELEASE	2/11/2021	

DESCRIPTION:	Pad 84126x8 IID
PART NUMBER:	100012210
CREATED:	1/20/2021
CASTING DRAWING	
DRAWN BY:	E. Carrillo
MODIFIED:	2/11/2021
REV:	A-3
SHEET:	1 OF 2