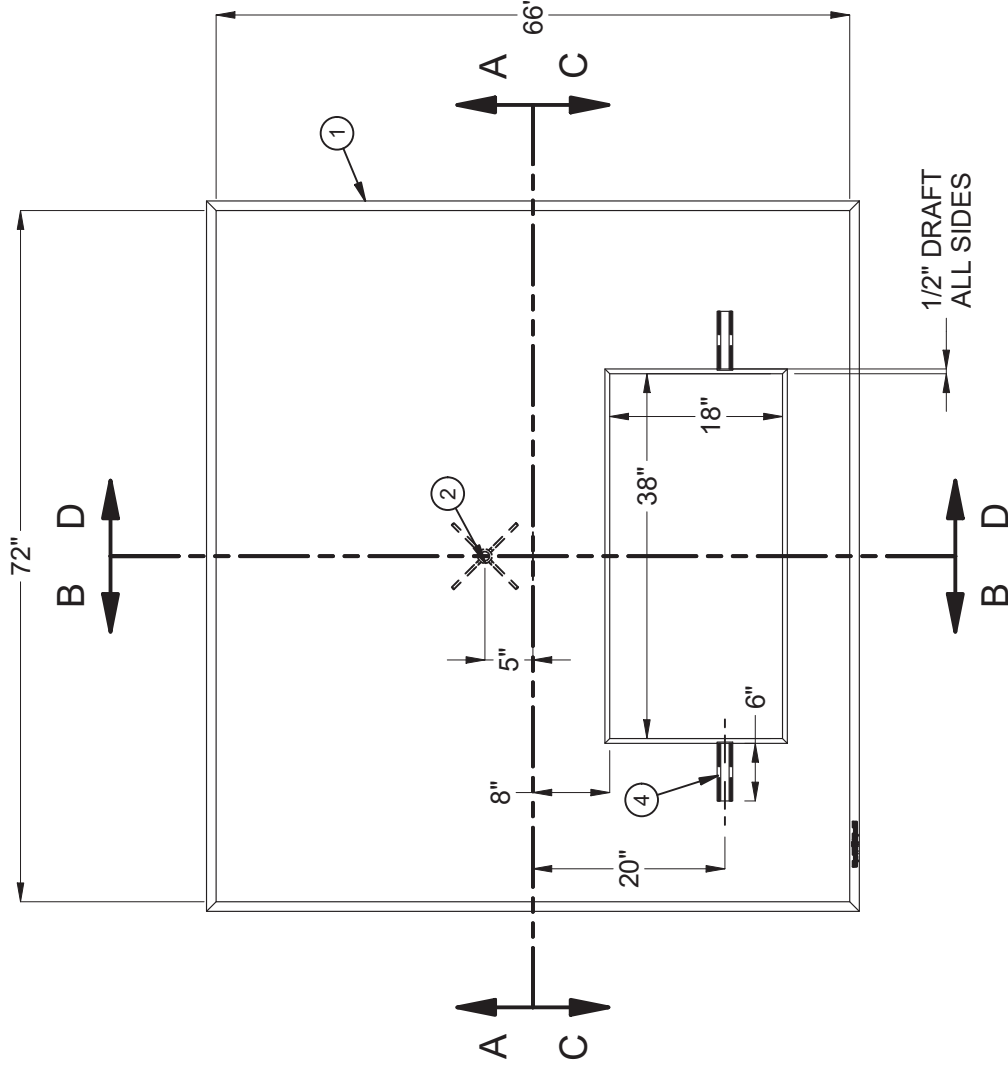


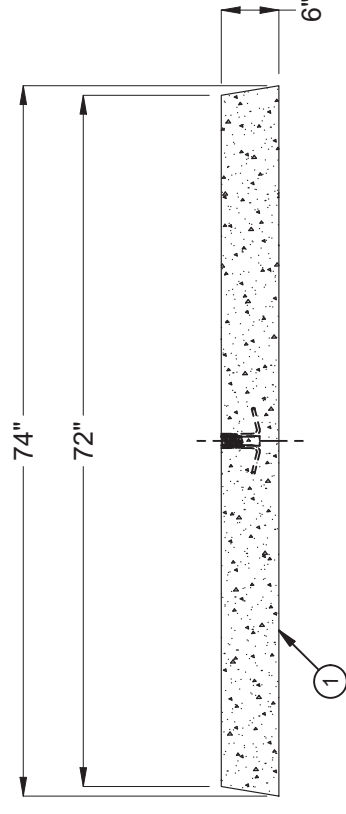
NOTES  
 ■ ALL PARTS TO BE STENCILED: MFG DATE / JOB NUMBER / PRODUCT ID / WEIGHT.

BILL OF MATERIALS				
ITEM	UNIT QTY	QTY	PART NUMBER	DESCRIPTION
1	14.490 ft <sup>3</sup>	14.490 ft <sup>3</sup>	100006029	CONCRETE 5500 PSI SCC ED
2	1	1	100002801	INSERT COIL THIN SLAB 4LEG 1 X 4 GALV CX-24
3	1	1	100008132	RFI PLASTIC TAG IDENCIA
4	6.000 in	12.000 in	100024619	STRUT C-CHANNEL CONCRETE INSERT 1-5/8 X 1-5/8 12GA W/ANCHORS GALV
5	1	1	100017997	REINFORCING MAT 100017997

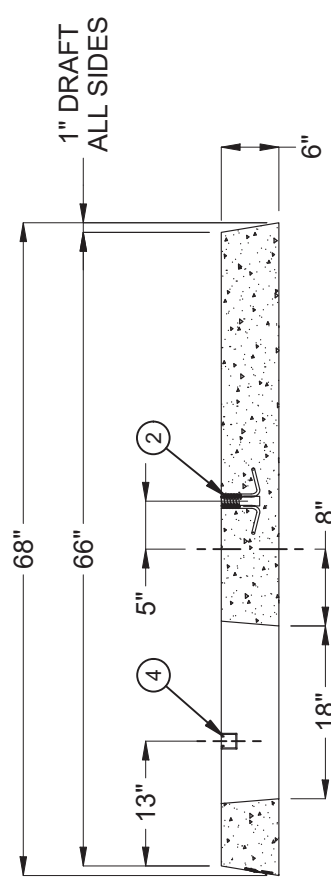
100012276.rpt



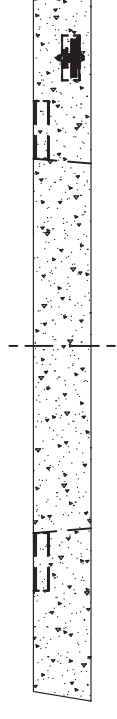
PLAN VIEW



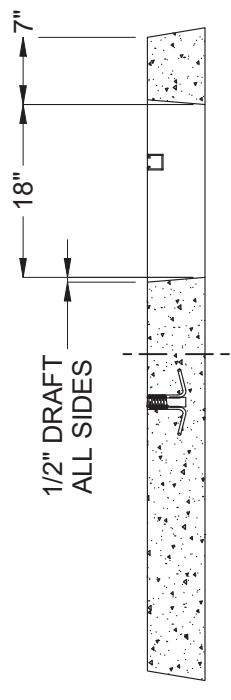
SECTION A-A



SECTION B-B



SECTION C-C



SECTION D-D

LIFTING NOTES

- DEMOLDING: THIS CONCRETE PRODUCT IS DESIGNED TO BE LIFTED AT 2500 PSI WITH 1 LIFT CONNECTION EQUALLY LOADED TO 1 LIFTING POINT AT A MINIMUM 90° SLING ANGLE, MEASURED FROM HORIZONTAL.
- INSTALLATION: THIS CONCRETE PRODUCT IS DESIGNED TO BE LIFTED AT 5500 PSI WITH 1 LIFT CONNECTION EQUALLY LOADED TO 1 LIFTING POINT AT A MINIMUM 90° SLING ANGLE, MEASURED FROM HORIZONTAL.

BURY DEPTH:	0.0' - 0.0' to Top of Section		
WATER LEVEL:	Below Structure	WEIGHT:	2180.7 Lbs
DESIGN SPEC:	ASTM C857	LOADING SPEC:	A-03 (300 psf)
REINFORCEMENT TYPE:	Rebar	LIFTING TYPE:	Insert

©2019 Jensen Precast. All rights reserved. All materials appearing as Jensen Precast documents and the like are proprietary work product and are protected under U.S. copyright and other laws. Unless in conjunction with business conducted with Jensen Precast, any use of Jensen Precast work product without express, written consent is prohibited, and recipient is prohibited from distributing any and all work product to non-approved third parties under penalty of civil action.

**JENSEN PRECAST** EST. 1968  
 WWW.JENSENPRECAST.COM

REVISION HISTORY			
REV	DESCRIPTION	DATE	APPROVED
B	MODIFIED REINFORCING MAT	2/20/2020	

DESCRIPTION:  
 Pad 6672x6 EDISON UGS SS540  
 CASTING LAYOUT

PART NUMBER:	100012276	DRAWN BY:	M. Zaragoza
CREATED:	6/25/2019	MODIFIED:	2/20/2020

REV: A  
 SHEET: 88  
 1 OF 1