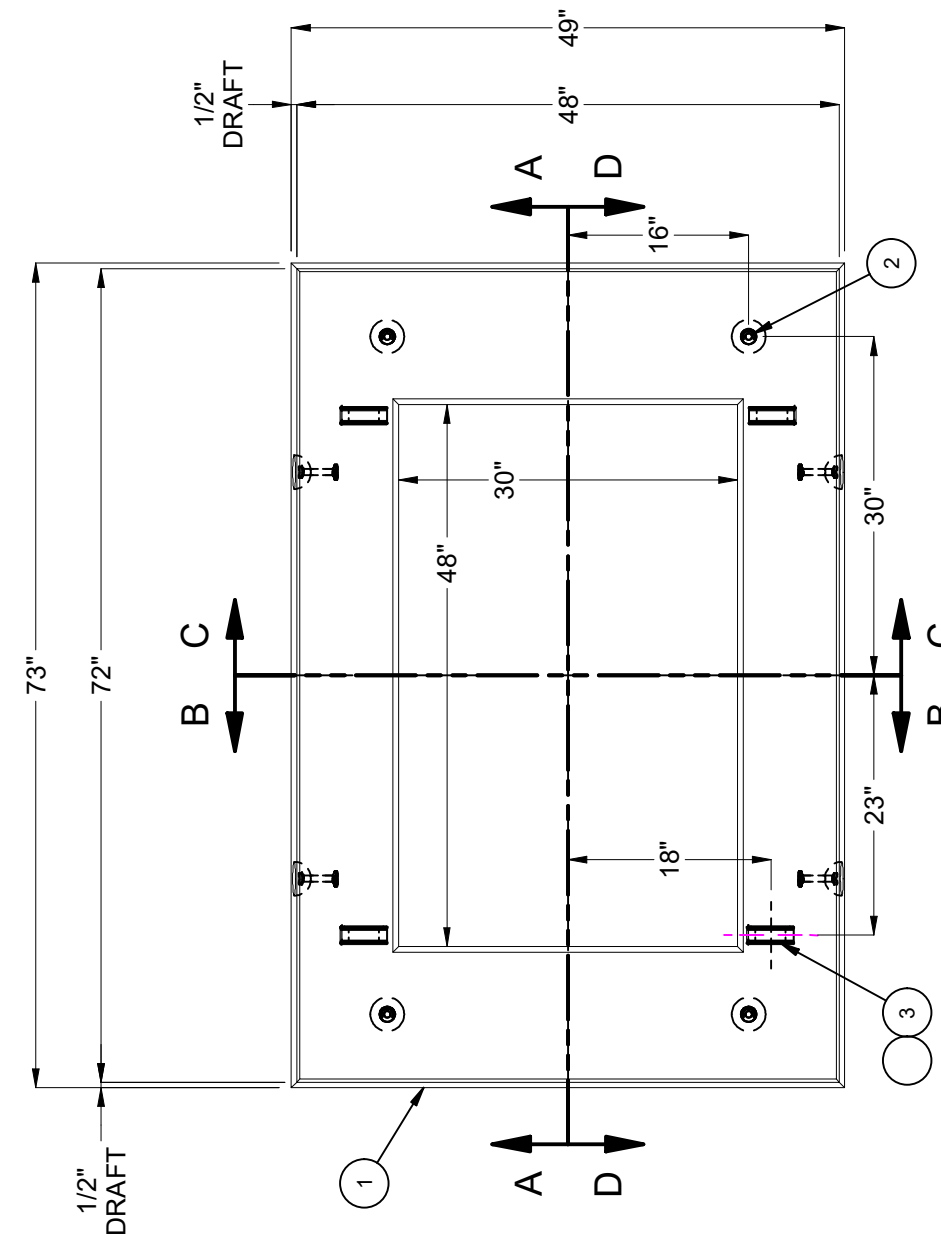


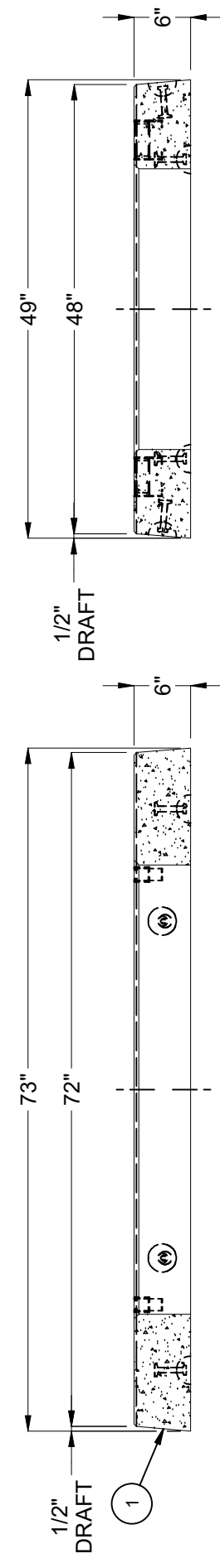
- NOTES**
- PAD CONCRETE DESIGNED PER ASTM C-857 LOAD DESIGNATION A-0.3 (300 PSF) PARKWAY LOADING / 30,000 lb TRANSFORMER, USING 5,500 PSI CONCRETE AND ASTM A-706 GR. 60 STEEL REINFORCEMENT PER CALCS. #30750.
 - ALL PARTS TO BE STENCILED: MFG DATE / JOB NUMBER / PRODUCT ID / WEIGHT.

BILL OF MATERIALS				
ITEM	UNIT QTY	QTY	PART NUMBER	DESCRIPTION
1	7.132 ft ³	7.132 ft ³	100006029	CONCRETE 5500 PSI SCC ED
2	1	8	100002867	ANCHOR DOGBONE P52 2T X 3-3/8" GALV
3	1	4	100006074	STRUT C-CHANNEL CONCRETE INSERT 1-5/8 X 1-5/8 12GA WIEND CAPS N-3200 4IN GALV
4	1	1	200040583*	REINFORCING MAT 200040583

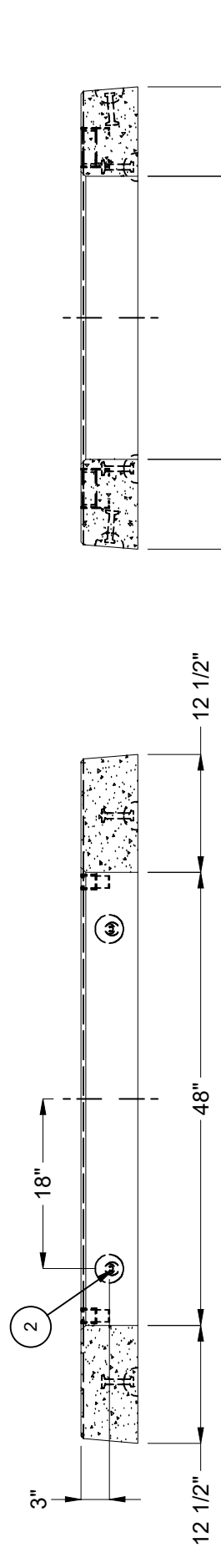
*USE 100017984 AS ALTERNATE REBAR CAGE



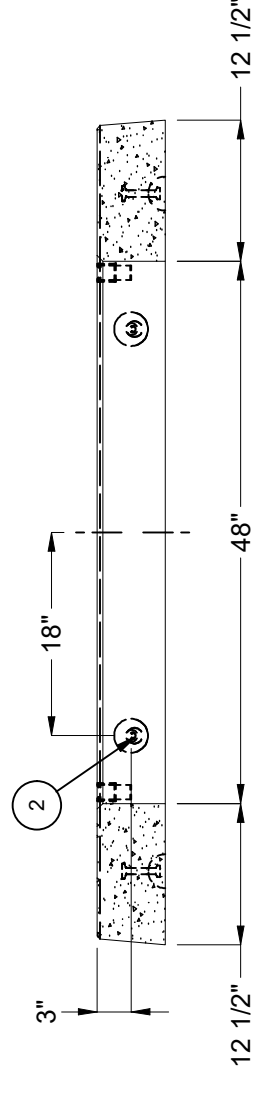
PLAN VIEW



SECTION A-A



SECTION B-B



SECTION C-C

- LIFTING NOTES**
- DEMOLDING: THIS CONCRETE PRODUCT IS DESIGNED TO BE LIFTED AT 2,500 PSI WITH 4 LIFT CONNECTIONS EQUALLY LOADED TO 4 LIFTING POINTS AT A MINIMUM 60° SLING ANGLE, MEASURED FROM HORIZONTAL.
 - INSTALLATION: THIS CONCRETE PRODUCT IS DESIGNED TO BE LIFTED AT 5,500 PSI WITH 4 LIFT CONNECTIONS EQUALLY LOADED TO 4 LIFTING POINTS AT A MINIMUM 90° SLING ANGLE, MEASURED FROM HORIZONTAL.
- | | |
|---------------------|---------------------|
| BURY DEPTH: | -0.3' - 0.3' to Top |
| WATER LEVEL: | Below Structure |
| DESIGN SPEC: | ACI 318, ASTM C857 |
| REINFORCEMENT TYPE: | Rebar |
| APPROX. WEIGHT: | 1117.12 Lbs |
| LOADING SPEC: | A-03 (300 psf) |
| LIFTING TYPE: | Dogbone |

©2024 Jensen Precast. All rights reserved. All materials appearing as Jensen Precast documents and the like are proprietary work product and are protected under U.S. copyright and other laws. Unless in conjunction with business conducted with Jensen Precast, any use of Jensen Precast work product without express, written consent is prohibited, and recipient is prohibited from distributing any and all work product to non-approved third parties under penalty of civil action.

REVISION HISTORY			
REV	DESCRIPTION	DATE	APPROVED
E	REPLACED STRUT C-CHANNEL	1/3/2024	

DESCRIPTION:	Pad 4872x6 Edison UGS SS591
PART NUMBER:	100012420
CASTING LAYOUT	
DRAWN BY:	J. Prado
MODIFIED:	6/25/2019
REV:	E-1
SHEET:	58
1 OF 1	