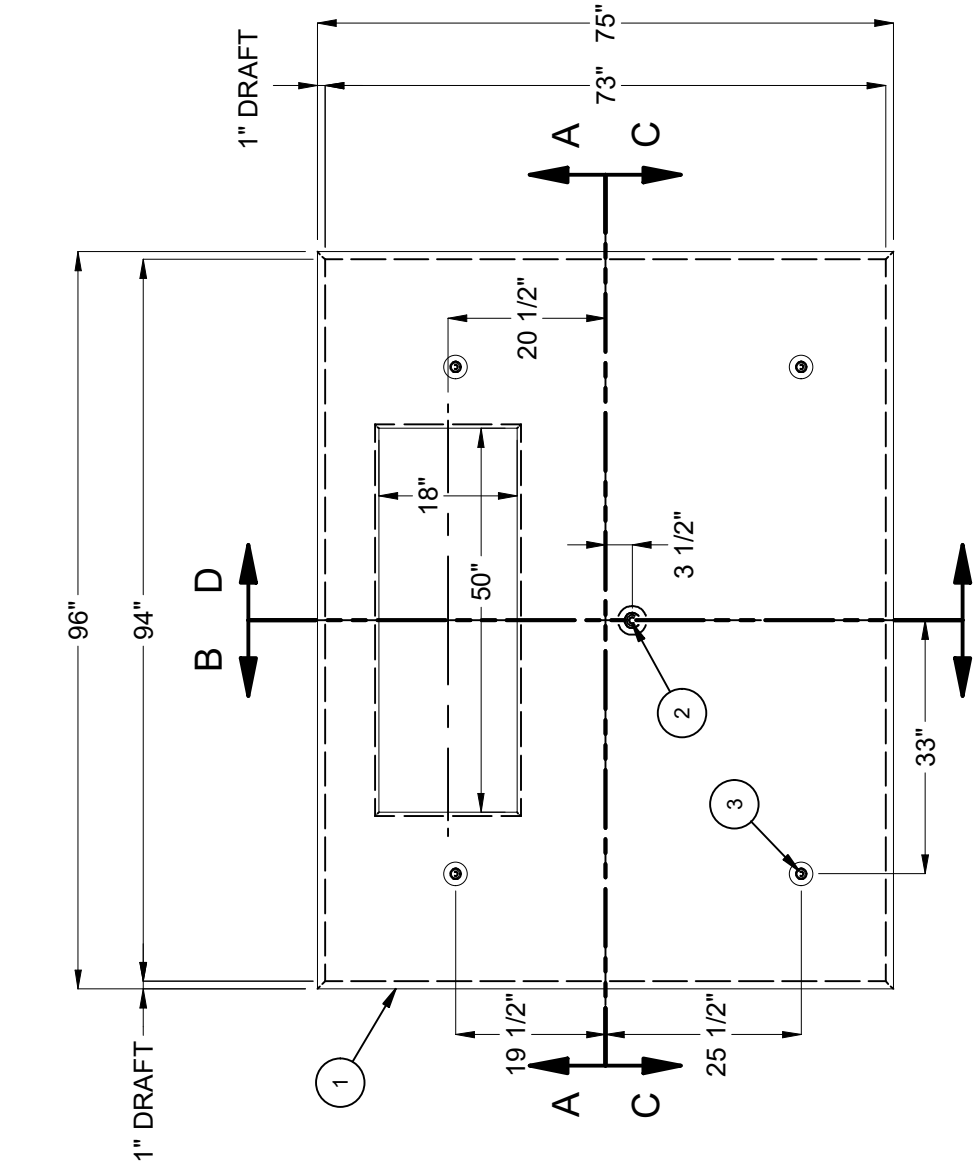


DESIGN NOTES

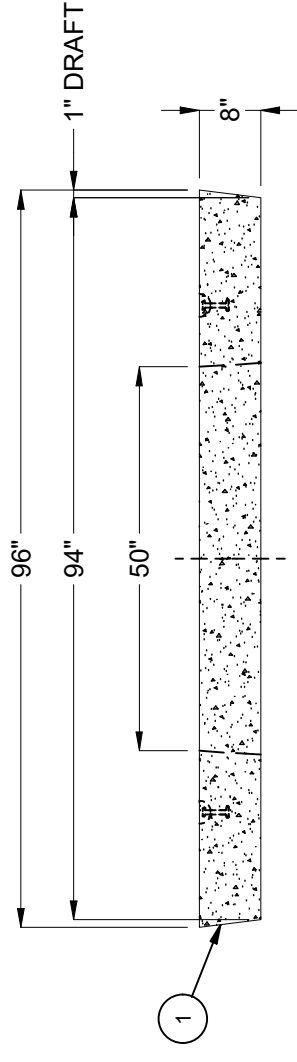
- DESIGNED IN ACCORDANCE WITH ACI 318 USING 5,500 PSI COMPRESSIVE STRENGTH CONCRETE AND 60,000 PSI YIELD STRENGTH ASTM A-706 STEEL REINFORCEMENT PER CALCS. #32085-MOD.
- PAD CONCRETE LOAD DESIGNATION A-0.3 (300 PSF) PARKWAY LOADING.
- ALL PARTS TO BE STENCILED: MFG DATE / JOB NUMBER / PRODUCT ID / WEIGHT.

BILL OF MATERIALS

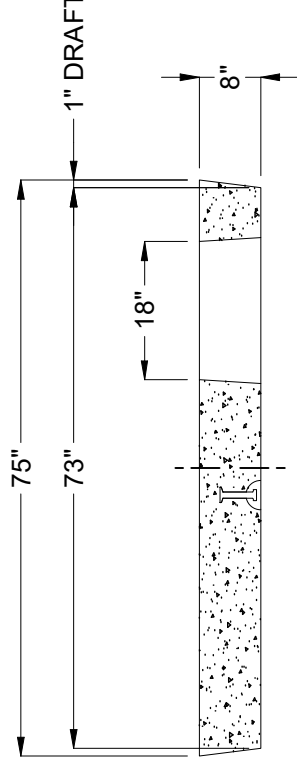
ITEM	UNIT QTY	QTY	PART NUMBER	DESCRIPTION
1	28.194 ft ³	28.194 ft ³	100024079	CONCRETE #19 SCC
2	1	1	100002874	ANCHOR DOGBONE P52 4T X 4-3/4" GALV
3	1	4	100002867	ANCHOR DOGBONE P52 2T X 3-3/8" GALV
4	1	1	100018131	REINFORCING MAT 100018131



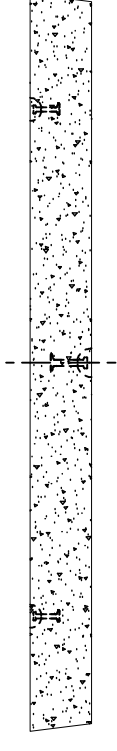
PLAN VIEW



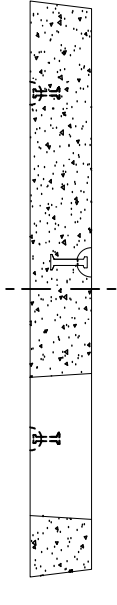
SECTION A-A



SECTION B-B



SECTION C-C

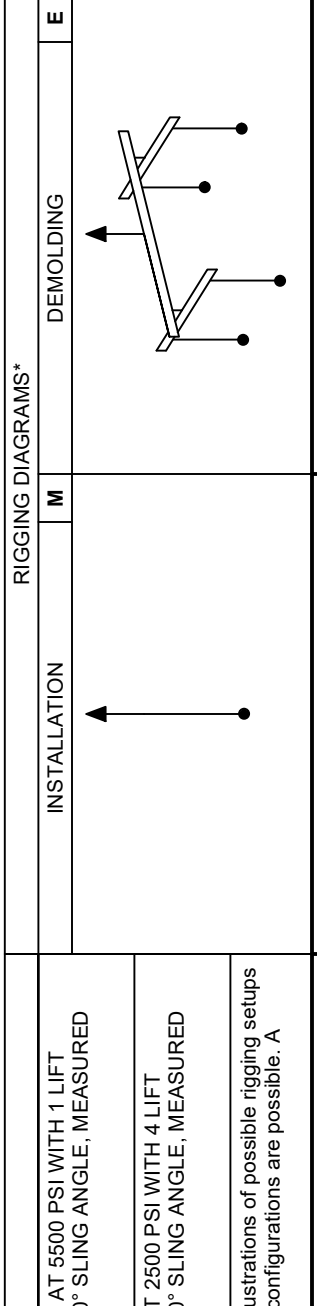


SECTION D-D

LIFTING NOTES

- INSTALLATION: THIS CONCRETE PRODUCT IS DESIGNED TO BE LIFTED AT 5500 PSI WITH 1 LIFT CONNECTIONS EQUALLY LOADED TO 1 LIFTING POINTS AT A MINIMUM 90° SLING ANGLE, MEASURED FROM HORIZONTAL.
- DEMOLDING: THIS CONCRETE PRODUCT IS DESIGNED TO BE LIFTED AT 2500 PSI WITH 4 LIFT CONNECTIONS EQUALLY LOADED TO 4 LIFTING POINTS AT A MINIMUM 90° SLING ANGLE, MEASURED FROM HORIZONTAL.

*All rigging shall be design by a qualified professional. Loading diagrams show illustrations of possible rigging setups to achieve the required sling angle and load leg equalization. Other valid rigging configurations are possible. A qualified professional must be consulted prior to lifting.



BURY DEPTH:	-0.3' - 0.3' to Top
WATER LEVEL:	Below Structure
APPROX. WEIGHT:	4239.73 Lbs
DESIGN SPEC:	ACI 318, ASTM C857
LOADING SPEC:	A-03 (300 psf)
REINFORCEMENT TYPE:	Rebar
LIFTING TYPE:	Dogbone

©2024 Jensen Precast-All rights reserved. All materials appearing as Jensen Precast documents and the like are proprietary work product and are protected under U.S. copyright and other laws. Unless in conjunction with business conducted with Jensen Precast, any use of Jensen Precast work product without express, written consent is prohibited, and recipient is prohibited from distributing any and all work product to non-approved third parties under penalty of civil action.

REVISION HISTORY

REV	DESCRIPTION	DATE	APPROVED
C-1	REVISED B.O.M	3/13/2024	

DESCRIPTION:	Pad 7394x8 18"x50"E IID
REV:	C-1
PART NUMBER:	100012423
CASTING LAYOUT	
DRAWN BY:	S. Woods
MODIFIED:	3/8/2024
CREATED:	3/8/2024
SHEET:	1 OF 2