

8'-0" x 8'-0" 1000 KVA TO 2500 KVA TRANSFORMER PAD x 8" THICK

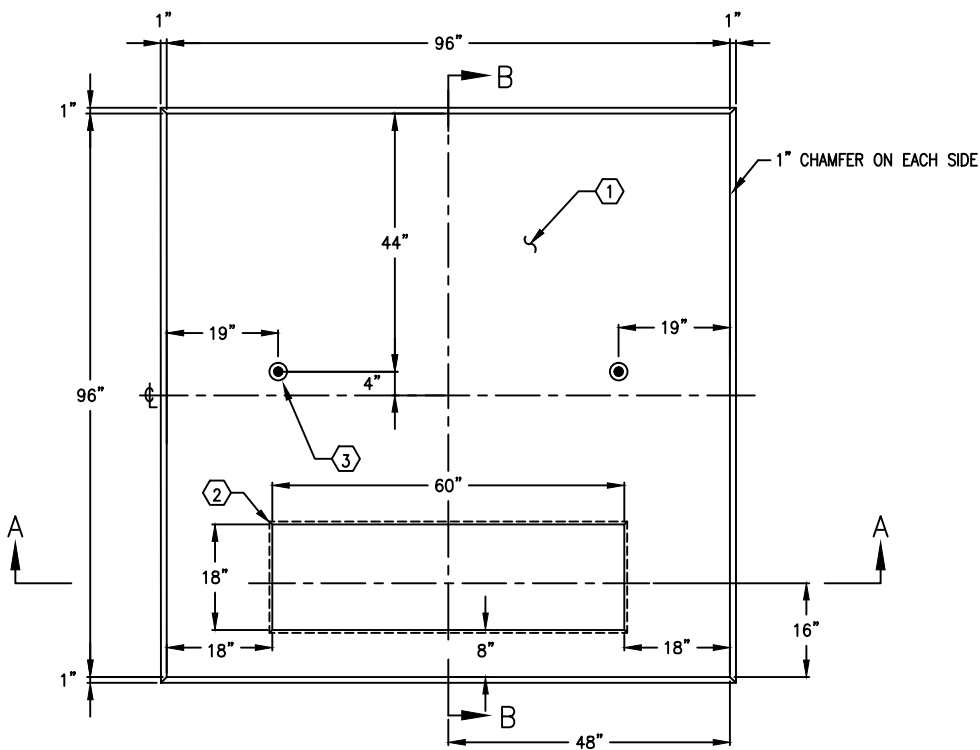
NOTES:

- TRANSFORMER PAD DESIGNED USING 5,500 PSI [37.92MPa] COMPRESSIVE STRENGTH CONCRETE AND 60,000 PSI [413.2MPa] YIELD STRENGTH GRADE 60 A-706 STEEL REINFORCEMENT PER.
- TRANSFORMER PAD TO BE STENCILED, "JENSEN PRECAST", AND "DATE OF POUR"

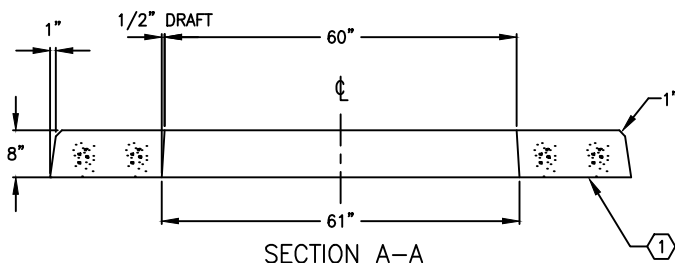
1. PD9696-T8-25, 8" TRANSFORMER PAD. (CG-PD9696-T8-25) W.T 5740#.
2. 18" x 60" OPENING (1) TABLE MOUNTED.
3. (2) 2 TON RISS X 3 3/8" GALV. SL ANCHORS (55-20-203)

ORDERING INFORMATION:

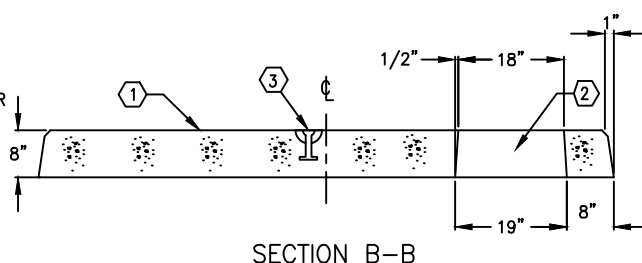
PD9696-T8-25 FOR PAD AS SHOWN.
 PER I.I.D. SPEC.
 TOTAL WT. 5740#.



PLAN VIEW



SECTION A-A



SECTION B-B



AUTOCAD REL 14

#	DATE	DESCRIPTION	BY
E	12-01-03	GENERAL REVISION	YK
F	01-30-08	CHANGE CABLE OPENING TO 18"x60"	DRG

PD9696-T8-25

PER I.I.D. ??? Rev.03 06-11-03

3-6-89