

# 2'-0" x 3'-0" PAD MOUNT SWITCH ENCLOSURE x 36" DEEP

## MATERIAL LIST K2436-PUV36-11

ITEM PART NO.	DESCRIPTION	REBAR NO. /LOCATE	MOUNT/ WEIGHT
1	PB2436D-B30-05	CG-MAT-2436 (482)	2,000 lbs
		CG-LOOP3-2436 (470)	
		CG-PD2436-P-11	1,100 lbs
2	PD2436-P-11		(1) REQ'D
3	SC2436-PUV11	BOTTOM SECTION	(1) CORE
4	KNOCK OUT	BOTTOM SECTION	(2) CORE
5	KNOCK OUT		
		BOTTOM SECTION	(4) SHELL
6	KNOCK OUT		
		BOTTOM SECTION	(2) CORE
7	KNOCK OUT		
		BOTTOM SECTION	(10) CORE
8	55-10-424	BOTTOM SECTION	(2) CORE
9	55-35-09	PMH PAD	(8) TABLE
10	55-10-422	BOTTOM SECTION	(4) CORE
11	55-20-203	PMH PAD	(4) RAIL
12	55-10-830		

### NOTES:

■ DUCTED PULL BOX DESIGNED FOR H-20-44 TRAFFIC LOADING USING 5,500 PSI [37.92MPa] COMPRESSIVE STRENGTH CONCRETE AND 60,000 PSI [413.2MPa] YIELD STRENGTH ASTM A-706 REINFORCING STEEL PER CALCS. #30598.

■ PMH PAD DESIGN PER EDISON SPECIFICATION

■ ENCLOSURE TO BE PLACED ON A 6" BASE OF CRUSHER RUN FOR EVEN LOAD DISTRIBUTION AND EASE OF INSTALLATION.

■ CONCRETE MIX USED IN POURING THIS PRODUCT SHALL US FLY ASH AS AN ADMIXTURE.

### FOLLOWING TO BE SHIPPED WITH PMH PAD:

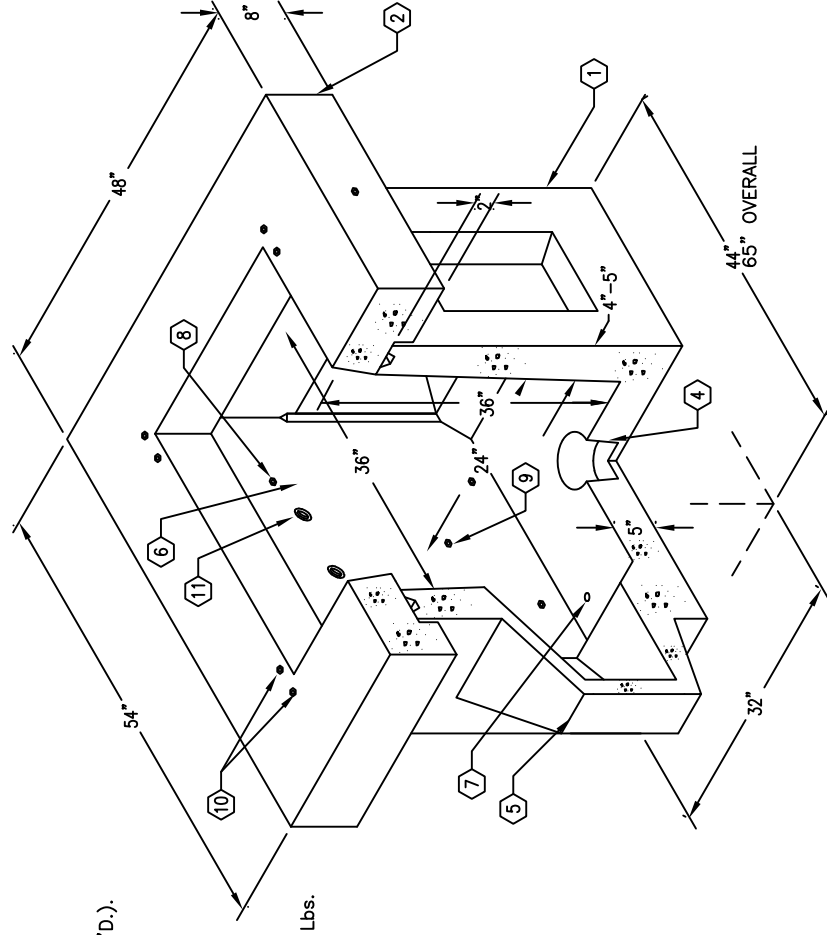
- (a) SC2436-PUV11 TEMPORARY COVER (1 REQ'D.).
- (b) 1/2" x 2 1/2" PENTA-HEAD STAINLESS STEEL BOLTS (4 REQ'D.).
- (c) 1/2" x 2 1/2" HEX HEAD PLATED BOLT (4 REQ'D.).

### ORDERING INFORMATION:

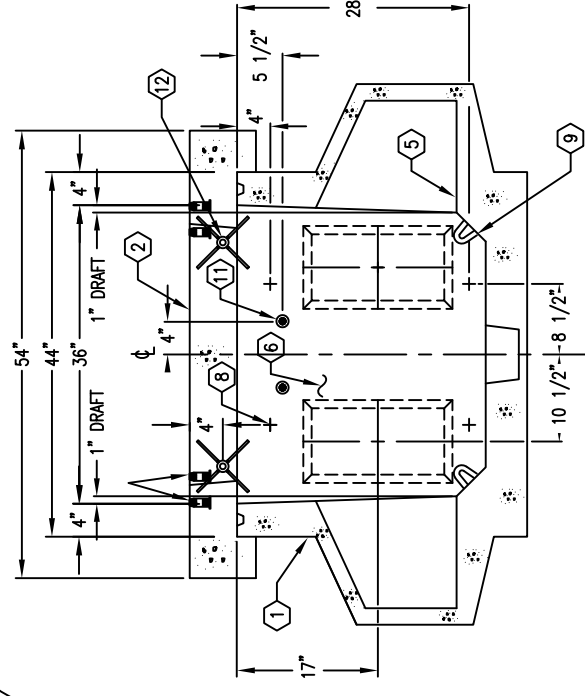
K2436-PUV36-11 FOR ASSEMBLY AS SHOWN.

PER EDISON SPEC. UGS S592, PH-3

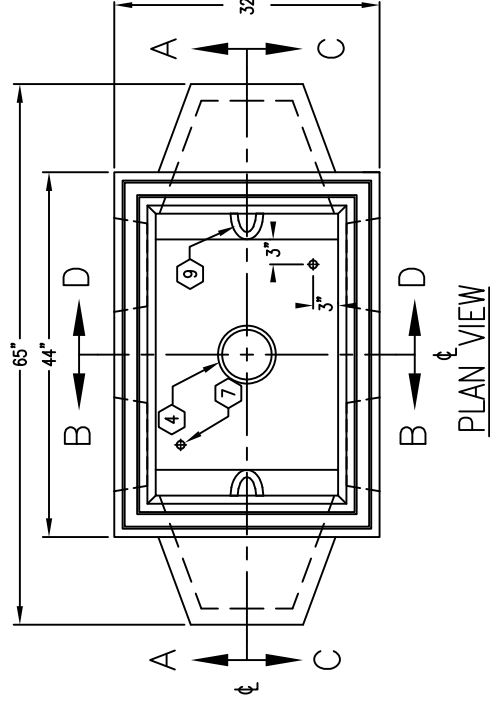
TOTAL WEIGHT OF ASSEMBLY AS SHOWN IS 3,095 Lbs.



MINIMUM EXCAVATION SIZE:  
3'-8" x 6'-4" x DEPTH REQ'D.

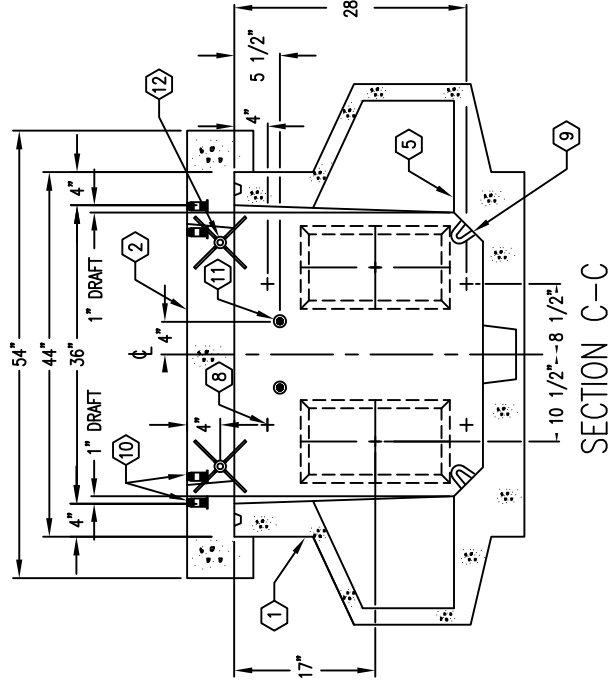


SECTION A-A

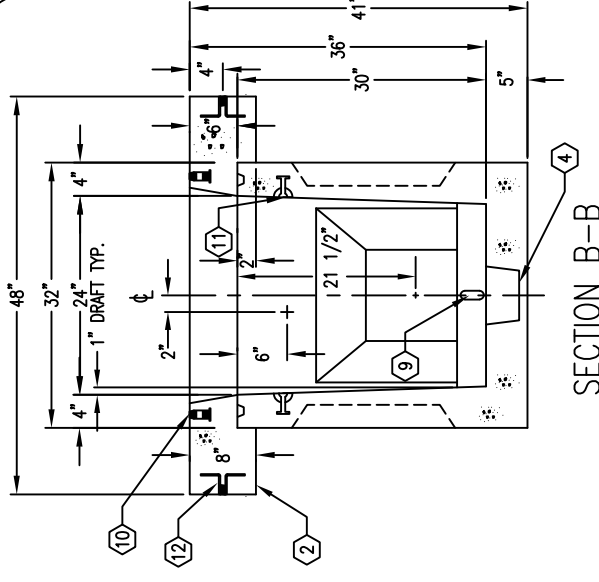


PLAN VIEW

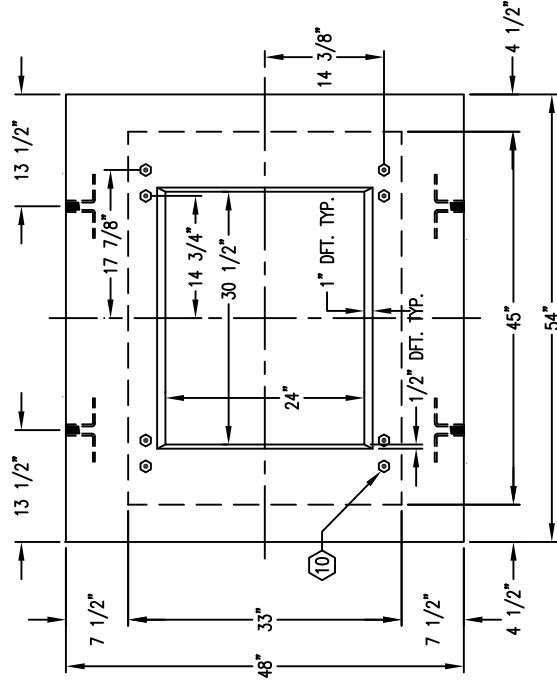
NOTE: PAD NOT SHOWN  
IN THIS VIEW FOR CLARITY.



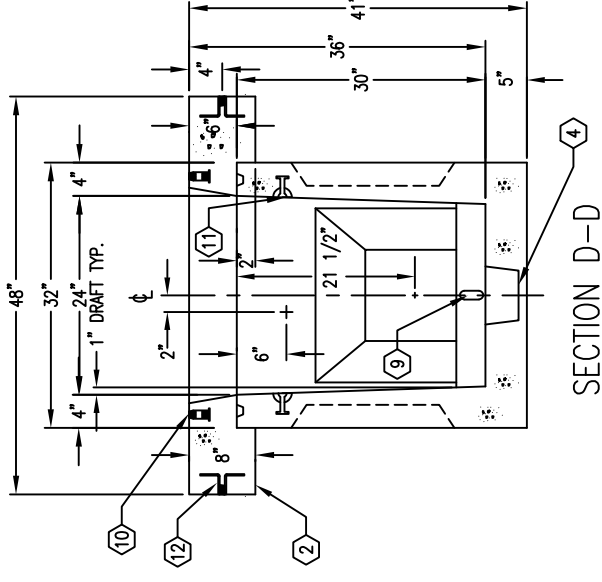
SECTION C-C



SECTION B-B



PLAN VIEW OF PAD



SECTION D-D