

4'-0" x 4'-0" VAULT NECK WITH CONCRETE COVER

NOTES:

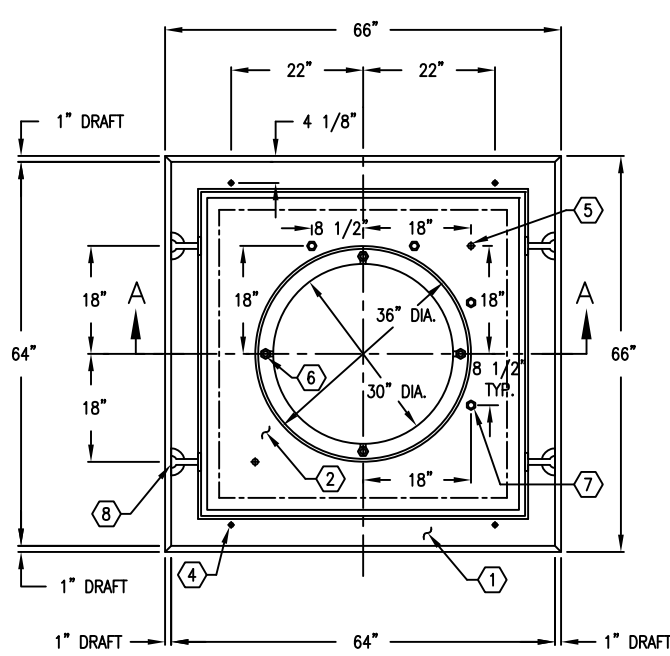
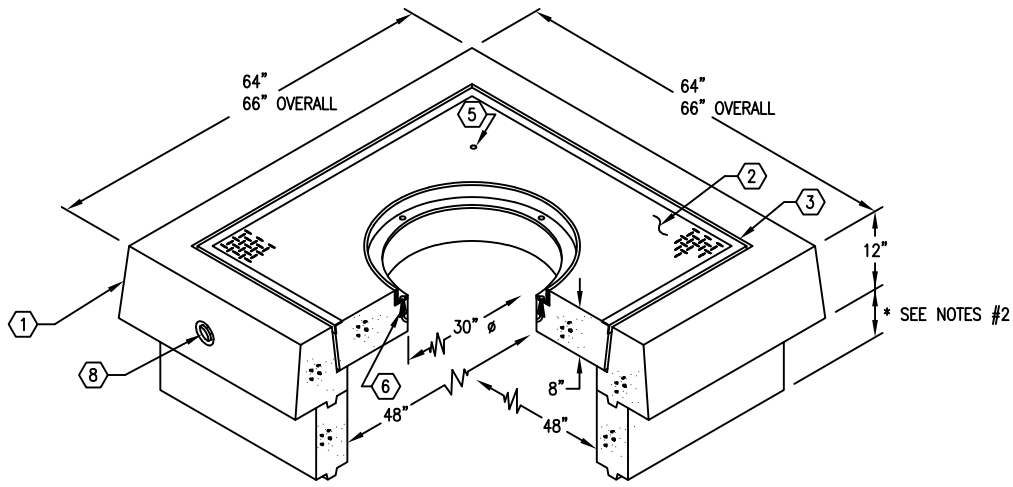
DESIGNED IN ACCORDANCE WITH AASHTO H-20-44 TRAFFIC LOADING USING 5,500 P.S.I. COMPRESSIVE STRENGTH CONCRETE AND 60,000 P.S.I. YIELD STRENGTH GRADE 60 A-706 STEEL REINFORCEMENT PER CALCS. #31635.

*EXTENSIONS ARE AVAILABLE IN THE FOLLOWING SIZES:
 A) VN44-R6, 6" EXTENSION SECTION (CG-VN44-R6). WT. 800 lbs.
 B) VN44-R9, 9" EXTENSION SECTION (CG-VN44-R9). WT. 1,200 lbs.
 C) VN44-R12, 12" EXTENSION SECTION (CG-VN44-R12). WT. 1,600 lbs.

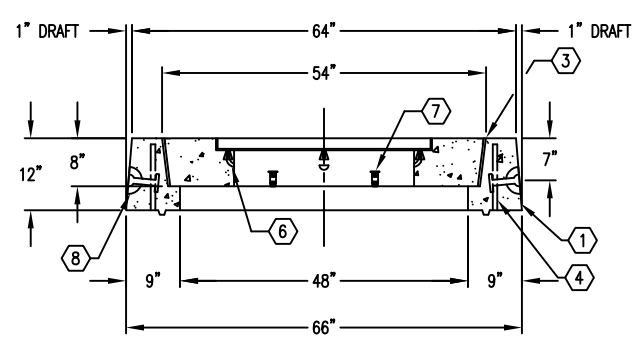
ORDERING INFORMATION:

K44-VN12-05 FOR ASSEMBLY AS SHOWN.
 TOTAL WEIGHT FOR ASSEMBLY AS SHOWN IS 3,175 lbs.

1. VN44-N12-05, 12" NECK SECTION (CG-VN44-N12-05). WT. 1,625 lbs.
2. VN44-T8-056, 8" COVER SECTION W/CAST-IN R-1581 RING, SURFACE TO BE DIAMOND PLATE IMPRINT (CG-VN44-T8-056). WT. 1,550 lbs.
3. 3/8" x 8" EXPANDED FELT.
4. 3/4" COIL THREADED ADJUSTING BOLT x 11" LONG. LOCATE AS FOLLOWS: NECK SECTION (4) TONGUE FORMER MTD.
5. 1" DIAMETER THRU HOLE. LOCATE AS FOLLOWS: COVER SECTION (2) TABLE MTD.
6. 1/2" P35T OPEN BTM INSERT W/ CLEAN-OUT HOLE. LOCATE AS FOLLOWS: COVER SECTION (4) A-1106 RING SURFACE MTD.
7. 1/2" STAINLESS STEEL LOOP INSERT. LOCATE AS FOLLOWS: COVER SECTION (4) CORE DECK MTD.
8. 2 TON x 3 3/8" GALVANIZED RISS HANDLING ANCHOR. LOCATE AS FOLLOWS: NECK SECTION (4) SHELL MTD.



PLAN VIEW



SECTION A-A



#	DATE	DESCRIPTION	BY
G	12-29-97	REV'D LOGO	DKH
H	07-29-03	CHG'D TO SS INSERTS	DRG

K44-VN12-05
 SECONDARY 07-28-88