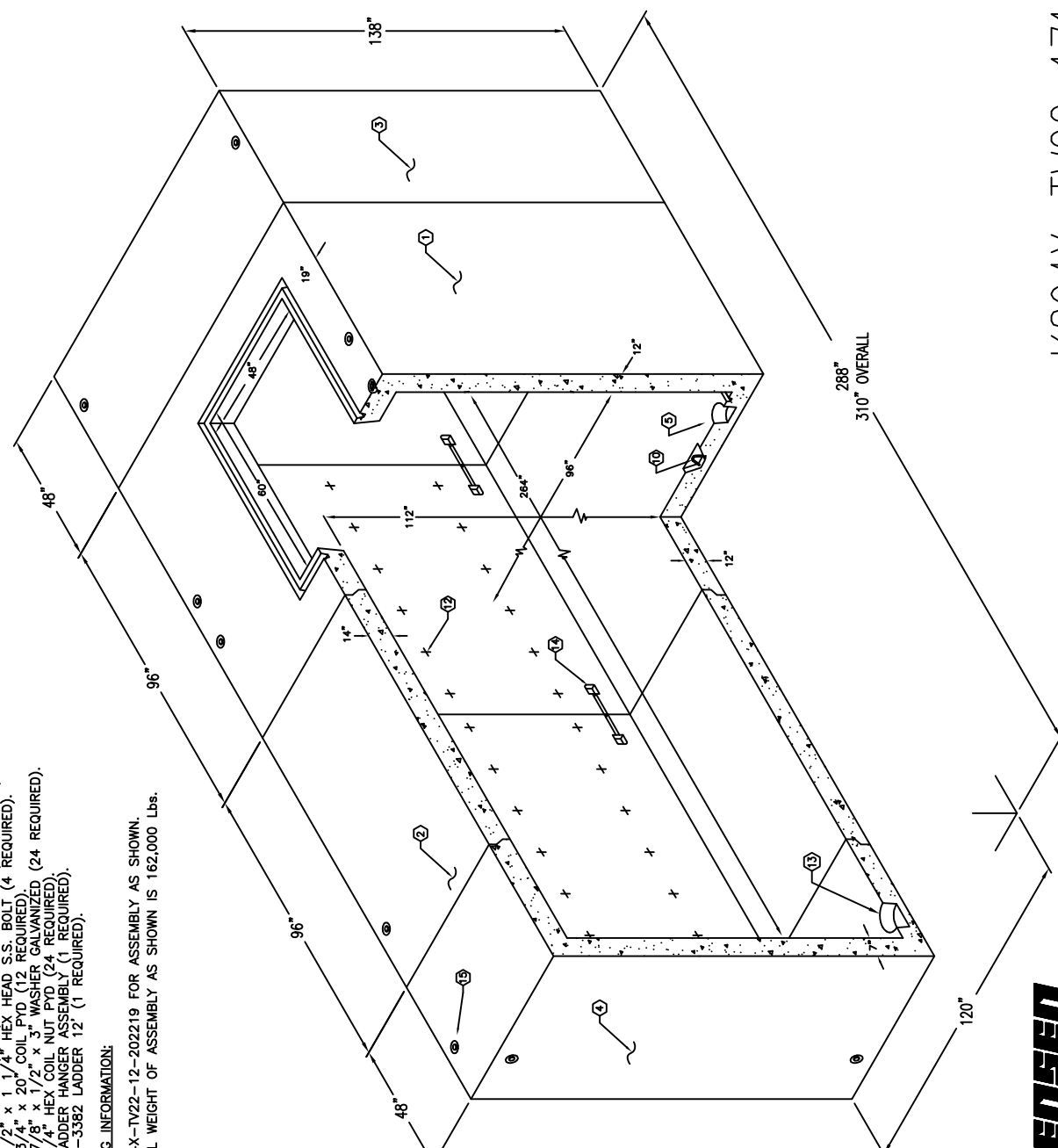


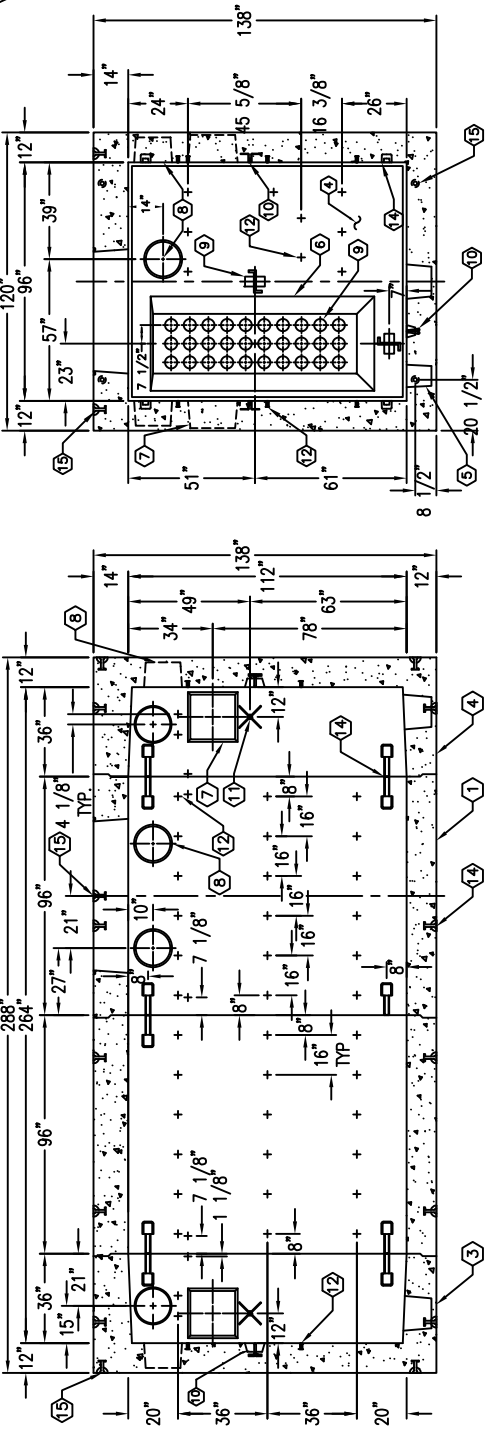
# 8'-0" x 9'-4" DUCTED TUNNEL VAULT x 22'-0" LONG

- NOTES:**
- VAULT DESIGNED IN ACCORDANCE WITH AASHTO H-20-44 TRAFFIC BRIDGE LOADING USING 5,500 PSI [37.92MPa] COMPRESSIVE STRENGTH CONCRETE AND 60,000 PSI [413.2MPa] YIELD STRENGTH ASTM A-706 STEEL REINFORCEMENT.
  - 96" EXTENSION SECTION PER CALCS. #33385.
  - 96" INTERMEDIATE SECTION AND 36" END SECTIONS PER CALCS. #32152.
  - VAULT TO BE PLACED ON 6" BASE OF CRUSHER RUN FOR EASE OF INSTALLATION AND EVEN LOAD DISTRIBUTION.
  - LIMIT OF COVER OVER ROOF SECTION IS 1'-0" TO 4'-0".
  - CONCRETE MIX USED IN POURING THIS PRODUCT SHALL USE FLY ASH AND DCA AS AN ADMIXTURE.
  - EACH CONCRETE SECTION SHALL BE MARKED ON THE INSIDE & OUTSIDE WITH "JENSEN PRECAST" THE DESIGNATION "DMP/FA-CN", AND THE DATE OF POUR.
  - EACH CONCRETE SECTION SHALL HAVE CAST-IN ON THE INSIDE "JENSEN", THE YEAR, AND THE DESIGNATION "FA-CN".
  - NO SHARP OR ROUGH EDGES ON THE TERMINATORS ENTERING THE VAULT.
  - THE FOLLOWING MATERIAL TO BE SHIPPED WITH VAULT:
    - (a) 7/8" x 1.3/4" CONEAL GASKET (135 FEET REQUIRED).
    - (b) 1.5/8" GALVANIZED UNISTRUT x 92" LONG (06-2090) W/(6) 1/2"-1.3/8" x 1.1/2" ROUND HEAD SLOTTED PLATED MACHINE SCREWS & (6) 1/2" PLATED WASHERS (6 REQUIRED).
    - (c) 1.5/8" x 1.5/8" GALVANIZED UNISTRUT x 36" LONG (06-2086) W/ SCREWS & (3) 1/2" PLATED WASHERS (2 REQUIRED).
    - (d) 1.5/8" x 1.5/8" GALVANIZED UNISTRUT x 32" LONG (06-2085) W/(2) 1/2"-1.3/8" x 1.1/2" ROUND HEAD SLOTTED PLATED MACHINE SCREWS & (2) 1/2" PLATED WASHERS (6 REQUIRED).
    - (e) 1.5/8" x 1.5/8" GALVANIZED UNISTRUT x 22" LONG (06-2084) W/(2) 1/2"-1.3/8" x 1.1/2" ROUND HEAD SLOTTED PLATED MACHINE SCREWS & (2) 1/2" PLATED WASHERS (6 REQUIRED).
    - (f) 1/2" x 1.1/4" HEX HEAD S.S. BOLT (4 REQUIRED).
    - (g) 3/4" x 20" COIL PYD (12 REQUIRED).
    - (h) 7/8" x 1/2" x 3" WASHER GALVANIZED (24 REQUIRED).
    - (i) 3/4" HEX COIL NUT PYD (24 REQUIRED).
    - (j) LADDER HANGER ASSEMBLY (1 REQUIRED).
    - (k) 1-3362 LADDER 12 (1 REQUIRED).

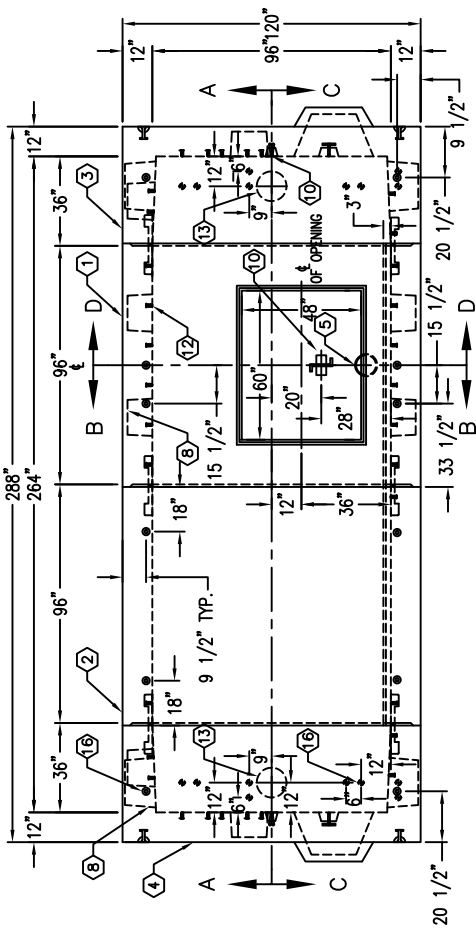
**ORDERING INFORMATION:**  
 K894X-TV22-12-202219 FOR ASSEMBLY AS SHOWN.  
 TOTAL WEIGHT OF ASSEMBLY AS SHOWN IS 162,000 Lbs.



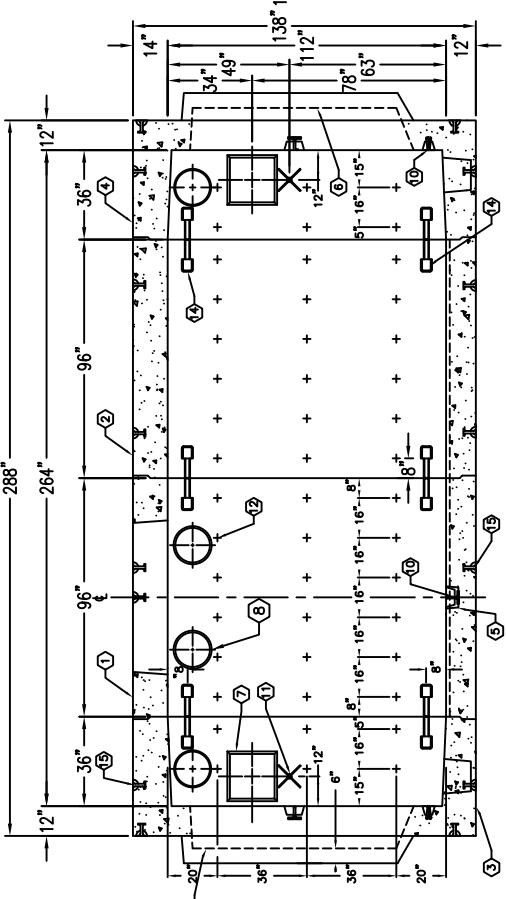
- TV894X-C96-171-12, 96" INTERMEDIATE SECTION (CG-894X-C96-171-12). WT. 45,000 lbs.
- TV894X-R96-171-12, 96" EXTENSION SECTION (CG-894X-R96-171-12). WT. 47,000 lbs.
- TV894X-E36-171-12AT, 36" END SECTION (CG-894X-E36A-171-12). WT. 35,000 lbs.
- TV894X-E36-171-12BT, 36" END SECTION (CG-894X-E36B-171-12). WT. 35,000 lbs.
- 8" DIA. x 9" DIA. SUMP x 5" DEEP (5000-346). LOCATE AS FOLLOWS: INTERMEDIATE SECTION (1) CORE MTD.
- 24" x 82" DUCTED KNOCKOUT x 12" DEEP (5000-528). DRAFT AS FOLLOWS: T=1", S1=7", S2=7", B=7". LOCATE AS FOLLOWS: END SECTION (1) EACH CORE MTD.
- 18" x 18" KNOCKOUT x 6" DEEP (5000-351). DRAFT 1" TYPICAL ALL SIDES. LOCATE AS FOLLOWS: END SECTION (2) EACH CORE MTD.
- 14" DIA. x 15" DIA. VENT KNOCKOUT x 5" DEEP (5000-361). LOCATE AS FOLLOWS: INTERMEDIATE SECTION (4) CORE MTD., END SECTION (2) EACH CORE MTD.
- 5" DIA. CONTERM (5563 G). LOCATE AS FOLLOWS: END SECTION (30) EACH SURFACE MTD.
- 7/8" DIA. x 4 1/2" GALVANIZED PULL IRON WITH LEGS (05-2140). LOCATE AS FOLLOWS: INTERMEDIATE SECTION (1) CORE MTD.; END SECTION (2) EACH CORE MTD.
- 1.1/2" GALVANIZED COIL THREADED INSERT. LOCATE AS FOLLOWS: END SECTION (2) EACH CORE MTD.
- 1.1/2" PLASTIC INSERT. LOCATE AS FOLLOWS: INTERMEDIATE SECTION (38) CORE MTD.; EXTENSION SECTION (38) CORE MTD.; END SECTION (17) EACH CORE MTD.
- 12" DIA. KNOCKOUT. LOCATE AS FOLLOWS: END SECTION (2) EACH CORE MTD.
- 950 BOLT-UP CASTING (950-118) W/ RECESS (950-214). LOCATE AS FOLLOWS: INTERMEDIATE SECTION (8) CORE MTD.; END SECTION (8) CORE MTD.; END SECTION (4) EACH CORE MTD.
- 8 TON x 13 3/8" GALVANIZED RISS FOR HANDLING. LOCATE AS FOLLOWS: CENTER SECTION (6) SHELL MTD.; EXTENSION SECTION (12) SHELL MTD.; END SECTION (2) EACH SHELL MTD.; (4) EACH SURFACE MTD.
- 2" DIA. TERMS W/1" DIA. GROUND ROD KNOCKOUT. LOCATE AS FOLLOWS: END SECTION (6) EACH CORE MTD.



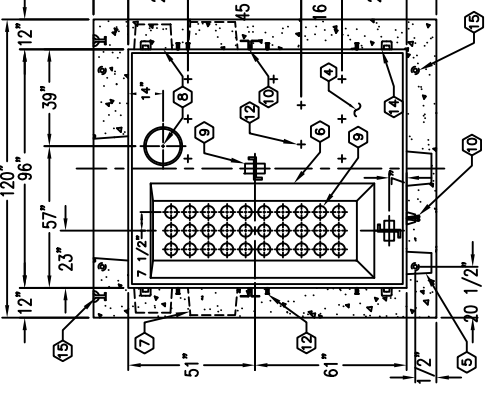
SECTION A-A



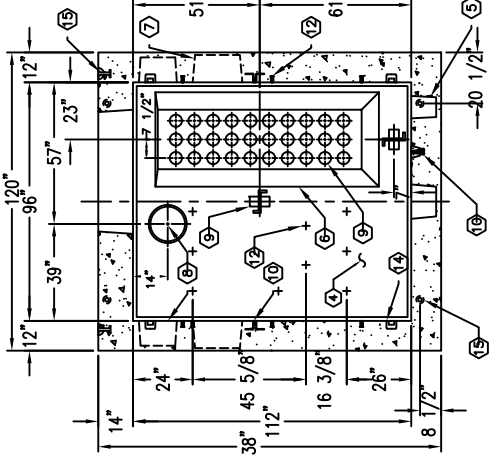
PLAN VIEW



SECTION C-C



SECTION B-B



SECTION D-D

DATE	DRAWN BY	CHECKED BY			
01-06-15	LSCHENBERY				
#	DATE	DESCRIPTION	REVISION	BY	CHK
A	01-12-15	REVISED END-SECTIONS #13-#16		JS	



K894X-TV22-171-12



AUTOCAD 2005

PER LAD.W.P. SPEC. H-171, G-4, R33

PER LAD.W.P. SPEC. H-171, G-4, R33

K894X-TV22-171-12