

8'-0" x 20'-0" TRANSMISSION VAULT x 9'-4" DEEP

MATERIAL LIST-K820T-FV112-11

ITEM PART NO.	DESCRIPTION	CAGE NO./ LOCATE	WEIGHT/ MOUNT
1	UV820T-B56-11	CG-820-B56-11(18)	46,073 lbs
2	UV820T-156-11	CG-820-156-11(19)	45,004 lbs
3	SUMP K.O. 13"x 14" DIA. SUMP x 6" DEEP w/ RECESS FOR 15" DIA. X 1/4" POLYMER SUMP COVER	BOTTOM SECTION	(1) CORE
4	55-30-62	BTM & TOP SECTION	(24) CORE
5	22-30-01	TOP SECTION	(4) CORE
6	55-10-855	BOTTOM SECTION	(6) CORE
7	55-10-425	BTM & TOP SECTION	(2) CORE
8	21-48-00	BTM & TOP SECTION	(6) WALL MTD
9	55-20-806	BOTTOM SECTION	(4) CORE
10	55-20-813	BTM & TOP SECTION	(4) SURFACE
11	21-228-9H	BTM & TOP SECTION	(2) WALL MTD
12	55-10-850	TOP SECTION	(6) CORE
13	55-10-422	TOP SECTION	(4) CORE
14	55-10-424	BTM & TOP SECTION	(30) CORE

NOTES:

- VAULT DESIGNED IN ACCORDANCE WITH AASHTO H 20-44 TRAFFIC BRIDGE LOADING.
- CONCRETE COMPRESSIVE STRENGTH SHALL BE ASSUMED TO BE 5,500 PSI [37.92MPa] @ 28 DAYS.
- YIELD STRENGTH OF THE REINFORCING STEEL SHALL BE 60,000 PSI [413.2MPa] GRADE 60 AND SHALL BE IN ACCORDANCE WITH ASTM A-706 PER CALCS. #31012.
- CONCRETE MIX USED IN POURING THIS PRODUCT SHALL USE FLY ASH AS AN ADMIXTURE.
- VAULT TO BE PLACED ON A MIN. 6" BASE OF CRUSHER RUN FOR EASE OF INSTALLATION AND EVEN LOAD DISTRIBUTION.
- LIMIT OF COVER OVER ROOF SECTION IS 1'-6" TO 4'-0".
- ALL WALLS AND CEILINGS SHALL BE PAINTED WHITE.

THE FOLLOWING MATERIAL IS TO BE SHIPPED WITH THE VAULT:

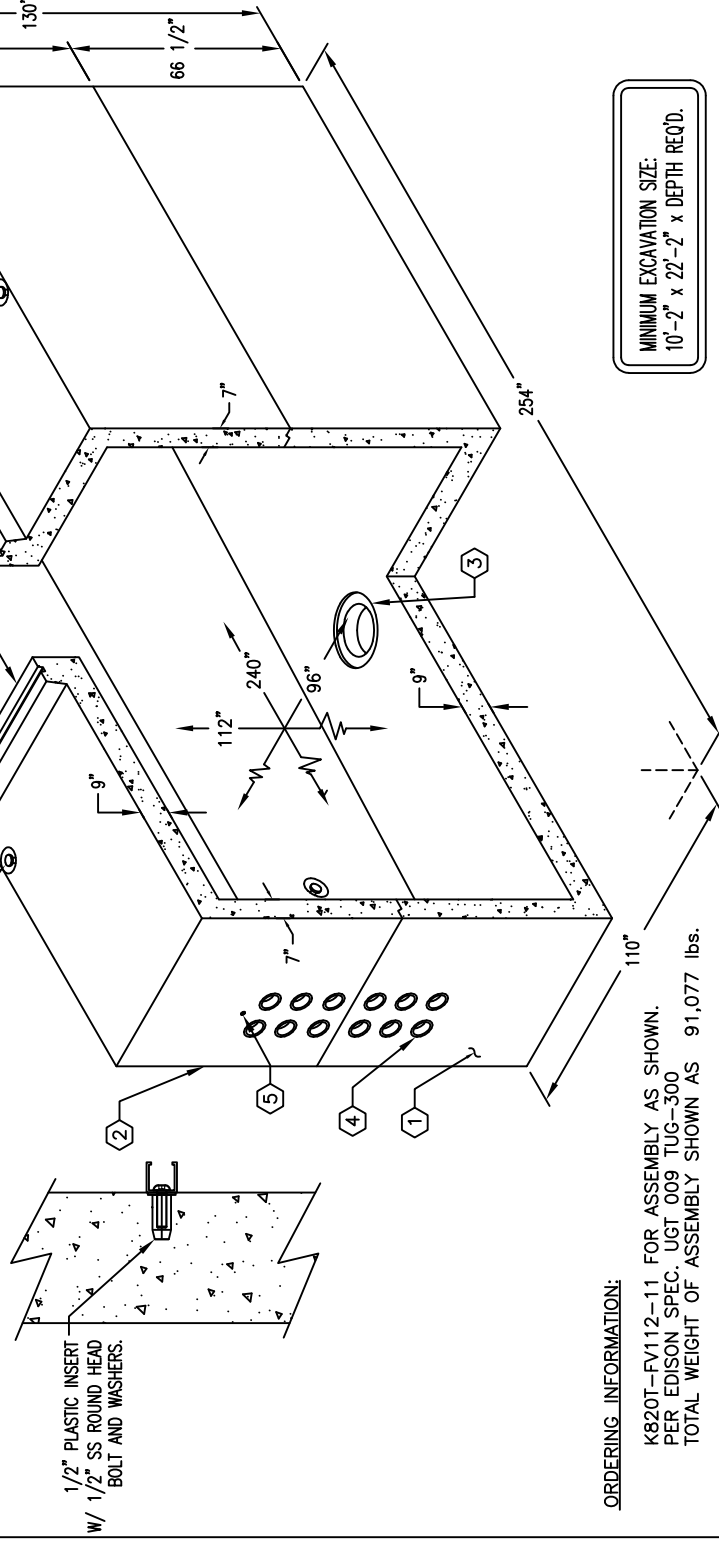
- a) 7/8" x 1 3/4" CONSEAL GASKET (90 FT. REQ'D).
- b) (12) 21-48-00, 1-5/8" x 1-5/8" UNISTRUT x 48" BOLT ON.
- c) (4) 21-228-9H, 1-5/8" x 1-5/8" UNISTRUT x 228" BOLT ON.
- d) (60) 20-10-426, 1/2" x 2" S.S. R/H MACH. SCREW.
- e) (60) 20-20-43, 1/2" S.S. WASHER
- f) BOLT 1/2" x 6" J" GALV. (4 REQ'D)

CONCRETE MIX USED IN POURING THIS PRODUCT SHALL USE FLY ASH AS AN ADMIXTURE.

VAULT TO BE PLACED ON A MIN. 6" BASE OF CRUSHER RUN FOR EASE OF INSTALLATION AND EVEN LOAD DISTRIBUTION.

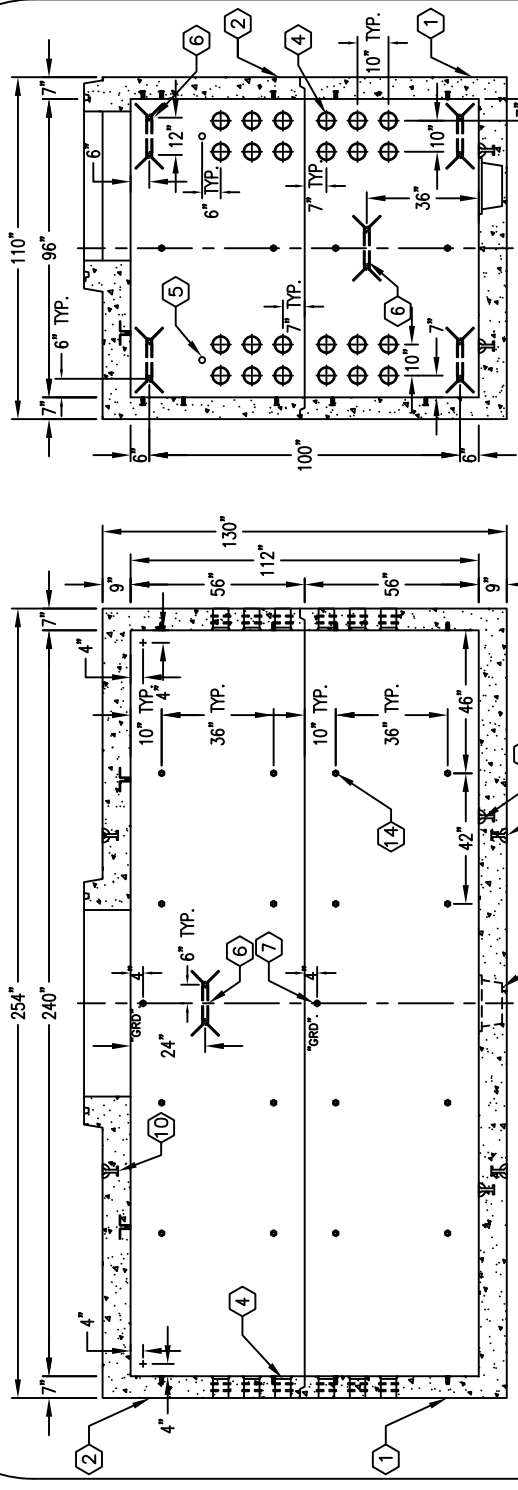
LIMIT OF COVER OVER ROOF SECTION IS 1'-6" TO 4'-0".

ALL WALLS AND CEILINGS SHALL BE PAINTED WHITE.

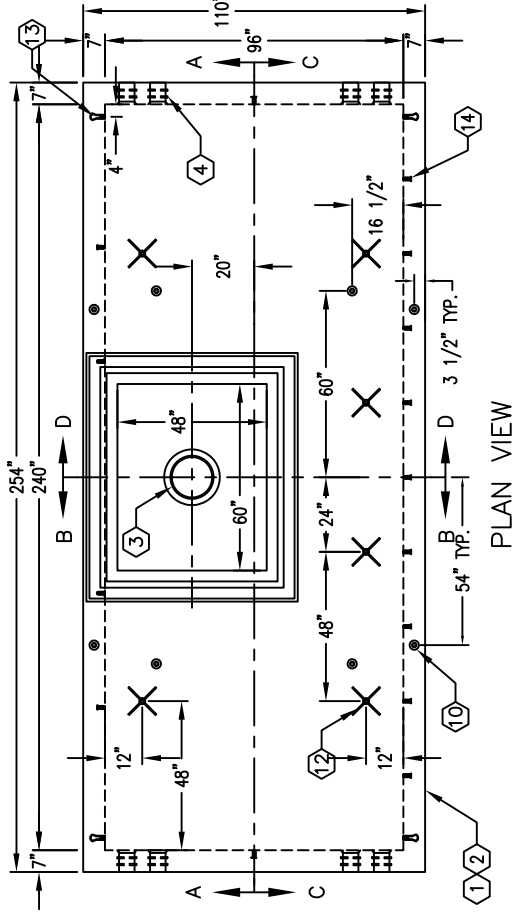


ORDERING INFORMATION:

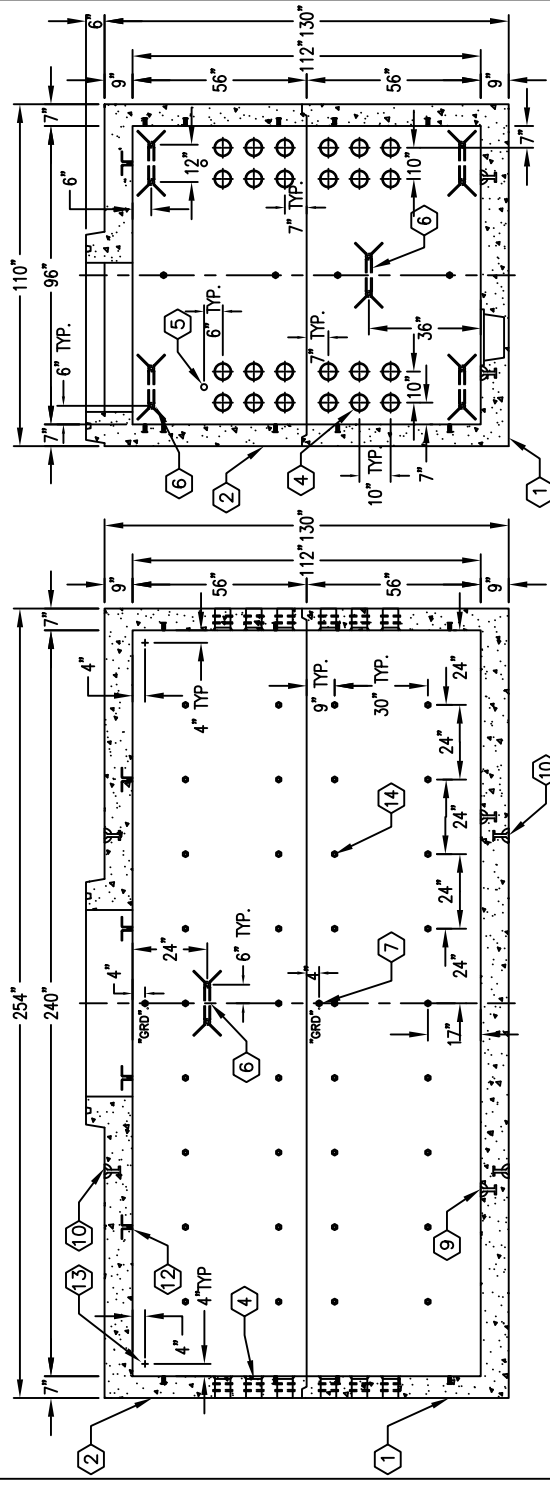
K820T-FV112-11 FOR ASSEMBLY AS SHOWN.
PER EDISON SPEC. UGT 009 TUG-300
TOTAL WEIGHT OF ASSEMBLY SHOWN AS 91,077 lbs.



SECTION A-A



PLAN VIEW



SECTION B-B

SECTION C-C

SECTION D-D

#	DATE	DESCRIPTION	BY
C	11-13-08	UPDATED PER EDISON SPEC. TUG-300	JS
B	2-19-07	ADDED INSERTS FOR "J" BOLTS & (2) DBL COIL INSERT	BB