

6'-0" x 10'-0" DUCTED PANEL VAULT x 9'-4" DEEP

NOTES:

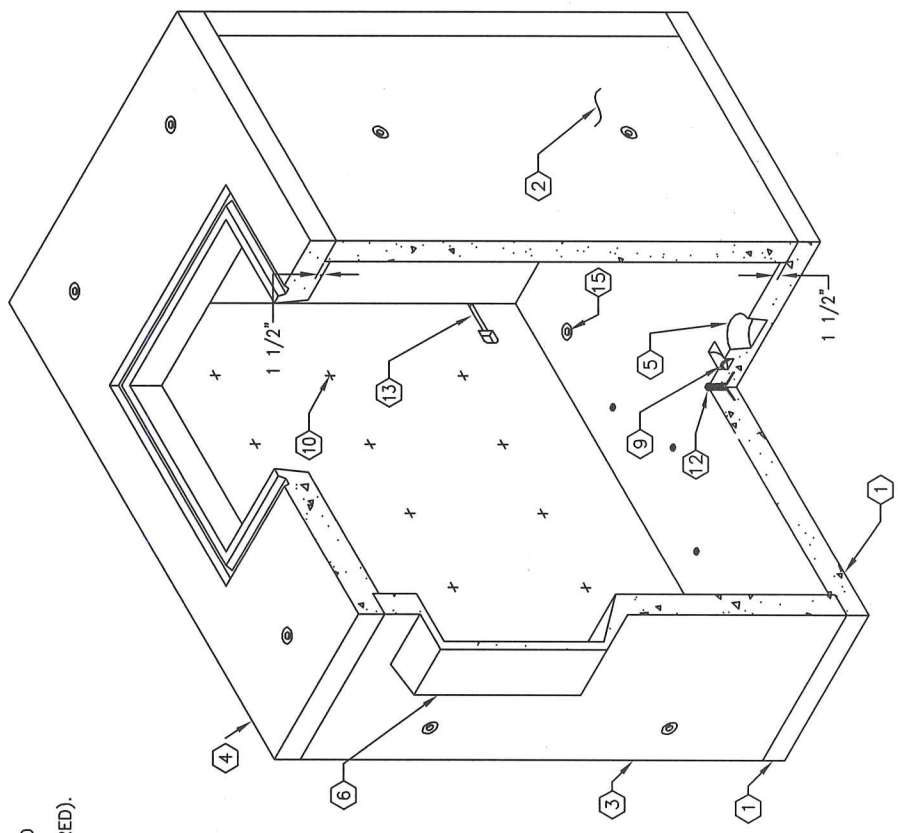
- MANHOLE DESIGNED IN ACCORDANCE WITH AASHTO H-20-44 TRAFFIC BRIDGE LOADING USING 5,500 PSI COMPRESSIVE STRENGTH CONCRETE 60,000 PSI YIELD STRENGTH ASTM A-706 STEEL REINFORCEMENT PER CALCS. #30277.
- VAULT TO BE PLACED ON A MIN. 6" BASE OF CRUSHER RUN FOR EASE OF INSTALLATION AND EVEN LOAD DISTRIBUTION.
- LIMIT OF COVER OVER TOP SLAB IS 1'-0" TO 4'-0".
- CONCRETE MIX USED IN POURING THIS PRODUCT SHALL USE FLY ASH AND DCI AS AN ADMIXTURE.
- EACH CONCRETE SECTION SHALL BE MARKED ON THE INSIDE & OUTSIDE WITH "JENSEN PRECAST" THE DESIGNATION "DWP/FA-CN" OR "DWP/F-CN-SC" IF SCC MIX USED, AND THE DATE OF POUR.
- EACH CONCRETE SECTION SHALL HAVE CAST-IN ON THE INSIDE "JENSEN", THE YEAR, AND THE DESIGNATION "FA-CN" OR "F-CN-SC" IF SCC MIX USED.
- NO SHARP OR ROUGH EDGES ON THE TERMINATORS ENTERING THE VAULT.
- PANEL VAULT SHALL BE COMPLETELY ASSEMBLED INCLUDING THE ROOF SECTION IN PLACE PRIOR TO THE PLACEMENT OF BACKFILL, UNLESS OTHERWISE SPECIFIED.

SPECIAL HANDLING NOTE: THIS CONCRETE PRODUCT IS DESIGNED TO BE LIFTED WITH 4 EQUALLY LOADED VERTICAL RIGGINGS LEGS USING A SPREADER BEAM, MIN. 60° SLING ANGLE, MEASURED FROM HORIZONTAL.

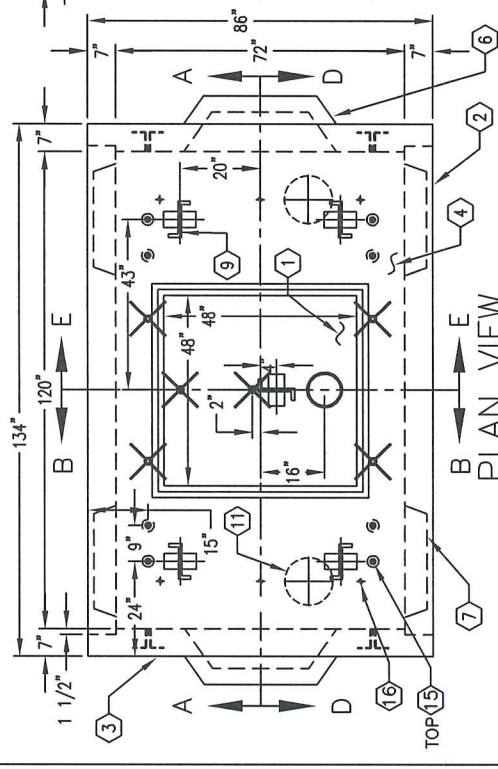
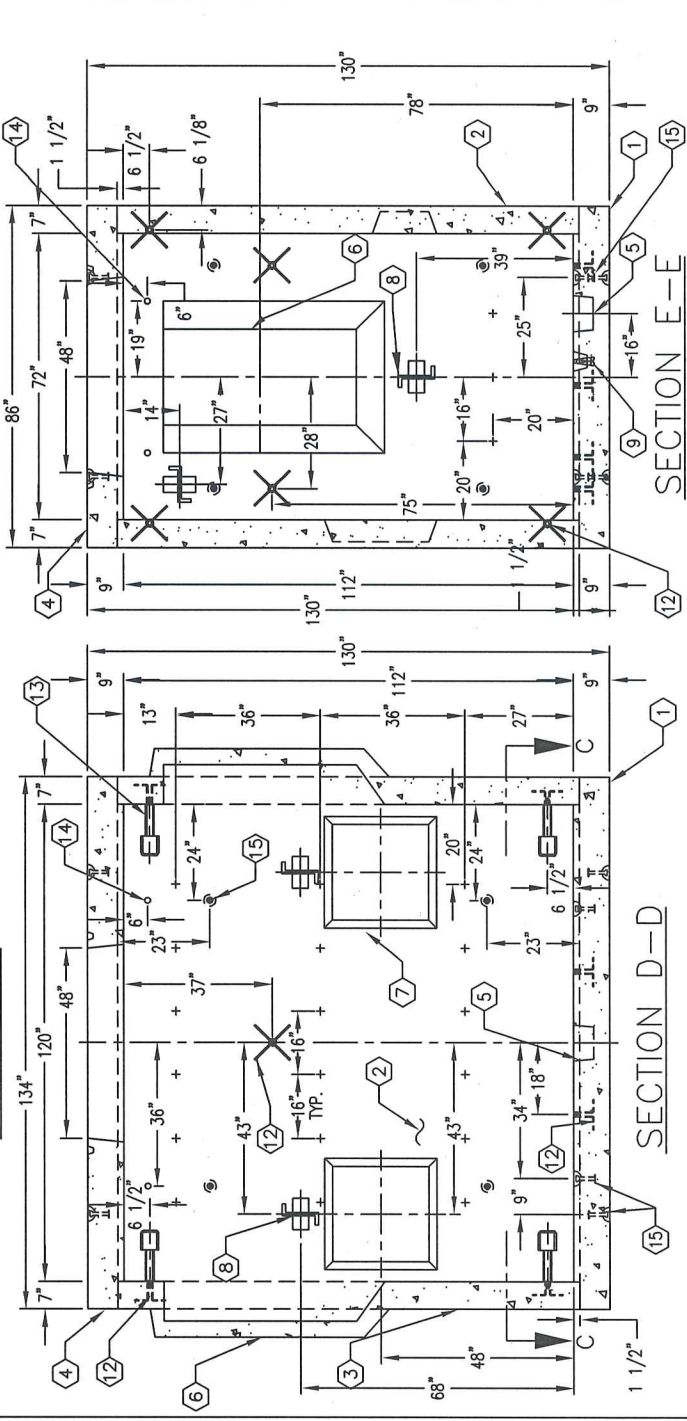
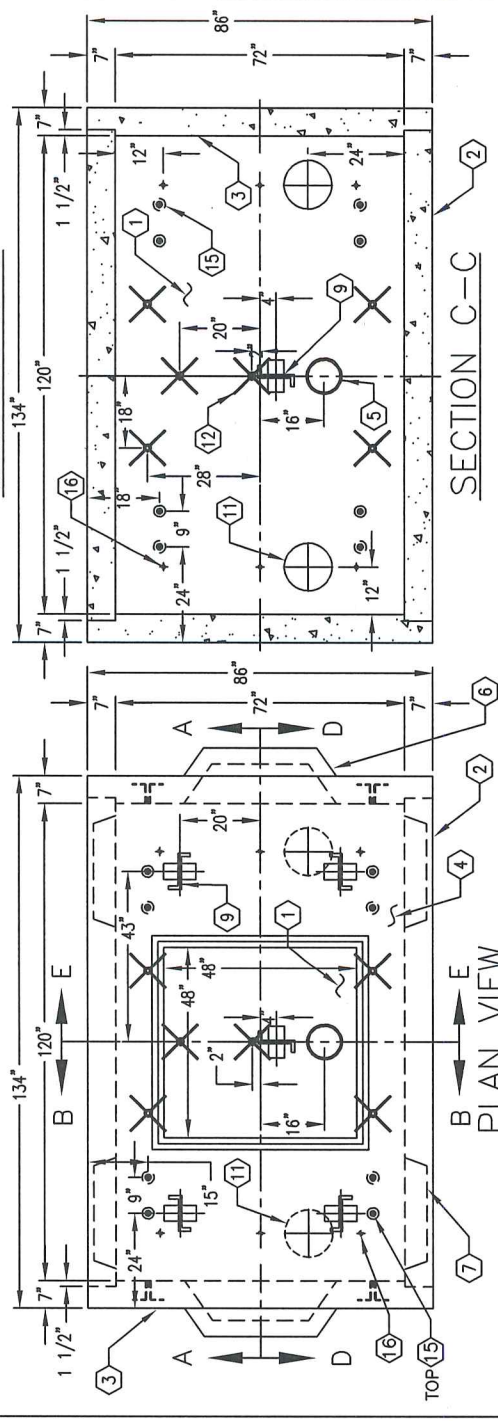
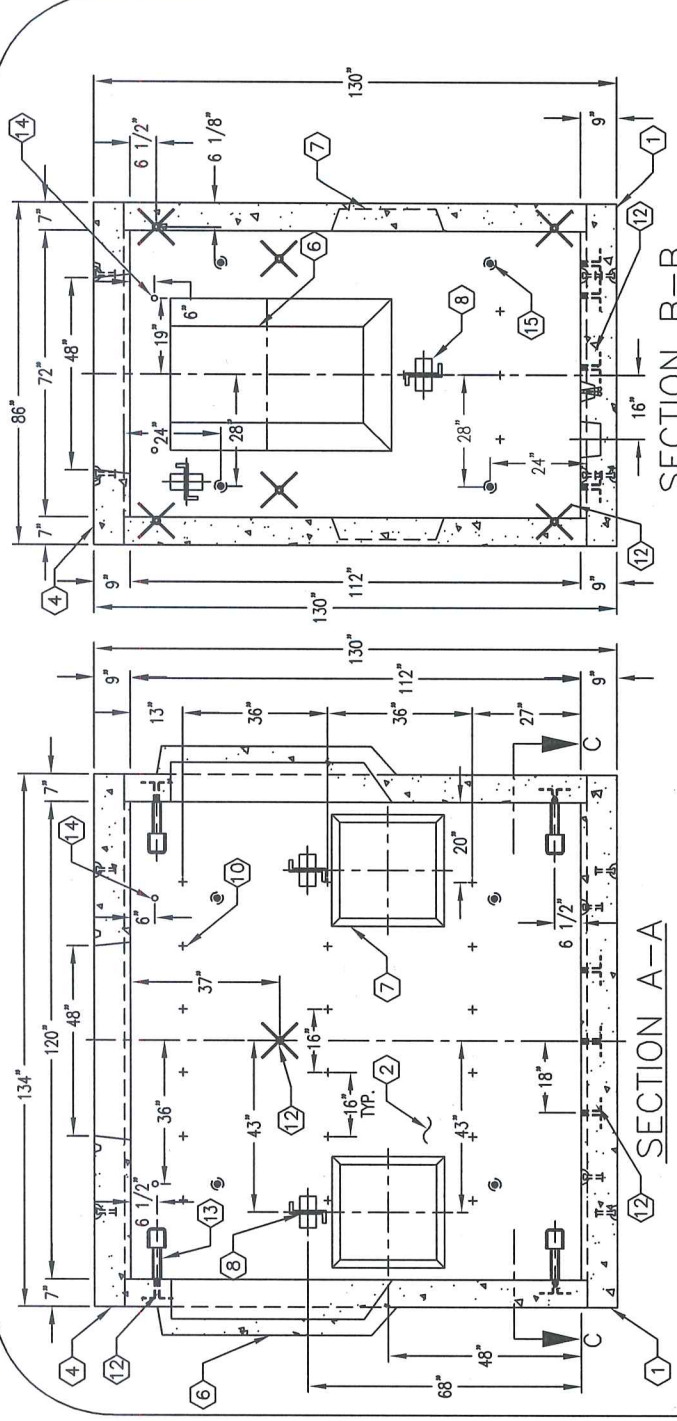
THE FOLLOWING MATERIAL IS TO BE SHIPPED WITH VAULT:

- (a) 7/8" x 1 3/4" CONSEAL (135 FT. REQUIRED)
- (b) 1 5/8" x 1 5/8" GALVANIZED UNISTRUT x 92" LONG (21-92-6H) WITH (6) 1/2"-13NC x 2" ROUND HEAD, SLOTTED, S.S. MACHINE SCREWS AND (6) 1/2" PLATED WASHERS (20-25-41), (6 REQUIRED)
- (c) 1 5/8" x 1 5/8" GALVANIZED UNISTRUT x 48" LONG (21-48-00) WITH (3) 1/2"-13NC x 1 1/2" ROUND HEAD SLOTTED S.S. MACHINE SCREWS AND (3) 1/2" PLATED WASHERS (20-25-41), (2 REQUIRED)
- (d) 3/4" x 10 1/2" COIL THREADED ROD P.Y.D. (20-10-610), (8 REQUIRED)
- (e) 3" SQ x 1/2" THK W/ 7/8" DIA. HOLE GALVANIZED WASHERS (20-25-44), (8 REQUIRED)
- (f) 3/4" HEX COIL NUT P.Y.D. (20-20-60), (8 REQUIRED)
- (g) LADDER HANGING ASSEMBLY (1 REQUIRED)
- (h) I-3382 LADDER 12' (1 REQUIRED)

- ## BILL OF MATERIALS:
- PV610-B-1254, 9" THICK BASE SLAB (CG-PV610-B-1254). WT. 9,050 lbs., 2.22 CY.
 - PV610-S73-12, 7" THICK SIDE WALL (CG-PV610-S73-12K). WT. 8,400 lbs., 2.07 CY. (2 REQ'D)
 - PV610-E44-12, 7" END WALL (CG-PV610-E44-12). WT. 6,050 lbs., 1.48 CY. (2 REQ'D)
 - PV610-T-1265, 9" TOP SLAB (CG-PV610-T-1265). WT. 7,250 lbs., 1.78 CY.
 - 8" x 9" DIA. SUMP x 5" DEEP (5000-335). LOCATE AS FOLLOWS:
 - 24" x 48" DUCTED K.O. x 10" DEEP. DRAFT AS FOLLOWS: T=0", S1=S2=7", B=7". LOCATE AS FOLLOWS: END WALL (1) EACH, TOTAL OF TWO (2) REQUIRED.
 - 24" x 24" K.O. x 5 1/2" DEEP. DRAFT AS FOLLOWS: T=2", S1=S2=2", B=2". LOCATE AS FOLLOWS: SIDE WALL (2) EACH, TOTAL OF FOUR (4) REQUIRED.
 - 7/8" DIA. x 4 1/2" GALVANIZED PULL IRON WITH LEGS (SPI-45LA). LOCATE AS FOLLOWS: SIDE WALL (2) EACH, TABLE MTD.; END WALL (2) EACH, TABLE MTD..
 - 7/8" DIA. x 4 1/2" S.S. PULL IRON WITH LEGS LOCATE AS FOLLOWS:
 - BASE SLAB (1) TABLE MTD.; TOP SLAB (4) TABLE MTD. (SPI-45LA-SS-316)
 - 1/2" PLASTIC INSERT W/ SNAP. LOCATE AS FOLLOWS: (55-10-424); SIDE WALL (18) EACH, TABLE MTD. END WALL (6) EACH, TABLE MTD.
 - 3/4" x 5" GALVANIZED COIL THRD. INSERT (55-10-650). LOCATE AS FOLLOWS: (6) EACH, TABLE MTD.; SIDE WALL (1) EACH, TABLE MTD.; END WALL (1) EACH, TABLE MTD.
 - BOLT UP CASTING (BRK-PV). LOCATE AS FOLLOWS: SIDE WALL (4) EACH, TABLE MTD.
 - 1 1/2" DIA. THRU HOLE FOR HANDLING. LOCATE AS FOLLOWS: SIDE WALL (2) EACH, TABLE MTD.; END WALL (2) EACH, TABLE MTD.
 - AS FOLLOWS: BASE SLAB (4), TABLE MTD. (4) SURFACE MTD.; ROOF SLAB (4) SURFACE MTD.; SIDE WALL (4), SURFACE MTD.; END WALL (4) SURFACE MTD.
 - 2" DIA. TERMS W/5/8" DIA. GROUND ROD KNOCKOUT (55-30-10). LOCATE AS FOLLOWS: BOTTOM SECTION (6) CORE MTD.



MINIMUM EXCAVATION SIZE:
8'-2" x 13'-4" x DEPTH REQ'D.



#	DATE	DESCRIPTION	BY
M	08-22-18	ADD PI PER LADWP	EO
L	08-04-18	REMOVE OPTIONAL KO FOR THIS STD	EO