

**NOTES:**

- STANDARDS. AASHTO LRFD BRIDGE DESIGN SPECIFICATIONS, 8TH EDITION, WITH 2022 CALTRANS AMENDMENTS, CITY OF LOS ANGELES BUREAU OF ENGINEERING STANDARD PLAN S-601, LATEST, MANUAL PART H, LADWP P 178, ASTM C-857. STRUCTURAL CALCS FOR BOX: #83718B.
- MATERIAL. CONCRETE, F<sub>c</sub>=5,500 PSI. MIX TO INCLUDE FLY ASH AND DCI. REINFORCEMENT PER ASTM A-706, F<sub>y</sub>=60,000.
- LOADS. VERTICAL LIVE LOAD: AASHTO HL-93. LIVE LOAD SURCHARGE: PER LA BOE PART H, FIGURE H 374.2A. MINIMUM 80 PSF (TO BOTTOM OF VAULT) OR LADWP P 178 (104 PSF). SOIL LATERAL LOADS: 40 PCF (DRY), 81 PCF (SATURATED). SATURATED SOIL CONDITIONS 3'-0" BELOW GRADE. SOIL BEARING CAPACITY = 1,500 PSF. DESIGN SOIL DENSITY IS 120 PCF.
- LOADS NOT INCLUDED. DESIGN DOES NOT INCLUDE COOPER E-80 RAILROAD LOADS OR LATERAL OR SURCHARGE LOADS THAT ARE PRODUCED BY FOOTING OR FOUNDATIONS ADJACENT TO THE STRUCTURE. THIS SUBSTRUCTURE SHALL BE KEPT AT LEAST IN A 1:1 RATIO AWAY FROM ALL FOOTINGS AND FOUNDATIONS, UNLESS THE ENGINEER OF RECORD APPROVES IN WRITING.
- INSTALLATION. VAULT TO BE PLACED ON WELL COMPACTED SOIL WITH MIN. 6" DEPTH OF TAMPED CRUSHED AGGREGATE BASE FOR EASE OF INSTALLATION AND EVEN LOAD DISTRIBUTION USING A VIBRATORY PLATE COMPACTOR IN A MIN. OF TWO PASSES. BASE TO EXTEND 12" BEYOND THE STRUCTURE. BASE MATERIAL IN ACCORDANCE WITH SECTION 200-2.2 OF THE SSPWC (GREEN BOOK) PER LADWP SPECIFICATION NO. 104.
- VAULTS LONGITUDINAL DIRECTION (14' LENGTH) SHALL BE INSTALLED PARALLEL TO THE TRAVEL DIRECTION OF THE STREET TO AVOID INTERFERENCE WITH ADJACENT UTILITIES.
- EACH CONCRETE SECTION SHALL BE MARKED ON THE INSIDE & OUTSIDE WITH "JENSEN PRECAST", THE DESIGNATION "DWPI/FA-CN", AND THE DATE OF THE POUR.
- EACH CONCRETE SECTION SHALL HAVE CAST-IN ON THE INSIDE "JENSEN", THE YEAR, AND THE DESIGNATION "FA-CN".
- NO SHARP OR ROUGH EDGES ON THE TERMINATORS ENTERING THE VAULT.
- K45-VN12-12T VAULT NECK AND COVER, WITH APPROVED CAST IRON COVER TO BE USED WITH THIS VAULT.
- EACH PIECE TO BE STENCILED WITH ITS PART NO.
- MINIMUM EXCAVATION SIZE: 11'-0" X 17'-0" X DEPTH REQ'D.
- KPKINT-H172-12-G1-A-OP1, 100021848-INTERCEPT PACKAGE PLACED BY OTHERS.
- ADDITIONAL SUBMITTAL, PERMIT AND CONSTRUCTION PLAN REVIEW WILL BE REQUIRED FOR EACH PROJECT LOCATION. SUBMIT TO CITY ENGINEERS FOR APPROVAL PRIOR TO START OF ANY CONSTRUCTION.
- ALL INSTALLATIONS SHALL COMPLY WITH ALL OTHER LOCAL GOVERNING CODES AND REGULATION INCLUDING CALIFORNIA PUBLIC UTILITIES COMMISSION REGULATIONS.

**STOCKPILE - JENSEN PRECAST  
CITY OF LOS ANGELES INSPECTION  
REQUIRED WO# C0034604**

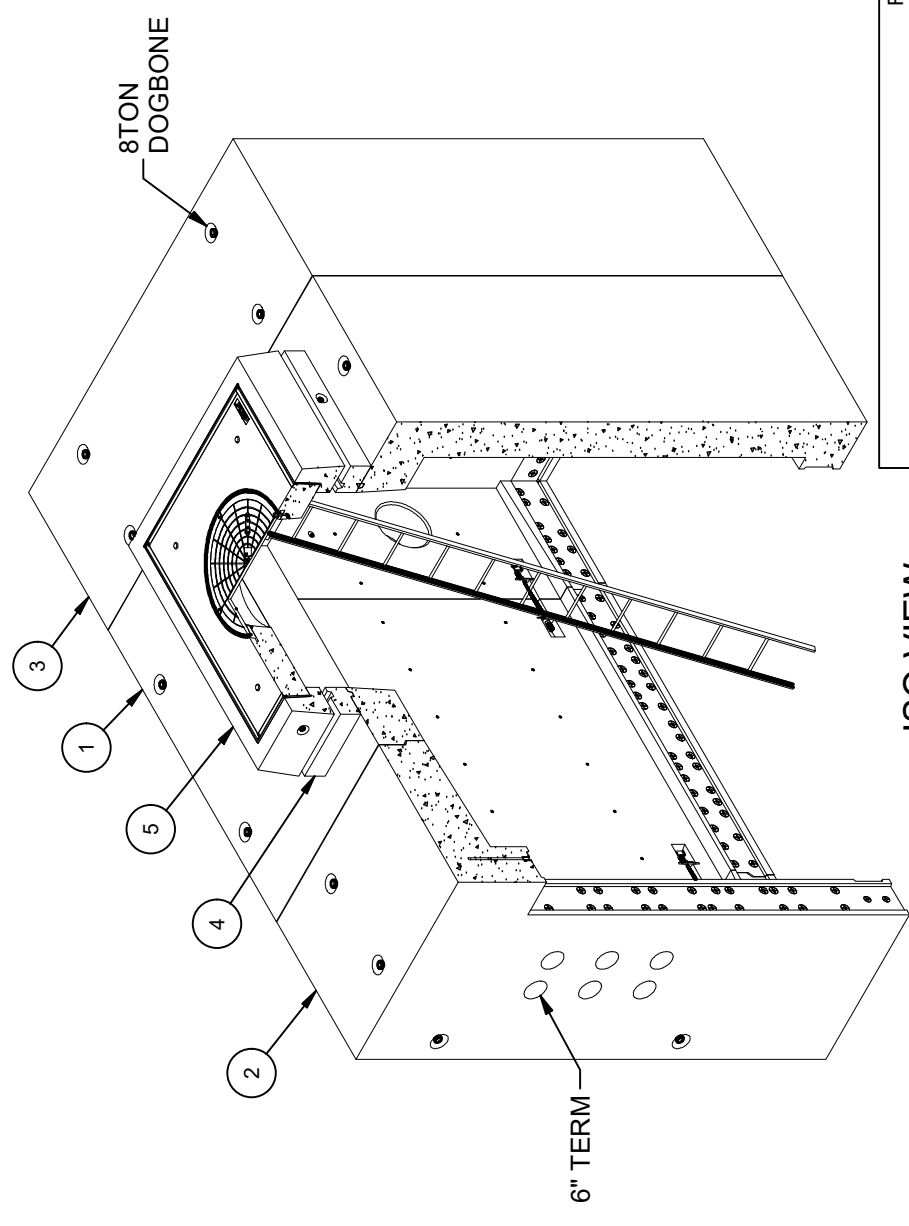
**LIFTING NOTES**

- THIS CONCRETE PRODUCT IS DESIGNED TO BE LIFTED WITH 4 EQUALLY LOADED RIGGINGS LEGS MIN. 90° SLING ANGLE, MEASURED FROM HORIZONTAL.

BURY DEPTH:	1.5' - 4.0' to Top
WATER LEVEL:	3.0'
DESIGN SPEC:	AASHTO LRFD, ACI 318
AGENCY:	LADWP
APPROX. WEIGHT:	92148.22 Lbs
LOADING SPEC:	AASHTO HL-93
AGENCY SPEC:	COLA H-172 G-1A-14' OP1

**BILL OF MATERIALS**

ITEM	UNIT QTY	QTY	PART NUMBER	DESCRIPTION	MASS (lb)
1	1	1	100021842	Tunnel Vault Intercept TV196112 Center - Groove Groove 96Wx112Hx96L COLA LADWP H-172 G-1A	36277
2	1	1	100021843	Tunnel Vault Intercept TV196112 End - Tongue 96Wx112Hx36L LADWP TypeA COLA H-172 G-1A OP1	25197
3	1	1	100021844	Tunnel Vault Intercept TV196112 End - Tongue 96Wx112Hx36L TypeB COLA LADWP H-172 G-1A OP1	25199
4	1	1	200051163	Riser 4860X6 LADWP 1-802 2B COLA	1169
5	1	1	200079821	Vault Neck and Plug Cover Assembly 4860x12 30°C LADWP 1-802 G-2B COLA INSP R-1581	3995
6	1	8	100007114	ROD THREADED COIL YELLOW DIP 3/4 X 20"	
7	1	16	100008121	WASHER 3X3X.5 W.875 HOLE GALV	
8	1	24	100007010	HEX COIL NUT 3/4-4.5 POST YELLOW DIP	
9	1	4	100009239	ROD THREADED COIL YELLOW DIP 3/4 X 10-1/2"	
10	1	8	100007136	WASHER FLAT 3/4 REGULAR TYPE A ZINC	
11	1	6	100006069	STRUT SLOTTED C-CHANNEL 1-5/8 X 1-5/8 12GA BOLT-ON GALV 92IN	
12	1	12	100006063	STRUT SLOTTED C-CHANNEL 1-5/8 X 1-5/8 12GA BOLT-ON GALV 22IN	
13	1	84	100004339	BOLT HEX 1/2-13 UNC 2 304SS	
14	1	84	100007135	WASHER FLAT 1/2 TYPE A 304SS	
15	1	12	100006091	STRUT C-CHANNEL CONCRETE INSERT 1-5/8 X 1-5/8 12GA W/ANCHORS N-3200 24IN GALV	
16	1	2	100003033	PULL IRON OFFSET .875DIA 6H X 5W X 10.875L 316SS MB BC153230	
17	1	1	100005940	PULL IRON OFFSET WITH REBAR .875DIA 4.5H 316SS LADWP	
18	1	4	100005716	FITTING PVC SCH 40 CAPPED ENDS 2 X 13	
19	1	1	100007585	LADDER HANGER ASSEMBLY GALV	
20	1	1	100009251	LADDER HOOKED GALV 12FT ED/LA I3382	
21	3.500 gal	3.500 gal	100006420	COATING PAINT LATEX WHITE	
22	1.000 ul	1.000 ul	100005749	SEALANT JOINT BUTYL RUBBER ASTM C-990 AND M198 CS-102 1IN EQUIV X14.5FT PER BOX 118FT	



**ISO VIEW**

**REVISION HISTORY**

REV	DESCRIPTION	DATE	APPROVED
C	UPDATED BOM PER CITY APPROVAL & STANDARD NOTE	10/17/2023	

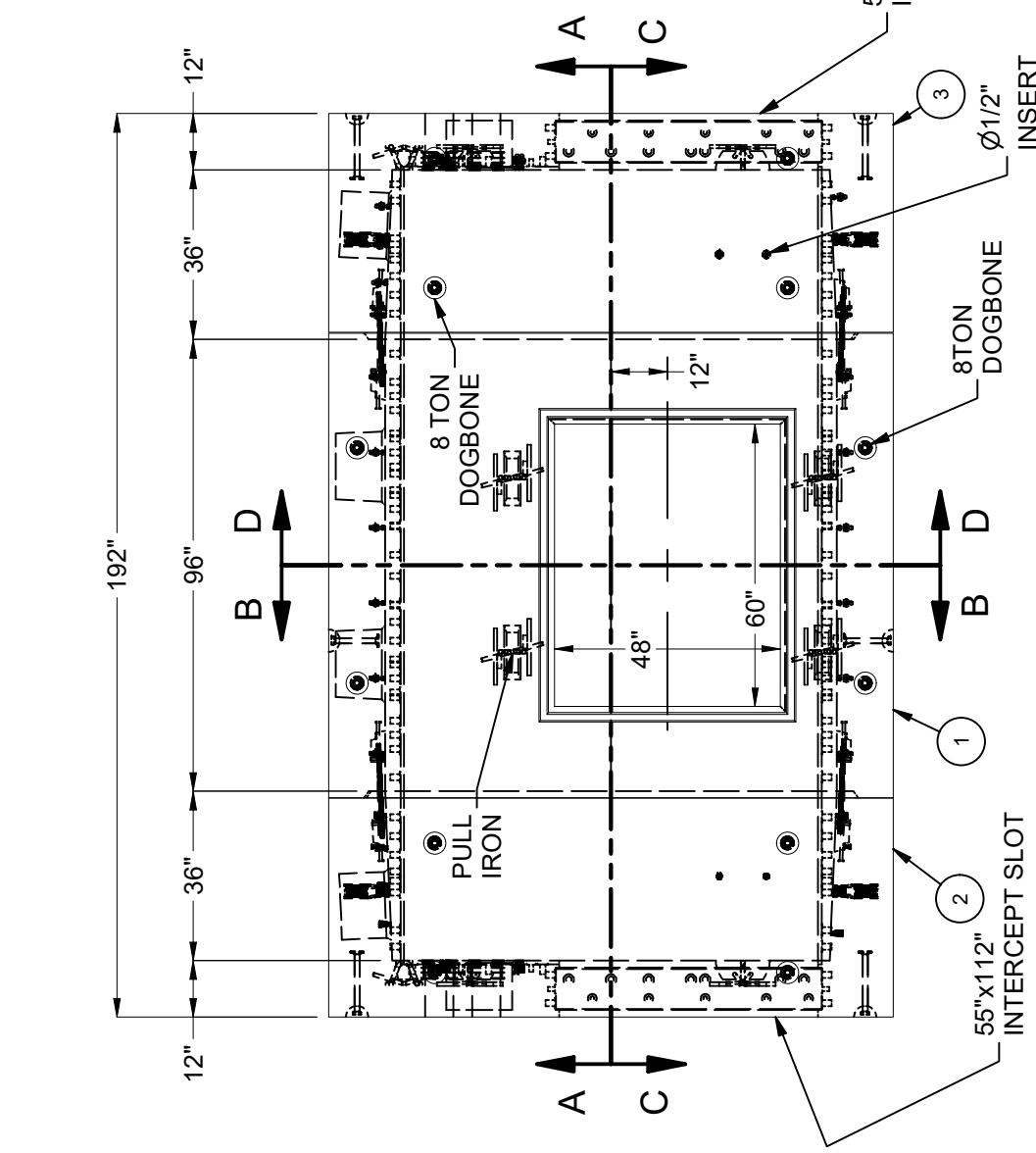
**DESCRIPTION:**  
Tunnel Vault Layout TV96112x14' Terminators, Slot 48"x60"E LADWP COLA H-172 G-1A-14' OP1 Int. Paint - White Latex LAYOUT REVIEW

**PART NUMBER:** 100021838  
**DRAWN BY:** J. Prado  
**CREATED:** 6/22/2020  
**MODIFIED:** 10/17/2023

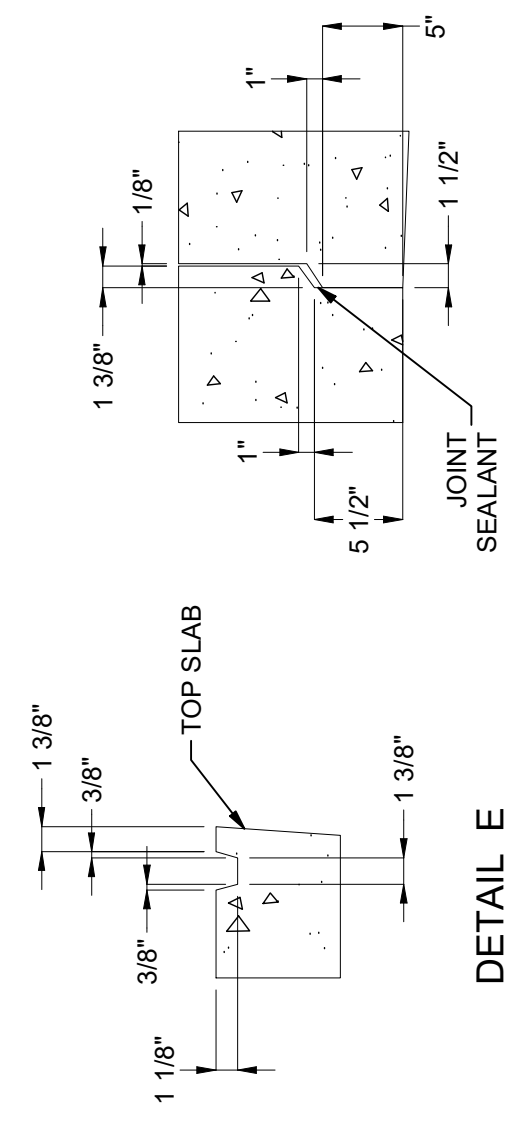
©2023, Jensen Precast. All rights reserved. All materials appearing as Jensen Precast documents and the like are proprietary work product and are protected under U.S. copyright and other laws. Unless in conjunction with business conducted with Jensen Precast, any use of Jensen Precast work product without express, written consent is prohibited, and recipient is prohibited from distributing any and all work product to non-approved third parties under penalty of civil action.

**JENSEN PRECAST** EST. 1968  
**WWW.JENSENPRECAST.COM**

REV:	C-3
SHEET:	9
1 OF 2	

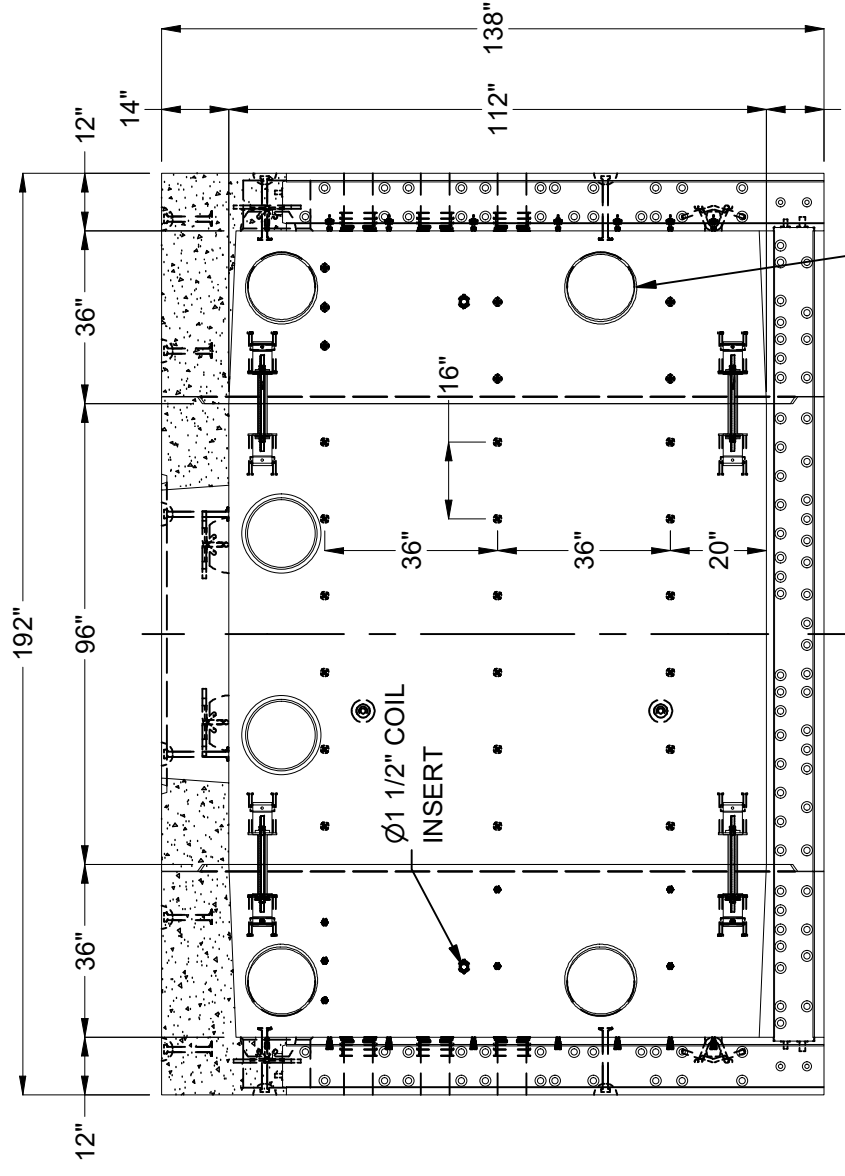


PLAN VIEW

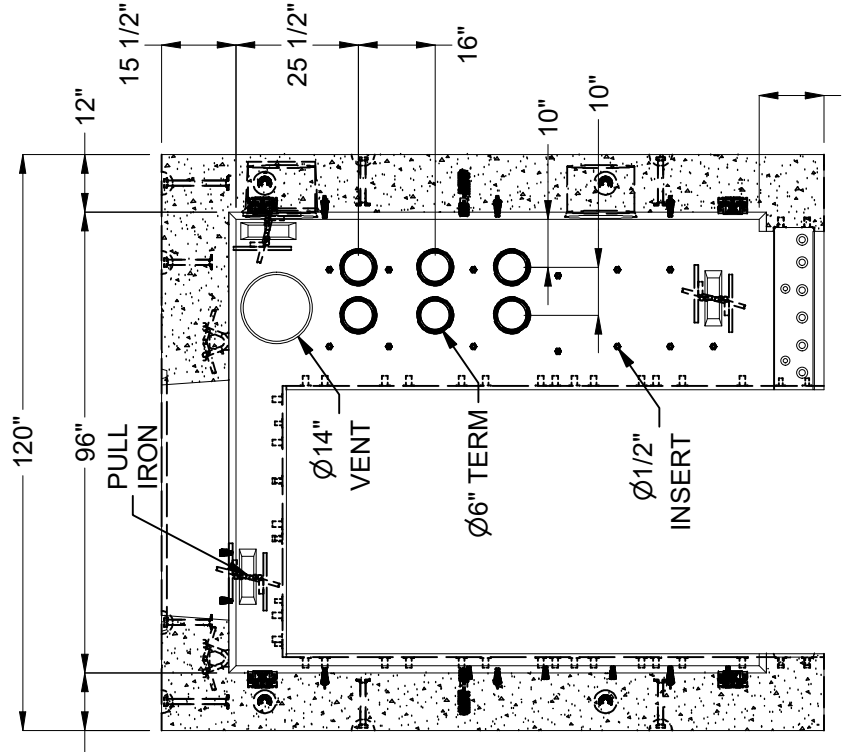


DETAIL E  
GROOVE DETAIL

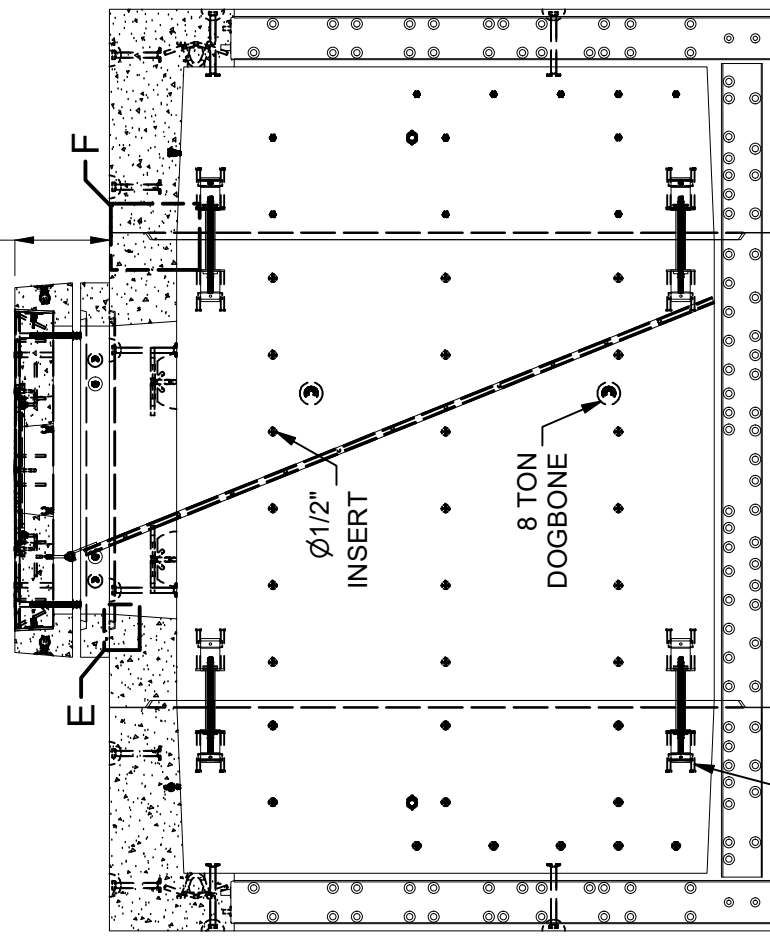
DETAIL F  
WALL & TOP SLAB



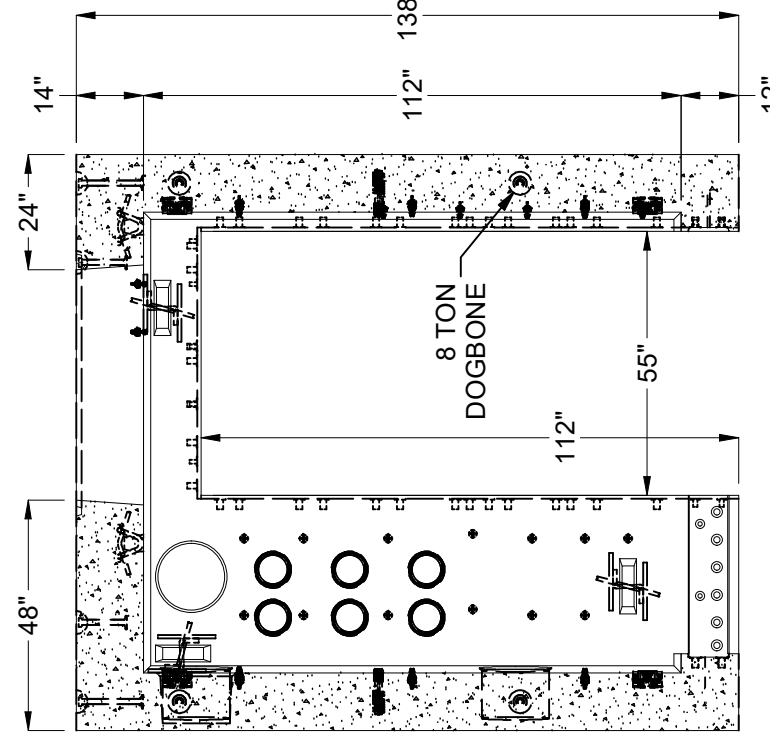
SECTION A-A



SECTION B-B



SECTION C-C



SECTION D-D

BURY DEPTH:	1.5' - 4.0' to Top
WATER LEVEL:	3.0'
DESIGN SPEC:	AASHTO LRFD, ACI 318
AGENCY:	LADWP
APPROX. WEIGHT:	92148.22 Lbs
LOADING SPEC:	AASHTO HL-93
AGENCY SPEC:	COLA H-172 G-1A-14' OP1

**JENSEN PRECAST** EST. 1968  
[WWW.JENSENPRECAST.COM](http://WWW.JENSENPRECAST.COM)

©2023 Jensen Precast. All rights reserved. All materials appearing as Jensen Precast documents and the like are proprietary work product and are protected under U.S. copyright and other laws. Unless in conjunction with business conducted with Jensen Precast, any use of Jensen Precast work product without express, written consent is prohibited, and recipient is prohibited from distributing any and all work product to non-approved third parties under penalty of civil action.

DESCRIPTION:	Tunnel Vault Layout TV96112x14' Terminators, Slot 48"x60"E LADWP COLA H-172 G-1A-14' OP1 Int. Paint - White Latex LAYOUT DRAWING
PART NUMBER:	100021838
CREATED:	6/22/2020
DRAWN BY:	J. Prado
MODIFIED:	10/17/2023