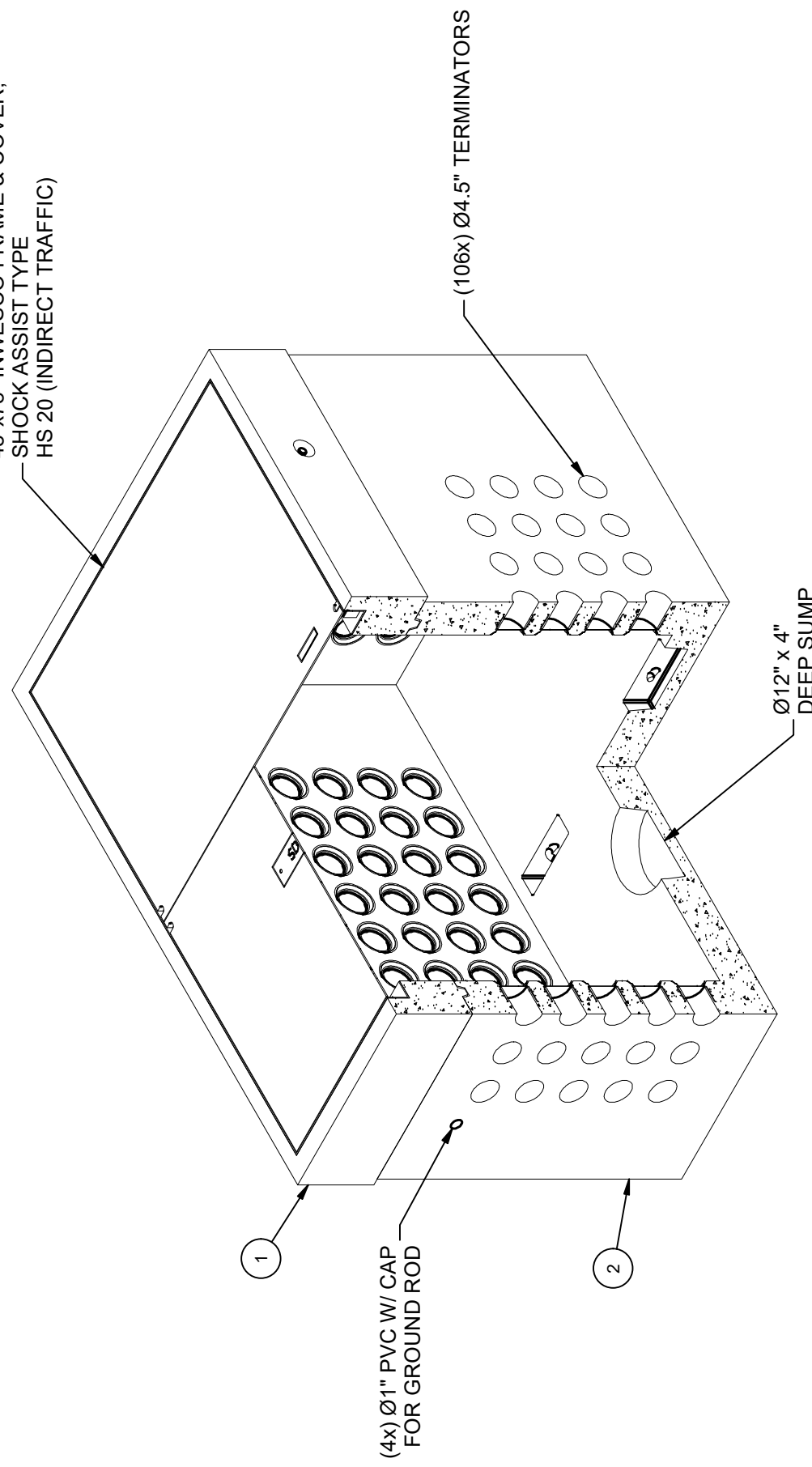


- DESIGN NOTES
- DESIGNED IN ACCORDANCE WITH AASHTO HS20-44 TRAFFIC BRIDGE LOADING USING 5,500 PSI COMPRESSIVE STRENGTH CONCRETE AND 60,000 PSI YIELD STRENGTH ASTM A-706 STEEL REINFORCEMENT PER CALCS. #34420
 - MINIMUM EXCAVATION SIZE: 6'-0" X 8'-6" X DEPTH REQ'D.
 - COVER DESIGN FOR TRAFFIC LOADING.
 - VAULT TO BE PLACED ON A MIN. 6" BASE OF CRUSHER RUN FOR EASE OF INSTALLATION AND EVEN LOAD DISTRIBUTION.
 - EXTERIOR TO BE COATED WITH WATERPROOFING SEALER.
 - ALL PARTS TO BE STENCILED: MFG DATE / JOB NUMBER / PRODUCT ID / WEIGHT.
 - FOR COMPLETE DESIGN AND PRODUCT INFORMATION CONTACT JENSEN PRECAST.

CROSS REFERENCE		
JENSEN PART No.	SHORT DESCRIPTION	SDGE STOCK No.
200024018	Substation Pull Box 300 (4' x 6.5' x 54")	S163246
200043302	Substation Pull Box 300 - 6" Riser Section - Optional	S163252
200043301	Substation Pull Box 300 - 12" Riser Section - Optional	S163258

BILL OF MATERIALS					
ITEM	UNIT QTY	QTY	PART NUMBER	DESCRIPTION	MASS (lb)
1	1	1	200024060	Riser 4878x12 Rect. Riser Cast-In Cover SDGE PB 300	2549
2	1	1	200023964	Vault 4878x42 Rect. Bottom Section Terminators Sump SDGE PB 300	8043
3	1.000 ul	1.000 ul	100005749	SEALANT JOINT BUTYL RUBBER ASTM C-990 AND M198 CS-102 1IN EQUIV X14.5FT PER BOX 118FT	
4	4.750 gal	4.750 gal	100038043	COATING WATERPROOFING CoatMasters CM7007 IMRAE	

48"x78" INWESCO FRAME & COVER,
SHOCK ASSIST TYPE
HS 20 (INDIRECT TRAFFIC)



ISO VIEW

LIFTING NOTES

- FIELD INSTALLATION: PLANT DEMOLING: MINIMUM HANDLING CONCRETE STRENGTH F_c = 5500 PSI RIGGING EQUALIZER REQUIRED TO EQUALIZE LOAD TO 4 LIFTING POINTS WITH A SLING ANGLE BETWEEN 60° AND 90°

BURY DEPTH:	0.0' - 0.0' to Top
WATER LEVEL:	3.0'
DESIGN SPEC:	ASTM C857, ACI 318
AGENCY:	SDGE
APPROX. WEIGHT:	10592.8 Lbs
LOADING SPEC:	A-16 (AASHTO HS20-44)
AGENCY SPEC:	PB 300



©2022 Jensen Precast. All rights reserved. All materials appearing as Jensen Precast documents and the like are proprietary work product and are protected under U.S. copyright and other laws. Unless in conjunction with business conducted with Jensen Precast, any use of Jensen Precast work product without express, written consent is prohibited, and recipient is prohibited from distributing any and all work product to non-approved third parties under penalty of civil action.

REVISION HISTORY			
REV	DESCRIPTION	DATE	APPROVED
B-2	EXTERIOR COATING ADDED TO BOM	3/21/2022	

DESCRIPTION: Utility Vault 4878 Layout Assembly SDGE PB 300

REV: B-3

SHEET: 23

PART NUMBER: 200024018 LAYOUT REVIEW

DRAWN BY: J. Prado

CREATED: 7/10/2019 MODIFIED: 3/21/2022

1 OF 2

