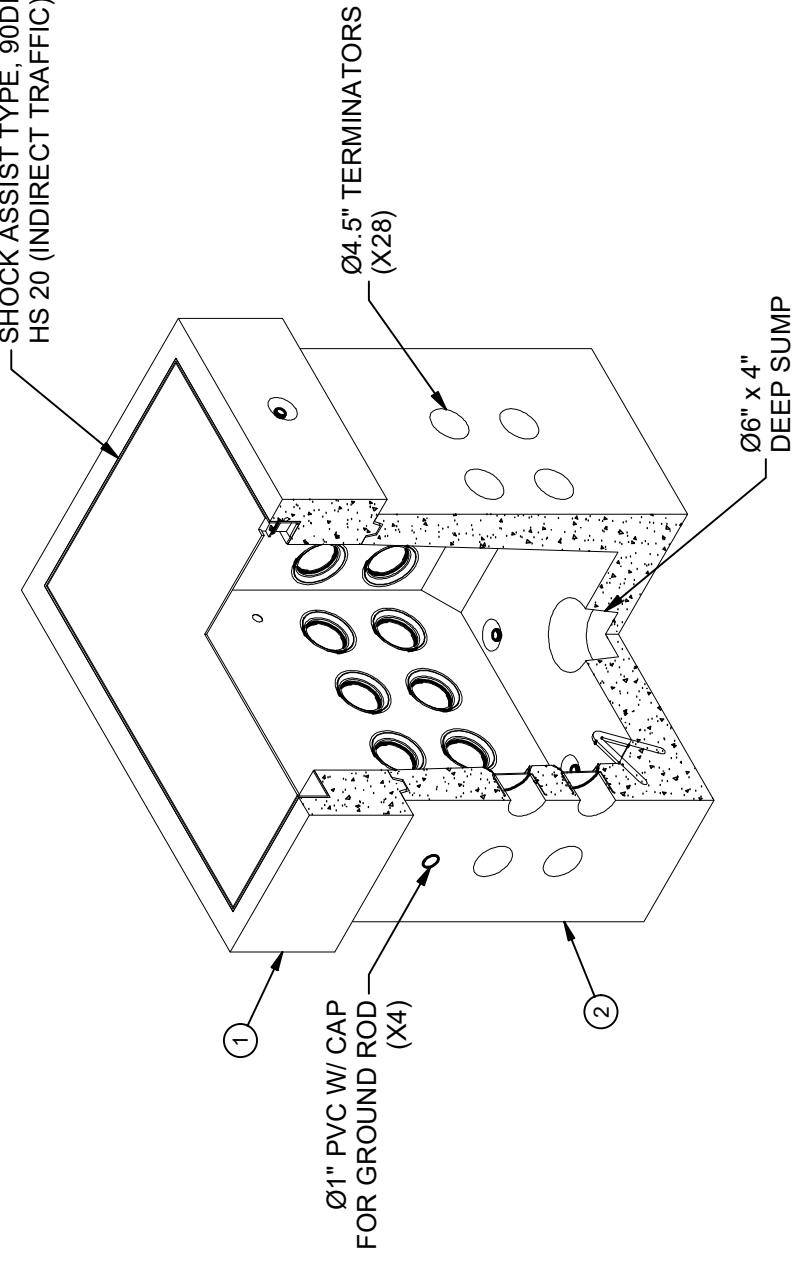


BILL OF MATERIALS					
ITEM	UNIT QTY	QTY	PART NUMBER	DESCRIPTION	MASS (lb)
1	1	1	200024233	Riser Cast-In Cover SDGE PB 100	991
2	1	1	200024209	Vault 2436x30 Rect. Bottom Section Terminators Sump SDGE PB 100	2081
3	1,000 ul	1,000 ul	100005749	SEALANT JOINT BUTYL RUBBER ASTM C-990 AND M198 CS-102 1IN EQUIV X14.5FT PER BOX 118FT	
4	2,250 gal	2,250 gal	100038043	COATING WATERPROOFING CoatMasters CM7007 IMRAE	

- DESIGN NOTES**
- DESIGNED IN ACCORDANCE WITH AASHTO HS20-44 TRAFFIC BRIDGE LOADING USING 5,500 PSI COMPRESSIVE STRENGTH CONCRETE AND 60,000 PSI YIELD STRENGTH ASTM A-706 STEEL REINFORCEMENT PER CALCS. #34417
  - MINIMUM EXCAVATION SIZE: 4'-0" X 5'-0" X DEPTH REQ'D.
  - COVER DESIGN FOR TRAFFIC LOADING.
  - VAULT TO BE PLACED ON A MIN. 6" BASE OF CRUSHER RUN FOR EASE OF INSTALLATION AND EVEN LOAD DISTRIBUTION.
  - EXTERIOR TO BE COATED WITH WATERPROOFING SEALER.
  - ALL PARTS TO BE STENCILED: MFG DATE / JOB NUMBER / PRODUCT ID / WEIGHT.
  - FOR COMPLETE DESIGN AND PRODUCT INFORMATION CONTACT JENSEN PRECAST.

CROSS REFERENCE		
JENSEN PART No.	SHORT DESCRIPTION	SDGE STOCK No.
200024231	Substation Pull Box 100 (2' x 3' x 42")	S163242
200054521	Substation Pull Box 100 - 6" Riser Section - Optional	S163248
200054520	Substation Pull Box 100 - 12" Riser Section - Optional	S163254

24" x 36" INWESCO FRAME & COVER,  
SHOCK ASSIST TYPE, 90DEGREES  
HS 20 (INDIRECT TRAFFIC)



ISO VIEW

**LIFTING NOTES**

FIELD INSTALLATION: PLANT DEMOLING: MINIMUM HANDLING CONCRETE STRENGTH F<sub>c</sub> = 5500 PSI RIGGING EQUALIZER REQUIRED TO EQUALIZE LOAD TO 4 LIFTING POINTS WITH A SLING ANGLE BETWEEN 60° AND 90°

BURY DEPTH:	0.0' - 0.0' to Top
WATER LEVEL:	3.0'
DESIGN SPEC:	ASTM C857, ACI 318
AGENCY:	SDGE
APPROX. WEIGHT:	3072.05 Lbs
LOADING SPEC:	A-16 (AASHTO HS20-44)
AGENCY SPEC:	PB 100

REVISION HISTORY			
REV	DESCRIPTION	DATE	APPROVED
B-6	REPLACED HATCH AND CONCRETE MIX	3/21/2022	

DESCRIPTION: Pull Box 2436 Layout Assembly SDGE PB 100

REV: B-7

PART NUMBER: 200024231 LAYOUT REVIEW

CREATED: 7/15/2019 DRAWN BY: M. Zaragoza

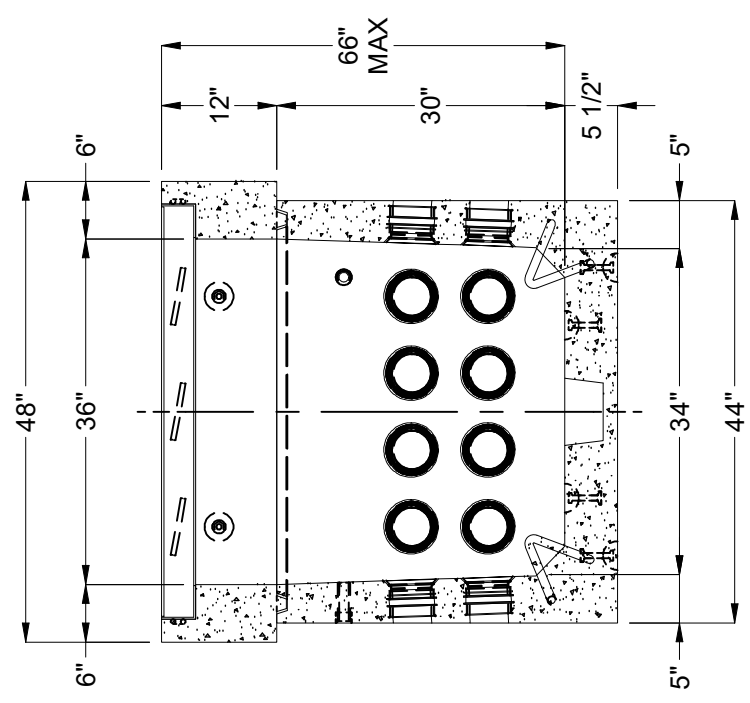
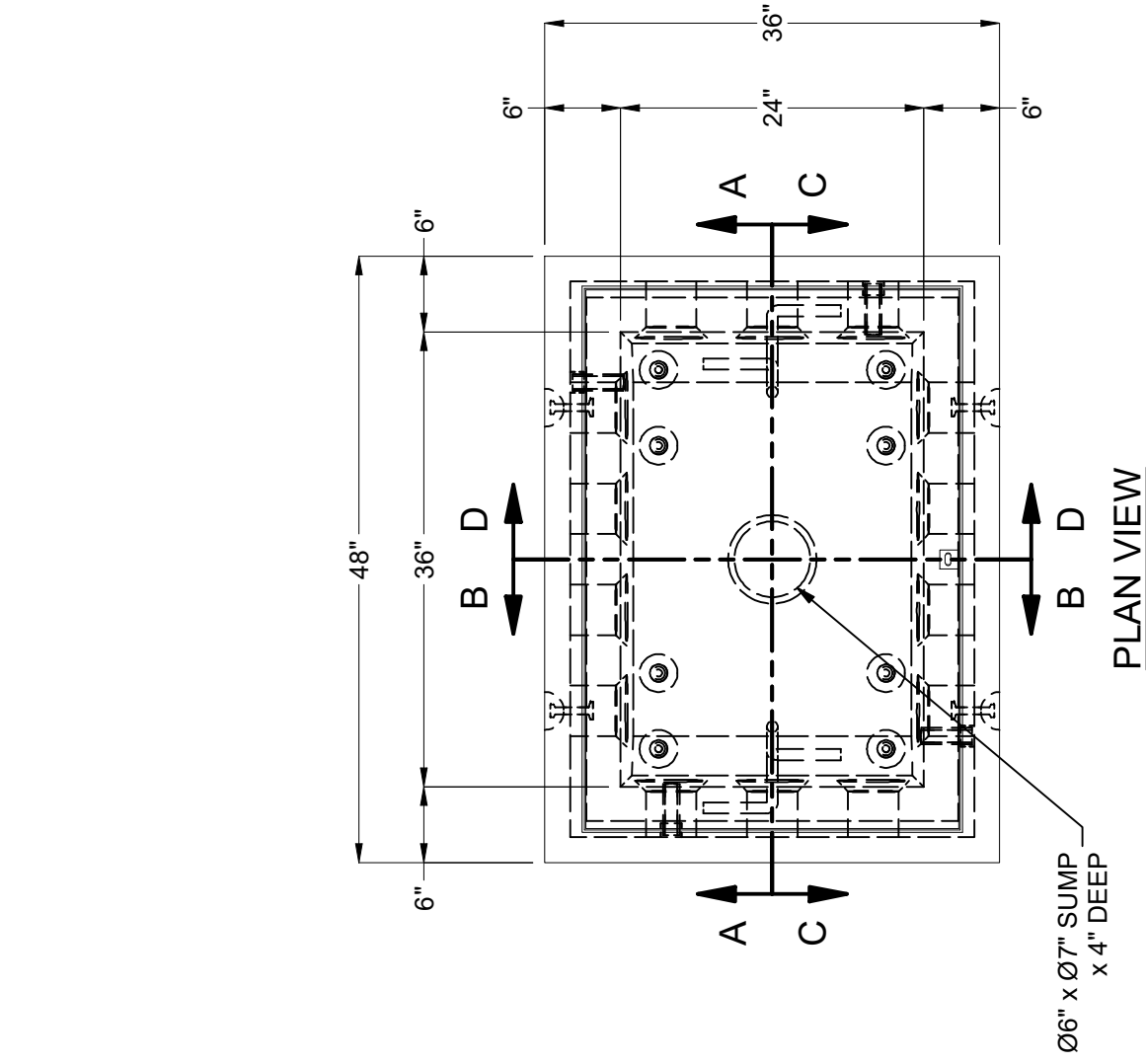
MODIFIED: 3/21/2022

SHEET: 1 OF 2

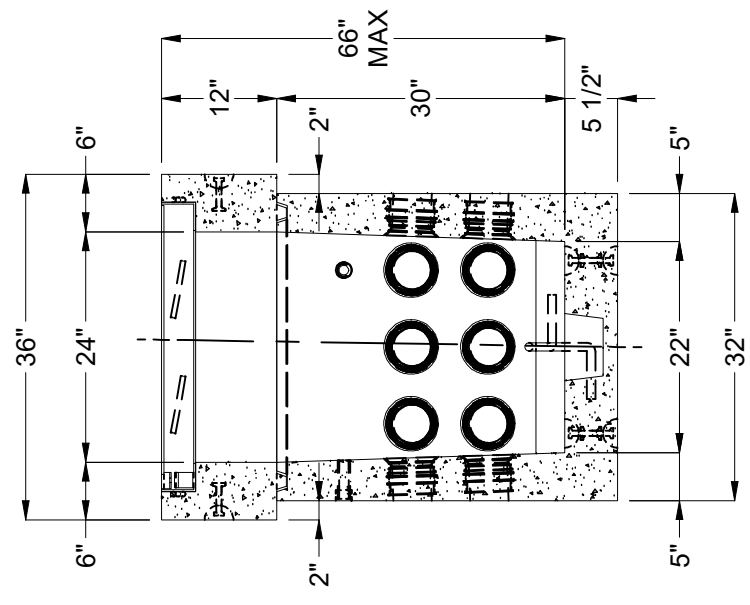
**JENSEN PRECAST** EST. 1968

WWW.JENSENPRECAST.COM

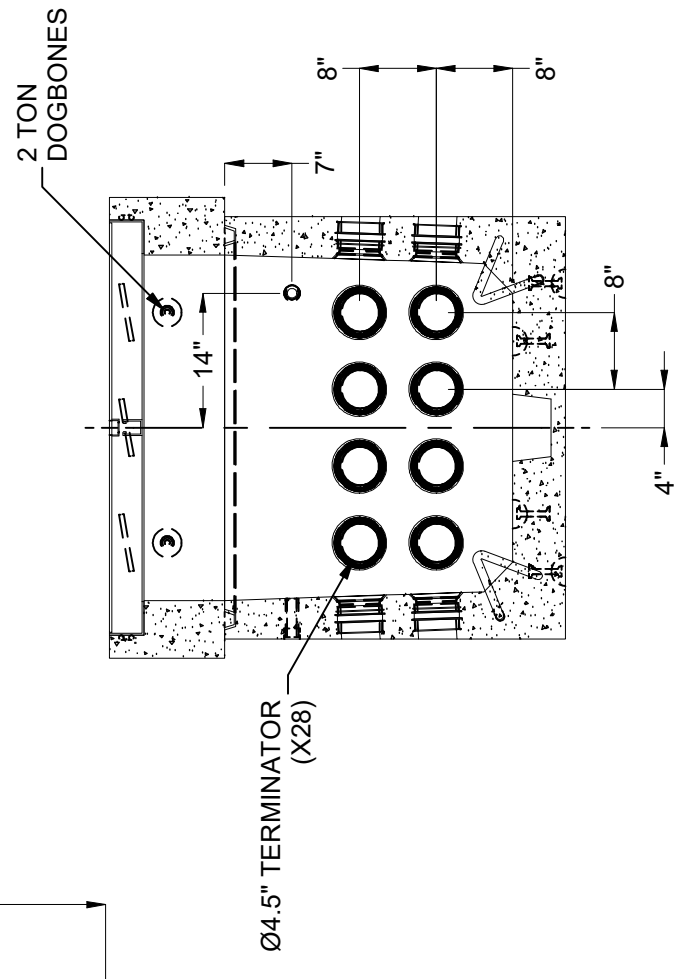
©2022 Jensen Precast. All rights reserved. All materials appearing as Jensen Precast documents and the like are proprietary work product and are protected under U.S. copyright and other laws. Unless in conjunction with business conducted with Jensen Precast, any use of Jensen Precast work product without express, written consent is prohibited, and recipient is prohibited from distributing any and all work product to non-approved third parties under penalty of civil action.



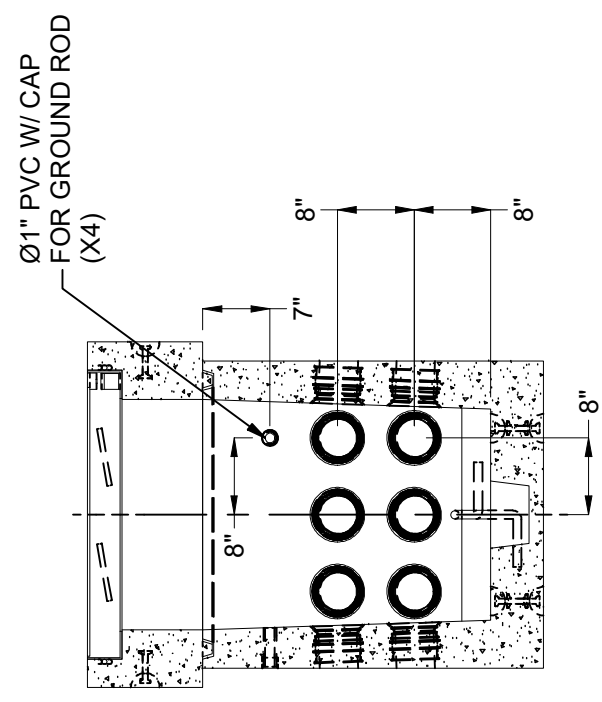
**SECTION A-A**



**SECTION B-B**



**SECTION C-C**



**SECTION D-D**

BURY DEPTH:	0.0' - 0.0' to Top
WATER LEVEL:	3.0'
DESIGN SPEC:	ASTM C857, ACI 318
AGENCY:	SDGE
APPROX. WEIGHT:	3072.05 Lbs
LOADING SPEC:	A-16 (AASHTO HS20-44)
AGENCY SPEC:	PB 100

**JENSEN PRECAST** EST. 1968  
[WWW.JENSENPRECAST.COM](http://WWW.JENSENPRECAST.COM)

©2022 Jensen Precast. All rights reserved. All materials appearing as Jensen Precast documents and the like are proprietary work product and are protected under U.S. copyright and other laws. Unless in conjunction with business conducted with Jensen Precast, any use of Jensen Precast work product without express, written consent is prohibited, and recipient is prohibited from distributing any and all work product to non-approved third parties under penalty of civil action.

DESCRIPTION:	Pull Box 2436 Layout Assembly SDGE PB 100
PART NUMBER:	200024231
CREATED:	7/15/2019
LAYOUT DRAWING	
DRAWN BY:	M. Zaragoza
MODIFIED:	3/21/2022