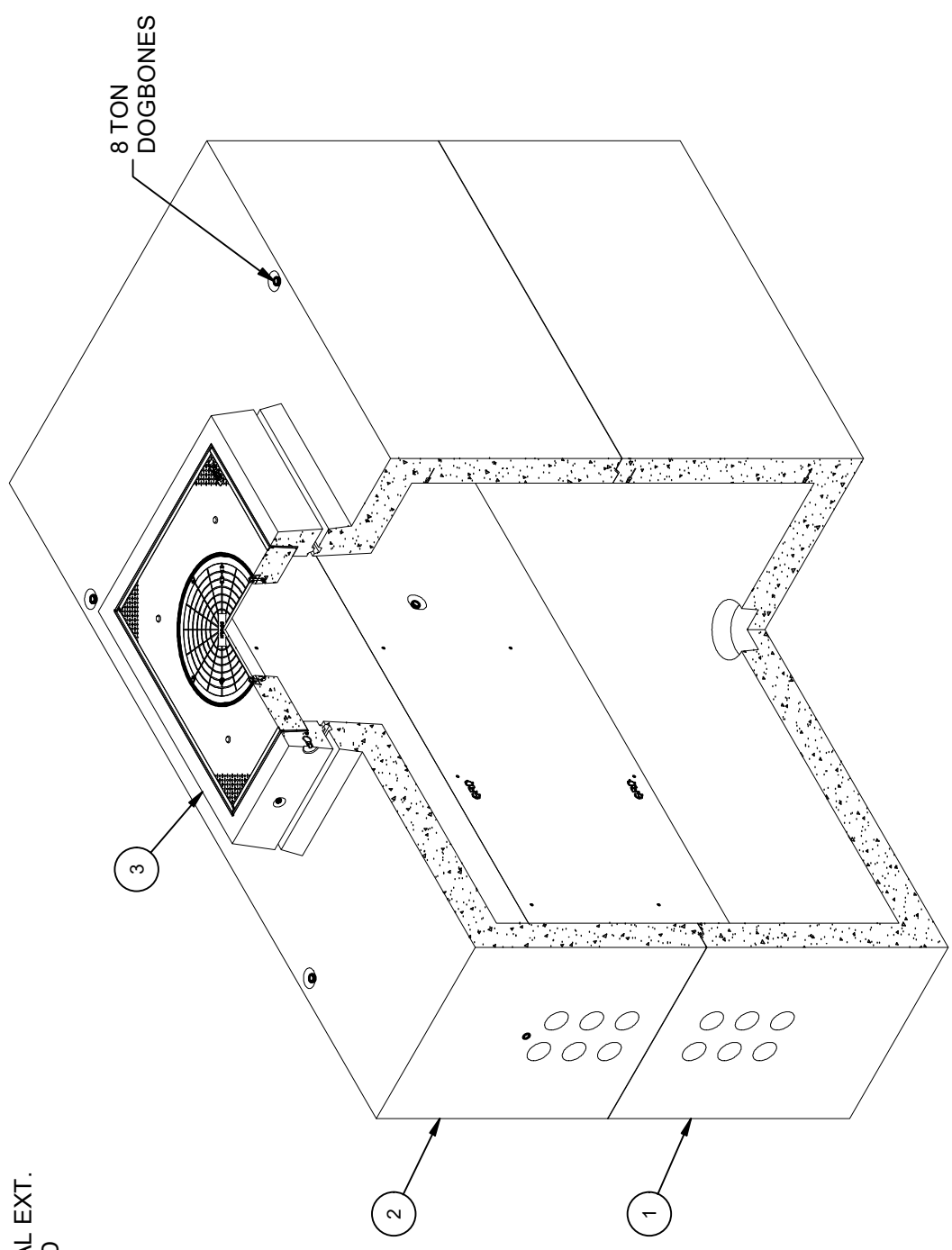


DESIGN NOTES

- DESIGNED IN ACCORDANCE WITH AASHTO HS-20-44 TRAFFIC BRIDGE LOADING USING 6,000 PSI COMPRESSIVE STRENGTH CONCRETE AND 60,000 PSI YIELD STRENGTH ASTM A-706 STEEL REINFORCEMENT PER CALCS. #34213.
- MINIMUM EXCAVATION SIZE: 10'-4" X 18'-4" X DEPTH REQ'D.
- COVER DESIGN FOR TRAFFIC LOADING.
- VAULT TO BE PLACED ON A MIN. 6" BASE OF CRUSHER RUN FOR EASE OF INSTALLATION AND EVEN LOAD DISTRIBUTION.
- EXTERIOR TO BE COATED WITH WATERPROOFING SEALER.
- ALL PARTS TO BE STENCILED: MFG DATE / JOB NUMBER / PRODUCT ID / WEIGHT.
- STENCIL "GRD" IN RED LETTERS
- FOR COMPLETE DESIGN AND PRODUCT INFORMATION CONTACT JENSEN PRECAST.

CROSS REFERENCE	
JENSEN PART No.	SHORT DESCRIPTION
200048186	NECK, EXTENSION SECTION 6"
200056976	NECK, EXTENSION SECTION 9"
200048187	NECK, EXTENSION SECTION 12"
200024288	34002-01 TRANSMISSION 69 Kv U.G. MANHOLE TOP 8' x 16'
200024287	34002-01 TRANSMISSION 69 Kv U.G. MANHOLE BASE 8' x 16'

OPTIONAL EXT.
AS REQ'D



ISO VIEW

BILL OF MATERIALS

ITEM	UNIT QTY	QTY	PART NUMBER	DESCRIPTION	MASS (lb)
1	1	1	200024287	Vault 96192x57 Rect. Bottom Section Terminators Sump SDGE 34002-01	44101
2	1	1	200024288	Vault 96192x57 Rect. Top Section 48"x60"C Terminators SDGE 34002-01	42057
3	1	1	200040652	Utility Vault 4860 Assembly SDGE 3332	3963
4	1	4	100009239	ROD THREADED COIL YELLOW DIP 3/4 X 10-1/2"	
5	1	8	100007136	WASHER FLAT 3/4 REGULAR TYPE A ZINC	
6	1	8	100007010	HEX COIL NUT 3/4-4.5 POST YELLOW DIP	
7	1	4	100008100	BOLT FTJFT 1/2X6 GALV	
8	1.000 ul	1.000 ul	100005749	SEALANT JOINT BUTYL RUBBER ASTM C-990 AND M198 CS-102 1IN EQUIV X14.5FT PER BOX 118FT	
9	25.000 gal	25.000 gal	100038043	COATING WATERPROOFING CoatMasters CM7007 IMRAE	

LIFTING NOTES

- FIELD INSTALLATION: PLANT DEMOLING: MINIMUM HANDLING CONCRETE STRENGTH F_c = 5500 PSI RIGGING EQUALIZER REQUIRED TO EQUALIZE LOAD TO 4 LIFTING POINTS WITH A SLING ANGLE BETWEEN 60° AND 90°
- BURY DEPTH: 0.0' - 4.0' to Top
- WATER LEVEL: 3.0'
- WEIGHT: 90129.29 Lbs
- DESIGN SPEC: ASTM C857, ACI 318
- LOADING SPEC: A-16 (AASHTO HS20-44)
- AGENCY SPEC: SDGE
- AGENCY SPEC: 34002-01

REVISION HISTORY

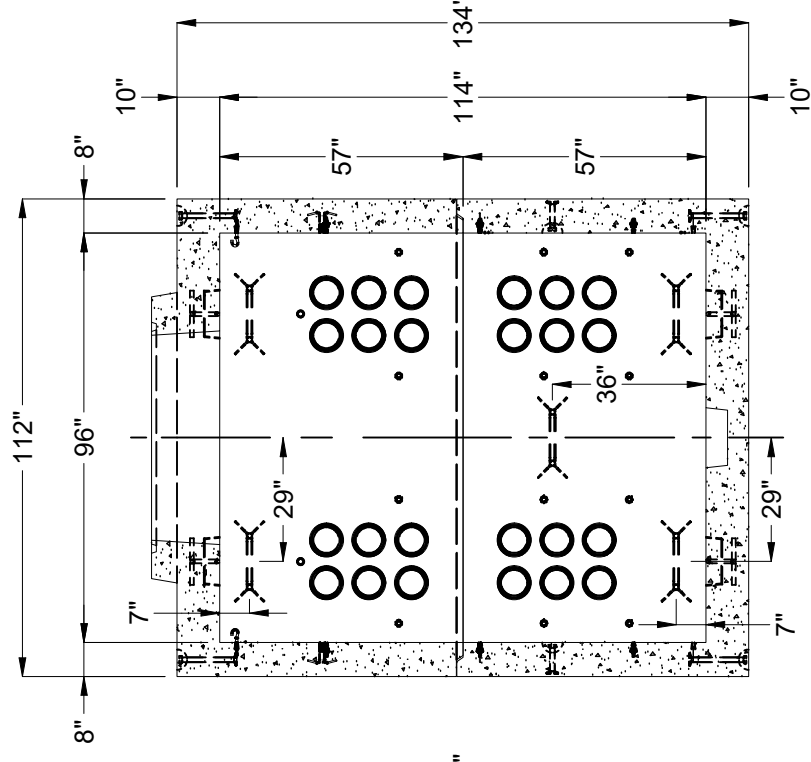
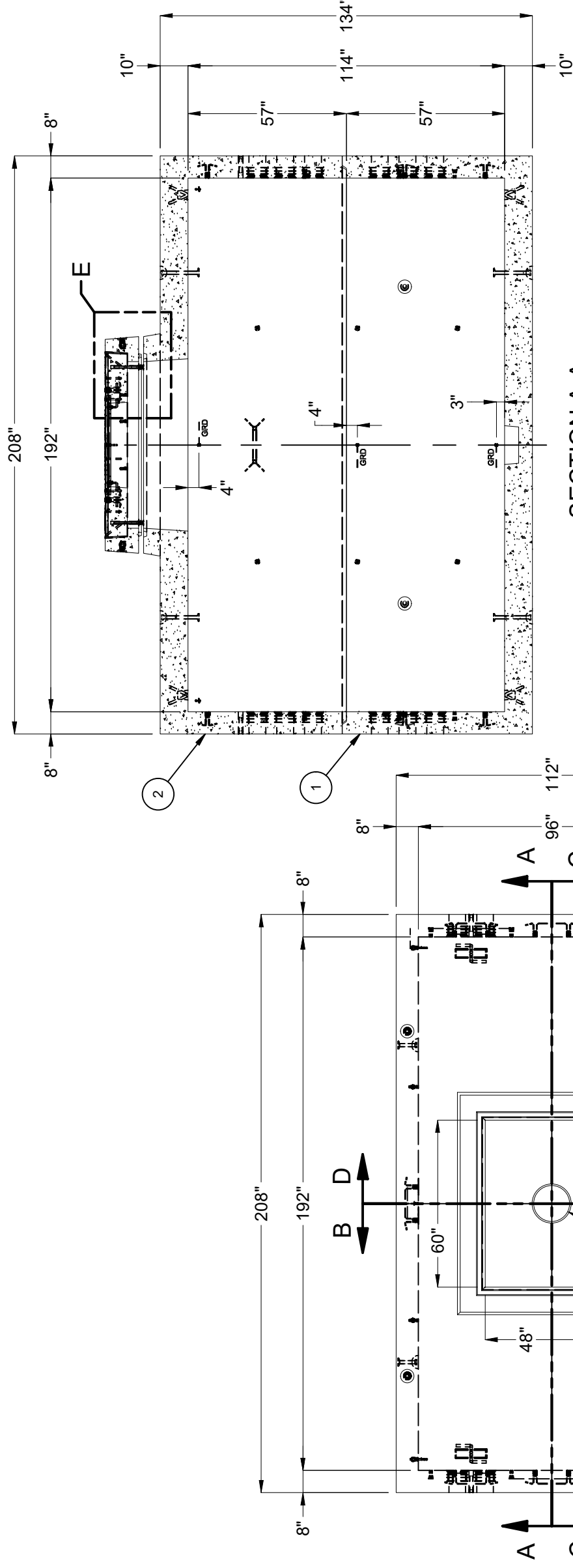
REV	DESCRIPTION	DATE	APPROVED
C	ADDED COATING & STOCK No.	1/19/2022	

DESCRIPTION: Utility Vault 96192 Layout Assembly SDGE 34002-01

REV:	C-1
SHEET:	50
PART NUMBER:	200024290
DRAWN BY:	J. Prado
CREATED:	7/16/2019
MODIFIED:	1/19/2022

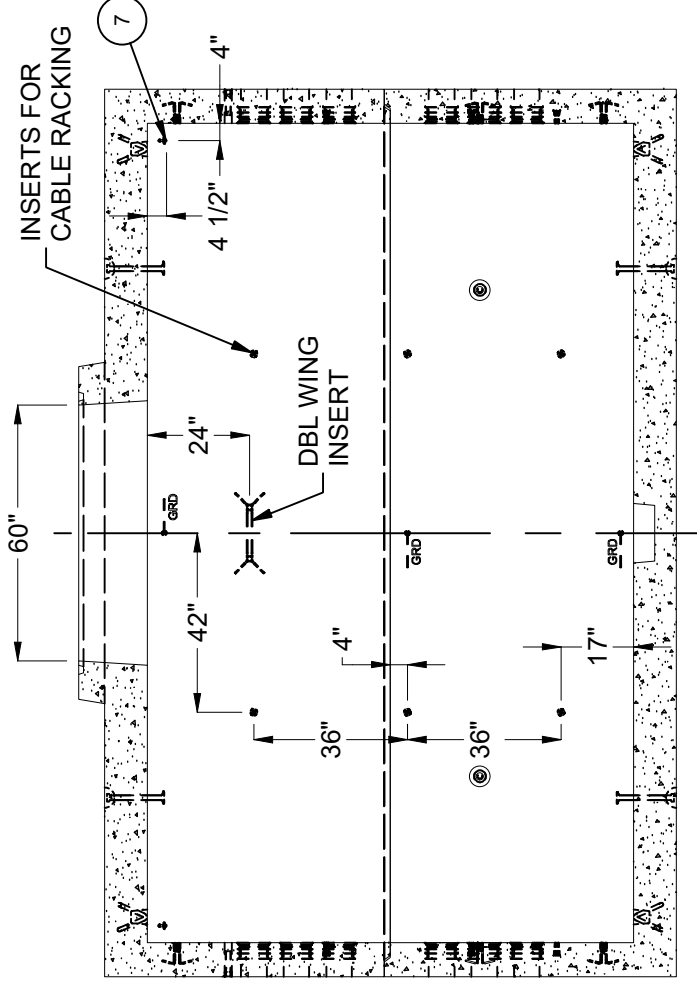
©2018 Jensen Precast-All rights reserved. All materials appearing as Jensen Precast documents and the like are proprietary work product and are protected under U.S. copyright and other laws. Unless in conjunction with business conducted with Jensen Precast, any use of Jensen Precast work product without express, written consent is prohibited, and recipient is prohibited from distributing any and all work product to non-approved third parties under penalty of civil action.

JENSEN PRECAST EST. 1968
WWW.JENSENPRECAST.COM

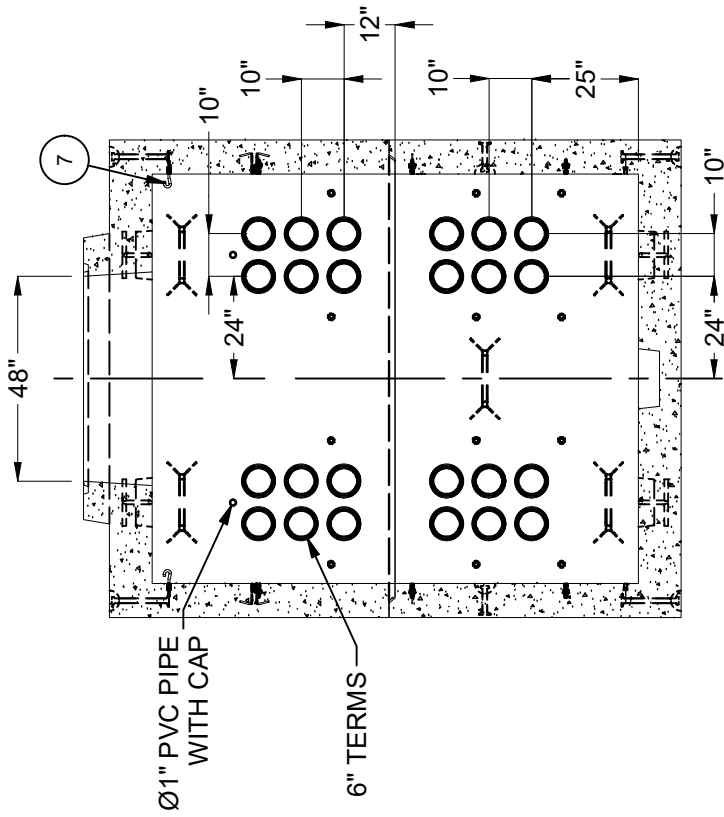


SECTION A-A

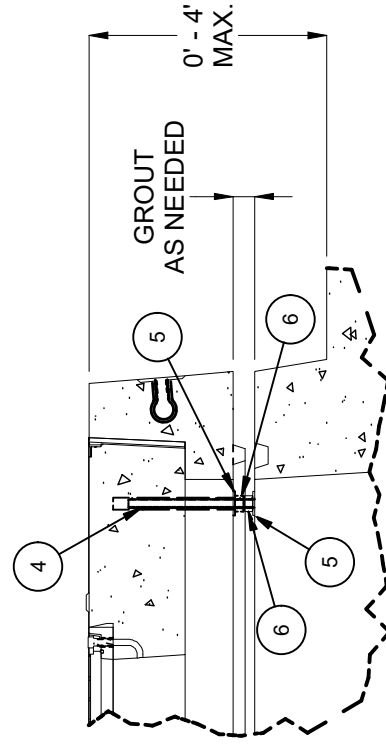
SECTION B-B



SECTION C-C



SECTION D-D



DETAIL E

BURY DEPTH:	0.0' - 4.0' to Top
WATER LEVEL:	3.0'
DESIGN SPEC:	ASTM C857, ACI 318
AGENCY:	SDGE
WEIGHT:	90129.29 Lbs
LOADING SPEC:	A-16 (AASHTO HS20-44)
AGENCY SPEC:	34002-01

JENSEN PRECAST EST. 1968
WWW.JENSENPRECAST.COM

©2018 Jensen Precast. All rights reserved. All materials appearing as Jensen Precast documents and the like are proprietary work product and are protected under U.S. copyright and other laws. Unless in conjunction with business conducted with Jensen Precast, any use of Jensen Precast work product without express, written consent is prohibited, and recipient is prohibited from distributing any and all work product to non-approved third parties under penalty of civil action.

DESCRIPTION:	Utility Vault 96192 Layout Assembly SDGE 34002-01
PART NUMBER:	200024290
CREATED:	7/16/2019
LAYOUT DRAWING	
DRAWN BY:	J. Prado
MODIFIED:	1/19/2022

REV:	C-1
SHEET:	5
	2 OF 2