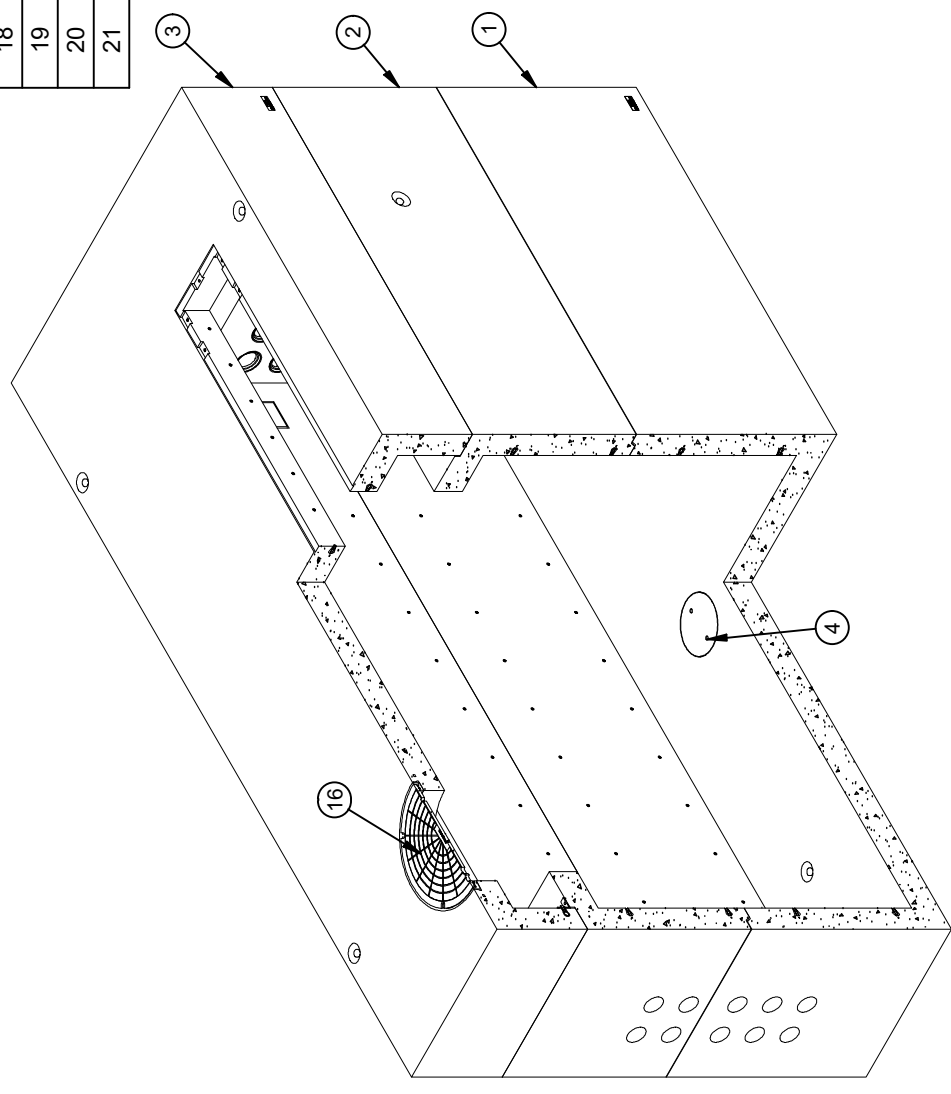


DESIGN NOTES

- DESIGNED IN ACCORDANCE WITH ASTM C-857 LOAD DESIGNATION A-16 (AASHTO HS-20-44) USING 5,500 PSI COMPRESSIVE STRENGTH CONCRETE AND 60,000 PSI YIELD STRENGTH ASTM A-706 STEEL REINFORCEMENT PER CALC.# 34406.
- MINIMUM EXCAVATION SIZE: 9'-2" X 20'-2" DEPTH REQ'D.
- FOR COMPLETE DESIGN AND PRODUCT INFORMATION CONTACT JENSEN PRECAST.
- VAULT TO BE PLACED ON A MIN. 6" BASE OF CRUSHER RUN FOR EASE OF INSTALLATION AND EVEN LOAD DISTRIBUTION.
- FINISH COATING: ALL INTERIOR WALLS AND CEILING SHALL BE PAINTED WHITE.
- ALL PARTS TO BE STENCILED: MFG DATE / JOB NUMBER / PRODUCT ID / WEIGHT.
- FOR OPTIONAL 6", 12" OR 18" ADAPTER PLATE SEE DWG. SC714-541-1-11

COAT INTERIOR WITH WHITE LATEX PAINT



ISOMETRIC VIEW

LIFTING NOTES

- THIS CONCRETE PRODUCT IS DESIGNED TO BE LIFTED WITH (4) EQUALLY LOADED RIGGINGS LEGS MIN. 60° SLING ANGLE, MEASURED FROM HORIZONTAL.
- | | |
|---------------|-------------------------------|
| BURY DEPTH: | 0.0' - 0.0' to Top of Section |
| WATER LEVEL: | 3.0' |
| DESIGN SPEC: | ASTM C857 |
| AGENCY: | EDISON |
| WEIGHT: | 77824.33 Lbs |
| LOADING SPEC: | A-16 (AASHTO HS20-44) |
| AGENCY SPEC: | TYPE 1 |

BILL OF MATERIALS

ITEM	UNIT QTY	QTY	PART NUMBER	DESCRIPTION	MASS (lbs)
1	1	1	200025761	Vault 842'16x48 Rect. Bottom Section EDISON TYPE 1 & TYPE 2	33917
2	1	1	200025762	Vault 842'16x42 Rect. Top Section 192" x 60" Terminators EDISON TYPE 1 & TYPE 2	22639
3	1	1	200025781	Vault 842'16x18 Rect. Top Section EDISON TYPE 1	20909
4	1	1	100006783	SUMP COVER FOR 13"SUMP(15"OD)GALV DIA PLATE	12
5	1	40	100008101	SCREW BUTT HEAD CAP 1/2-12 2 304SS	
6	1	40	100007134	WASHER FLAT 1/2 REGULAR TYPE A 316SS	
7	1	18	100011411	BOLT HEX 1/2-13 UNC 2.25 316SS	
8	1	12	100004023	BOLT HEX 1/2-13 UNC 1 316SS	
9	1	12	100004330	BOLT HEX 1/2-13 UNC 1.50 304SS	
10	1	12	100007135	WASHER FLAT 1/2 REGULAR TYPE A 304SS	
11	1	9	100002527	CABLE RACK 18 HOLE GALV TABS	2
12	1	6	100008133	ANGLE CLIP 3-1/2X3-1/2 1/4X3 316SS	
13	1	1	100005749	SEALANT JOINT BUTYL RUBBER ASTM C-990 AND M198 CS-102 1IN EQUIV X14.5FT PER BOX 118FT	
14	1	1	100008122	PLUG PICKHOLE NEOPRENE RUBBER CI COVER ED/LA	
15	1	1	100007108	GASKET 3/8 DIA NEOPRENE ONE PIECE	13
16	1	1	100006912	CI COVER 30DIA NF R-1581-0175 ASTM A48 CL35B BP B/D EDISON	224
17	1	4	100022758	GROUND ANCHOR BRACKET KIT HALO HB304R	2
18	1	4	100004320	BOLT HEX 1/2-13 UNC 1 304SS	
19	5,000 gal	5,000 gal	100006420	COATING PAINT LATEX WHITE	
20	1	2	100006069	STRUT SLOTTED C-CHANNEL 1-5/8 X 1-5/8 12GA BOLT-ON GALV 92IN	
21	1	2	100006059	STRUT SLOTTED C-CHANNEL 1-5/8 X 1-5/8 12GA BOLT-ON GALV 144IN	

REVISION HISTORY

REV	DESCRIPTION	DATE	APPROVED
D	UPDATED UNISTRUTS	2/12/2020	

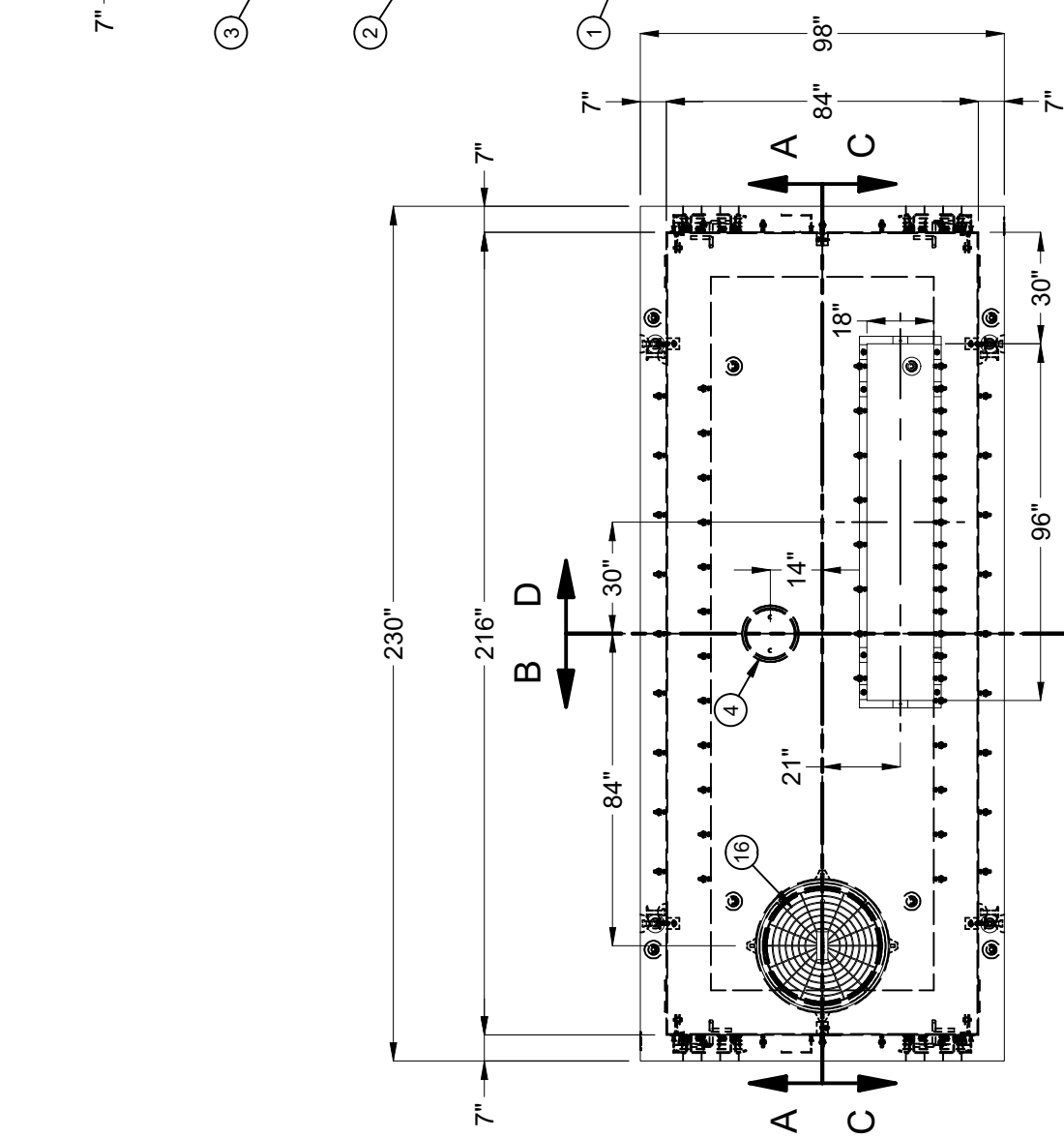
DESCRIPTION: Utility Vault 842'16 Layout Assembly EDISON TYPE 1

REV: D **118**

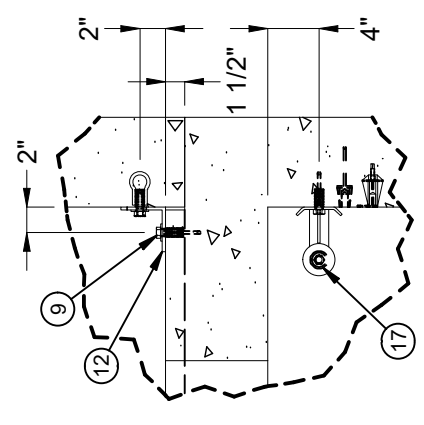
PART NUMBER: 200025810 LAYOUT REVIEW DRAWN BY: N. Chand SHEET: 1 OF 2

CREATED: 8/14/2019 MODIFIED: 2/12/2020

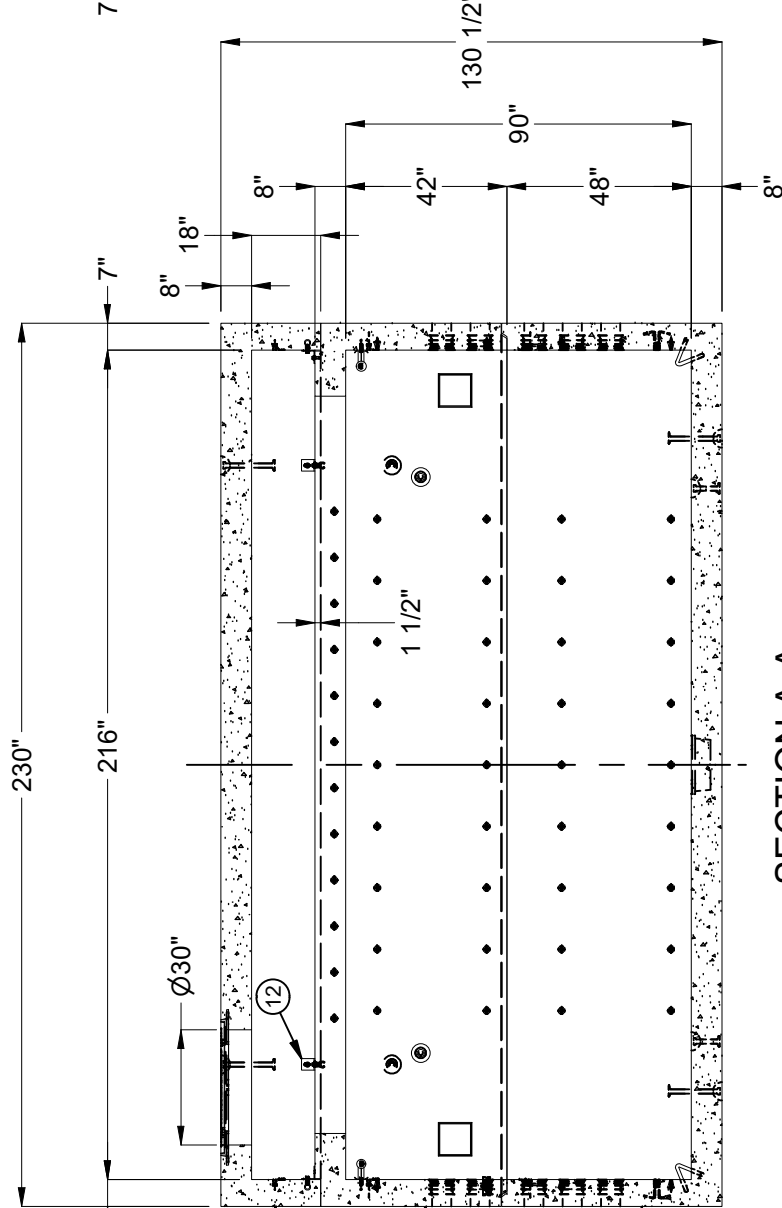
©2019 Jensen Precast-All rights reserved. All materials appearing as Jensen Precast documents and the like are proprietary work product and are protected under U.S. copyright and other laws. Unless in conjunction with business conducted with Jensen Precast, any use of Jensen Precast work product without express, written consent is prohibited, and recipient is prohibited from distributing any and all work product to non-approved third parties under penalty of civil action.



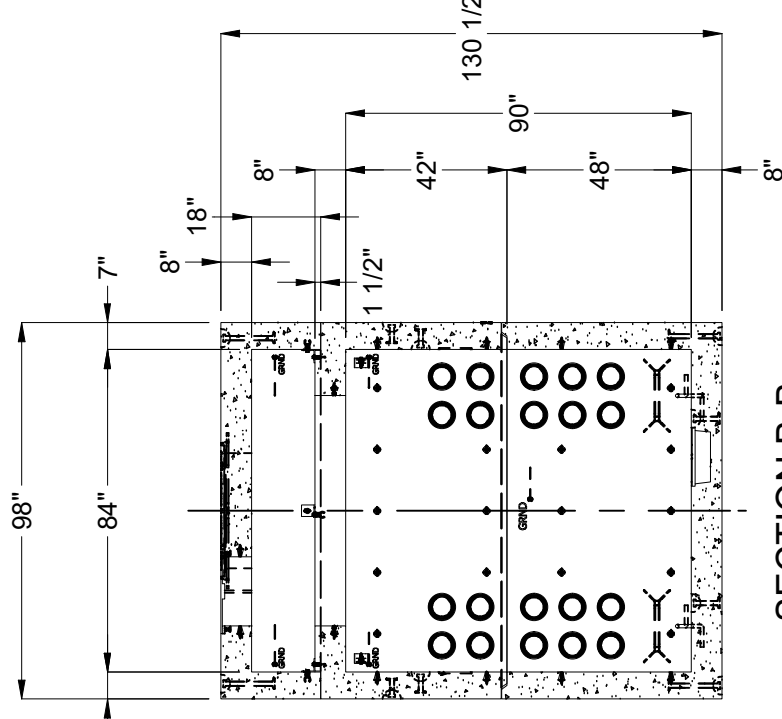
PLAN VIEW



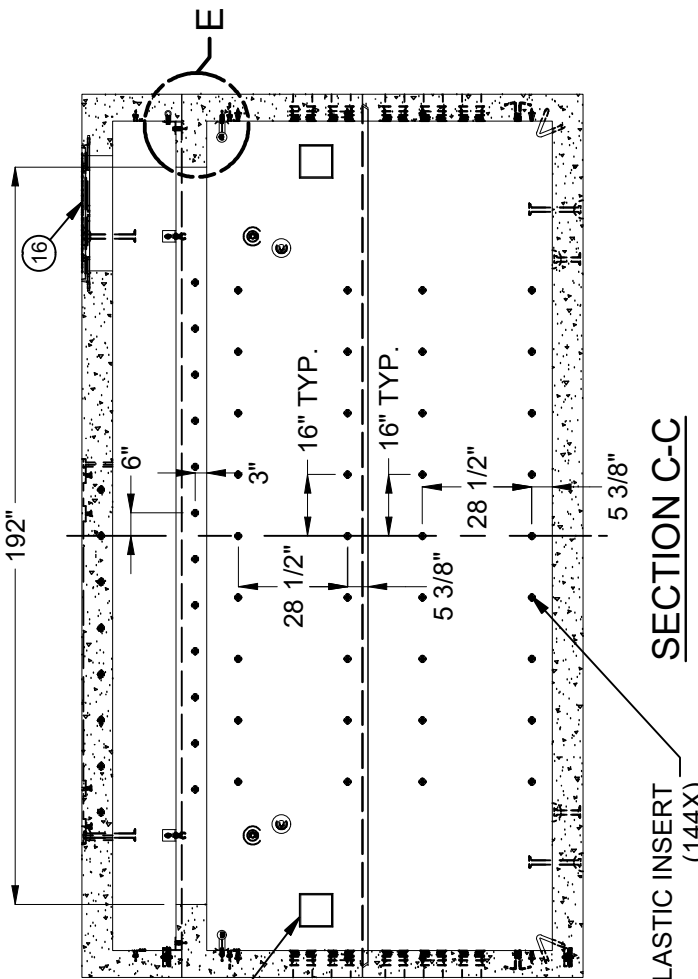
DETAIL E



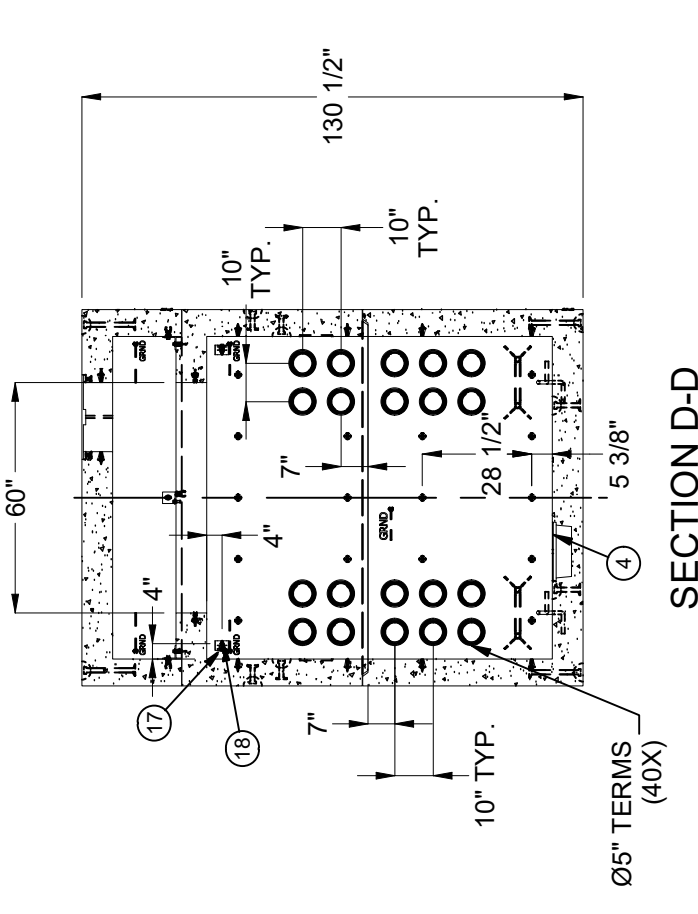
SECTION A-A



SECTION B-B



SECTION C-C



SECTION D-D

BURY DEPTH:	0.0' - 0.0' to Top of Section		
WATER LEVEL:	3.0'	WEIGHT:	77824.33 Lbs
DESIGN SPEC:	ASTM C857	LOADING SPEC:	A-16 (AASHTO HS20-44)
AGENCY:	EDISON	AGENCY SPEC:	TYPE 1

JENSEN PRECAST EST. 1968
 WWW.JENSENPRECAST.COM

©2019 Jensen Precast-All rights reserved. All materials appearing as Jensen Precast documents and the like are proprietary work product and are protected under U.S. copyright and other laws. Unless in conjunction with business conducted with Jensen Precast, any use of Jensen Precast work product without express, written consent is prohibited, and recipient is prohibited from distributing any and all work product to non-approved third parties under penalty of civil action.

DESCRIPTION:	Utility Vault 84216 Layout Assembly EDISON TYPE 1		
PART NUMBER:	200025810	LAYOUT DRAWING	DRAWN BY: N. Chand
CREATED:	8/14/2019	MODIFIED:	2/12/2020