

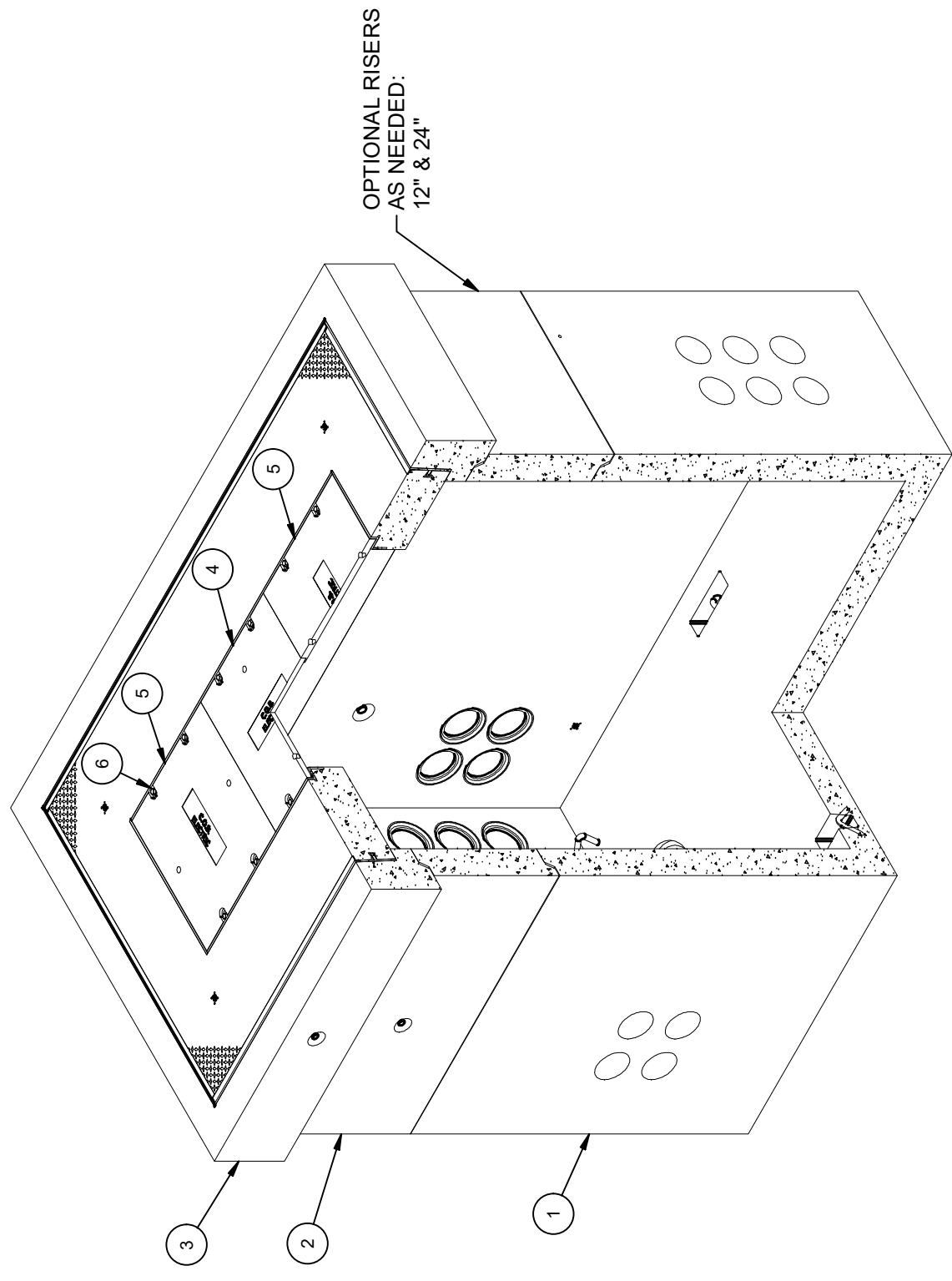
DESIGN NOTES

- DESIGNED IN ACCORDANCE WITH AASHTO HS20-44 TRAFFIC BRIDGE LOADING USING 5,500 PSI COMPRESSIVE STRENGTH CONCRETE AND 60,000 PSI YIELD STRENGTH ASTM A-706 STEEL REINFORCEMENT PER CALCS. #34462.
- MINIMUM EXCAVATION SIZE: 7' 6" X 11' 0" X DEPTH REQ'D.
- COVER DESIGN FOR TRAFFIC HS20 LOADING
- VAULT TO BE PLACED ON A MIN. 6" BASE OF CRUSHER RUN FOR EASE OF INSTALLATION AND EVEN LOAD DISTRIBUTION.
- FINISH COATING: ALL INTERIOR WALLS AND CEILING SHALL BE PAINTED WHITE.
- ALL PARTS TO BE STENCILED: MFG DATE / JOB NUMBER / PRODUCT ID / WEIGHT.
- EXTENSIONS ARE AVAILABLE IN THE FOLLOWING SIZES:
 A) PB586-R12 (100009550) WT. 2,146 lbs.
 B) PB586-R24 (200055860) WT. 4,325 lbs.
- FOR COMPLETE DESIGN AND PRODUCT INFORMATION CONTACT JENSEN PRECAST.

COAT INTERIOR SURFACE WITH
WHITE PAINT

BILL OF MATERIALS

ITEM	UNIT QTY	QTY	PART NUMBER	DESCRIPTION	MASS (lb)
1	1	1	200029807	Pull Box 60102x60 Rect. Bottom Section COB 600-56	14385
2	1	1	200055860	Riser 60102x24 Rect. Riser	4325
3	1	1	200055857	Utility Vault 60102 Assembly	6698
4	1	1	100032553	CI COVER 24X72 SBF A-1472-A ASTM A48 CL35B CENTER COB ELECTRIC	
5	1	2	100032555	CI COVER 24X72 SBF A-1472-B ASTM A48 CL-35B OUTER COB ELECTRIC	
6	1	12	100008105	PENTA BOLT 1/2-13 UNC 2-1/2 304SS W/CAPWASH	
7	1.000 ul	1.000 ul	100005749	SEALANT JOINT BUTYL RUBBER ASTM C-990 AND M198 CS-102 1IN EQUIV X14.5FT PER BOX 118FT	
8	2.000 gal	2.000 gal	100006420	COATING PAINT LATEX WHITE	



ISO VIEW

LIFTING NOTES

- INSTALLATION: THIS CONCRETE PRODUCT IS DESIGNED TO BE LIFTED AT 5,500 PSI WITH 4 LIFT CONNECTIONS EQUALLY LOADED TO 4 LIFTING POINTS AT A MINIMUM 60° SLING ANGLE, MEASURED FROM HORIZONTAL.
- BURY DEPTH: 0.0' - 0.0' to Top
- WATER LEVEL: 3.0'
- WEIGHT: 26186.9 Lbs
- DESIGN SPEC: ASTM C857, ACI 318
- LOADING SPEC: A-16 (AASHTO HS20-44)
- AGENCY SPEC: COB
- AGENCY: 600-55&56 Traffic

REVISION HISTORY		DATE	APPROVED
REV	DESCRIPTION		
C	REPLACED TOP & RISER SECTIONS WITH STANDARD MIX DESIGN	9/2/2021	

DESCRIPTION: Pull Box 60102 Layout Assembly COB 600-55&56 Traffic

REV: C-1

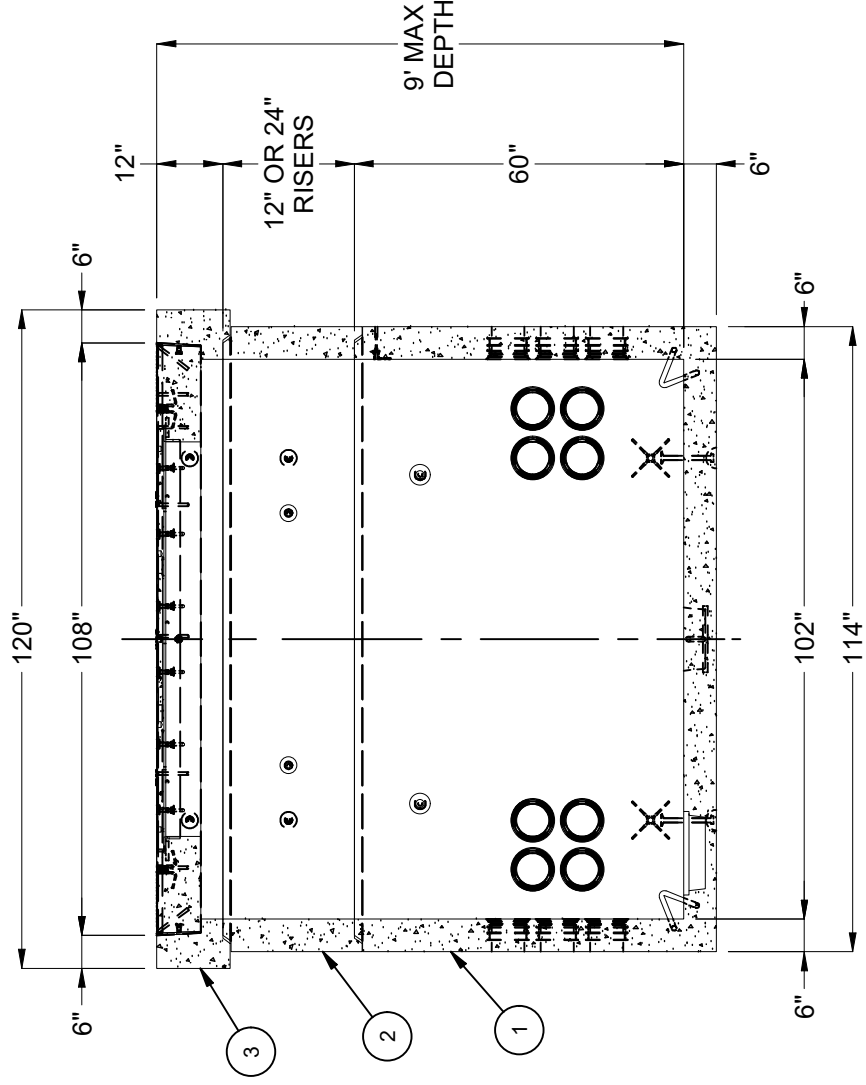
PART NUMBER: 200029758 LAYOUT REVIEW SHEET: 5

CREATED: 9/25/2019 DRAWN BY: J. Prado 1 OF 2

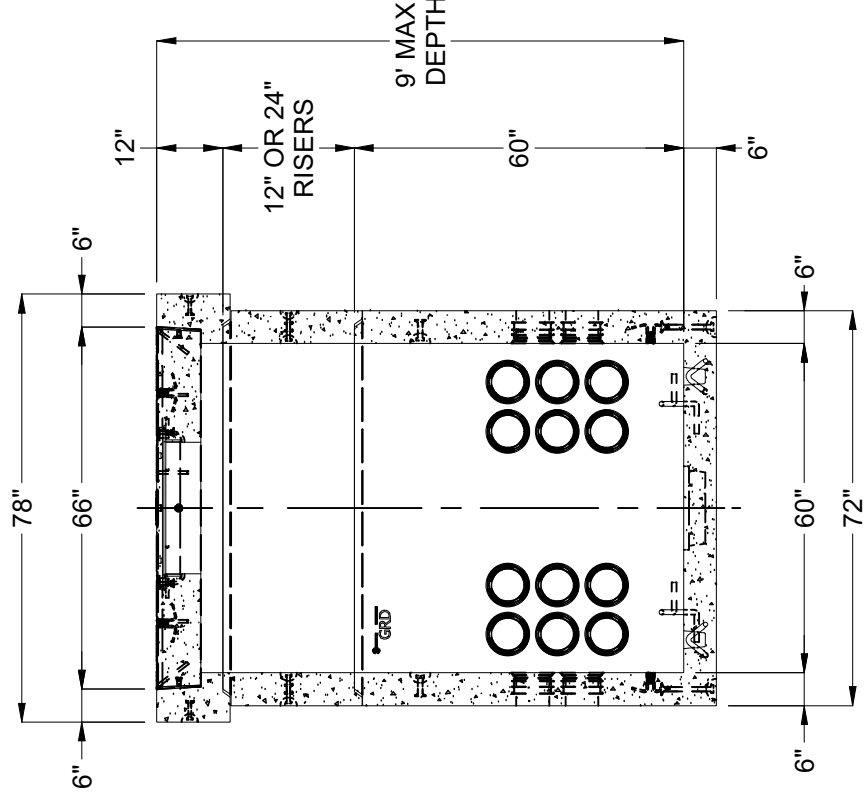
MODIFIED: 9/2/2021

JENSEN PRECAST EST. 1968
 WWW.JENSENPRECAST.COM

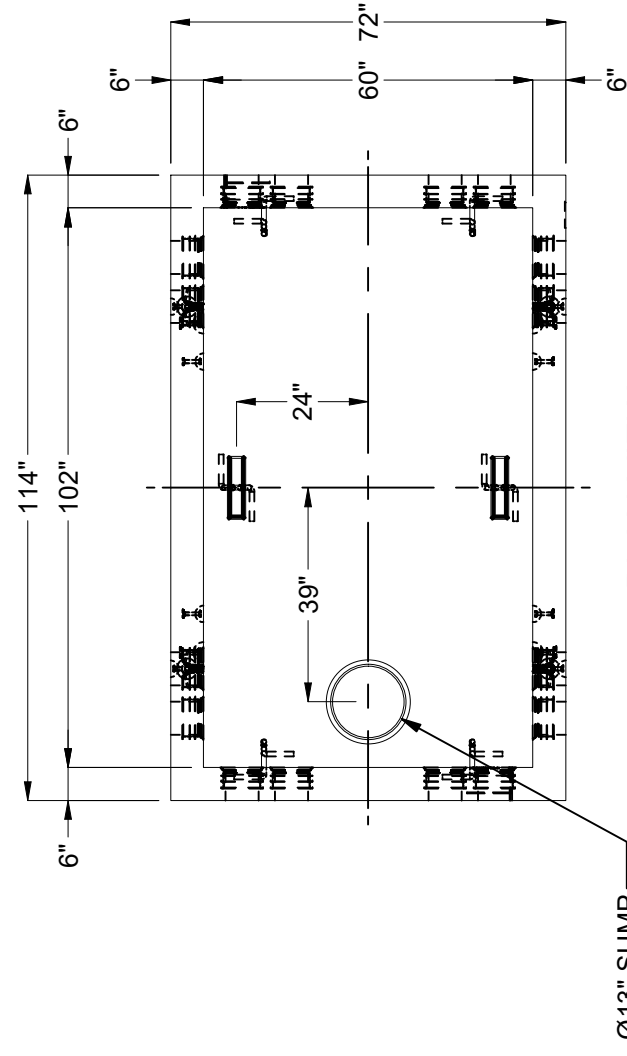
©2019 Jensen Precast. All rights reserved. All materials appearing as Jensen Precast documents and the like are proprietary work product and are protected under U.S. copyright and other laws. Unless in conjunction with business conducted with Jensen Precast, any use of Jensen Precast work product without express, written consent is prohibited, and recipient is prohibited from distributing any and all work product to non-approved third parties under penalty of civil action.



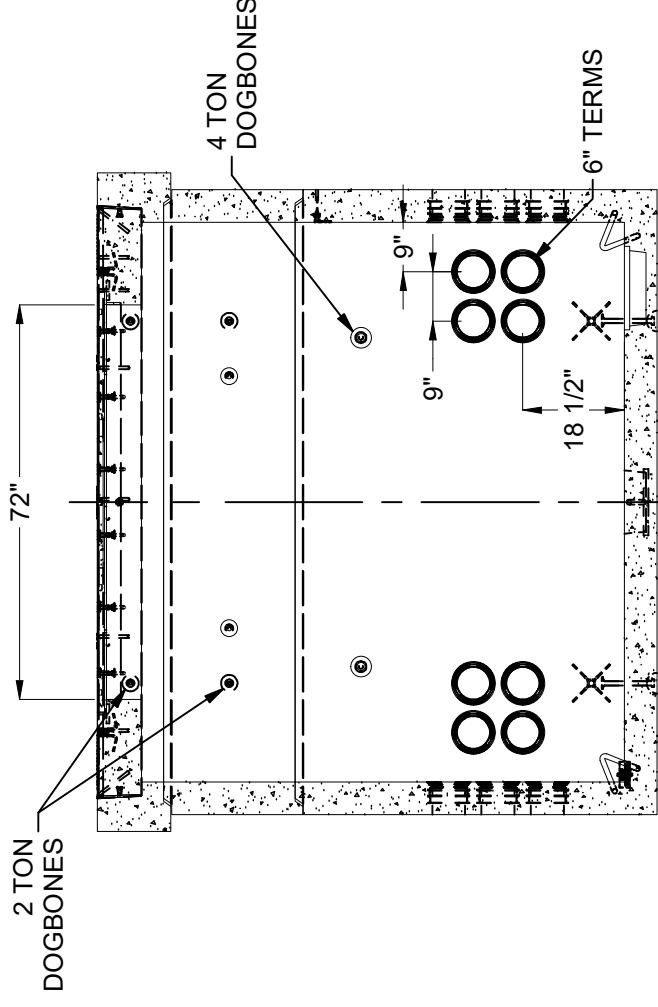
SECTION A-A



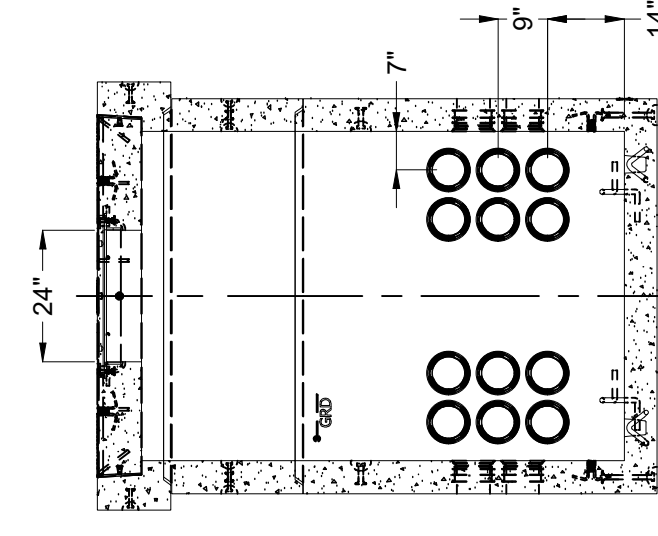
SECTION B-B



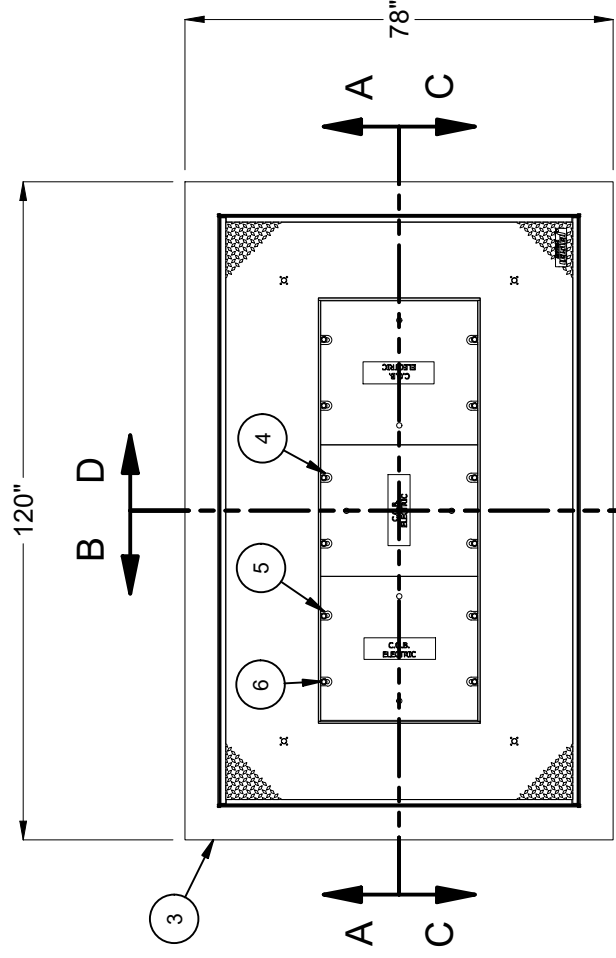
PLAN VIEW
SWITCH ENCLOSURE W/O NECK & COVER



SECTION C-C



SECTION D-D



PLAN VIEW
NECK & COVER

BURY DEPTH:	0.0' - 0.0' to Top
WATER LEVEL:	3.0'
DESIGN SPEC:	ASTM C857, ACI 318
AGENCY:	COB
WEIGHT:	26186.9 Lbs
LOADING SPEC:	A-16 (AASHTO HS20-44)
AGENCY SPEC:	600-55&56 Traffic

JENSEN PRECAST EST. 1968
WWW.JENSENPRECAST.COM

©2019 Jensen Precast. All rights reserved. All materials appearing as Jensen Precast documents and the like are proprietary work product and are protected under U.S. copyright and other laws. Unless in conjunction with business conducted with Jensen Precast, any use of Jensen Precast work product without express, written consent is prohibited, and recipient is prohibited from distributing any and all work product to non-approved third parties under penalty of civil action.

DESCRIPTION:	Pull Box 60102 Layout Assembly COB 600-55&56 Traffic
LAYOUT DRAWING	
PART NUMBER:	200029758
CREATED:	9/25/2019
DRAWN BY:	J. Prado
MODIFIED:	9/2/2021