

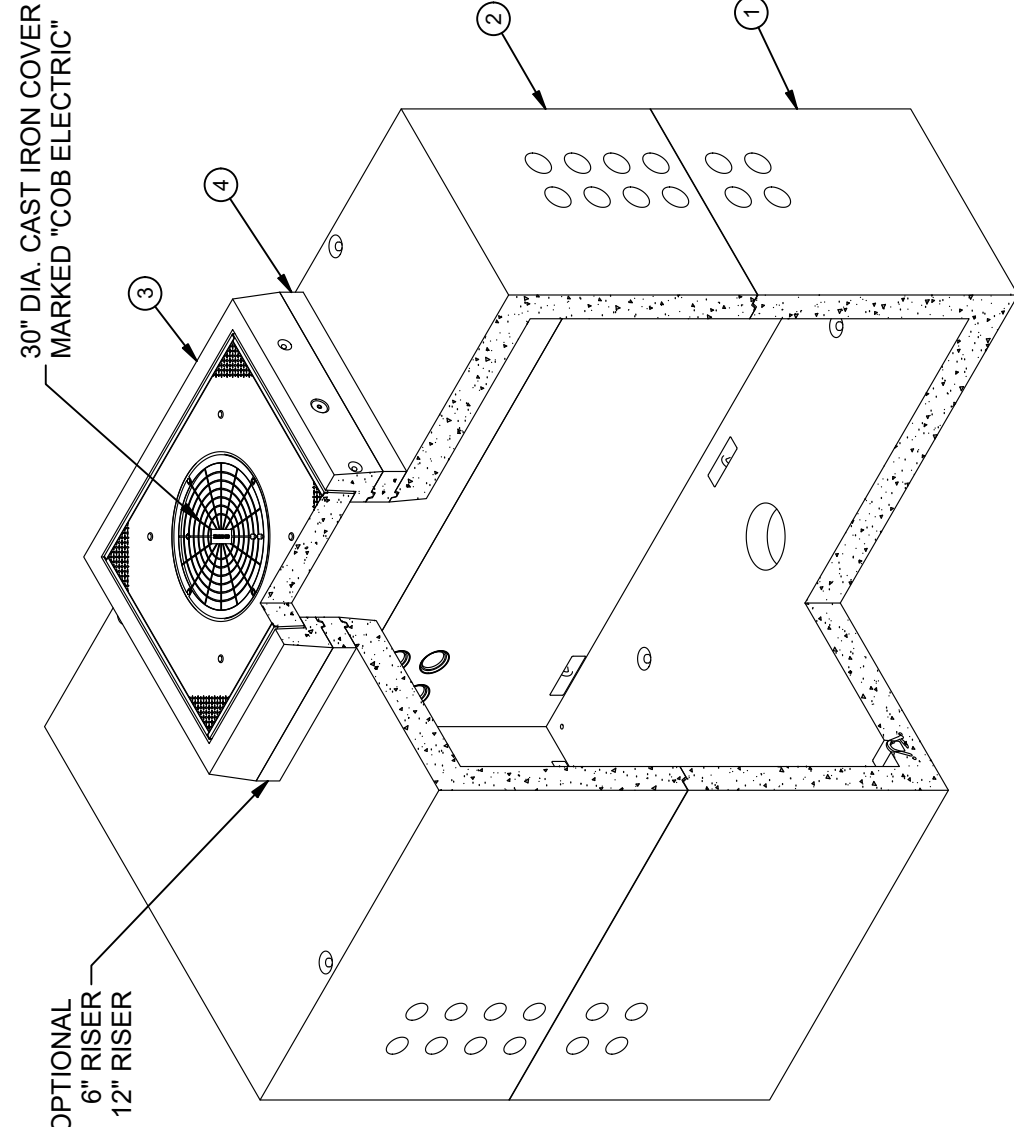
DESIGN NOTES

- DESIGNED IN ACCORDANCE WITH C-857 LOADING USING 5,500 PSI COMPRESSIVE STRENGTH CONCRETE AND 60,000 PSI YIELD STRENGTH ASTM A-706 STEEL REINFORCEMENT PER CALCS. #31008
- LIMIT OF COVER OVER ROOF SECTION IS 1'-6" TO 4'-0".
- COVER DESIGN FOR TRAFFIC LOADING.
- MINIMUM EXCAVATION SIZE: 10'-2" X 16'-2" X DEPTH REQ'D.
- ALL PARTS TO BE STENCILED: MFG DATE / JOB NUMBER / PRODUCT ID / WEIGHT.
- VAULT TO BE PLACED ON A MIN. 8" BASE OF CRUSHER RUN FOR EASE OF INSTALLATION AND EVEN LOAD DISTRIBUTION.
- FOR COMPLETE DESIGN AND PRODUCT INFORMATION CONTACT JENSEN PRECAST.

BILL OF MATERIALS

ITEM	UNIT QTY	QTY	PART NUMBER	DESCRIPTION	MASS (lb.)
1	1	1	200034610	Vault 96168x56 Rect. Bottom Section COB 600-57	34258
2	1	1	200034611	Vault 96168x56 Rect. Top Section 4860 C COB 600-57	31051
3	1	1	200029812	Vault 4860 Assembly COB 600-58	3970
4	1	1	200012851	Vault 4860x6 Rect. Riser	1168
5	1	8	100007136	WASHER FLAT 3/4 REGULAR TYPE A ZINC	
6	1	4	100009239	ROD THREADED COIL YELLOW DIP 3/4 X 10-1/2"	
7	1	8	100007010	HEX COIL NUT 3/4-4.5 POST YELLOW DIP	
8	1,000 ul	1,000 ul	100005749	SEALANT JOINT BUTYL RUBBER ASTM C-990 AND M198 CS-102 1IN EQUIV X14.5FT PER BOX 118FT	

OPTIONAL 6" RISER  
12" RISER



ISOMETRIC VIEW

LIFTING NOTES

- THIS CONCRETE PRODUCT IS DESIGNED TO BE LIFTED WITH (4) EQUALLY LOADED RIGGINGS LEGS MIN. 60° SLING ANGLE, MEASURED FROM HORIZONTAL.
- |               |                               |
|---------------|-------------------------------|
| BURY DEPTH:   | 1.5' - 4.0' to Top of Section |
| WATER LEVEL:  | 3.0'                          |
| DESIGN SPEC:  | ASTM C857                     |
| AGENCY:       | COB                           |
| WEIGHT:       | 70453.53 Lbs                  |
| LOADING SPEC: | A-16 (AASHTO HS20-44)         |
| AGENCY SPEC:  | 600-57 & 58                   |

REVISION HISTORY

REV	DESCRIPTION	DATE	APPROVED
A	INITIAL RELEASE	2/20/2020	

DESCRIPTION: Utility Vault 96168 Layout Assembly COB 600-57 & 58

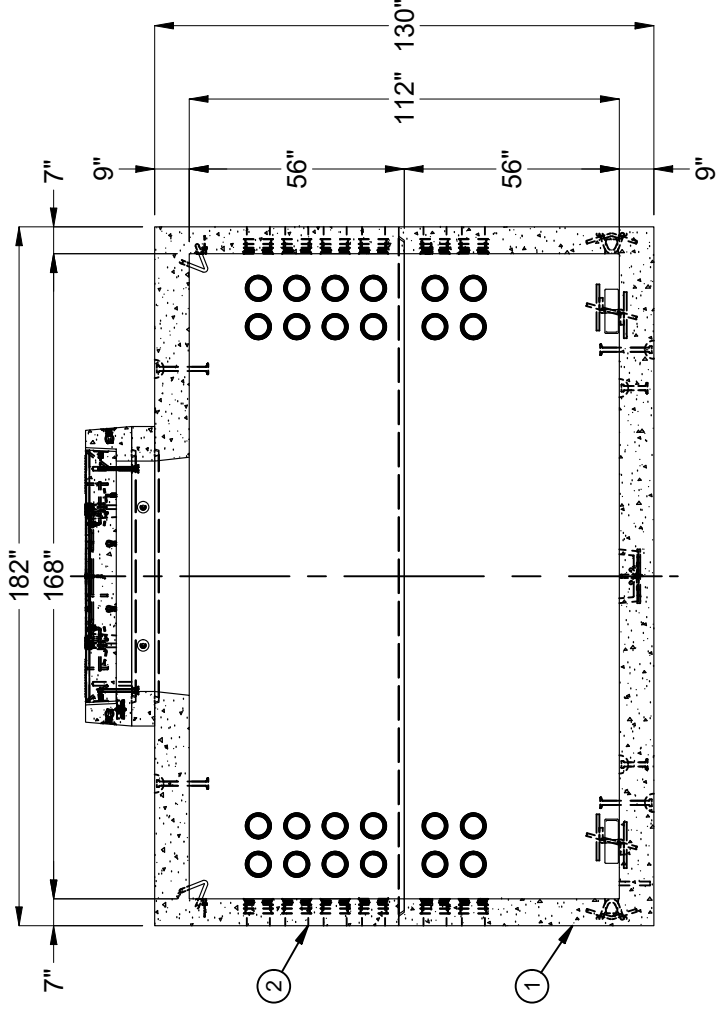
REV: A 12

SHEET: 1 OF 2

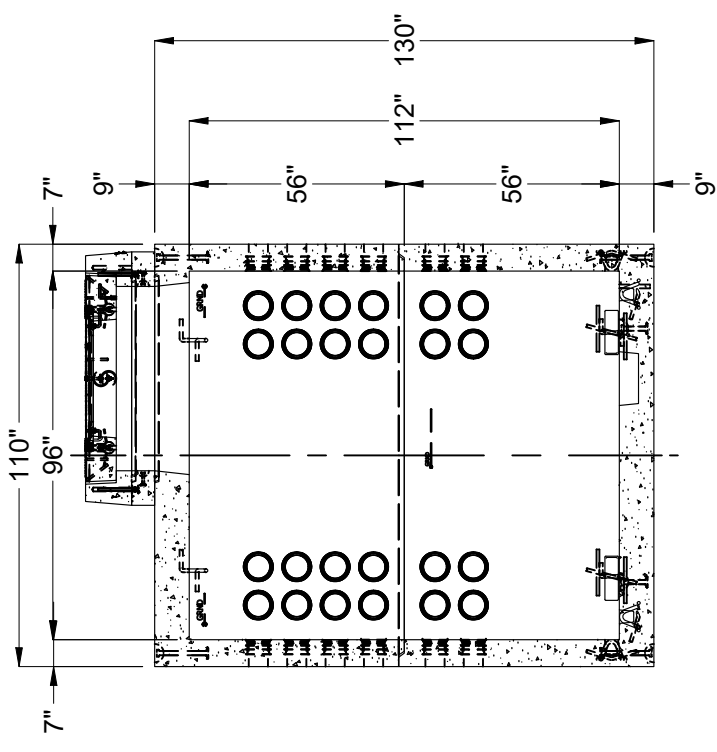
PART NUMBER: 200034613 LAYOUT REVIEW  
DRAWN BY: S. Woods

CREATED: 2/6/2019  
MODIFIED: 2/20/2020

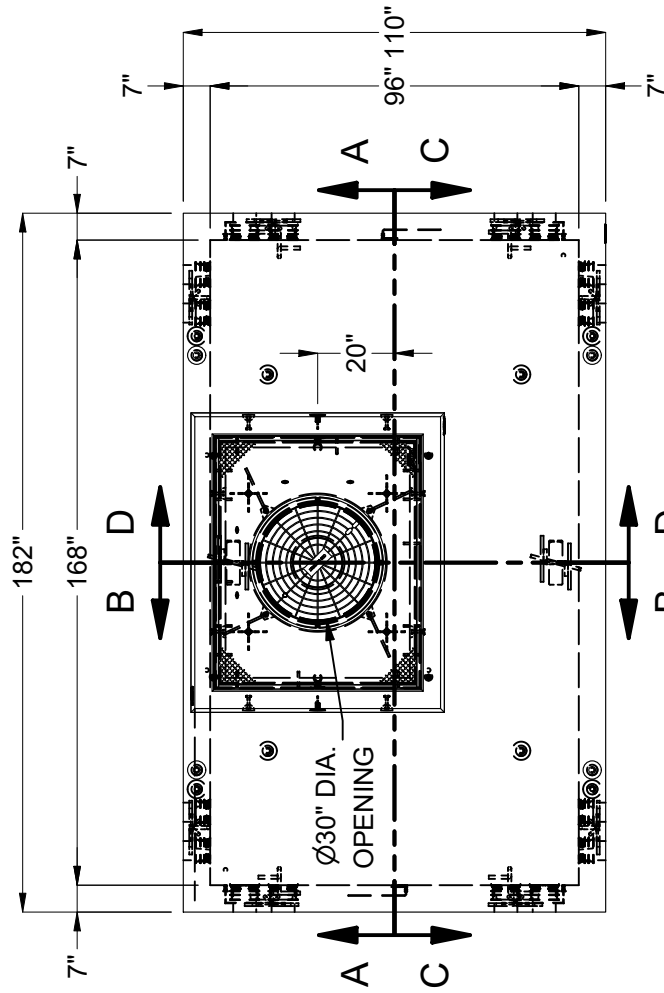
©2018 Jensen Precast. All rights reserved. All materials appearing as Jensen Precast documents and the like are proprietary work product and are protected under U.S. copyright and other laws. Unless in conjunction with business conducted with Jensen Precast, any use of Jensen Precast work product without express, written consent is prohibited, and recipient is prohibited from distributing any and all work product to non-approved third parties under penalty of civil action.



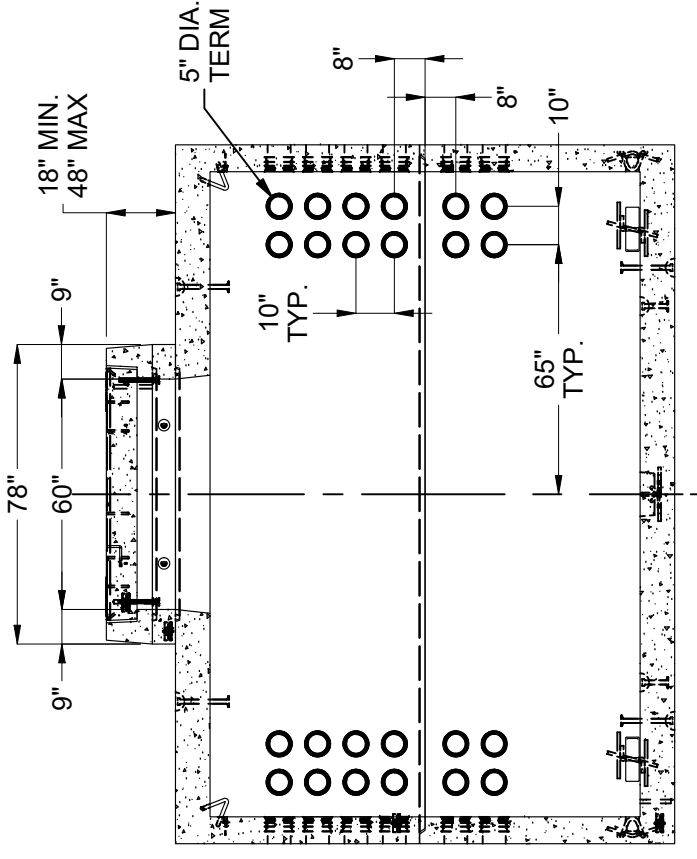
SECTION A-A



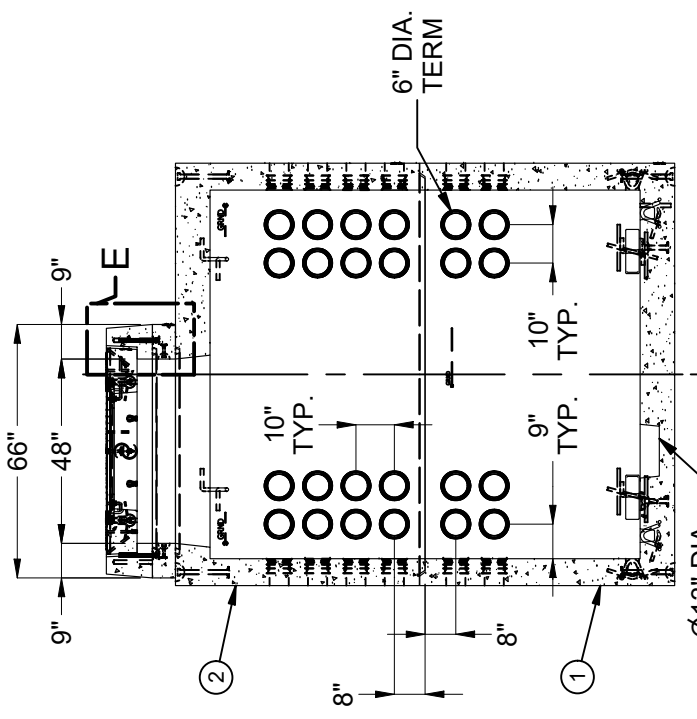
SECTION B-B



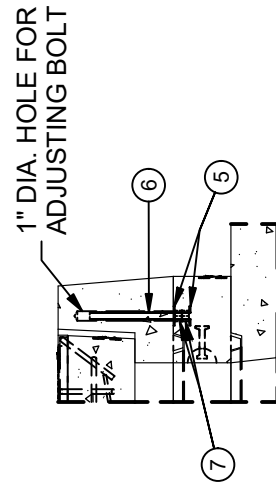
PLAN VIEW



SECTION C-C



SECTION D-D



DETAIL E

IF NEEDED TO ADJUST TO FINISH GRADE

BURY DEPTH:	1.5' - 4.0' to Top of Section
WATER LEVEL:	3.0'
DESIGN SPEC:	ASTM C857
AGENCY:	COB
WEIGHT:	70453.53 Lbs
LOADING SPEC:	A-16 (AASHTO HS20-44)
AGENCY SPEC:	600-57 & 58

**JENSEN PRECAST** EST. 1968  
 WWW.JENSENPRECAST.COM

©2018 Jensen Precast. All rights reserved. All materials appearing as Jensen Precast documents and the like are proprietary work product and are protected under U.S. copyright and other laws. Unless in conjunction with business conducted with Jensen Precast, any use of Jensen Precast work product without express, written consent is prohibited, and recipient is prohibited from distributing any and all work product to non-approved third parties under penalty of civil action.

DESCRIPTION:	Utility Vault 96168 Layout Assembly COB 600-57 & 58
LAYOUT DRAWING	
PART NUMBER:	200034613
DRAWN BY:	S. Woods
CREATED:	2/6/2019
MODIFIED:	2/20/2020