

NOTES:

- STANDARDS. AASHTO LRFD BRIDGE DESIGN SPECIFICATIONS, 8TH EDITION, WITH 2022 CALTRANS AMENDMENTS, CITY OF LOS ANGELES BUREAU OF ENGINEERING STANDARD PLAN S-601, LATEST, MANUAL PART H, ASTM C-857. STRUCTURAL CALCS: #33654.
- MATERIAL. CONCRETE, F_c=5,500 PSI. MIX TO INCLUDE FLY ASH. REINFORCEMENT PER ASTM A-706, F_y=60,000.
- LOADS. VERTICAL LIVE LOAD: 300 PSF. LIVE LOAD SURCHARGE: GREATEST OF: LA BOE PART H, FIGURE H 374.2A. MINIMUM 80 PSF (TO BOTTOM OF VAULT) OR LADWP P178 (104 PSF). SOIL LATERAL LOADS: 40 PCF (DRY), 81 PCF (SATURATED), SATURATED SOIL CONDITIONS 3'-0" BELOW GRADE. SOIL BEARING CAPACITY = 1,500 PSF. DESIGN SOIL DENSITY IS 120 PCF.
- LOADS NOT INCLUDED. DESIGN DOES NOT INCLUDE COOPER E-80 RAILROAD LOADS OR LATERAL OR SURCHARGE LOADS THAT ARE PRODUCED BY FOOTING OR FOUNDATIONS ADJACENT TO THE STRUCTURE. THIS SUBSTRUCTURE SHALL BE KEPT AT LEAST IN A 1:1 RATIO AWAY FROM ALL FOOTINGS AND FOUNDATIONS, UNLESS THE ENGINEER OF RECORD APPROVES IN WRITING.
- INSTALLATION. VAULT TO BE PLACED ON A MIN. 6" BASE OF CRUSHER RUN FOR EASE OF INSTALLATION AND EVEN LOAD DISTRIBUTION. BASE MATERIAL IN ACCORDANCE WITH SECTION 200-2 OF THE SSPWC (GREEN BOOK).
- END WALL KNOCKOUTS ARE INTENDED TO BE REMOVED. CONCRETE TO BE POURED/BACKFILLED FULL HEIGHT OF DUCTED ENDWALL KNOCKOUTS PER LADWP DIRECTION.
- INSTALLATION LIMITS. TOP OF VAULT SHALL BE AT GRADE.
- THIS VAULT CAN ACCOMMODATE 6,000 LBS EQUIPMENT ON BASE SLAB.
- EACH CONCRETE SECTION SHALL BE MARKED ON THE INSIDE & OUTSIDE WITH "JENSEN PRECAST", THE DESIGNATION "DWI/FA-CN", AND THE DATE OF THE POUR.
- EACH CONCRETE SECTION SHALL HAVE CAST-IN ON THE INSIDE "JENSEN", THE YEAR, AND THE DESIGNATION "FA-CN".
- MINIMUM EXCAVATION SIZE: 6'-0" X 9'-9" X DEPTH REQD.
- ADDITIONAL SUBMITTAL, PERMIT AND CONSTRUCTION PLAN REVIEW WILL BE REQUIRED FOR EACH PROJECT LOCATION. SUBMIT TO CITY ENGINEERS FOR APPROVAL PRIOR TO START OF ANY CONSTRUCTION.
- ALL INSTALLATIONS SHALL COMPLY WITH ALL OTHER LOCAL GOVERNING CODES AND REGULATION INCLUDING CALIFORNIA PUBLIC UTILITIES COMMISSION REGULATIONS.
- ALL PARTS TO BE STENCILED: MFG DATE / JOB NUMBER / PRODUCT ID / WEIGHT.

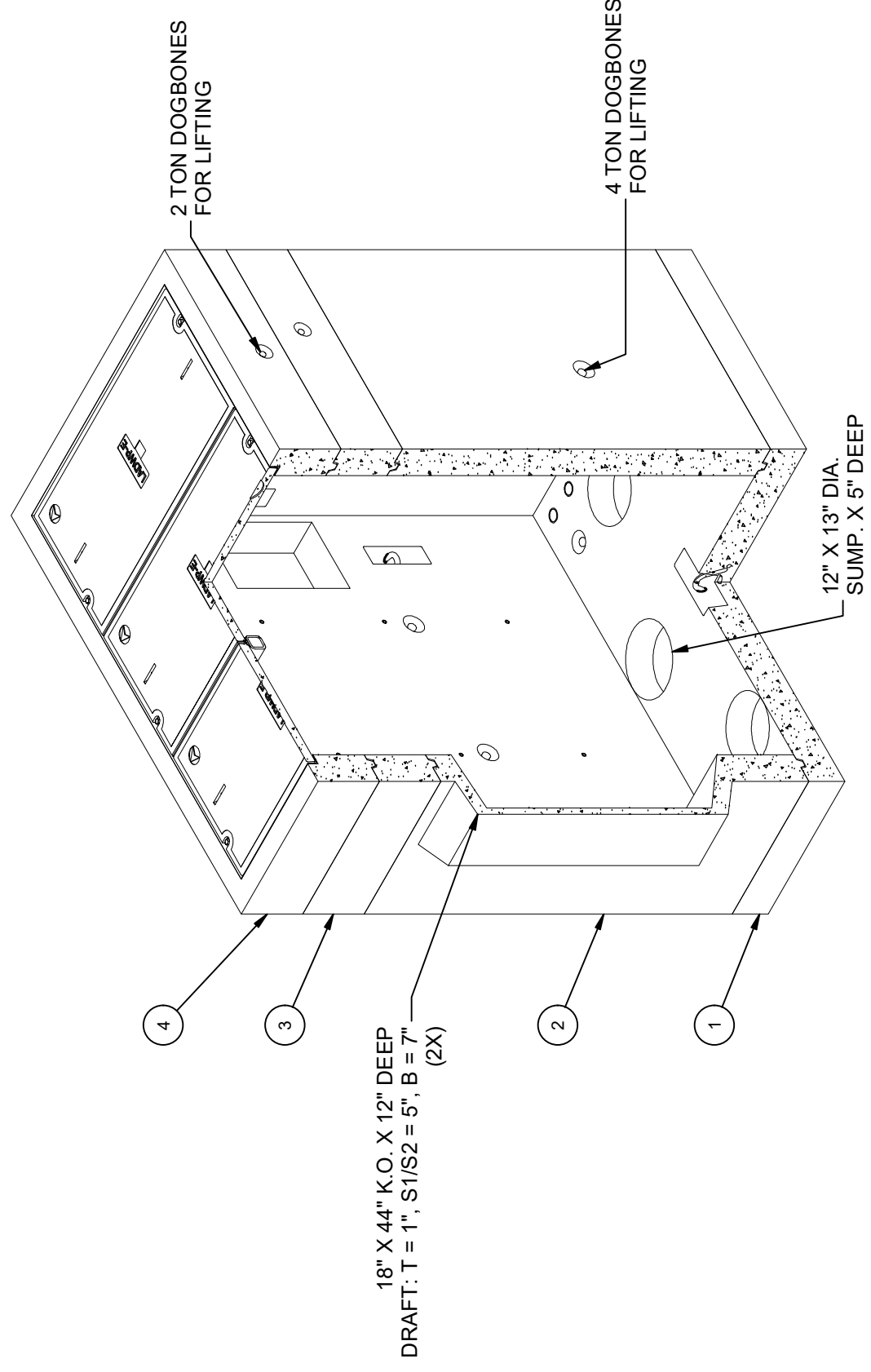
**STOCKPILE - JENSEN PRECAST
CITY OF LOS ANGELES INSPECTION
REQUIRED WO# C0034604**

LIFTING NOTES

FIELD INSTALLATION: PLANT DEMOLDING: MINIMUM HANDLING CONCRETE STRENGTH F _c = 5500 PSI RIGGING EQUALIZER REQUIRED TO EQUALIZE LOAD TO 4 LIFTING POINTS WITH A SLING ANGLE BETWEEN 60° AND 90°	
BURY DEPTH:	0.0' - 0.0' to Top
WATER LEVEL:	3.0'
DESIGN SPEC:	AASHTO LRFD, ASTM C857
AGENCY:	LADWP
APPROX. WEIGHT:	16593.7 Lbs
LOADING SPEC:	A-16 (AASHTO HS20-44)
AGENCY SPEC:	G-286 G1 REV-31, COLA

BILL OF MATERIALS

ITEM	UNIT QTY	QTY	PART NUMBER	DESCRIPTION	MASS (lb)
1	1	1	200039549	Vault 4878x7 Slab Bottom Sump LADWP G-286 G1 REV-31, COLA	3065
2	1	1	200039550	Riser 4878x72 Knockout LADWP G-286 G-1 REV-31, COLA	9245
3	1	1	200076372	Riser 4878x12 LADWP G-286 G1 REV-31 COLA	1710
4	1	1	200039551	Top Riser 4878x12 Assembly LADWP G-286 G-1 REV-31, COLA	2569
5	1.000 ul	1.000 ul	100005749	SEALANT JOINT BUTYL RUBBER ASTM C-990 AND M198 CS-102	
6	1	4	100002604	1IN EQUIV X14.5FT PER BOX 118FT	
7	1	4	100003766	HEX NUT 3/4-10 UNC PLAIN	
8	1	4	100007139	BOLT HEX 3/4-10 UNC 6 PLAIN	
				WASHER FLAT 3/4 HEAVY SAE ZINC	



ISO VIEW

REVISION HISTORY

REV	DESCRIPTION	DATE	APPROVED
D-4	ADDED 12" RISER	6/29/2023	

DESCRIPTION: Vault Layout 4878x96 LADWP G-286 G1 REV-31, COLA

REV:	D-5
SHEET:	4
1 OF 3	
PART NUMBER:	200039548
CREATED:	6/27/2019
DRAWN BY:	D. Mejia
MODIFIED:	6/29/2023



JENSEN PRECAST EST. 1968
WWW.JENSENPRECAST.COM

©2023 Jensen Precast-All rights reserved. All materials appearing as Jensen Precast documents and the like are proprietary work product and are protected under U.S. copyright and other laws. Unless in conjunction with business conducted with Jensen Precast, any use of Jensen Precast work product without express, written consent is prohibited, and recipient is prohibited from distributing any and all work product to non-approved third parties under penalty of civil action.

200039548 (DWG)

