

NOTES:

- STANDARDS. AASHTO LRFD BRIDGE DESIGN SPECIFICATIONS, 8TH EDITION, WITH 2022 CALTRANS AMENDMENTS, CITY OF LOS ANGELES BUREAU OF ENGINEERING STANDARD PLAN S-601, LATEST, MANUAL PART H, LADWP P 178, ASTM C-857. STRUCTURAL CALCS FOR BOX: #33718B.
- MATERIAL. CONCRETE, F'c=5,500 PSI. MIX TO INCLUDE FLY ASH AND DCI. REINFORCEMENT PER ASTM A-706, Fy=60,000.
- LOADS. VERTICAL LIVE LOAD: AASHTO HL-93. LIVE LOAD SURCHARGE: PER LA BOE PART H, FIGURE H 374.2A. MINIMUM 80 PSF (TO BOTTOM OF VAULT) OR LADWP P 178 (104 PSF). SOIL LATERAL LOADS: 40 PCF (DRY), 81 PCF (SATURATED). SATURATED SOIL CONDITIONS 3'-0" BELOW GRADE. SOIL BEARING CAPACITY = 1,500 PSF. DESIGN SOIL DENSITY IS 120 PCF.
- LOADS NOT INCLUDED. DESIGN DOES NOT INCLUDE COOPER E-80 RAILROAD LOADS OR LATERAL OR SURCHARGE LOADS THAT ARE PRODUCED BY FOOTING OR FOUNDATIONS ADJACENT TO THE STRUCTURE. THIS SUBSTRUCTURE SHALL BE KEPT AT LEAST IN A 1:1 RATIO AWAY FROM ALL FOOTINGS AND FOUNDATIONS, UNLESS THE ENGINEER OF RECORD APPROVES IN WRITING.
- INSTALLATION. VAULT TO BE PLACED ON WELL COMPACTED SOIL WITH MIN. 6" DEPTH OF TAMPED CRUSHED AGGREGATE BASE FOR EASE OF INSTALLATION AND EVEN LOAD DISTRIBUTION USING A VIBRATORY PLATE COMPACTOR IN A MIN. OF TWO PASSES. BASE TO EXTEND 12" BEYOND THE STRUCTURE. BASE MATERIAL IN ACCORDANCE WITH SECTION 200-2.2 OF THE SSPWC (GREEN BOOK) PER LADWP SPECIFICATION NO. 104.
- VAULTS LONGITUDINAL DIRECTION (22' LENGTH) SHALL BE INSTALLED PARALLEL TO THE TRAVEL DIRECTION OF THE STREET TO AVOID INTERFERENCE WITH ADJACENT UTILITIES.
- EACH CONCRETE SECTION SHALL BE MARKED ON THE INSIDE & OUTSIDE WITH "JENSEN PRECAST", THE DESIGNATION "DWPI/FA-CN", AND THE DATE OF THE POUR.
- EACH CONCRETE SECTION SHALL HAVE CAST-IN ON THE INSIDE "JENSEN", THE YEAR, AND THE DESIGNATION "FA-CN".
- NO SHARP OR ROUGH EDGES ON THE TERMINATORS ENTERING THE VAULT.
- K45-VN12-12T VAULT NECK AND COVER, WITH APPROVED CAST IRON COVER TO BE USED WITH THIS VAULT.
- EACH PIECE TO BE STENCILLED WITH ITS PART NO.
- MINIMUM EXCAVATION SIZE: 11'-0" X 25'-0" X DEPTH REQ'D.
- KPKINT-H172-12-G1-A-OP1, 200037400-INTERCEPT PACKAGE PLACED BY OTHERS.
- ADDITIONAL SUBMITTAL, PERMIT AND CONSTRUCTION PLAN REVIEW WILL BE REQUIRED FOR EACH PROJECT LOCATION. SUBMIT TO CITY ENGINEERS FOR APPROVAL PRIOR TO START OF ANY CONSTRUCTION.
- ALL INSTALLATIONS SHALL COMPLY WITH ALL OTHER LOCAL GOVERNING CODES AND REGULATION INCLUDING CALIFORNIA PUBLIC UTILITIES COMMISSION REGULATIONS.

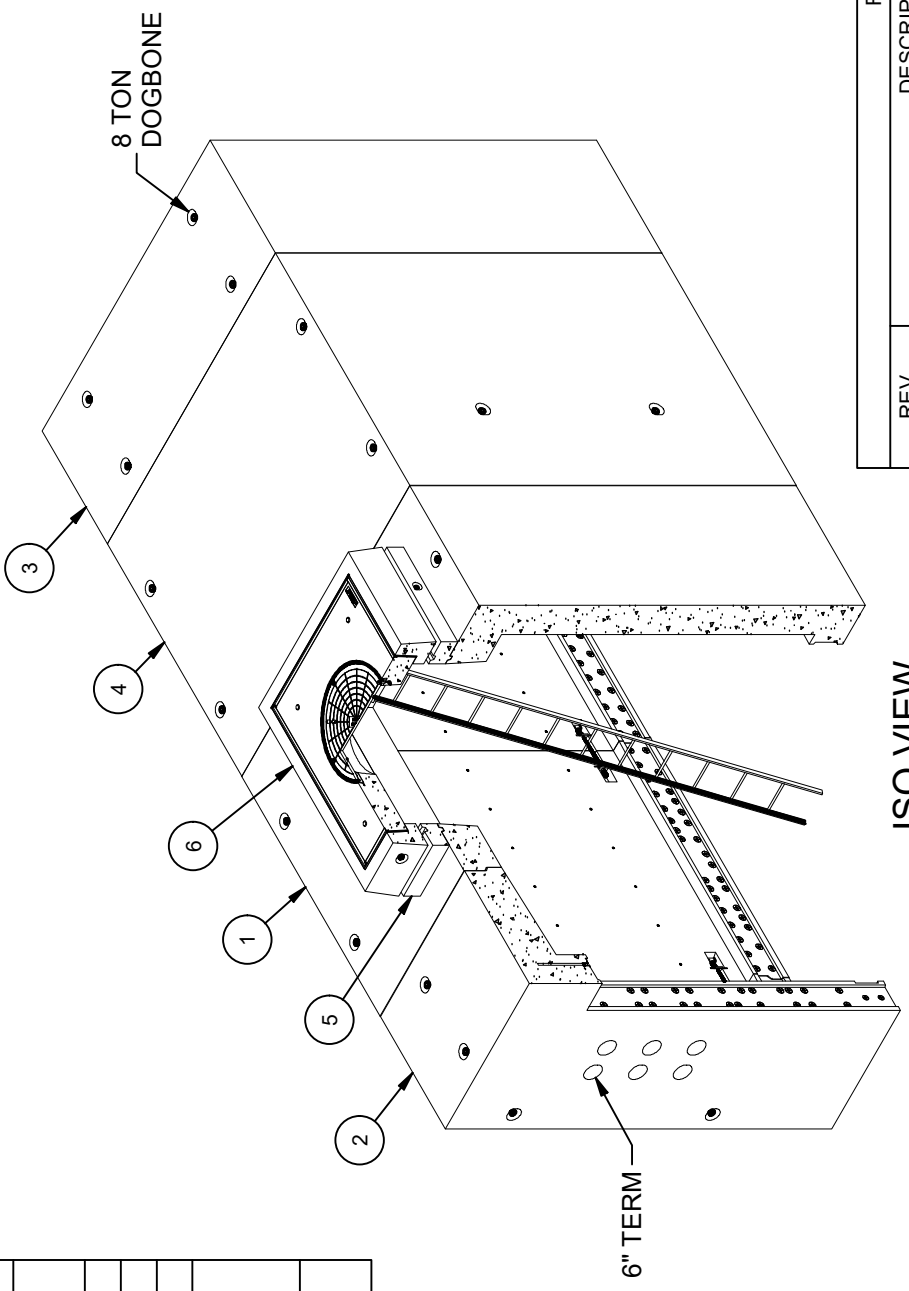
LIFTING NOTES

■ THIS CONCRETE PRODUCT IS DESIGNED TO BE LIFTED WITH 4 EQUALLY LOADED RIGGINGS LEGS MIN. 90° SLING ANGLE, MEASURED FROM HORIZONTAL.

BURY DEPTH:	1.5' - 4.0' to Top
WATER LEVEL:	3.0'
DESIGN SPEC:	AASHTO LRFD, ACI 318
AGENCY:	LADWP
APPROX. WEIGHT:	131373.01 Lbs
LOADING SPEC:	AASHTO HL-93
AGENCY SPEC:	H-172 G-1A-22' OP1

BILL OF MATERIALS

ITEM	UNIT QTY	QTY	PART NUMBER	DESCRIPTION	MASS (lb)
1	1	1	100013865	Tunnel Vault Intercept TVI96112 Center - Groove Groove 96Wx112Hx96L LADWP H-172 G-1A	36278
2	1	1	200047863	Tunnel Vault Intercept TVI96112 End - Tongue 96Wx112Hx36L LADWP TypeA H-172 G-1A OP1	25197
3	1	1	200047865	Tunnel Vault Intercept TVI96112 End - Tongue 96Wx112Hx36L Terminators, Slot LADWP H-172 G-1A OP1	25199
4	1	1	200047919	Tunnel Vault Intercept TVI96112 Extension 96Wx112Hx96L LADWP H-172 G-1A	39169
5	1	1	200012851	Riser 4860X6 LADWP 1-802 2B	1169
6	1	1	200081398	Vault Neck and Plug Cover Assembly 4860x12 30°C LADWP 1-802 G-2B R-1581	3939
7	1	12	100007114	ROD THREADED COIL YELLOW DIP 3/4 X 20"	
8	1	24	100008121	WASHER 3X3X.5 W.875 HOLE GALV	
9	1	32	100007010	HEX COIL NUT 3/4-4.5 POST YELLOW DIP	
10	1	4	100009239	ROD THREADED COIL YELLOW DIP 3/4 X 10-1/2"	
11	1	8	100007136	WASHER FLAT 3/4 REGULAR TYPE A ZINC	
12	1	12	100006069	STRUT SLOTTED C-CHANNEL 1-5/8 X 1-5/8 12GA BOLT-ON GALV 92IN	
13	1	12	100006063	STRUT SLOTTED C-CHANNEL 1-5/8 X 1-5/8 12GA BOLT-ON GALV 22IN	
14	1	120	100004339	BOLT HEX 1/2-13 UNC 2 304SS	
15	1	120	100007135	WASHER FLAT 1/2 TYPE A 304SS	
16	1	12	100006091	STRUT C-CHANNEL CONCRETE INSERT 1-5/8 X 1-5/8 12GA W/ANCHORS N-3200 24IN GALV	
17	1	2	100003033	PULL IRON OFFSET .875DIA 6H X 5W X 10.875L 316SS MB BC153230	
18	1	1	100005940	PULL IRON OFFSET WITH REBAR .875DIA 4.5H 316SS LADWP	
19	1	4	100005716	FITTING PVC SCH 40 CAPPED ENDS 2 X 13	
20	1	1	100007585	LADDER HANGER ASSEMBLY GALV	
21	1	1	100009251	LADDER HOOKED GALV 12FT ED/LA I3382	
22	5,000 gal	5,000 gal	100006420	COATING PAINT LATEX WHITE	
23	1,000 ul	1,000 ul	100005749	SEALANT JOINT BUTYL RUBBER ASTM C-990 AND M198 CS-102 1IN EQUIV X14.5FT PER BOX 118FT	



ISO VIEW

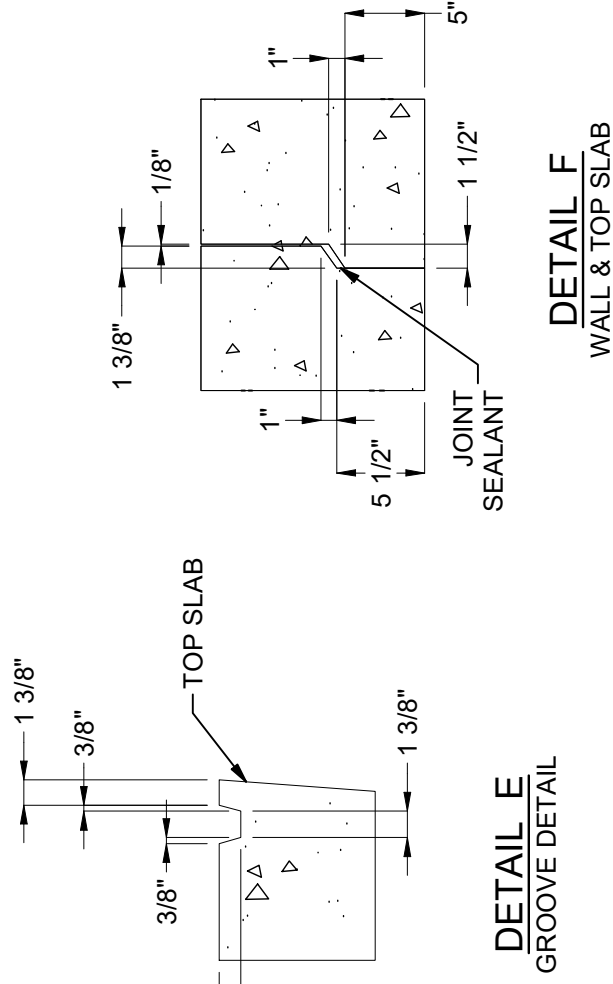
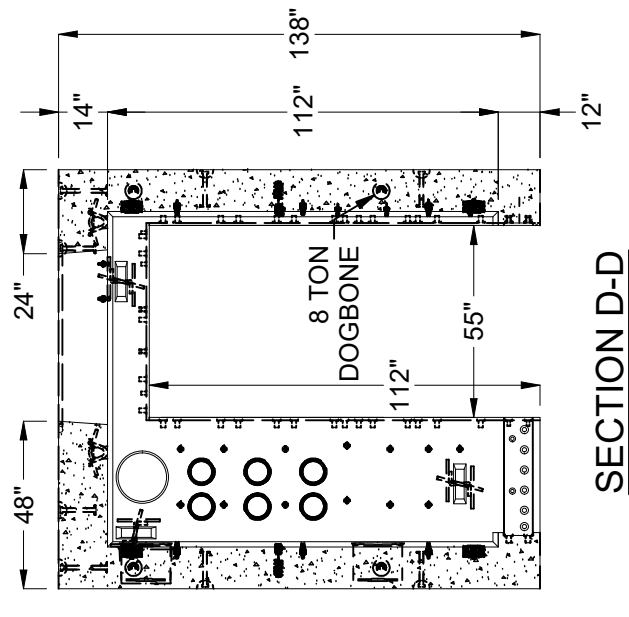
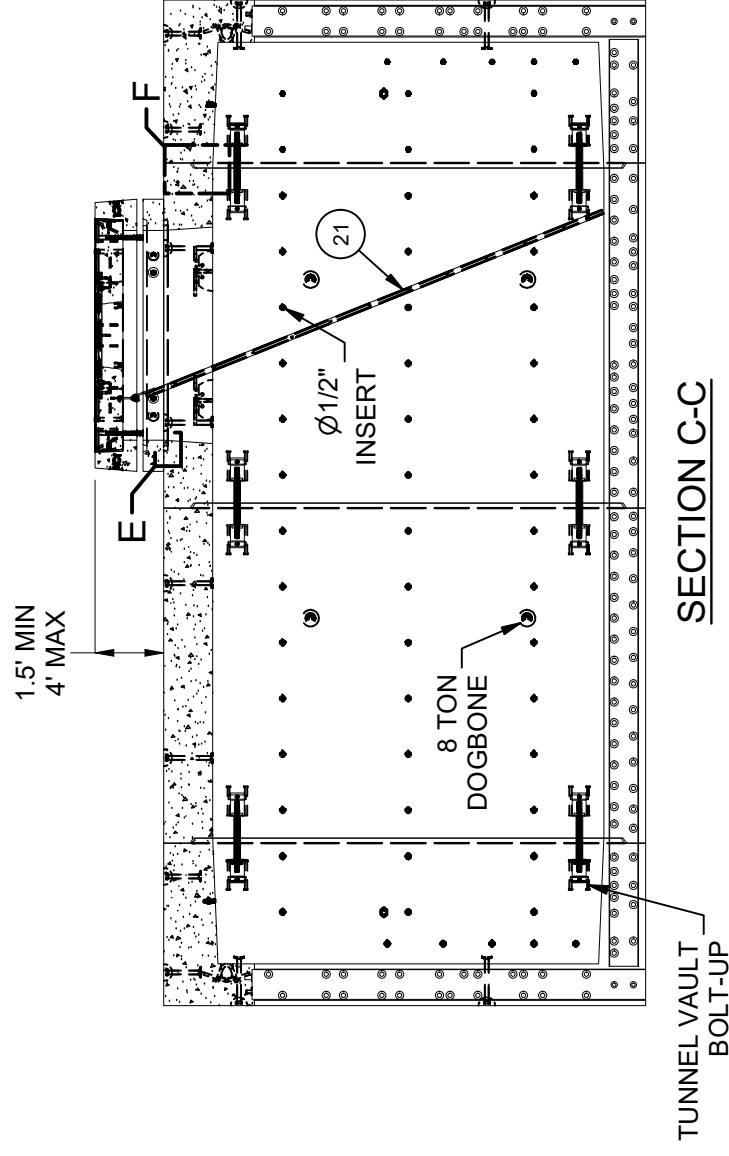
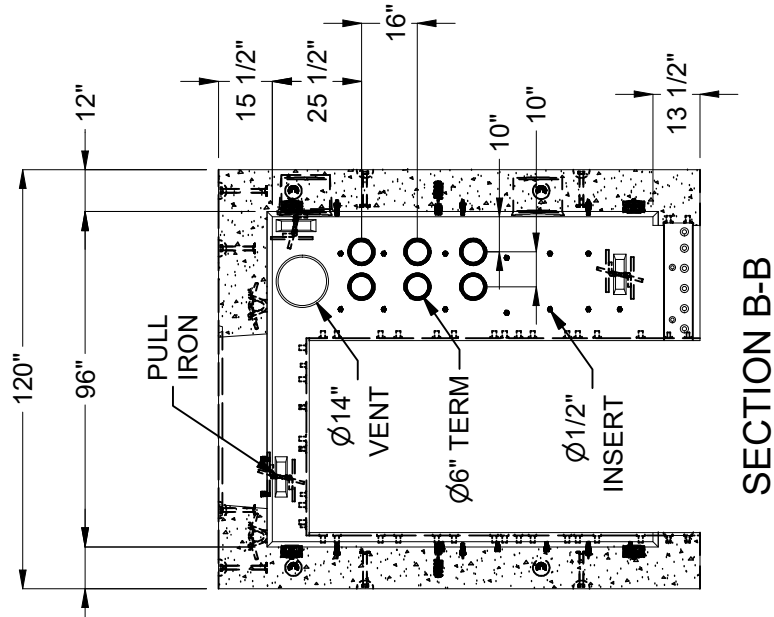
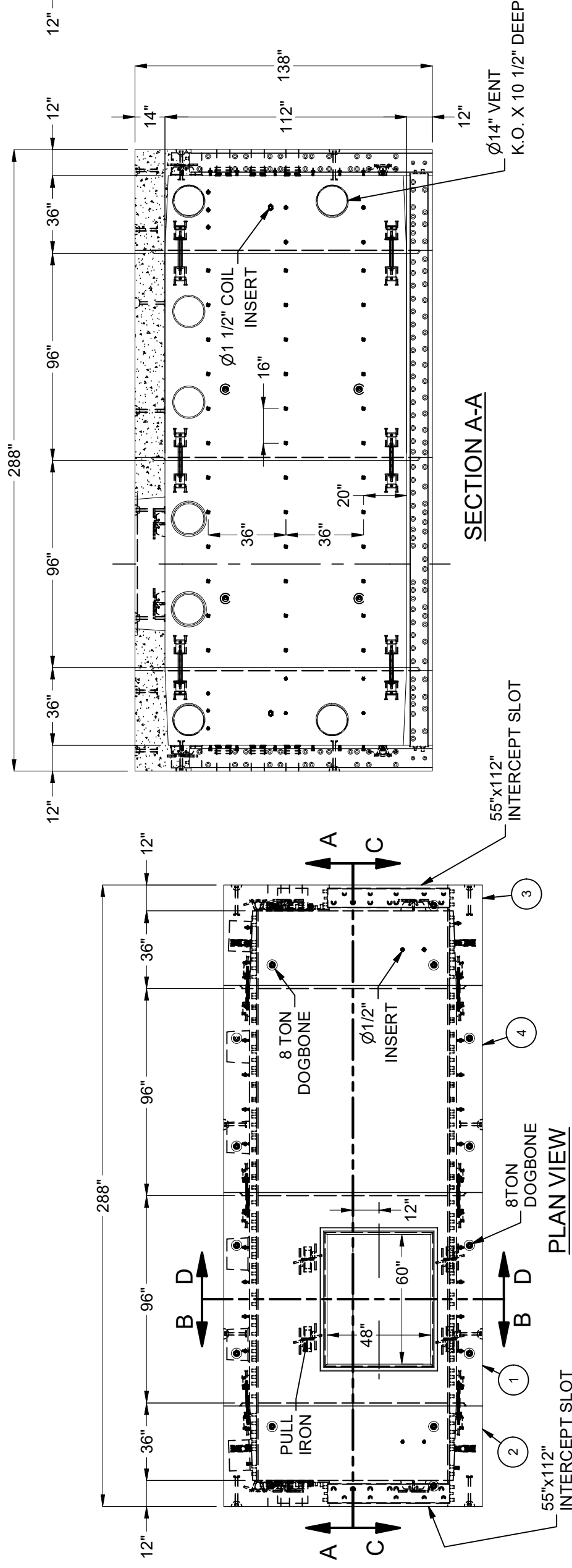
©2023, Jensen Precast. All rights reserved. All materials appearing as Jensen Precast documents and the like are proprietary work product and are protected under U.S. copyright and other laws. Unless in conjunction with business conducted with Jensen Precast, any use of Jensen Precast work product without express, written consent is prohibited, and recipient is prohibited from distributing any and all work product to non-approved third parties under penalty of civil action.

JENSEN PRECAST EST. 1968
WWW.JENSENPRECAST.COM

REVISION HISTORY

REV	DESCRIPTION	DATE	APPROVED
C	ADDED INSERT FOR TUNNEL VAULT BRACKET	12/1/2023	

DESCRIPTION:	Tunnel Vault Intercept Layout TV96112x22' Terminators, Slot 48"x60"E LADWP H-172 G-1A-22' OP1 Int. Paint - White Latex LAYOUT REVIEW
PART NUMBER:	200047922
DRAWN BY:	J. Prado
CREATED:	6/25/2020
MODIFIED:	12/1/2023



BURY DEPTH:	1.5' - 4.0' to Top
WATER LEVEL:	3.0'
DESIGN SPEC:	AASHTO LRFD, ACI 318
AGENCY:	LADWP
APPROX. WEIGHT:	131373.01 Lbs
LOADING SPEC:	AASHTO HL-93
AGENCY SPEC:	H-172 G-1A-22' OP1

JENSEN PRECAST EST. 1968
WWW.JENSENPRECAST.COM

©2023 Jensen Precast. All rights reserved. All materials appearing as Jensen Precast documents and the like are proprietary work product and are protected under U.S. copyright and other laws. Unless in conjunction with business conducted with Jensen Precast, any use of Jensen Precast work product without express, written consent is prohibited, and recipient is prohibited from distributing any and all work product to non-approved third parties under penalty of civil action.

DESCRIPTION:	Tunnel Vault Intercept Layout TV96112x22' Terminators, Slot 48"x60"E LADWP H-172 G-1A-22' OP1 Int. Paint - White Latex LAYOUT DRAWING
PART NUMBER:	200047922
CREATED:	6/25/2020
REV:	C-11
SHEET:	17
DRAWN BY:	J. Prado
MODIFIED:	12/1/2023