

DESIGN NOTES

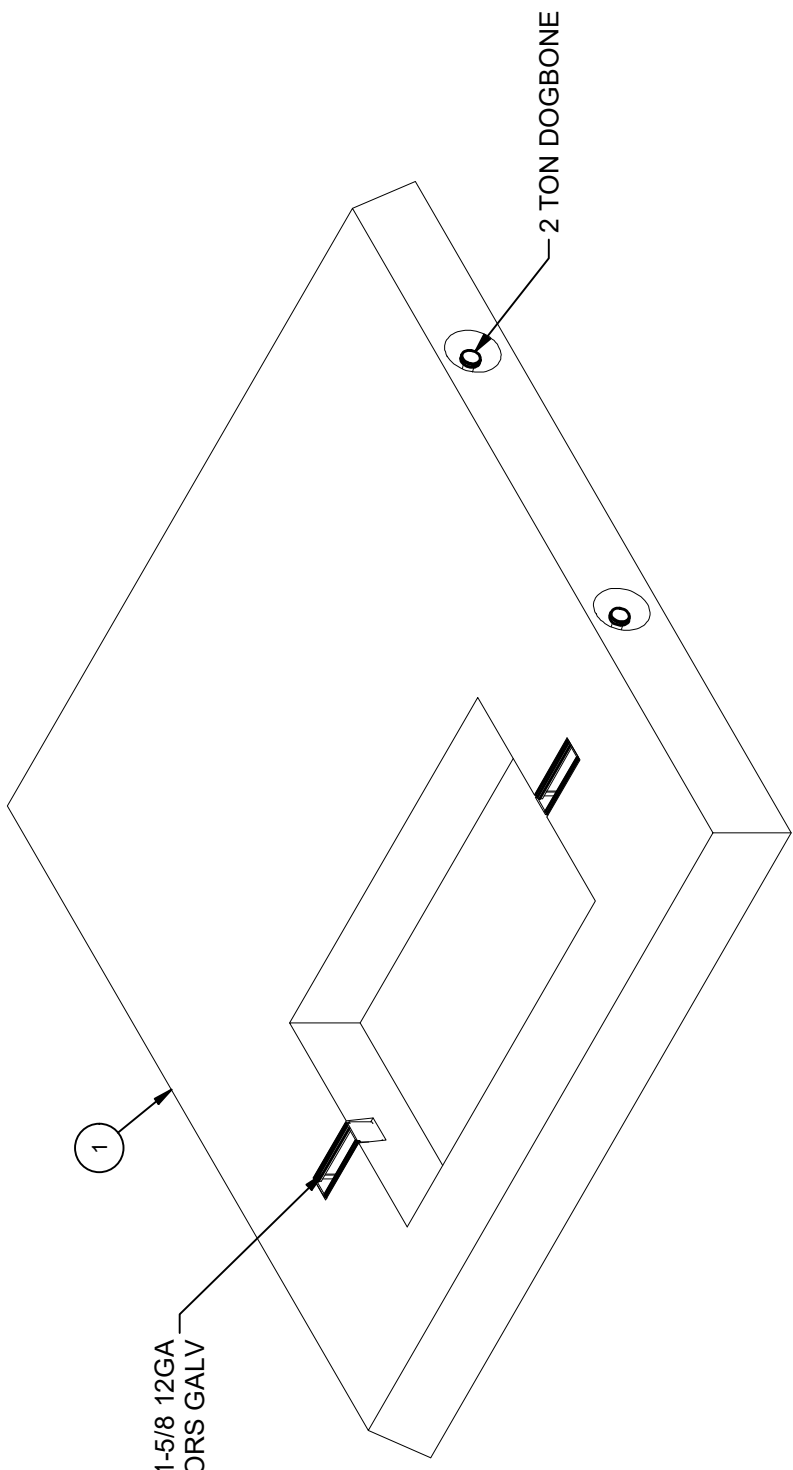
- DESIGNED IN ACCORDANCE WITH AASHTO HS20-44 TRAFFIC BRIDGE LOADING USING 6,000 PSI COMPRESSIVE STRENGTH CONCRETE AND 60,000 PSI YIELD STRENGTH ASTM A-706 STEEL REINFORCEMENT PER CALCS. #34673
- MINIMUM EXCAVATION SIZE: 4'-10" X 5'-0" DEPTH REQ'D.
- FOR COMPLETE DESIGN AND PRODUCT INFORMATION CONTACT JENSEN PRECAST.
- ALL PARTS TO BE STENCILED: MFG DATE / JOB NUMBER / PRODUCT ID / WEIGHT.

CROSS REFERENCE	
JENSEN PART No.	SHORT DESCRIPTION
100012264	3421 Distribution Transformer Pad 48" x 46"
	SDGE STOCK No. S514240

BILL OF MATERIALS

ITEM	UNIT QTY	QTY	PART NUMBER	DESCRIPTION
1	1	1	100012264	Pad 4644x4 SDGE 3421

STRUT C-CHANNEL 1-5/8 X 1-5/8 12GA W/ANCHORS GALV



ISO VIEW

LIFTING NOTES

- FIELD INSTALLATION: PLANT DEMOLDING: MINIMUM HANDLING CONCRETE STRENGTH F'c = 5500 PSI RIGGING EQUALIZER REQUIRED TO EQUALIZE LOAD TO 4 LIFTING POINTS WITH A SLING ANGLE BETWEEN 60° AND 90°

BURY DEPTH:	0.0' - 0.3' to Top
WATER LEVEL:	Below Structure
DESIGN SPEC:	ASTM C857, ACI 318
AGENCY:	SDGE
APPROX. WEIGHT:	616.08 Lbs
LOADING SPEC:	A-03 (300 psf)
AGENCY SPEC:	3421

REVISION HISTORY

REV	DESCRIPTION	DATE	APPROVED
C-1	REVISED OPENING WIDTH	6/20/2023	

DESCRIPTION:

PAD 4644 X 4 SDGE 3421

LAYOUT REVIEW

PART NUMBER: 200055199

DRAWN BY: J. Prado

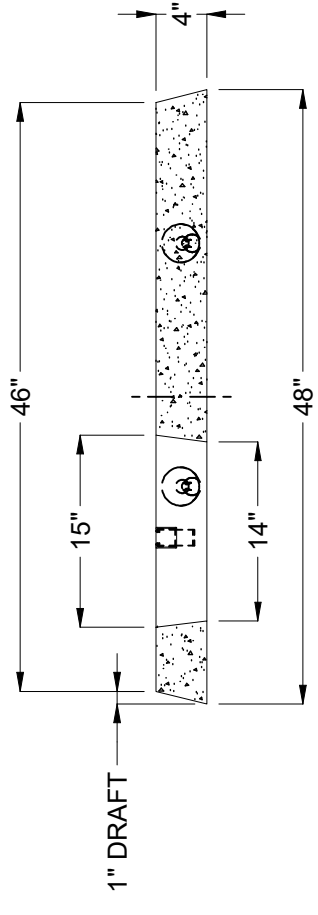
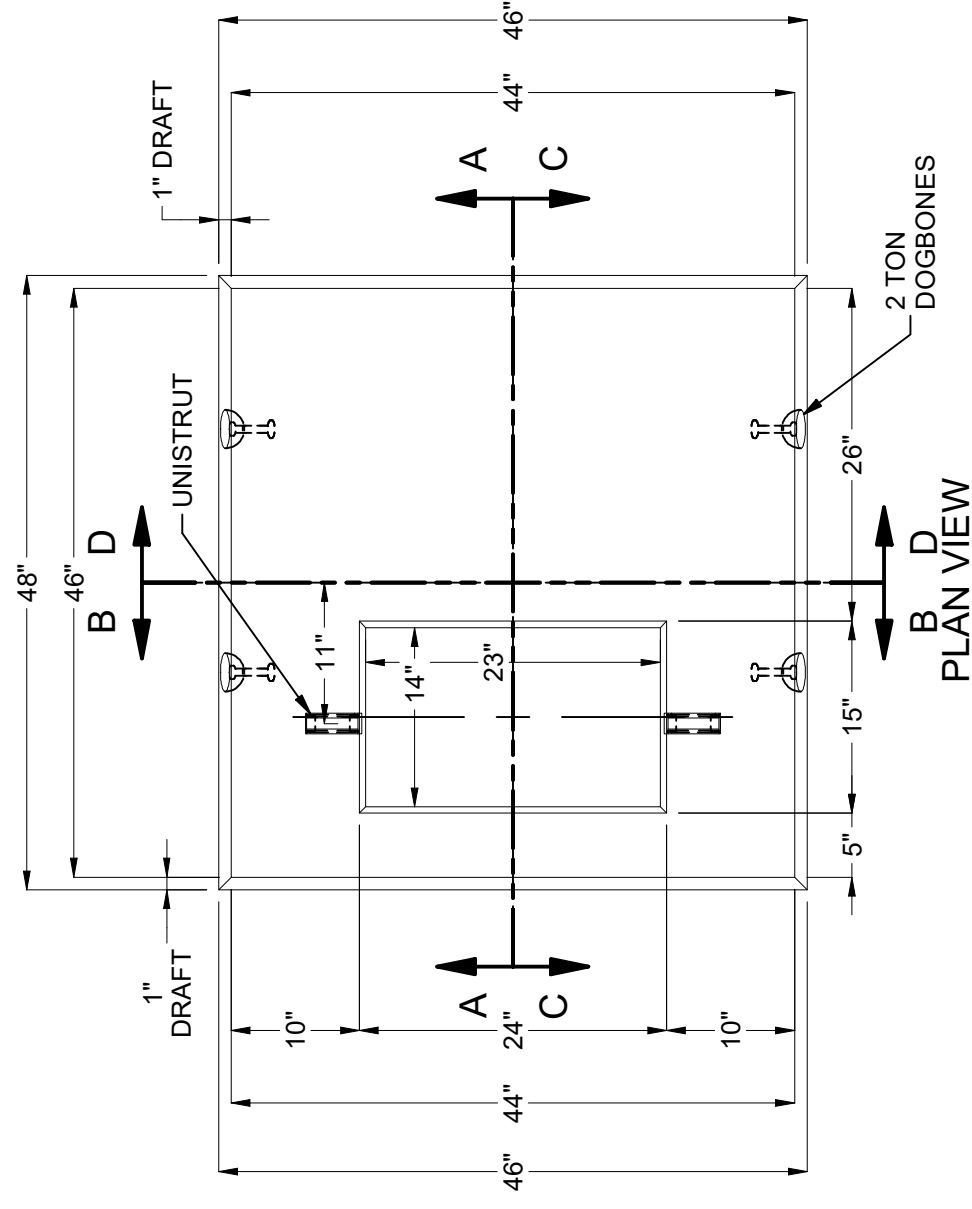
MODIFIED: 6/20/2023

©2023 Jensen Precast-All rights reserved. All materials appearing as Jensen Precast documents and the like are proprietary work product and are protected under U.S. copyright and other laws. Unless in conjunction with business conducted with Jensen Precast, any use of Jensen Precast work product without express, written consent is prohibited, and recipient is prohibited from distributing any and all work product to non-approved third parties under penalty of civil action.

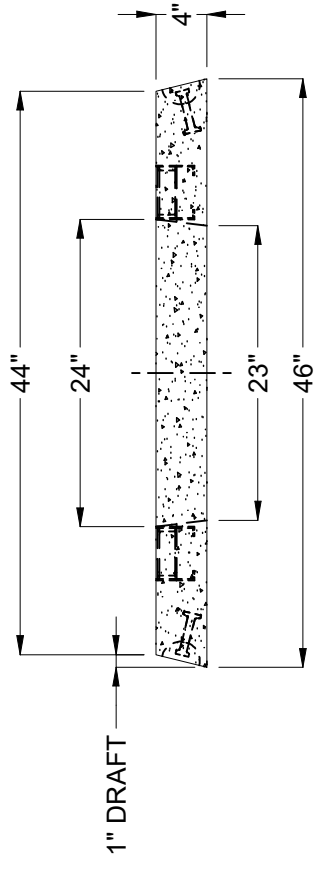
REV: C-1

SHEET: 18

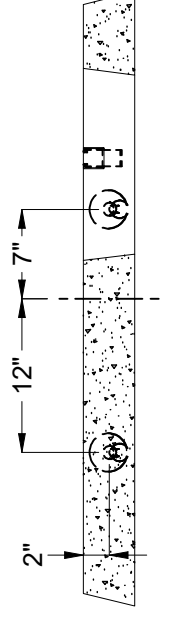
1 OF 2



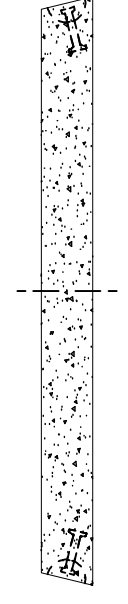
SECTION A-A



SECTION B-B



SECTION C-C



SECTION D-D

BURY DEPTH:	0.0' - 0.3' to Top		
WATER LEVEL:	Below Structure	APPROX. WEIGHT:	616.08 Lbs
DESIGN SPEC:	ASTM C857, ACI 318	LOADING SPEC:	A-03 (300 psf)
AGENCY:	SDGE	AGENCY SPEC:	3421

JENSEN PRECAST EST. 1968
 WWW.JENSENPRECAST.COM

©2023 Jensen Precast. All rights reserved. All materials appearing as Jensen Precast documents and the like are proprietary work product and are protected under U.S. copyright and other laws. Unless in conjunction with business conducted with Jensen Precast, any use of Jensen Precast work product without express, written consent is prohibited, and recipient is prohibited from distributing any and all work product to non-approved third parties under penalty of civil action.

DESCRIPTION:	PAD 4644 X 4 SDGE 3421 LAYOUT DRAWING		
PART NUMBER:	200055199	DRAWN BY:	J. Prado
CREATED:	8/2/2021	MODIFIED:	6/20/2023