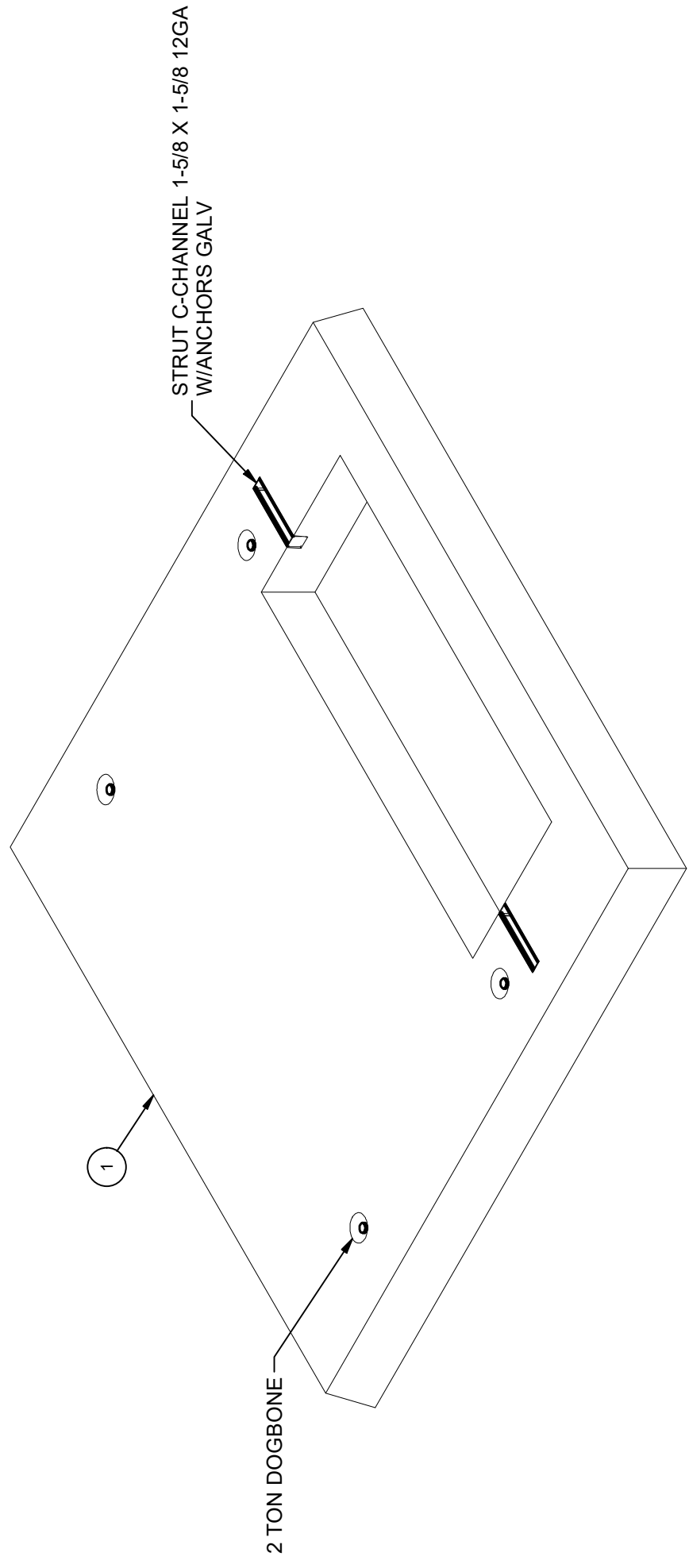


BILL OF MATERIALS			
ITEM	UNIT QTY	QTY	DESCRIPTION
1	1	1	Pad PD7376x6 SDGE 3426
		100012222	

DESIGN NOTES

- DESIGNED IN ACCORDANCE WITH AASHTO HS20-44 TRAFFIC BRIDGE LOADING USING 6,000 PSI COMPRESSIVE STRENGTH CONCRETE AND 60,000 PSI YIELD STRENGTH ASTM A-706 STEEL REINFORCEMENT PER CALCS. #31721.
- MINIMUM EXCAVATION SIZE: 7'-3" X 7'-6" DEPTH REQ'D.
- ALL PARTS TO BE STENCILED: MFG DATE / JOB NUMBER / PRODUCT ID / WEIGHT.
- FOR COMPLETE DESIGN AND PRODUCT INFORMATION CONTACT JENSEN PRECAST.

CROSS REFERENCE	
JENSEN PART No.	SDGE STOCK No.
100012222	3426 Distribution Transformer Pad 75" x 78" S514005



ISO VIEW

LIFTING NOTES	
FIELD INSTALLATION: PLANT DEMOLDING: MINIMUM HANDLING CONCRETE STRENGTH F _c = 5500 PSI RIGGING EQUALIZER REQUIRED TO EQUALIZE LOAD TO 4 LIFTING POINTS WITH A SLING ANGLE BETWEEN 60° AND 90°	
BURY DEPTH:	0.0' - 3.0' to Top
WATER LEVEL:	Below Structure
DESIGN SPEC:	ASTM C857, ACI 318
AGENCY:	SDGE
APPROX. WEIGHT:	2484.24 Lbs
LOADING SPEC:	A-03 (300 psf)
AGENCY SPEC:	3426

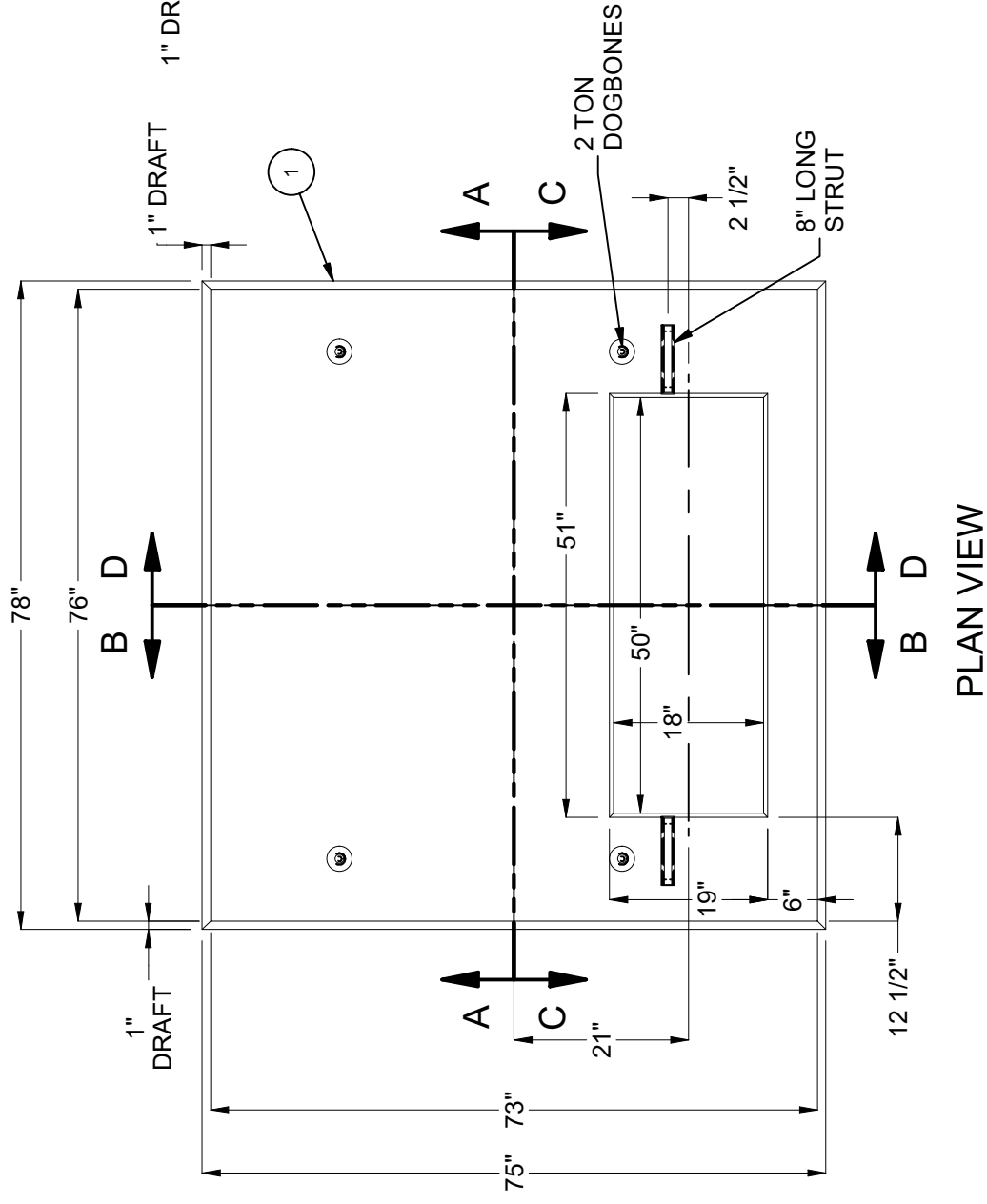


©2023 Jensen Precast. All rights reserved. All materials appearing as Jensen Precast documents and the like are proprietary work product and are protected under U.S. copyright and other laws. Unless in conjunction with business conducted with Jensen Precast, any use of Jensen Precast work product without express, written consent is prohibited, and recipient is prohibited from distributing any and all work product to non-approved third parties under penalty of civil action.

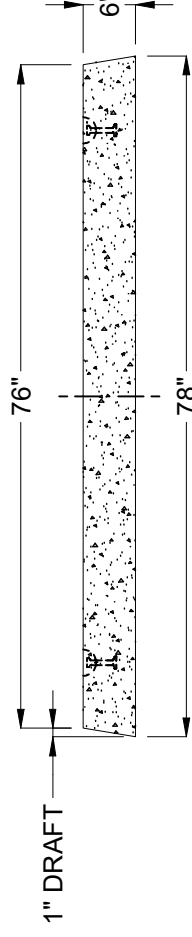
REVISION HISTORY		
REV	DESCRIPTION	DATE
C	REVISED DOGBONES, C-CHANNELS & REMOVED IDENCIA TAG	6/6/2023

DESCRIPTION:	PAD 7376 X 6 SDGE 3426
PART NUMBER:	200055221
CREATED:	8/2/2021
REV:	C-1
SHEET:	1 OF 2
DRAWN BY:	J. Prado
MODIFIED:	6/6/2023

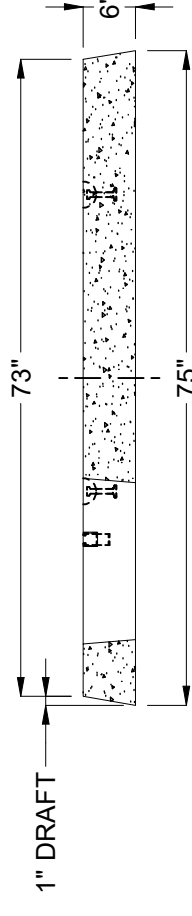
LAYOUT REVIEW



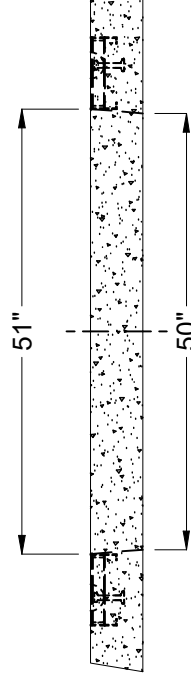
PLAN VIEW



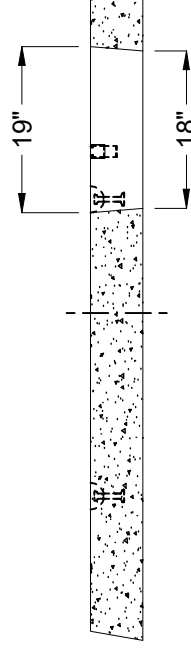
SECTION A-A



SECTION B-B



SECTION C-C



SECTION D-D

BURY DEPTH:	0.0' - 3.0' to Top		
WATER LEVEL:	Below Structure	APPROX. WEIGHT:	2484.24 Lbs
DESIGN SPEC:	ASTM C857, ACI 318	LOADING SPEC:	A-03 (300 psf)
AGENCY:	SDGE	AGENCY SPEC:	3426

JENSEN PRECAST EST. 1968
 WWW.JENSENPRECAST.COM

©2023 Jensen Precast. All rights reserved. All materials appearing as Jensen Precast documents and the like are proprietary work product and are protected under U.S. copyright and other laws. Unless in conjunction with business conducted with Jensen Precast, any use of Jensen Precast work product without express, written consent is prohibited, and recipient is prohibited from distributing any and all work product to non-approved third parties under penalty of civil action.

DESCRIPTION:	PAD 7376 X 6 SDGE 3426 LAYOUT DRAWING		
PART NUMBER:	200055221	DRAWN BY:	J. Prado
CREATED:	8/2/2021	MODIFIED:	6/6/2023
REV:	C-1	SHEET:	42
			2 OF 2