

DESIGN NOTES

■ STRUCTURES TO BE STENCILED, "JENSEN PRECAST", WITH "TIME" AND "DATE OF POUR", AND SDGE STOCK NUMBER ON EXTERIOR AND INTERIOR WALLS.

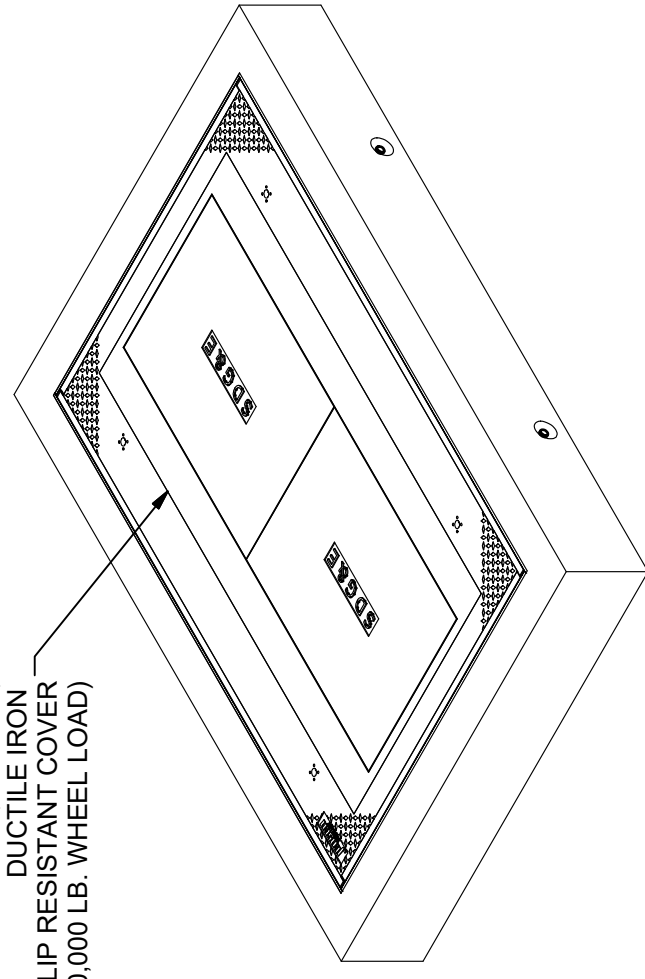
COVER NOTES

- 1/2" STAINLESS STEEL PENTAHEAD BOLTS AND WASHER (4 PER COVER, 8 TOTAL)
- 200,000 LB. WHEEL LOAD DUCTILE IRON COVERS.
- LIFT ASSIST STAINLESS STEEL MECHANICAL STRUTS (ONE EA. COVER). LIFT FORCE REQUIRED PER COVER 35 LBS MAX.
- SAFETY BAR LOCKS WHILE OPENED (1 PER COVER, 2 TOTAL).

CROSS REFERENCE

JENSEN PART No.	SHORT DESCRIPTION	SDGE STOCK No.
100009300	3315 Traffic Neck	S287738
200055559	3315 EXTRA HEAVY DUTY 200,000 LB. WHEEL LOAD COVER	

EJ 2472 HINGED, BOLTED, DUCTILE IRON SLIP RESISTANT COVER (200,000 LB. WHEEL LOAD)



ISOMETRIC VIEW

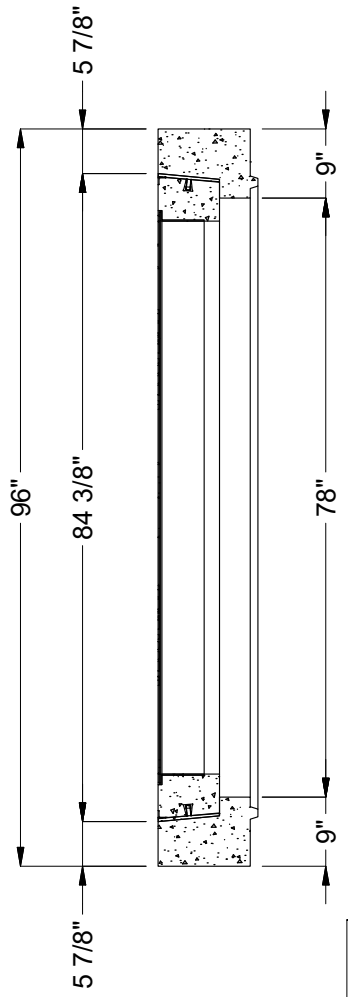
LIFTING NOTES

■ INSTALLATION: THIS CONCRETE PRODUCT IS DESIGNED TO BE LIFTED AT 5500 PSI WITH 4 LIFT CONNECTIONS EQUALLY LOADED TO 4 LIFTING POINTS AT A MINIMUM 60° SLING ANGLE, MEASURED FROM HORIZONTAL.

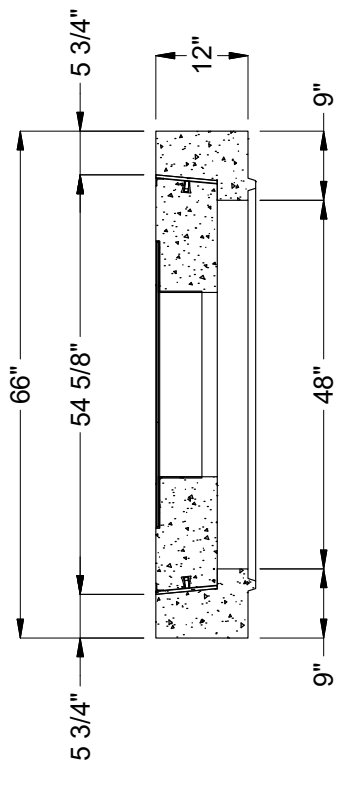
BURY DEPTH:	0.0' - 0.0' to Top
WATER LEVEL:	3.0'
DESIGN SPEC:	ASTM C857, ACI 318
AGENCY:	SDGE
WEIGHT:	5266.82 Lbs
LOADING SPEC:	A-16 (AASHTO HS20-44)
AGENCY SPEC:	3315

BILL OF MATERIALS

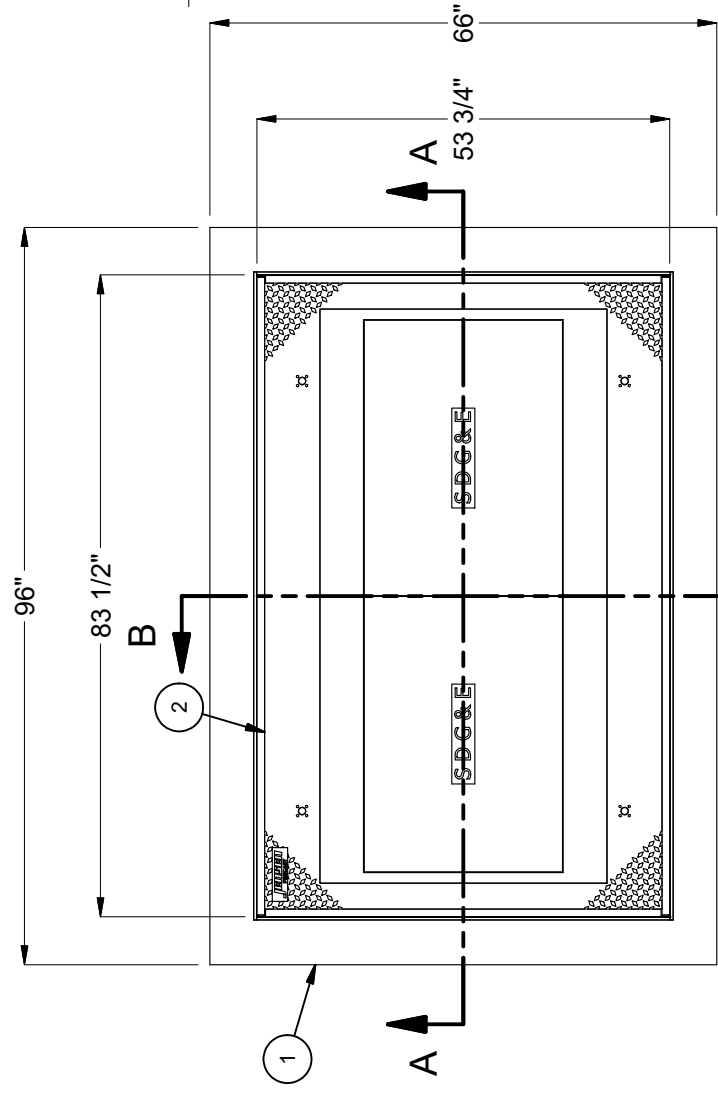
ITEM	UNIT QTY	QTY	PART NUMBER	DESCRIPTION	MASS (lb)
1	1	1	100009300	Riser 4878x12 Rect. Riser SDGE 3315	2230
2	1	1	200055559	Plug Cover 4878 x 8 Slab Top 24"x72"C SDGE 3315	3037



SECTION A-A



SECTION B-B



PLAN VIEW

REVISION HISTORY

REV	DESCRIPTION	DATE	APPROVED
A	INITIAL RELEASE	9/9/2021	

DESCRIPTION:

Utility Vault 4878 Assembly SDGE 3315

LAYOUT REVIEW

DRAWN BY: S. Rodarte

MODIFIED: 9/9/2021

REV: A

22

SHEET:

1 OF 1

CREATED: 2/13/2020



EST. 1968

WWW.JENSENPRECAST.COM

©2018 Jensen Precast. All rights reserved. All materials appearing as Jensen Precast documents and the like are proprietary work product and are protected under U.S. copyright and other laws. Unless in conjunction with business conducted with Jensen Precast, any use of Jensen Precast work product without express, written consent is prohibited, and recipient is prohibited from distributing any and all work product to non-approved third parties under penalty of civil action.