

DESIGN NOTES

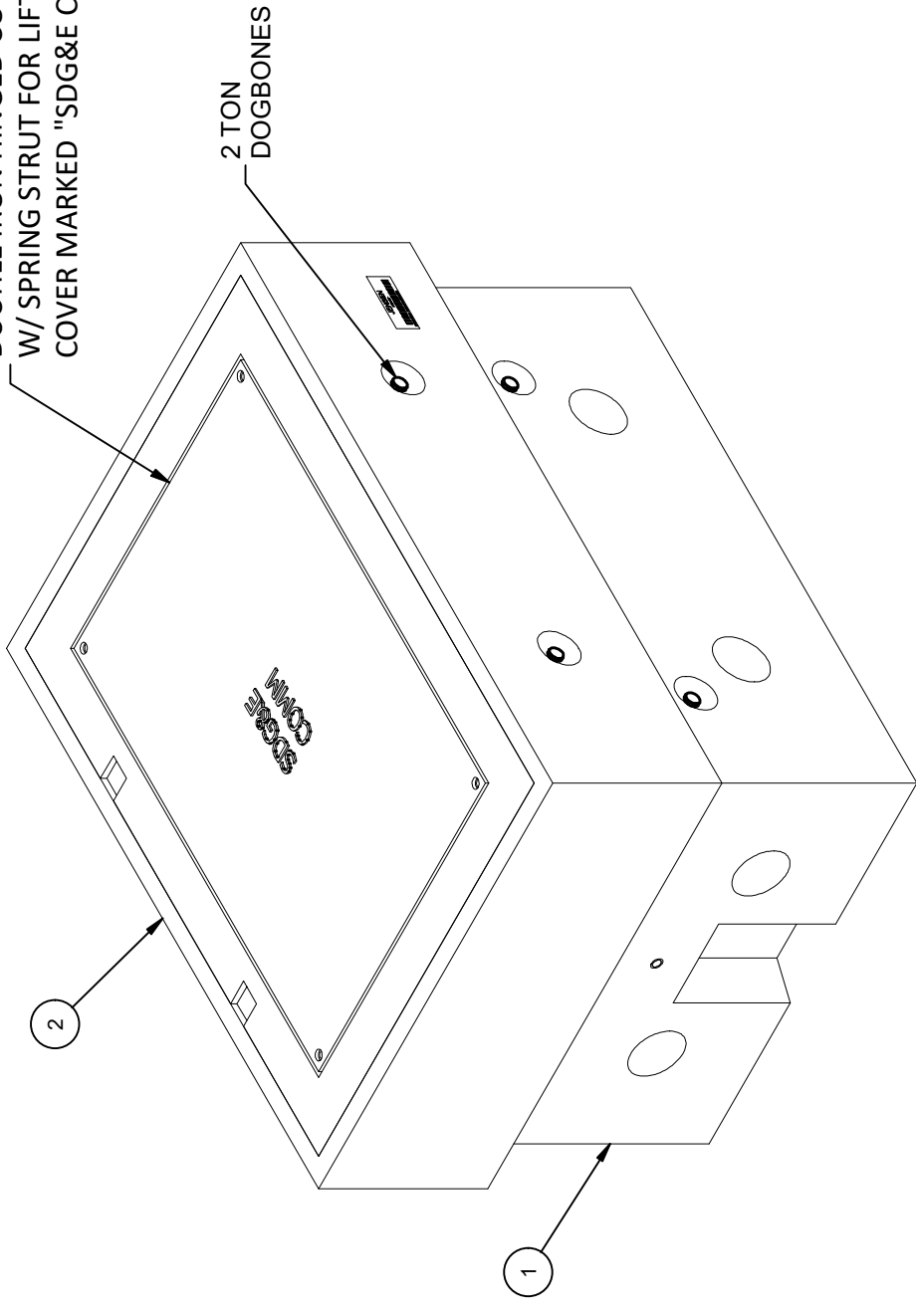
- DESIGNED IN ACCORDANCE WITH AASHTO HS-20-44 BRIDGE LOADING USING 6,000 PSI COMPRESSIVE STRENGTH CONCRETE AND 60,000 PSI YIELD STRENGTH ASTM A-706 STEEL REINFORCEMENT PER CALCS. #34712.
- MINIMUM EXCAVATION SIZE: 5'-0" X 4'-0" DEPTH REQ'D.
- FOR COMPLETE DESIGN AND PRODUCT INFORMATION CONTACT JENSEN PRECAST.
- COVER DESIGN FOR TRAFFIC LOADING.
- VAULT TO BE PLACED ON A MIN. 6" BASE OF CRUSHER RUN FOR EASE OF INSTALLATION AND EVEN LOAD DISTRIBUTION.
- ALL PARTS TO BE STENCILED: MFG DATE / JOB NUMBER / PRODUCT ID / WEIGHT.

CROSS REFERENCE	
JENSEN PART No.	SHORT DESCRIPTION
200056407	3313 BASE SECTION 18"
200056416	3313-L TOP SECTION 12"

BILL OF MATERIALS

ITEM	UNIT QTY	QTY	PART NUMBER	DESCRIPTION	MASS (lb)
1	1	1	200056407	Riser 2436x18 Rect. Riser Terminators SDGE 3313	788
2	1	1	200056416	Riser 2436x12 Rect. Riser Cast-In Cover SDGE 3313-L	1323
3	1,000 ul	1,000 ul	100005749	SEALANT JOINT BUTYL RUBBER ASTM C-990 AND M198 CS-102 1IN EQUIV X14.5FT PER BOX 118FT	

24" x 36" HEAVY DUTY
DUCTILE IRON HINGED COVER
W/ SPRING STRUT FOR LIFT ASSIST.
COVER MARKED "SDG&E COMM"



ISO VIEW

LIFTING NOTES

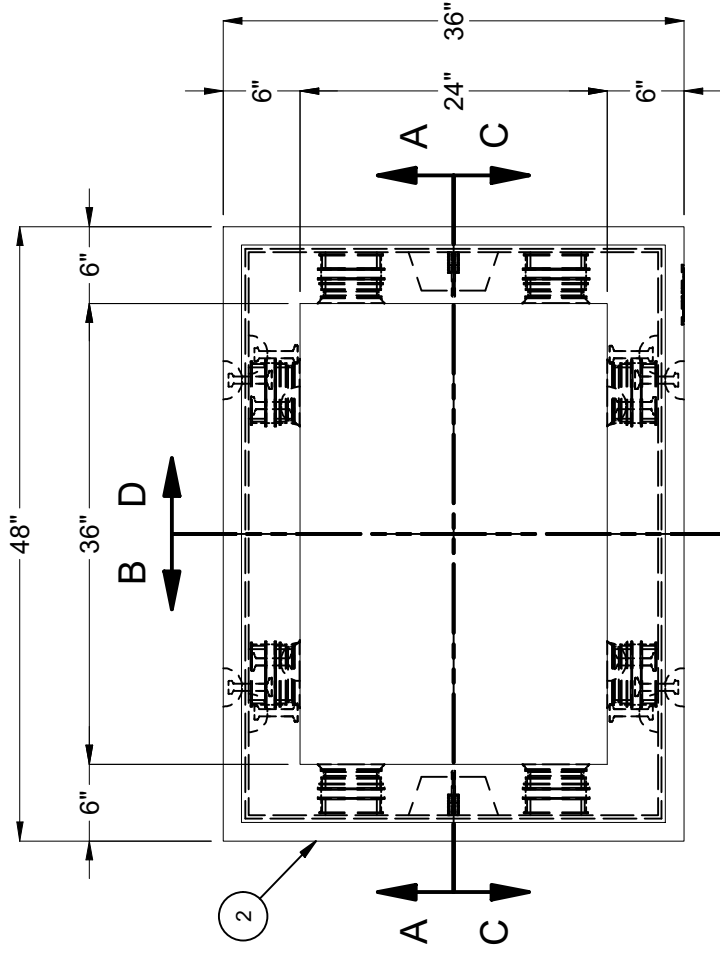
- FIELD INSTALLATION: PLANT DEMOLDING: MINIMUM HANDLING CONCRETE STRENGTH F'c = 5500 PSI RIGGING EQUALIZER REQUIRED TO EQUALIZE LOAD TO 4 LIFTING POINTS WITH A SLING ANGLE BETWEEN 60° AND 90°
- BURY DEPTH: 0.0' - 0.0' to Top
- WATER LEVEL: 3.0' APPROX. WEIGHT: 2111.67 Lbs
- DESIGN SPEC: ASTM C857, ACI 318 LOADING SPEC: A-16 (AASHTO HS20-44)
- AGENCY: SDGE AGENCY SPEC: 3313-L & COMM

REVISION HISTORY	
REV	DESCRIPTION
B-1	UPDATE BOTTOM SECTION
	DATE 5/10/2023
	APPROVED

DESCRIPTION:	Pull Box 2436 Layout Assembly SDGE 3313-L & COMM
REV:	B-2
PART NUMBER:	200056418
CREATED:	9/15/2021
DRAWN BY:	D. Mejia
MODIFIED:	5/10/2023
LAYOUT REVIEW	
SHEET:	1 OF 2

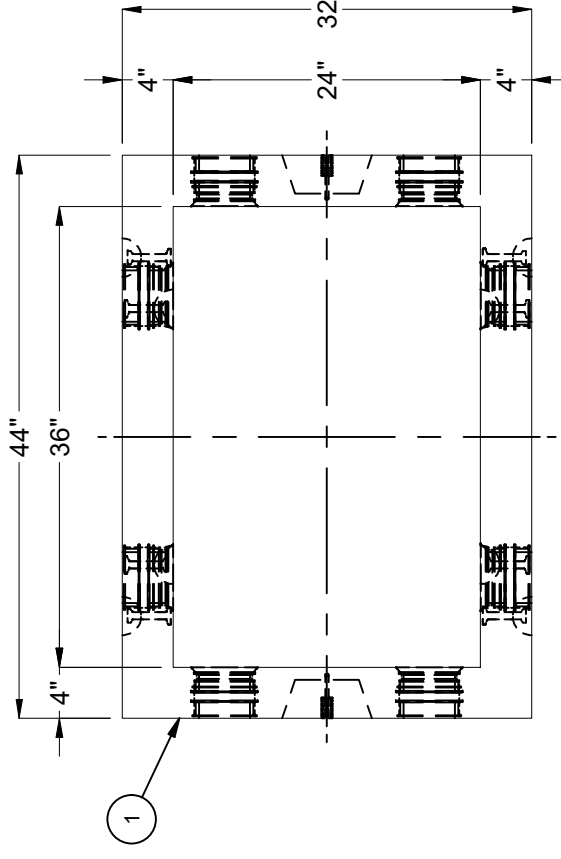
JENSEN PRECAST EST. 1968
WWW.JENSENPRECAST.COM

©2023 Jensen Precast. All rights reserved. All materials appearing as Jensen Precast documents and the like are proprietary work product and are protected under U.S. copyright and other laws. Unless in conjunction with business conducted with Jensen Precast, any use of Jensen Precast work product without express, written consent is prohibited, and recipient is prohibited from distributing any and all work product to non-approved third parties under penalty of civil action.

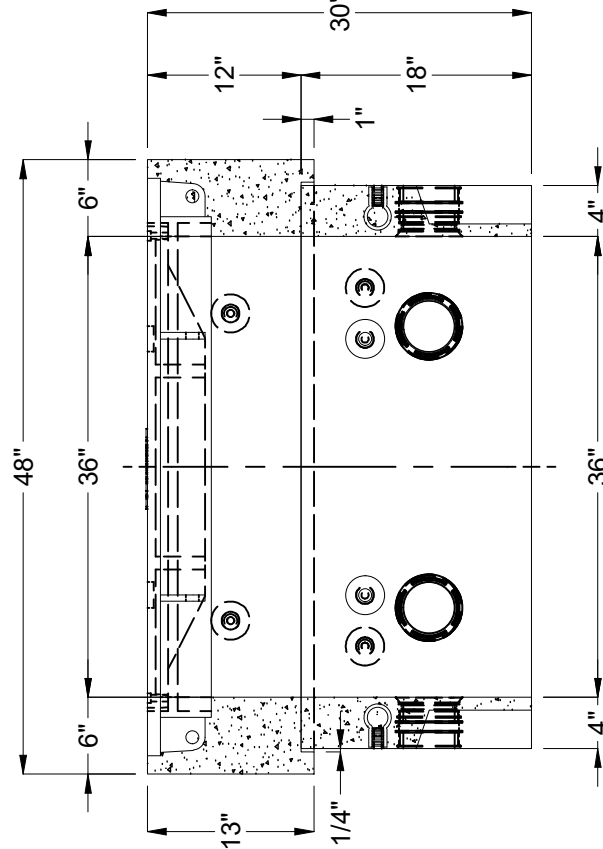


PLAN VIEW
(COVER NOT SHOWN FOR CLARITY)

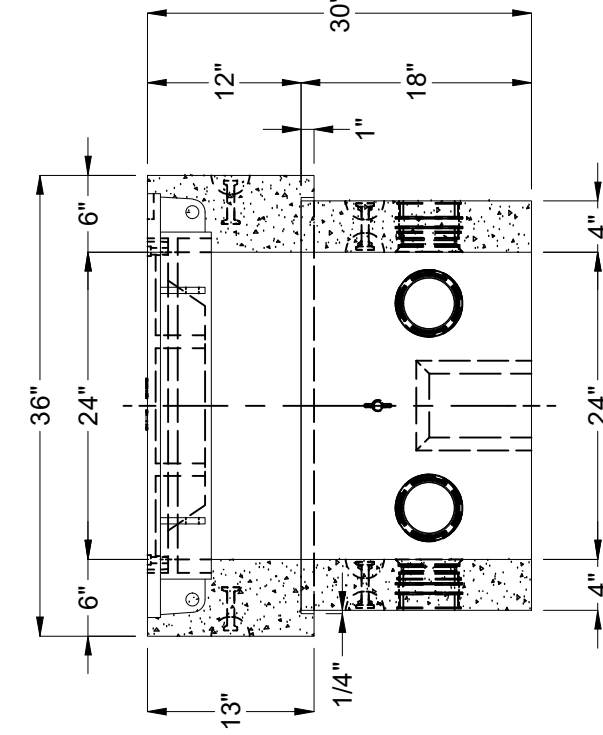
(COVER NOT SHOWN FOR CLARITY)



PLAN VIEW
(BOTTOM SECTION)

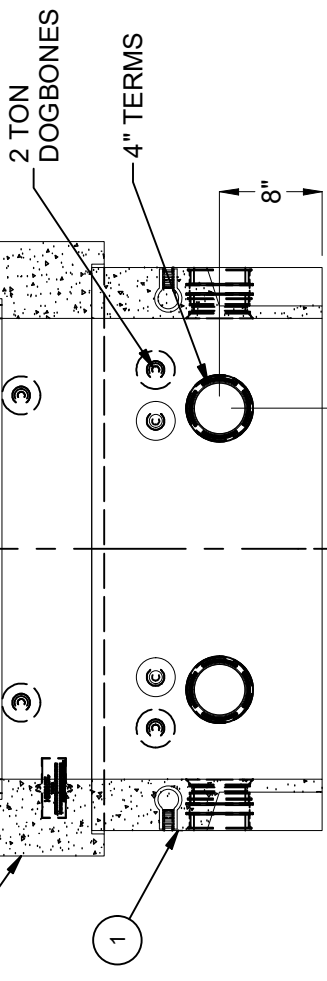


SECTION A-A

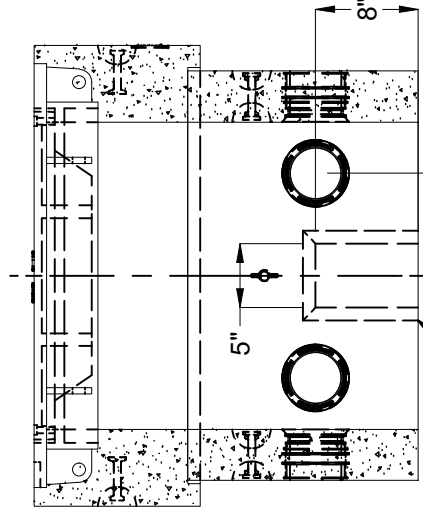


SECTION B-B

24" x 36" HEAVY DUTY
DUCTILE IRON HINGED COVER
W/ SPRING STRUT FOR LIFT ASSIST



SECTION C-C



SECTION D-D

5" x 8" x 3" DEEP K.O.
(DRAFT: T=1", B=0, S1=S2=1")

BURY DEPTH:	0.0' - 0.0' to Top
WATER LEVEL:	3.0'
DESIGN SPEC:	ASTM C857, ACI 318
AGENCY:	SDGE
APPROX. WEIGHT:	2111.67 Lbs
LOADING SPEC:	A-16 (AASHTO HS20-44)
AGENCY SPEC:	3313-L & COMM

JENSEN PRECAST EST. 1968
WWW.JENSENPRECAST.COM

©2023 Jensen Precast. All rights reserved. All materials appearing as Jensen Precast documents and the like are proprietary work product and are protected under U.S. copyright and other laws. Unless in conjunction with business conducted with Jensen Precast, any use of Jensen Precast work product without express, written consent is prohibited, and recipient is prohibited from distributing any and all work product to non-approved third parties under penalty of civil action.

DESCRIPTION:	Pull Box 2436 Layout Assembly SDGE 3313-L & COMM
PART NUMBER:	200056418
CREATED:	9/15/2021
LAYOUT DRAWING	
DRAWN BY:	D. Mejia
MODIFIED:	5/10/2023

REV:	B-2
SHEET:	2 OF 2