

DESIGN NOTES

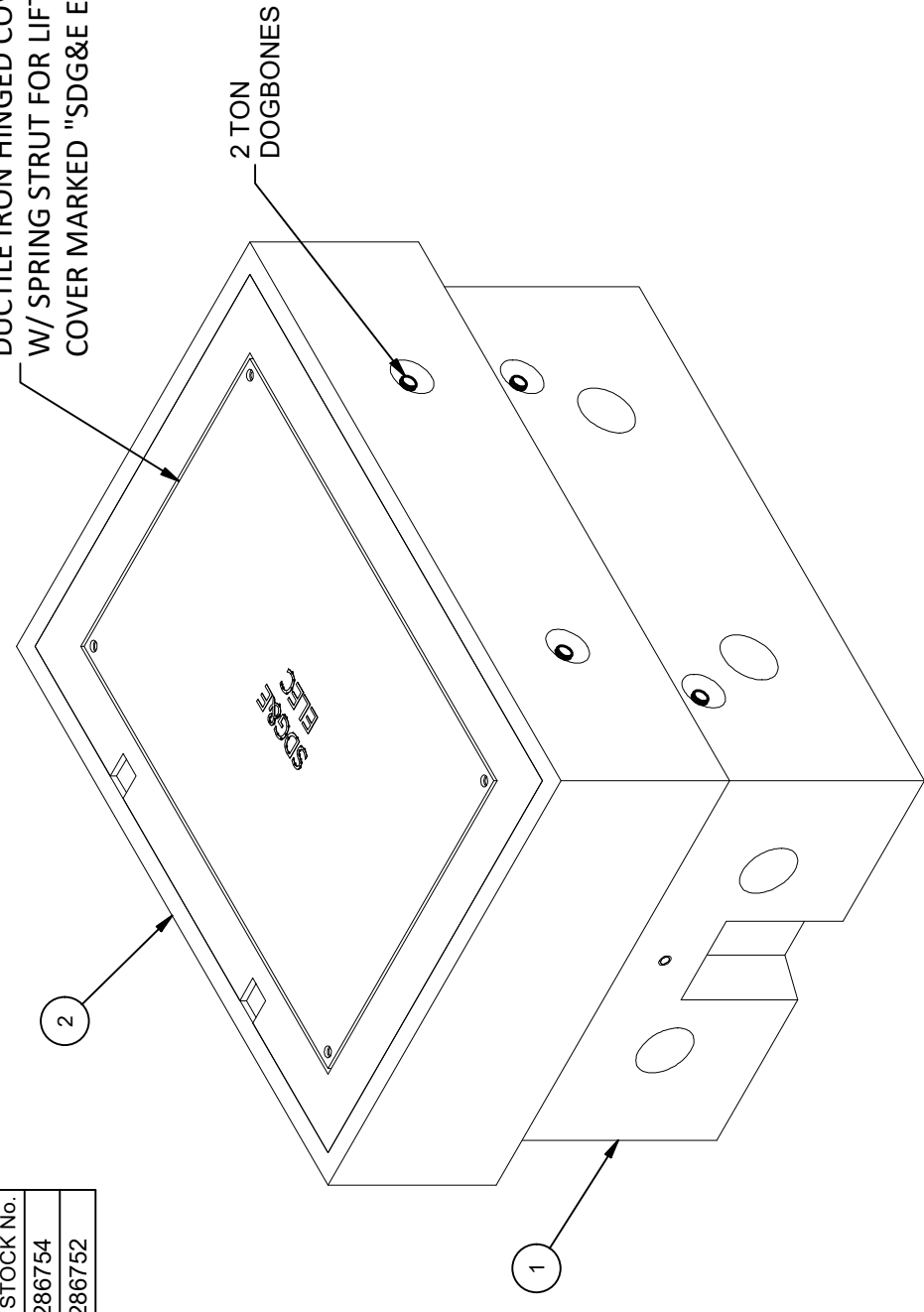
- DESIGNED IN ACCORDANCE WITH AASHTO HS-20-44 BRIDGE LOADING USING 6,000 PSI COMPRESSIVE STRENGTH CONCRETE AND 60,000 PSI YIELD STRENGTH ASTM A-706 STEEL REINFORCEMENT PER CALCS. #34712.
- MINIMUM EXCAVATION SIZE: 5'-0" X 4'-0" DEPTH REQ'D.
- FOR COMPLETE DESIGN AND PRODUCT INFORMATION CONTACT JENSEN PRECAST.
- COVER DESIGN FOR TRAFFIC LOADING.
- VAULT TO BE PLACED ON A MIN. 6" BASE OF CRUSHER RUN FOR EASE OF INSTALLATION AND EVEN LOAD DISTRIBUTION.
- ALL PARTS TO BE STENCILED: MFG DATE / JOB NUMBER / PRODUCT ID / WEIGHT.

CROSS REFERENCE	
JENSEN PART No.	SDGE STOCK No.
200056407	S286754
200056898	S286752

BILL OF MATERIALS

ITEM	UNIT QTY	QTY	PART NUMBER	DESCRIPTION	MASS (lb)
1	1	1	200056407	Riser 2436x18 Rect. Riser Terminators SDGE 3313	788
2	1	1	200056898	Riser 2436x12 Rect. Riser Cast-In Cover SDGE 3313-T	1323
3	1,000 ul	1,000 ul	100005749	SEALANT JOINT BUTYL RUBBER ASTM C-990 AND M198 CS-102 1IN EQUIV X14.5FT PER BOX 118FT	

24" x 36" HEAVY DUTY
DUCTILE IRON HINGED COVER
W/ SPRING STRUT FOR LIFT ASSIST.
COVER MARKED "SDG&E ELEC"



ISO VIEW

LIFTING NOTES

FIELD INSTALLATION: PLANT DEMOLDING: MINIMUM HANDLING CONCRETE STRENGTH F _c = 5500 PSI RIGGING EQUALIZER REQUIRED TO EQUALIZE LOAD TO 4 LIFTING POINTS WITH A SLING ANGLE BETWEEN 60° AND 90°	
BURY DEPTH:	0.0' - 0.0' to Top
WATER LEVEL:	3.0'
DESIGN SPEC:	ASTM C857, ACI 318
AGENCY:	SDGE
APPROX. WEIGHT:	2111.67 Lbs
LOADING SPEC:	A-16 (AASHTO HS20-44)
AGENCY SPEC:	3313-T & ELEC



EST. 1968

WWW.JENSENPRECAST.COM

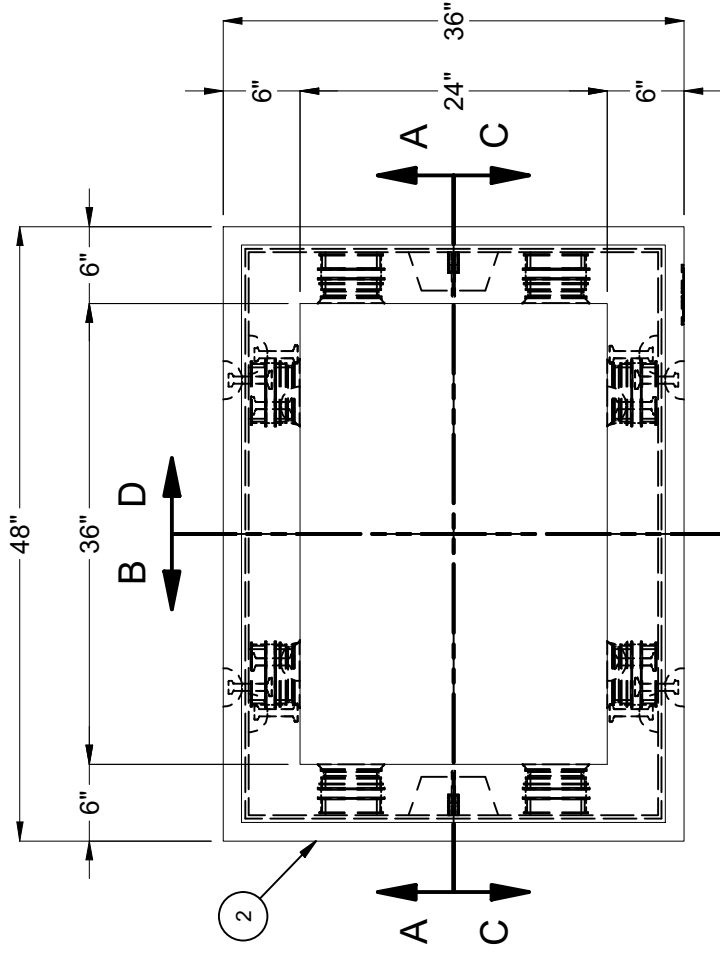
©2023 Jensen Precast. All rights reserved. All materials appearing as Jensen Precast documents and the like are proprietary work product and are protected under U.S. copyright and other laws. Unless in conjunction with business conducted with Jensen Precast, any use of Jensen Precast work product without express, written consent is prohibited, and recipient is prohibited from distributing any and all work product to non-approved third parties under penalty of civil action.

REVISION HISTORY

REV	DESCRIPTION	DATE	APPROVED
B	UPDATE BOTTOM SECTION	5/10/2023	

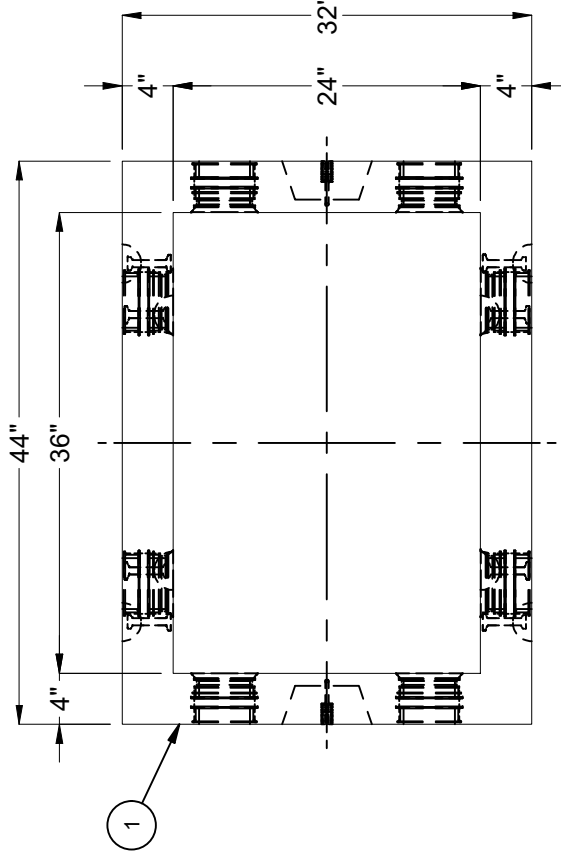
DESCRIPTION:	Pull Box 2436 Layout Assembly SDGE 3313-T & ELEC
PART NUMBER:	200056899
CREATED:	9/15/2021
REV:	B-1
SHEET:	1 OF 2
DRAWN BY:	D. Mejia
MODIFIED:	5/10/2023

MPI:668950002

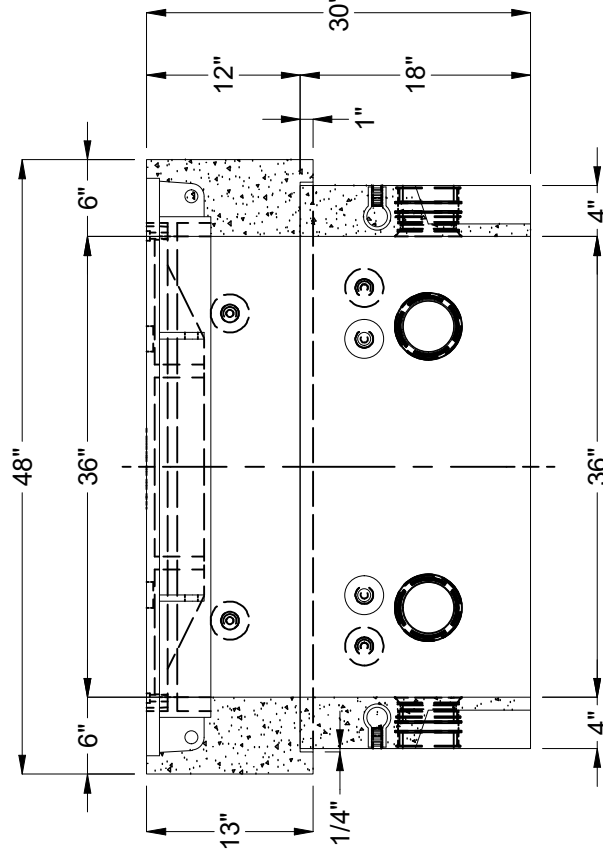


PLAN VIEW
(COVER NOT SHOWN FOR CLARITY)

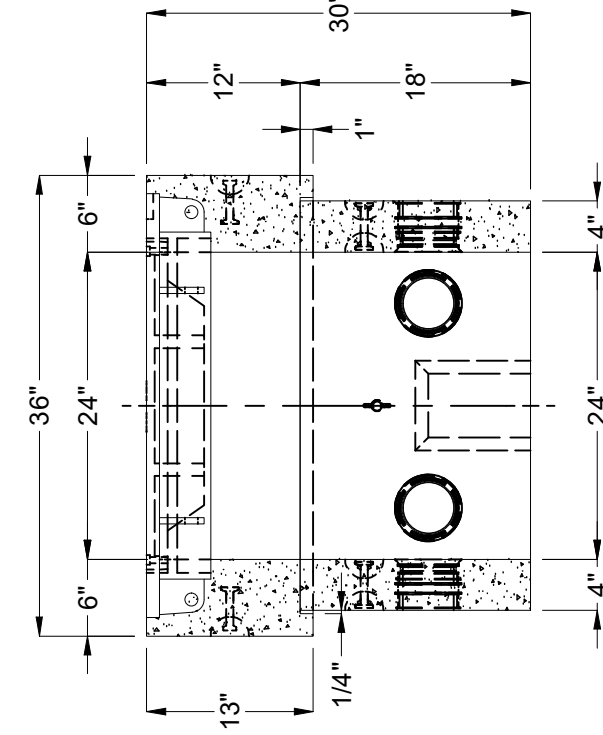
(COVER NOT SHOWN FOR CLARITY)



PLAN VIEW
(BOTTOM SECTION)



SECTION A-A

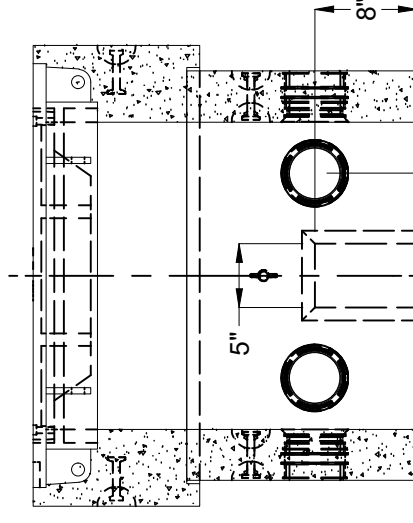


SECTION B-B

24" x 36" HEAVY DUTY
DUCTILE IRON HINGED COVER
W/ SPRING STRUT FOR LIFT ASSIST

2 TON
DOGBONES
4" TERMS

SECTION C-C



SECTION D-D

5" x 8" x 3" DEEP K.O.
(DRAFT: T=1", B=0, S1=S2=1")

BURY DEPTH:	0.0' - 0.0' to Top
WATER LEVEL:	3.0'
DESIGN SPEC:	ASTM C857, ACI 318
AGENCY:	SDGE
APPROX. WEIGHT:	2111.67 Lbs
LOADING SPEC:	A-16 (AASHTO HS20-44)
AGENCY SPEC:	3313-T & ELEC

JENSEN PRECAST EST. 1968
WWW.JENSENPRECAST.COM

©2023 Jensen Precast. All rights reserved. All materials appearing as Jensen Precast documents and the like are proprietary work product and are protected under U.S. copyright and other laws. Unless in conjunction with business conducted with Jensen Precast, any use of Jensen Precast work product without express, written consent is prohibited, and recipient is prohibited from distributing any and all work product to non-approved third parties under penalty of civil action.

DESCRIPTION:	Pull Box 2436 Layout Assembly SDGE 3313-T & ELEC
PART NUMBER:	200056899
CREATED:	9/15/2021
REV:	B-1
LAYOUT DRAWING	
DRAWN BY:	D. Mejia
MODIFIED:	5/10/2023
SHEET:	4
2 OF 2	