

6'-0" x 9'-0" TUNNEL INTERCEPT MANHOLE x 16'-0" LONG

ITEM No.	PART No.	DESCRIPTION	CAGE/LOCATION	WEIGHT/MOUNT
1A	200070581	Tunnel Vault Intercept TVI72108 End_A - Tongue 72WX108HX30L AT&T	200070582	21,050 lbs., 5.19 C.Y.
1B	200070585	Tunnel Vault Intercept TVI72108 End_B - Tongue 72WX108HX30L AT&T	200070586	21,050 lbs., 5.19 C.Y.
2	200070579	Tunnel Vault Intercept TVI72108 Center - Groove Groove 72WX108HX48L AT&T	200070580	31,400 lbs., 7.74 C.Y.
3	200070583	Tunnel Vault Intercept TVI72108 Extension 72WX108HX48L AT&T	200070584	18,950 lbs., 4.67 C.Y.
4	100006763	BRACKET TUNNEL VAULT HBRKT3003 GALV	END SECTION CENT. & EXT. SECTION	(4) CORE MTD. (8) CORE MTD.
5		FOR DOWEL LOCATIONS. SEE SHEET 2	DWL-69X-TV16-INT-200070578	
6	100002817	INSERT THREADED FERRULE STR LOOP FX-2 3/4X6-1/8 ZINC	END SECTION EXTENSION SECTION CENTER SECTION CENT. & EXT. SECTION	(62) REQ'D (24) REQ'D (50) REQ'D (2) CORE MTD. (2) CORE MTD.
7	100005931	GROUND INSERT BOTTLE ROCKET 1/4-20 BRASS w/ 0.1875x16" STEEL ROD, "GRD" TO BE STENCILED IN RED LETTERS	END SECTION CENT. & EXT. SECTION	(2) CORE MTD. (2) CORE MTD.
8	100002782	INSERT THREADED METAL 1/4-20 UNC 1.5IN P15T MX-25	END SECTION	(2) CORE MTD.
9	100002882	S.S HEAD BOLT FOR BONDING RIBBON	END SECTION	(2) CORE MTD.
10	100003026	ANCHOR DOGBONE LIFT 8T X 13-3/8 GALV MB DB-52	END SECTION CENT. & EXT. SECTION	(4) SURFACE MTD. (4) SHELL MTD.
11	100002881	PULL IRON OFFSET .875DIA 6 IH X 10.875L X 6.75W GALV	END SECTION	(2) CORE MTD.
12	100015105	ANCHOR DOGBONE LIFT 8T X 10 GALV MB DB-52	END SECTION CENT. & EXT. SECTION	(2) CORE MTD. (4) SHELL MTD.
13	100006420	INSERT 1/2IN PLASTIC PENNSYLVANIA THREADED INSERT	END SECTION EXTENSION SECTION CENTER SECTION INTERIOR	(20) CORE MTD. (40) CORE MTD. (60) CORE MTD. (3.5gal) REQ'D
14	100007114	COATING PAINT LATEX WHITE	END SECTION	(12) REQ'D
15	100008121	ROD THREADED COIL YELLOW DIP 3/4 X 20	END SECTION	(24) REQ'D
16	100007010	WASHER 3X3X1/2 W/7/8 HOLE GALV	EXTENSION SECTION CENTER SECTION	(24) REQ'D
17	100005749	HEX COIL NUT 3/4-4.5 POST YELLOW DIP	INTERIOR	QTY. 1
18	100002784	SEALANT JOINT BUTYL RUBBER ASTM C-990 AND M198 CS-102 1IN EQUIV X14.5FT PER BOX	END SECTION CENT. & EXT. SECTION	(4) CORE MTD. (8) CORE MTD.

STANDARDS. AASHTO LRFD BRIDGE DESIGN SPECIFICATIONS, 8TH EDITION, WITH 2022 CALTRANS AMENDMENTS, CITY OF LOS ANGELES BUREAU OF ENGINEERING STANDARD PLAN S-601, LATEST, MANUAL PART H, ASTM C-857. STRUCTURAL CALCS. #34109A.

THE FOLLOWING MATERIALS ARE TO BE SHIPPED WITH THE MANHOLE.

- (a) 12B31 LADDER STEPS, OR EQUAL
- (b) 1-3600 LADDER 10", OR EQUAL
- (c) SEE INTERCEPT PACKAGE DWG KPKINT-TV69X-200070587.

MATERIAL. CONCRETE, F<sub>c</sub>=5,500 PSI. MIX 17 INCLUDE FLY ASH AND DCI. REINFORCEMENT PER ASTM A-706, F<sub>y</sub>=60,000 PSI.

LOADS. VERTICAL LIVE LOAD: AASHTO HL-93. LIVE LOAD SURCHARGE: LA BOE PART H, FIGURE H 374-2A. MINIMUM 80 PSF (TO BOTTOM OF VAULT). SOIL LATERAL LOADS: 40 PCF (DRY), 81 PCF (SATURATED), SATURATED SOIL CONDITIONS 3'-0" BELOW GRADE. SOIL BEARING CAPACITY = 1500 PSF. DESIGN SOIL DENSITY IS 120 PCF.

LOADS NOT INCLUDED. DESIGN DOES NOT INCLUDE COOPER E-80 RAILROAD LOADS OR LATERAL OR SURCHARGE LOADS THAT ARE PRODUCED BY FOOTING OR FOUNDATIONS ADJACENT TO THE STRUCTURE. THIS SUBSTRUCTURE SHALL BE KEPT AT LEAST IN A 1:1 RATIO AWAY FROM ALL FOOTINGS AND FOUNDATIONS, UNLESS THE ENGINEER OF RECORD APPROVES IN WRITING.

INSTALLATION LIMITS. VAULT SHALL HAVE A MINIMUM COVER OF 1'-6" AND A MAXIMUM COVER OF 5'-0".

EACH CONCRETE SECTION SHALL BE MARKED ON THE INSIDE & OUTSIDE WITH "JENSEN PRECAST-FONTANA", AT# ON# AND THE DATE OF POUR.

EACH CONCRETE SECTION SHALL HAVE CAST-IN ON THE INSIDE "JENSEN", AND THE YEAR.

ALL WALLS AND CEILING SHALL BE PAINTED WHITE.

EACH PIECE TO BE STENCILED WITH ITS PART NO.

INSTALLATION. VAULT TO BE PLACED ON A MIN. 6" BASE OF CRUSHER RUN FOR EASE OF INSTALLATION AND EVEN LOAD DISTRIBUTION. BASE MATERIAL IN ACCORDANCE WITH SECTION 200-2 OF THE SSPWC (GREEN BOOK).

ADDITIONAL SUBMITTAL, PERMIT AND CONSTRUCTION PLAN REVIEW WILL BE REQUIRED FOR EACH PROJECT LOCATION. SUBMIT TO CITY ENGINEER FOR APPROVAL PRIOR TO START OF ANY CONSTRUCTION.

ALL INSTALLATIONS SHALL COMPLY WITH ALL OTHER LOCAL GOVERNING CODES AND REGULATIONS INCLUDING CALIFORNIA PUBLIC UTILITIES COMMISSION REGULATIONS.

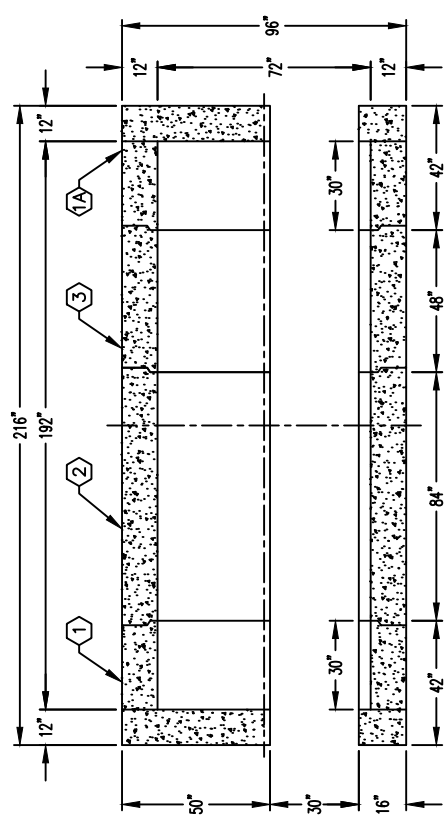


AutoCAD 2021

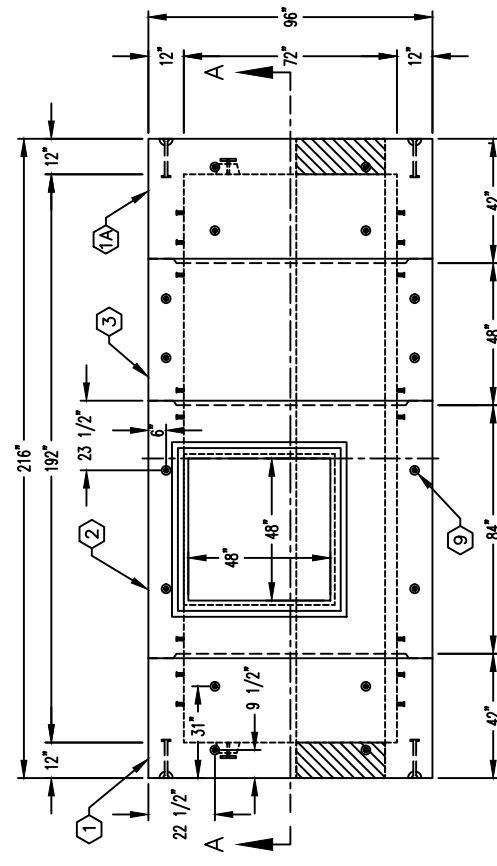
RIGGING EQUALIZER REQUIRED TO EQUALIZE LOAD TO (4) FOUR LIFTING POINTS WITH 60" MIN. SLING ANGLE, MEASURED FROM HORIZONTAL.

MINIMUM EXCAVATION SIZE:  
9'-0" x 19'-0" x DEPTH REQ'D.

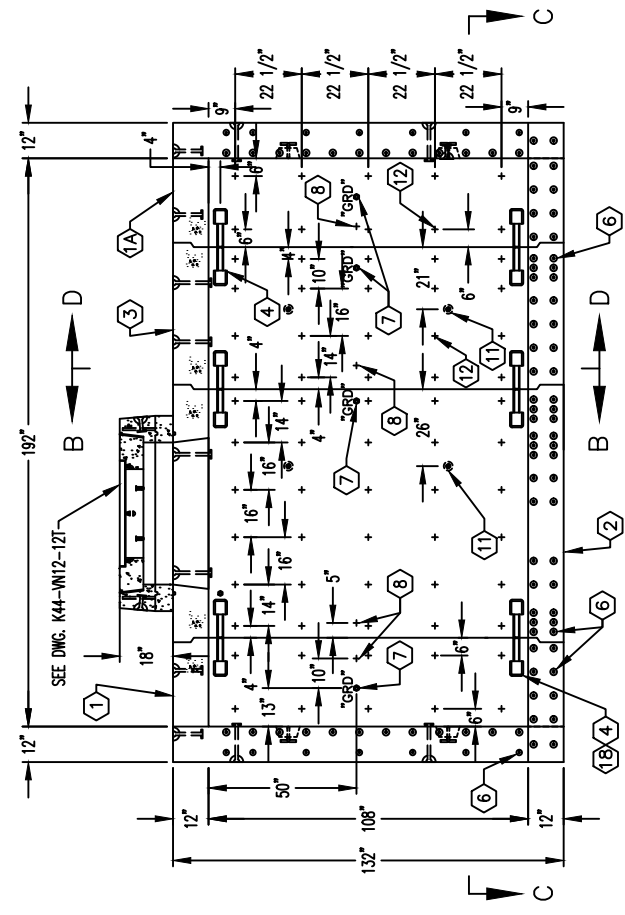
SHEET 1 OF 2



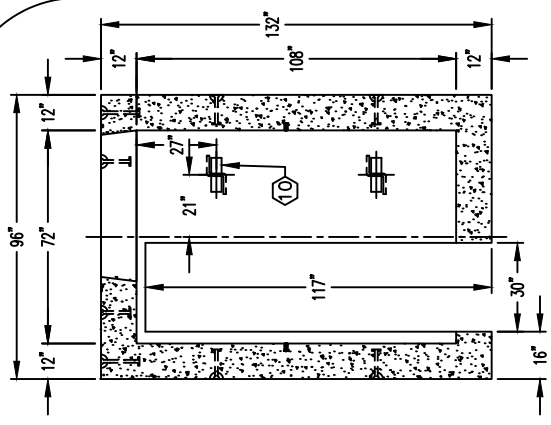
SECTION C-C



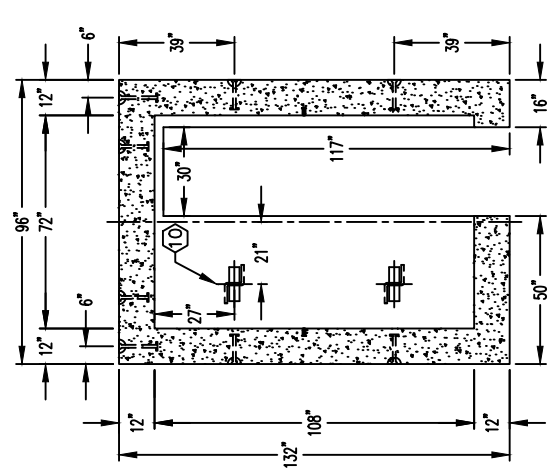
PLAN VIEW



SECTION A-A



SECTION B-B



SECTION D-D

DATE	12/12/2022	DRAWN BY	J. PRADO	CHECKED BY	
#		REVISION		BY	CHK
A	12/20/2022	DESCRIPTION		JP	
B	12/21/2023	INITIAL RELEASE		RR	
		ADDED 3/8" INSERTS FOR TV BRACKETS			

K69X-TV16-INT-200070578  
PER CUSTOMER SPECS.