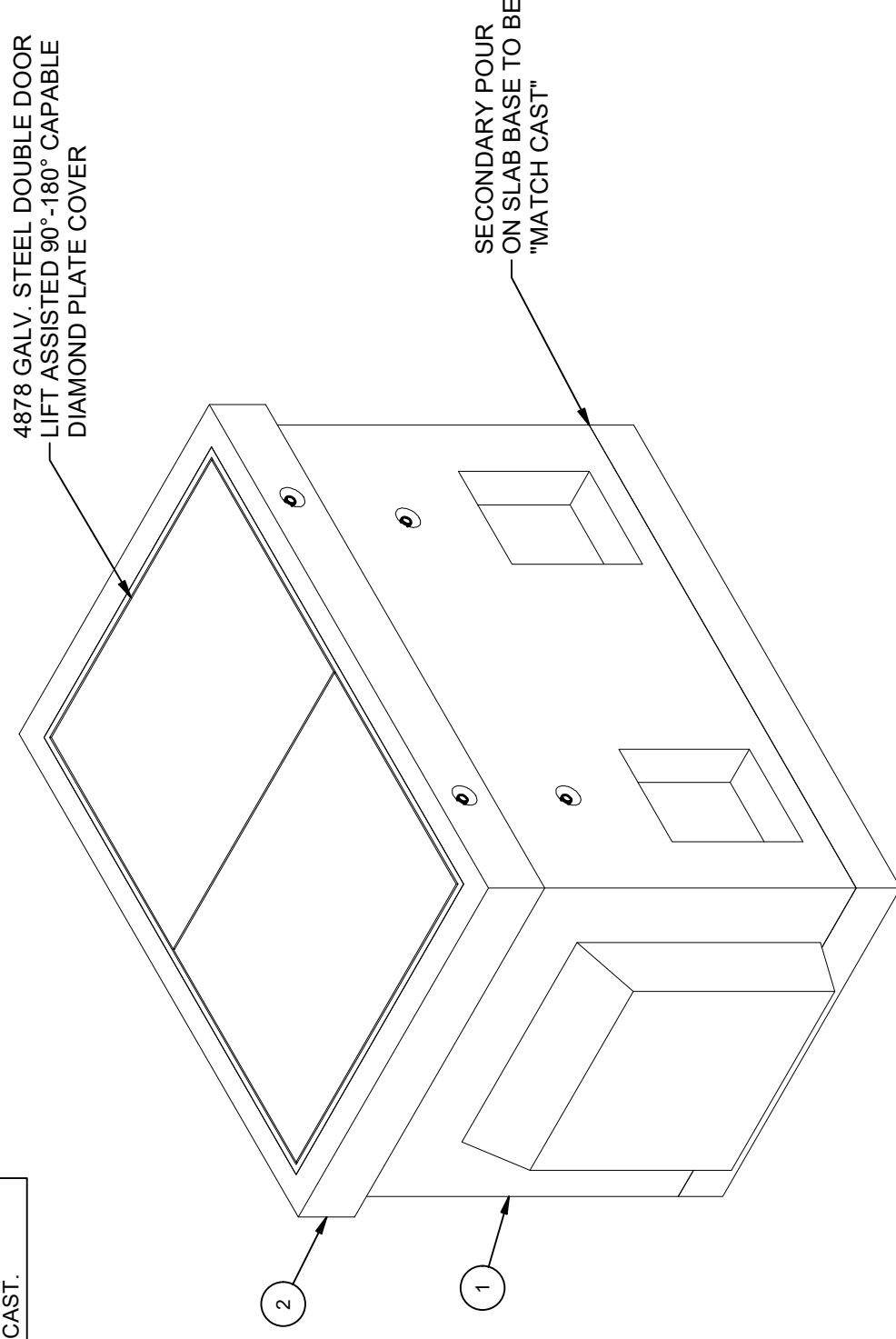


DESIGN NOTES

- DESIGNED IN ACCORDANCE WITH AASHTO HS20-44 TRAFFIC BRIDGE LOADING USING 5,500 PSI COMPRESSIVE STRENGTH CONCRETE AND 60,000 PSI YIELD STRENGTH ASTM A-706 STEEL REINFORCEMENT PER CALCS. #35041.
- COVER DESIGNED FOR 16,000 LB LOAD ON 10" X 20" FOOTPRINT, WITH 30% IMPACT RESTRICTED TO UNRESTRICTED PARKING LANES AND ALLEYS WHERE TRAFFIC SPEED IS LIMITED TO 15 MILES PER HOUR. (ASTM LOAD LEVEL 5)
- MINIMUM EXCAVATION SIZE: 6'-0" X 9'-9" X DEPTH REQ'D.
- VAULT TO BE PLACED ON A MIN. 6" BASE OF CRUSHER RUN FOR EASE OF INSTALLATION AND EVEN LOAD DISTRIBUTION.
- "GRD" SHALL BE STENCILED IN RED LETTERS ON THE CONCRETE ABOVE EACH INSERT.
- ALL PARTS TO BE STENCILED: MFG DATE / JOB NUMBER / PRODUCT ID / WEIGHT.
- OPTIONAL, 12" EXTENSION (200073489), BOX DESIGNED FOR MAXIMUM 7'-0" HEIGHT.
- FOR COMPLETE DESIGN AND PRODUCT INFORMATION CONTACT JENSEN PRECAST.

BILL OF MATERIALS

ITEM	UNIT QTY	QTY	PART NUMBER	DESCRIPTION	MASS (lb)
1	1	1	200088205	Intercept Bottom Assembly 4878x54 Edison HP-228, PB-8 INT	10879
2	1	1	200020767	Top Riser 4878x9.5 Cast-In Cover EDISON HP 228, PB-8	2642
3	1,000 gal	1,000 gal	100006420	COATING PAINT LATEX WHITE	
4	1,000 ul	1,000 ul	100005749	SEALANT JOINT BUTYL RUBBER ASTM C-990 AND M198 CS-102 1IN EQUIV X14.5FT PER BOX 118FT	



ISOMETRIC VIEW

LIFTING NOTES

- FIELD INSTALLATION: PLANT DEMOLDING: MINIMUM HANDLING CONCRETE STRENGTH F_c = 5500 PSI RIGGING EQUALIZER REQUIRED TO EQUALIZE LOAD TO 4 LIFTING POINTS WITH A SLING ANGLE BETWEEN 60° AND 90°

BURY DEPTH:	0.0' - 0.0' to Top
WATER LEVEL:	3.0'
DESIGN SPEC:	ACI 318, ASTM C857
AGENCY:	Edison
APPROX. WEIGHT:	13521.12 Lbs
LOADING SPEC:	A-16 (AASHTO HS20-44)
AGENCY SPEC:	HP228, PB-8 INT

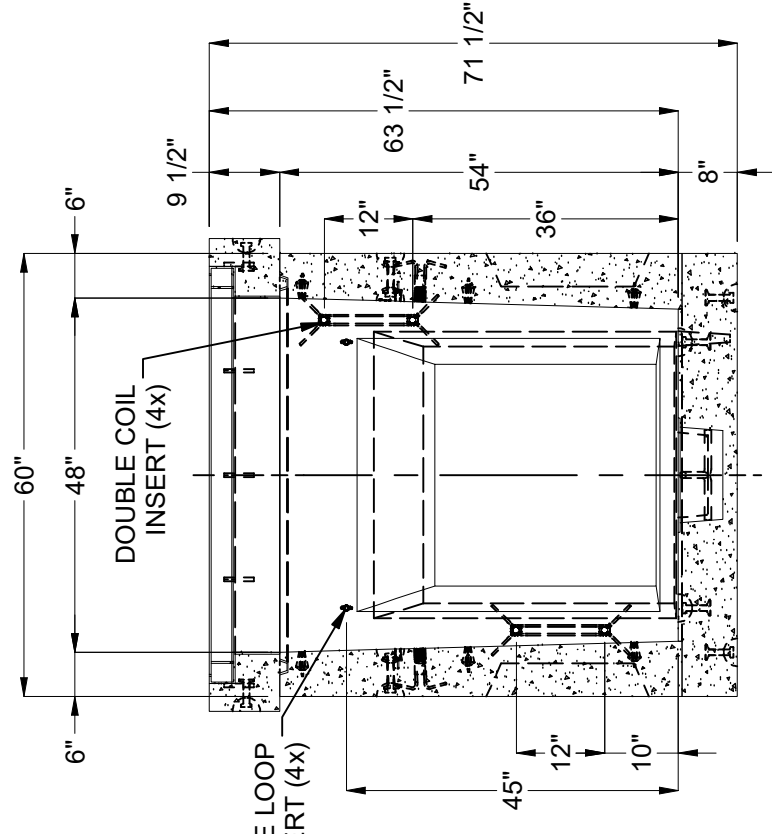
©2024 Jensen Precast. All rights reserved. All materials appearing as Jensen Precast documents and the like are proprietary work product and are protected under U.S. copyright and other laws. Unless in conjunction with business conducted with Jensen Precast, any use of Jensen Precast work product without express, written consent is prohibited, and recipient is prohibited from distributing any and all work product to non-approved third parties under penalty of civil action.

JENSEN PRECAST EST. 1968
WWW.JENSENPRECAST.COM

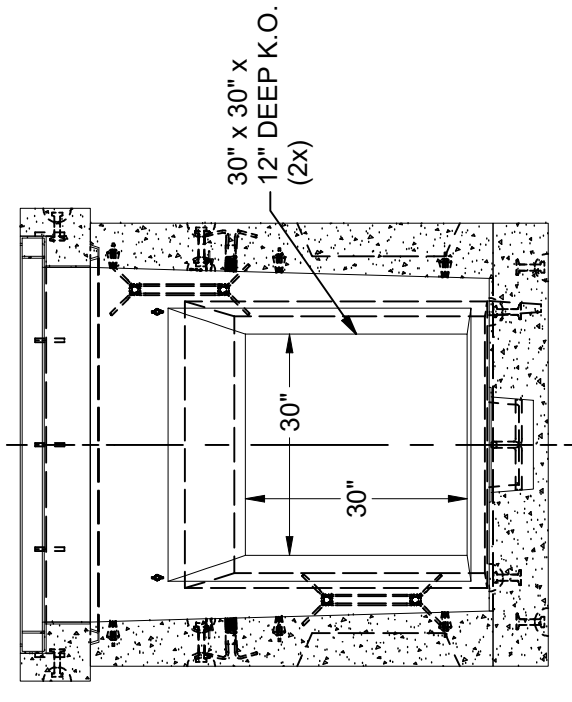
REVISION HISTORY

REV	DESCRIPTION	DATE	APPROVED
D	ADDED INTERIOR PAINT & REVISED DESCRIPTION	7/30/2024	

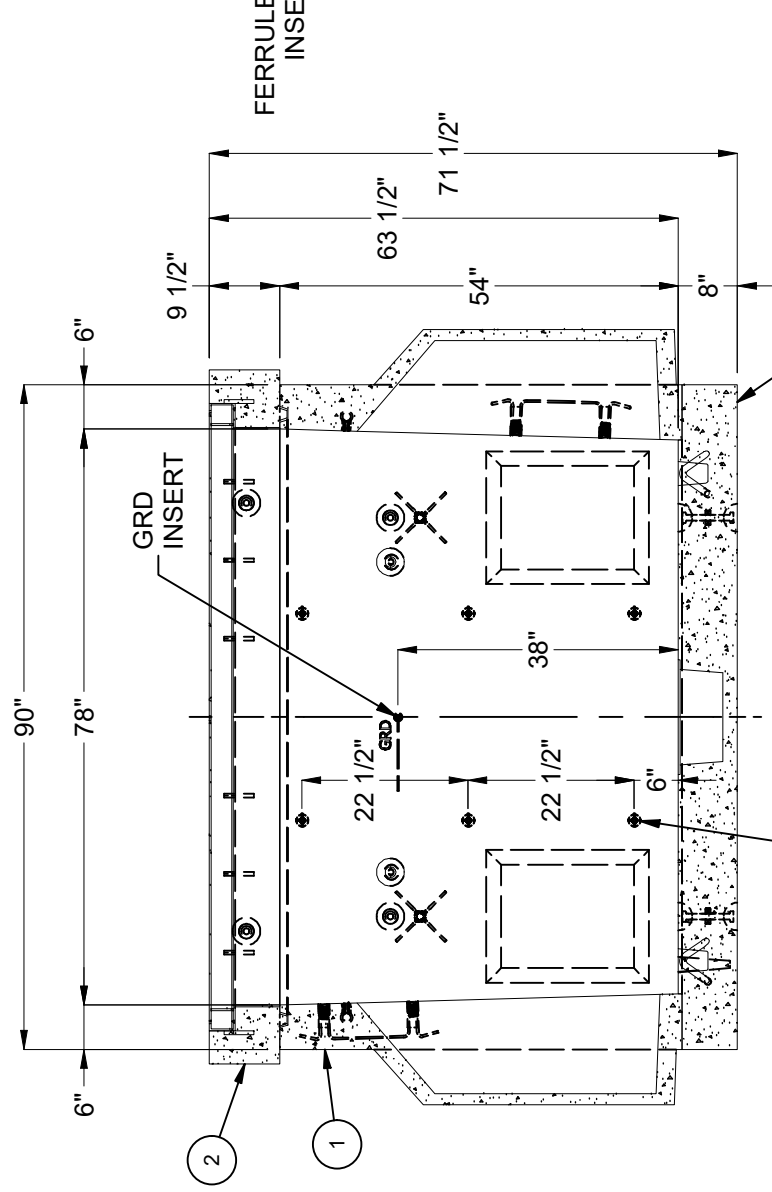
DESCRIPTION:	Intercept Vault Layout 4878x63.5 Knockout Ducted, Sump 48"x78"C Edison HP228, PB-8 INT. Paint - White Latex
PART NUMBER:	200086986
CREATED:	3/19/2024
REV:	D-1
SHEET:	61
	1 OF 2
LAYOUT REVIEW	J. Prado
DRAWN BY:	J. Prado
MODIFIED:	7/30/2024



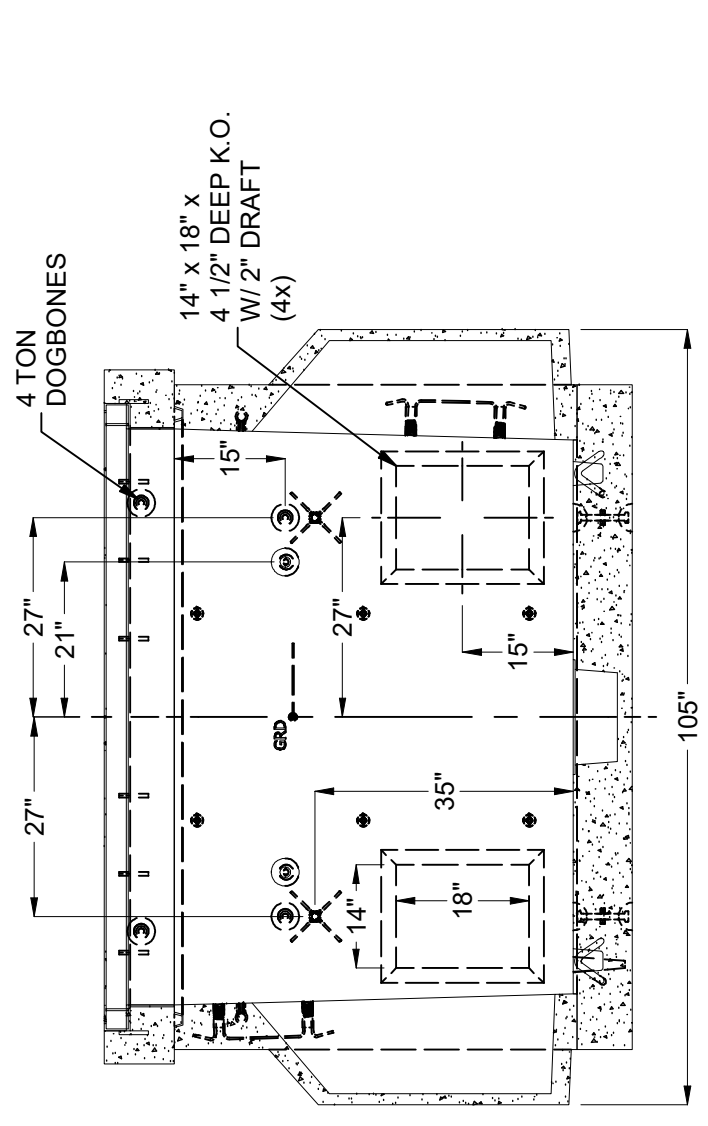
SECTION B-B



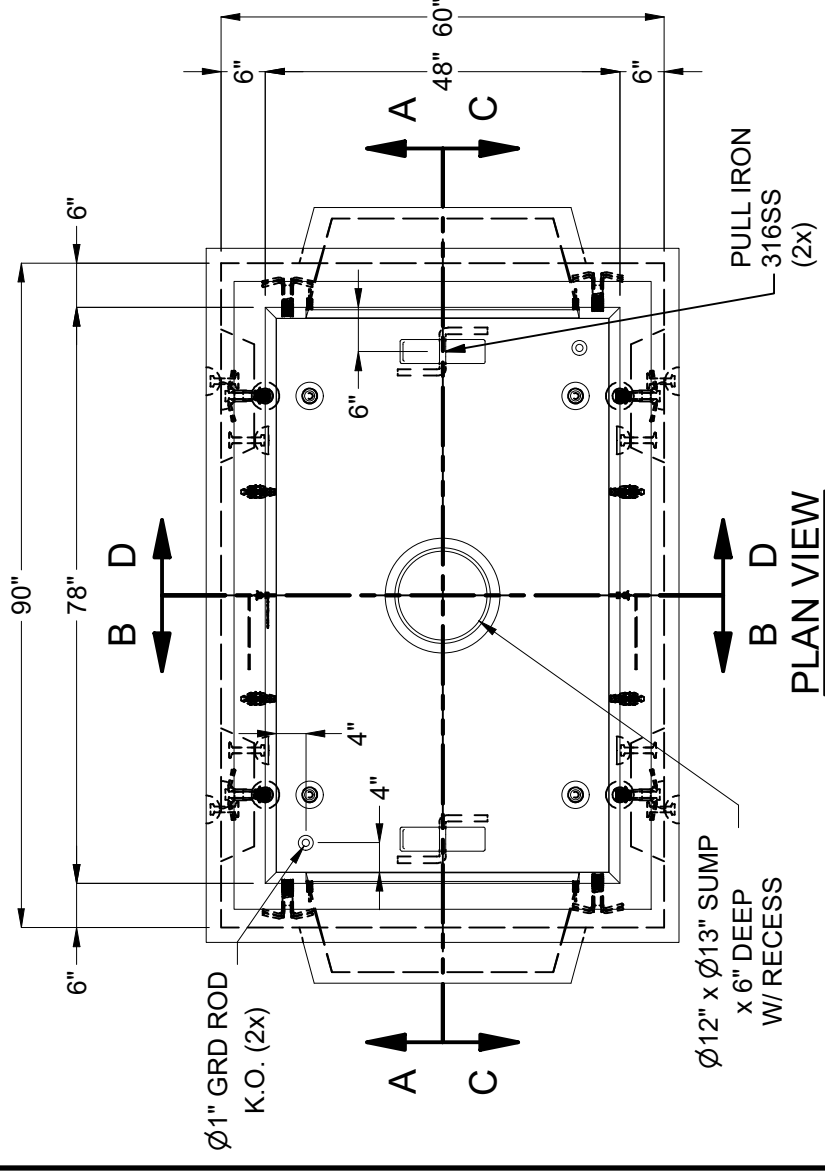
SECTION D-D



SECTION A-A



SECTION C-C



PLAN VIEW

BURY DEPTH:	0.0' - 0.0' to Top	DESCRIPTION:	Intercept Vault Layout 4878x63.5 Knockout Ducted, Sump 48"x78" C Edison HP228, PB-8 INT. Paint - White Latex
WATER LEVEL:	3.0'	APPROX. WEIGHT:	13521.12 Lbs
DESIGN SPEC:	ACI 318, ASTM C857	LOADING SPEC:	A-16 (AASHTO HS20-44)
AGENCY:	Edison	AGENCY SPEC:	HP228, PB-8 INT
REV:		REV:	
D-1		D-1	
SHEET:		SHEET:	
62		62	
2 OF 2		2 OF 2	
LAYOUT DRAWING		LAYOUT DRAWING	
DRAWN BY:		DRAWN BY:	
J. Prado		J. Prado	
MODIFIED:		MODIFIED:	
7/30/2024		7/30/2024	
PART NUMBER:		PART NUMBER:	
200086986		200086986	
CREATED:		CREATED:	
3/19/2024		3/19/2024	



EST. 1968

WWW.JENSENPRECAST.COM

©2024 Jensen Precast. All rights reserved. All materials appearing as Jensen Precast documents and the like are proprietary work product and are protected under U.S. copyright and other laws. Unless in conjunction with business conducted with Jensen Precast, any use of Jensen Precast work product without express, written consent is prohibited, and recipient is prohibited from distributing any and all work product to non-approved third parties under penalty of civil action.