

LIFTING NOTES

FIELD INSTALLATION: PLANT DEMOLDING: MINIMUM HANDLING CONCRETE STRENGTH $F_c = 5500$ PSI RIGGING EQUALIZER REQUIRED TO EQUALIZE LOAD TO 4 LIFTING POINTS WITH A SLING ANGLE BETWEEN 60° AND 90°

STOCKPILE - JENSEN PRECAST
CITY OF LOS ANGELES INSPECTION
REQUIRED WO# C0034604

COAT EXTERIORS WITH METHANE-
WATERPROOF COATING (VAPORLOCK).

NOTES:

- STANDARDS. AASHTO LRFD BRIDGE DESIGN SPECIFICATIONS, 8TH EDITION, WITH 2022 CALTRANS AMENDMENTS, CITY OF LOS ANGELES BUREAU OF ENGINEERING STANDARD PLAN S-601, LATEST, MANUAL PART H, LADWP P 178, ASTM C-857. STRUCTURAL CALCS FOR BOX: #33468.
- MATERIAL. CONCRETE; $F_c=5,500$ PSI. MIX TO INCLUDE FLY ASH AND DCI. REINFORCEMENT PER ASTM A-706 OR A-615, $F_y=60,000$.
- LOADS. VERTICAL LIVE LOAD: AASHTO HL-93, INCLUDING GREATER OF HS-20 TRUCK OR TANDEM. LIVE LOAD SURCHARGE: PER LA BOE PART H, FIGURE H 374.2A. MINIMUM 80 PSF (TO BOTTOM OF VAULT) OR LADWP P 178 (104 PSF). SOIL LATERAL LOADS: 40 PCF (DRY), 81 PCF (SATURATED), SATURATED SOIL CONDITIONS 3'-0" BELOW GRADE. SOIL BEARING CAPACITY = 1,500 PSF. DESIGN SOIL DENSITY IS 120 PCF.
- LOADS NOT INCLUDED. DESIGN DOES NOT INCLUDE COOPER E-80 RAILROAD LOADS OR LATERAL OR SURCHARGE LOADS THAT ARE PRODUCED BY FOOTING OR FOUNDATIONS ADJACENT TO THE STRUCTURE. THIS SUBSTRUCTURE SHALL BE KEPT AT LEAST IN A 1:1 RATIO AWAY FROM ALL FOOTINGS AND FOUNDATIONS, UNLESS THE ENGINEER OF RECORD APPROVES IN WRITING.
- INSTALLATION. VAULT TO BE PLACED ON WELL COMPACTED SOIL WITH MIN. 6" DEPTH OF TAMPED CRUSHED AGGREGATE BASE FOR EASE OF INSTALLATION AND EVEN LOAD DISTRIBUTION USING A VIBRATORY PLATE COMPACTOR IN A MIN. OF TWO PASSES. BASE TO EXTEND 12" BEYOND THE STRUCTURE. BASE MATERIAL IN ACCORDANCE WITH SECTION 200-2.2 OF THE SSPWC (GREEN BOOK) PER LADWP SPECIFICATION NO. 104.
- INSTALLATION LIMITS. VAULT SHALL HAVE A MINIMUM COVER 1'-6" AND A MAXIMUM COVER OF 4'-0".
- EACH CONCRETE SECTION SHALL BE MARKED ON THE INSIDE & OUTSIDE WITH "JENSEN PRECAST", THE DESIGNATION "DWI/FA-CN", AND THE DATE OF THE POUR.
- EACH CONCRETE SECTION SHALL HAVE CAST-IN ON THE INSIDE "JENSEN", THE YEAR, AND THE DESIGNATION "FA-CN".
- EACH PIECE TO BE STENCILLED WITH ITS PART NO.
- NO SHARP OR ROUGH EDGES ON THE TERMINATORS ENTERING THE VAULT.
- CITY OF LA APPROVED 4' X 4' VAULT NECK AND COVER, WITH APPROVED CAST IRON COVER TO BE USED WITH THIS VAULT.
- MINIMUM EXCAVATION SIZE: 10'-7" X 18'-7" X DEPTH REQ'D.
- ADDITIONAL SUBMITTAL, PERMIT AND CONSTRUCTION PLAN REVIEW WILL BE REQUIRED FOR EACH PROJECT LOCATION. SUBMIT TO CITY ENGINEERS FOR APPROVAL PRIOR TO START OF ANY CONSTRUCTION.
- ALL INSTALLATIONS SHALL COMPLY WITH ALL OTHER LOCAL GOVERNING CODES AND REGULATION INCLUDING CALIFORNIA PUBLIC UTILITIES COMMISSION REGULATIONS.

BURY DEPTH:	1.5' - 4.0' to Top
WATER LEVEL:	3.0'
DESIGN SPEC:	AASHTO LRFD/ACI 318, ASTM C857
AGENCY:	LADWP
APPROX. WEIGHT:	105408.91 Lbs
LOADING SPEC:	AASHTO HL-93
AGENCY SPEC:	H-202 G-3 R22 COLA



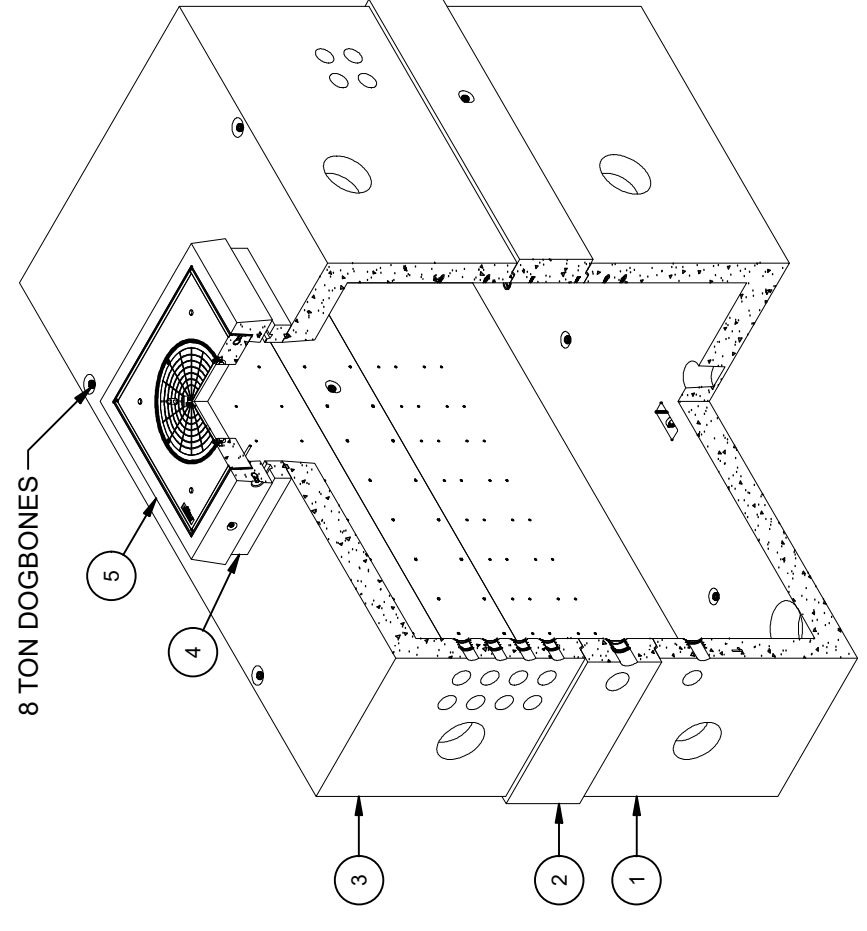
EST. 1968

WWW.JENSENPRECAST.COM

©2024 Jensen Precast. All rights reserved. All materials appearing as Jensen Precast documents and the like are proprietary work product and are protected under U.S. copyright and other laws. Unless in conjunction with business conducted with Jensen Precast, any use of Jensen Precast work product without express, written consent is prohibited, and recipient is prohibited from distributing any and all work product to non-approved third parties under penalty of civil action.

BILL OF MATERIALS

ITEM	UNIT QTY	QTY	PART NUMBER	DESCRIPTION	MASS (lb)
1	1	1	100024552	Vault 96192x57 Rect. Bottom Section Knockout, Terminators Sump LADWP H-202 G-2/G-3 COLA Ext. Coating - Tremco VaporLock-m	45652
2	1	1	100024553	Riser 96192x26 Terminators LADWP H-202 G3 COLA Ext. Coating - Tremco VaporLock-m	12824
3	1	1	100024554	Vault 96192x57 Rect. Top Section 48"x48"C Knockout, Terminators LADWP H-202 G-2/G-3 COLA Ext. Coating - Tremco VaporLock-m	42342
4	1	1	100012396	Riser 4848x6 LADWP COLA 1-802 G-1B	792
5	1	1	200016649	Vault Neck and Plug Cover Assembly 4848x12 30"C LADWP 1-802 G-1B COLA INSP R-1581 PI	3398
6	1	1	100007585	LADDER HANGER ASSEMBLY GALV	
7	1	1	100009256	LADDER HOOKED GALV 14FT ED/LA I3382	
8	1	4	100009239	ROD THREADED COIL YELLOW DIP 3/4 X 10-1/2"	
9	1	8	100007010	HEX COIL NUT 3/4-4.5 ZINC - PLATED	
10	1	8	100007136	WASHER FLAT 3/4 REGULAR TYPE A ZINC	
11	1	14	100006057	STRUT SLOTTED C-CHANNEL 1-5/8 X 1-5/8 12GA BOLT-ON GALV 12IN	
12	1	2	100006062	STRUT SLOTTED C-CHANNEL 1-5/8 X 1-5/8 12GA BOLT-ON GALV 18IN	
13	1	1	100008136	STRUT SLOTTED C-CHANNEL 1-5/8 X 1-5/8 12GA BOLT-ON GALV 48IN	
14	1	13	100006058	STRUT SLOTTED C-CHANNEL 1-5/8 X 1-5/8 12GA BOLT-ON GALV 132IN	
15	1	153	100008101	SCREW BUTT HEAD CAP 1/2-12 2 304SS	
16	1	153	100007135	WASHER FLAT 1/2 TYPE A 304SS	
17	1.000 ul	1.000 ul	100005749	SEALANT JOINT BUTYL RUBBER ASTM C-990 AND M198 CS-102 1IN EQUIV X14.5FT PER BOX 118FT	



ISO VIEW

REV	DESCRIPTION	DATE	APPROVED
A-1	VN PART NUMBER UPDATED	6/3/2024	

REVISION HISTORY

DESCRIPTION: Vault Layout 96192x140 Sump 48"x48"C LADWP H-202 G-3 R22 COLA Ext. Coating - Tremco VaporLock-m

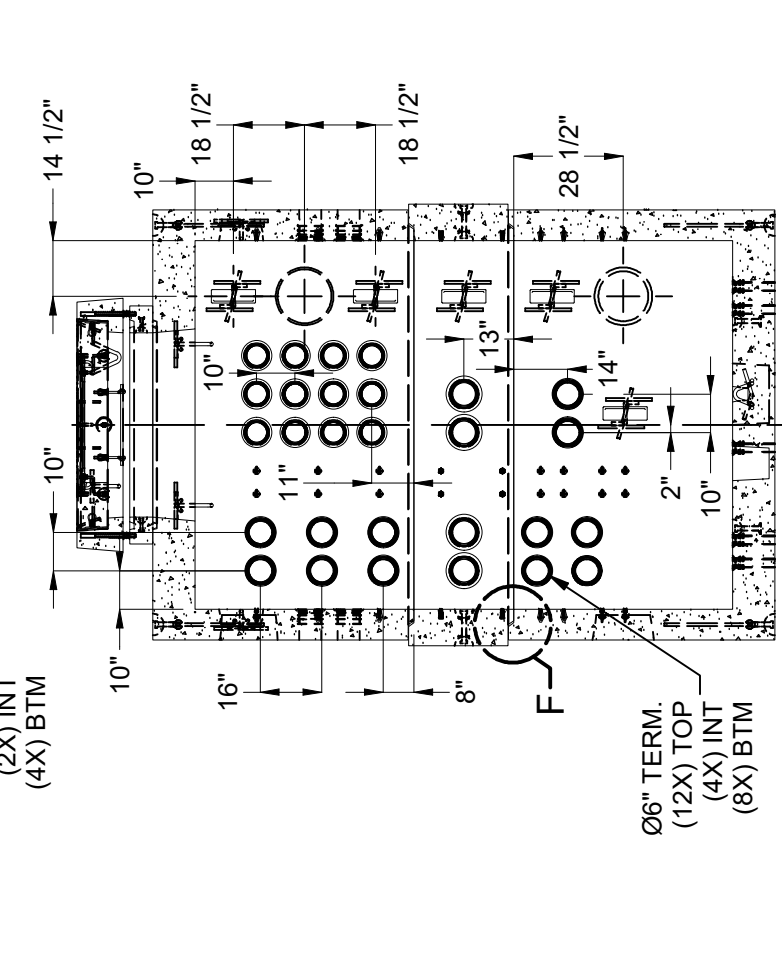
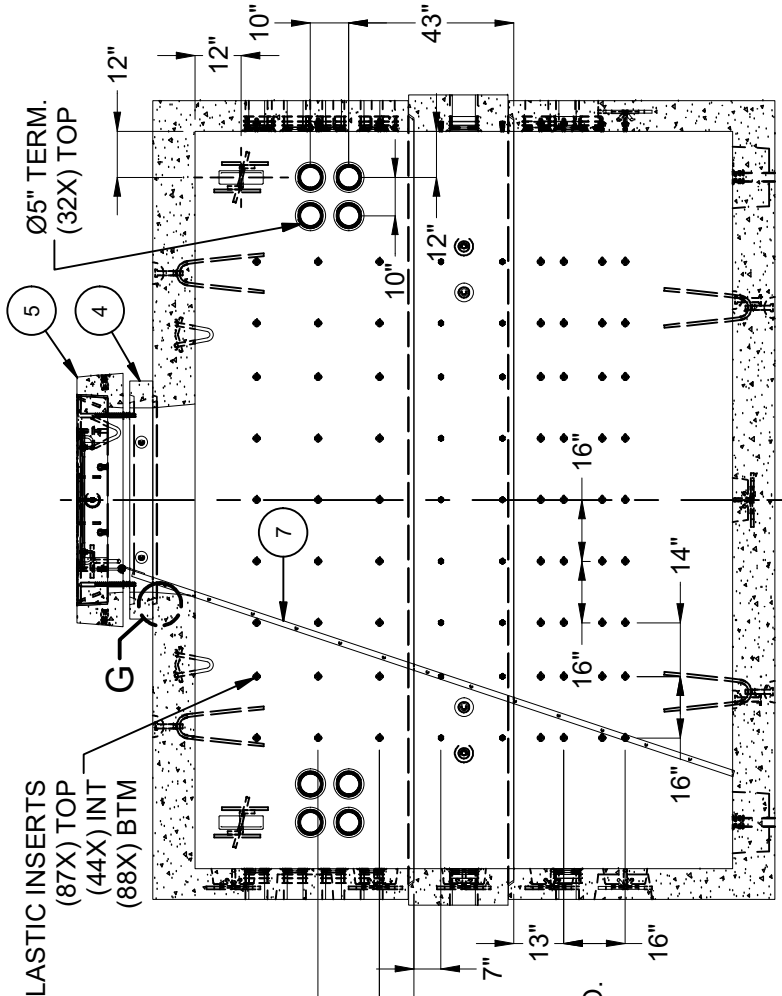
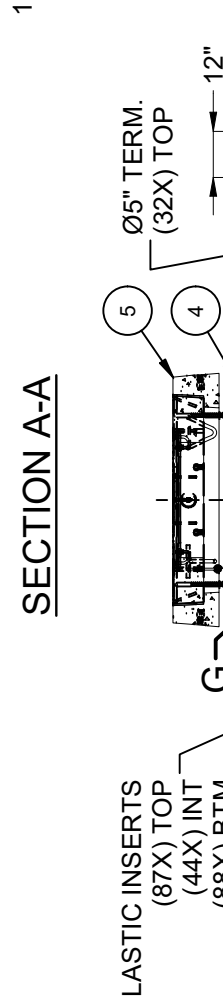
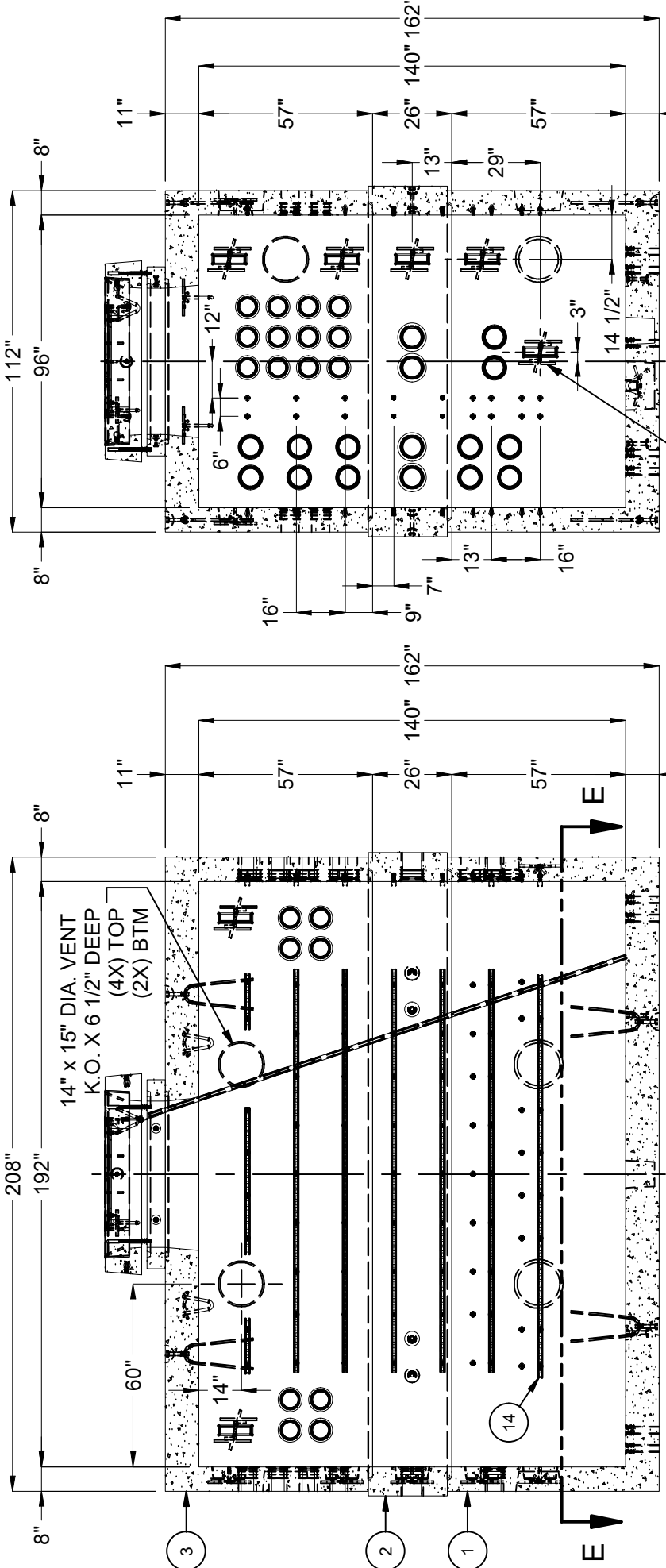
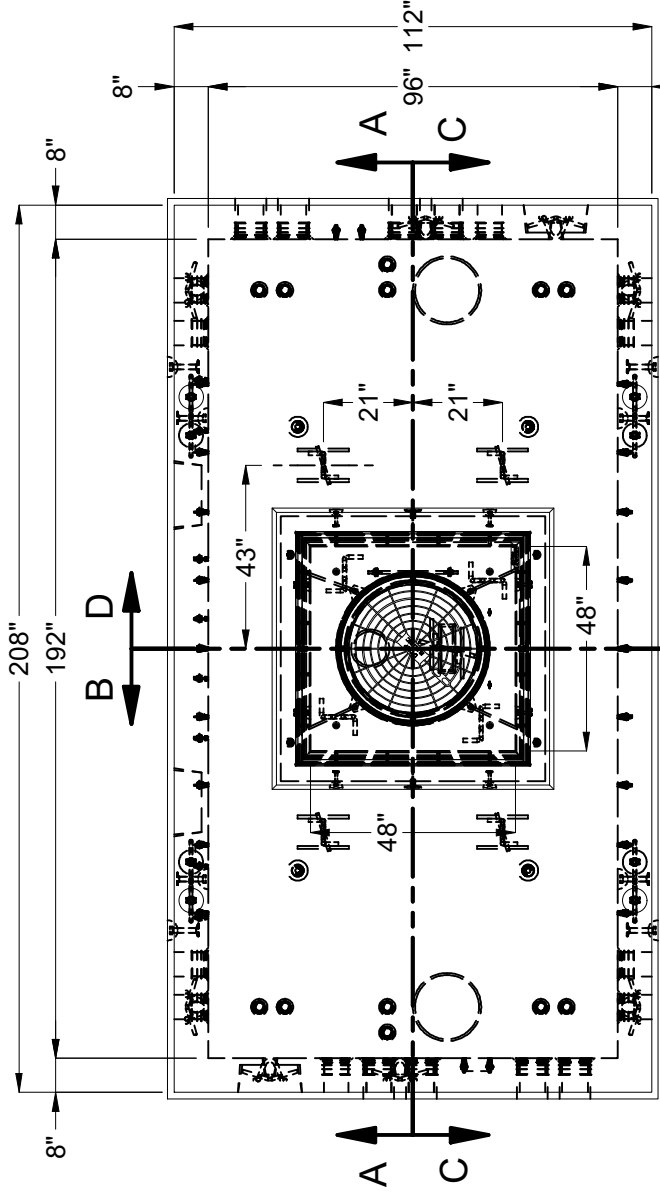
LAYOUT REVIEW

PART NUMBER: 200089114 DRAWN BY: M. Zaragoza

CREATED: 5/30/2024 MODIFIED: 6/3/2024

REV: A-1

SHEET: 1 OF 2



SECTION E-E
(BOTTOM SECTION)

SECTION C-C

SECTION D-D

BURY DEPTH:	1.5' - 4.0' to Top
WATER LEVEL:	3.0'
DESIGN SPEC:	AASHTO LRFD/ACI 318, ASTM C857
AGENCY:	LADWP
APPROX. WEIGHT:	105408.91 Lbs
LOADING SPEC:	AASHTO HL-93
AGENCY SPEC:	H-202 G-3 R22 COLA

JENSEN PRECAST EST. 1968
WWW.JENSENPRECAST.COM

©2024 Jensen Precast. All rights reserved. All materials appearing as Jensen Precast documents and the like are proprietary work product and are protected under U.S. copyright and other laws. Unless in conjunction with business conducted with Jensen Precast, any use of Jensen Precast work product without express, written consent is prohibited, and recipient is prohibited from distributing any and all work product to non-approved third parties under penalty of civil action.

DESCRIPTION:	Vault Layout 96"192x140 Sump 48"x48"C LADWP H-202 G-3 R22 COLA Ext. Coating - Tremco VaporLock-m
LAYOUT DRAWING	
PART NUMBER:	200089114
DRAWN BY:	M. Zaragoza
CREATED:	5/30/2024
MODIFIED:	6/3/2024