

# 10'-6" x 10'-6" PAD W/ 8' x 9'-4" x 5' ENCLOSURE

MODEL K106106-SB60-N-1215

L.A.D.W.P. SPEC.  
UB721-15

STRUCTURE DESIGNED IN ACCORDANCE WITH:

AASHTO LOAD FACTOR DESIGN METHOD FOR TRANSFORMER WEIGHT AND/OR 300 LBS/FT<sup>2</sup> LIVE LOAD.

SUBSTRUCTURE DESIGNED FOR AASHTO H-20 TRAFFIC SURCHARGE LOAD

ASTM C-857 STANDARD PRACTICE FOR MINIMUM STRUCTURAL DESIGN LOADING FOR UNDERGROUND PRECAST CONCRETE UTILITY STRUCTURES

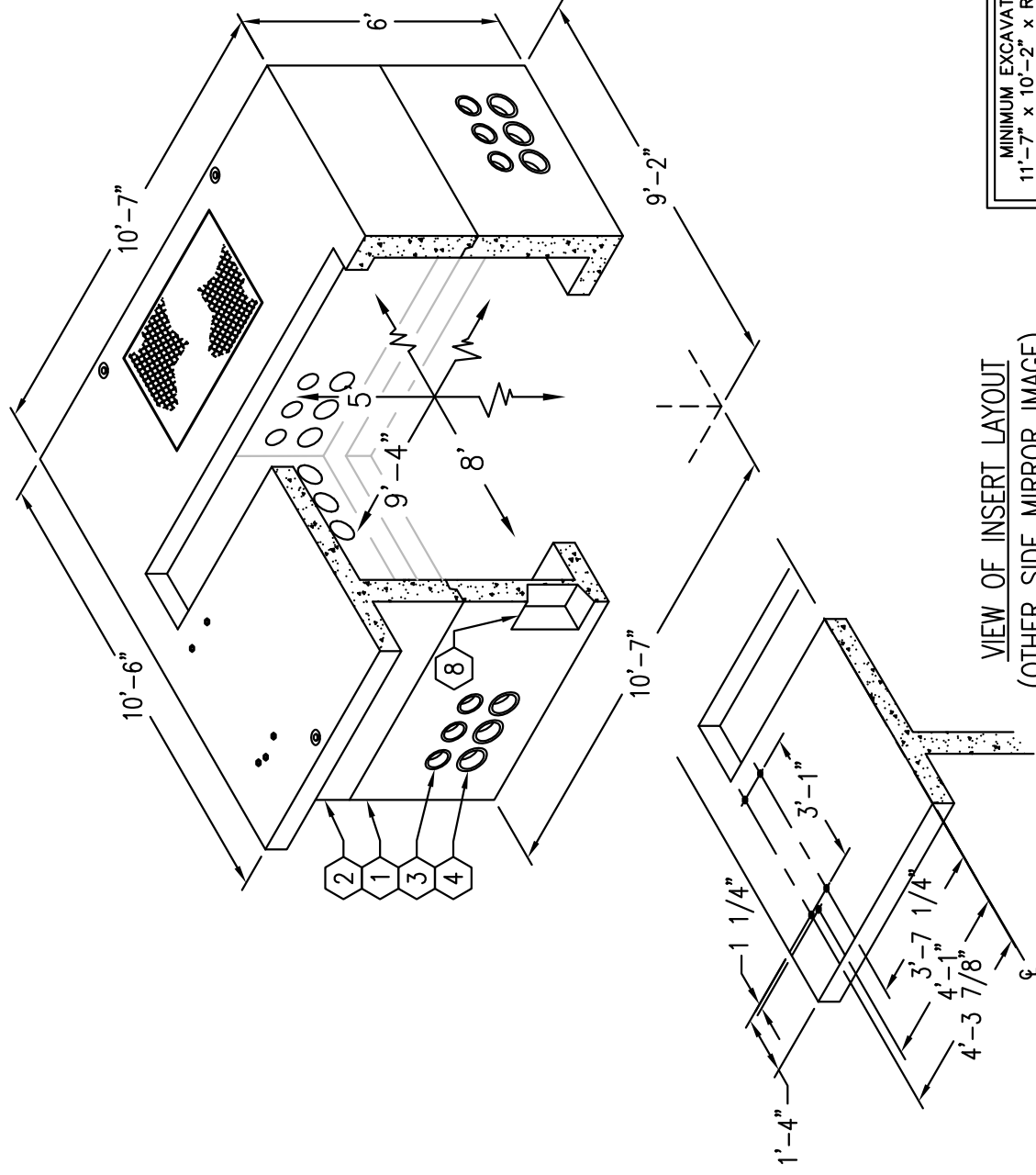
AMERICAN CONCRETE INSTITUTE ACI 318-05

CONCRETE COMPRESSIVE STRENGTH  $F'_c = 5500$  PSI

REINFORCEMENT IN ACCORDANCE WITH ASTM A-706 WITH A YIELD STRENGTH OF  $F_y = 60,000$  PSI.

6" MINIMUM COMPACTED GRANULAR MATERIAL RECOMMENDED FOR SUB-BASE FOR EASE OF INSTALLATION AND EVEN LOAD DISTRIBUTION

1. SB894-B36-1215, 36" BOTTOM SECTION, WT. 12,331 lbs.
2. SB894-T24-1215, 24" TRANSFORMER PAD, WT. 13,700 lbs.
3. 5" DIA. TERMINATOR W/ DOUBLE MEMBRANE.
4. 6" DIA. TERMINATOR.
5. 30" x 48" ANGLE FRAME CAST-IN WITH GALV. COVER MARKED "LADWP-E".
6. 5/8" DIA. LOOP INSERTS.
7. 1" DIA. COIL THREADED INSERT.
8. 14" x 14" THIN WALL KNOCKOUT x 5 1/2" DEEP.



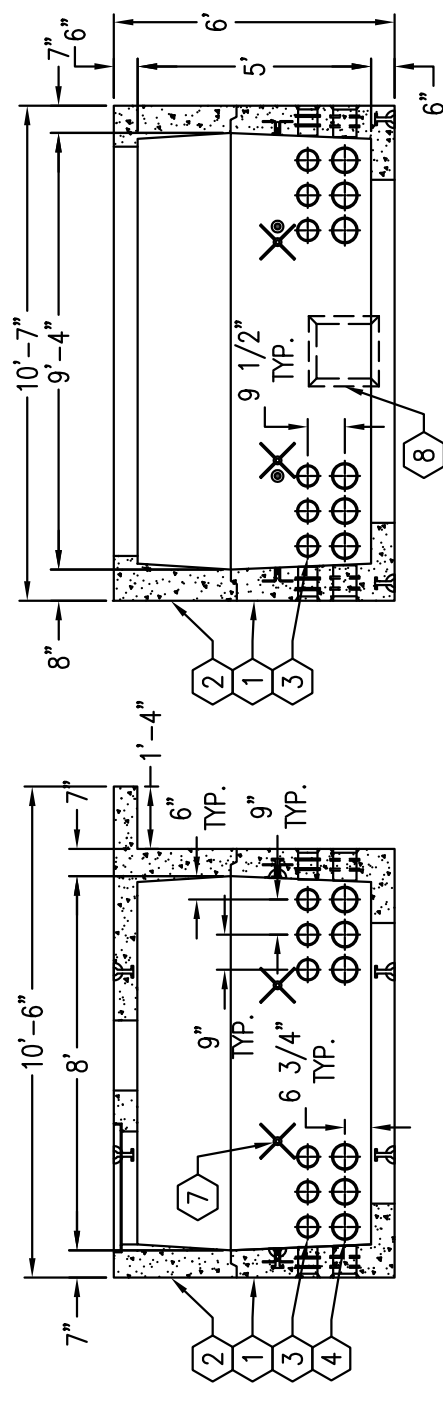
VIEW OF INSERT LAYOUT  
(OTHER SIDE MIRROR IMAGE)

MINIMUM EXCAVATION SIZE:  
11'-7" x 10'-2" x REQ'D DEPTH

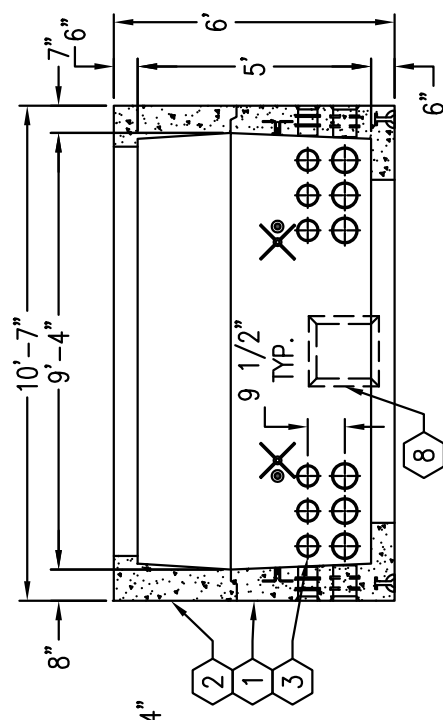
# 10'-6" x 10'-6" PAD W/ 8' x 9'-4" x 5' ENCLOSURE

MODEL K106106-SB60-N-1215

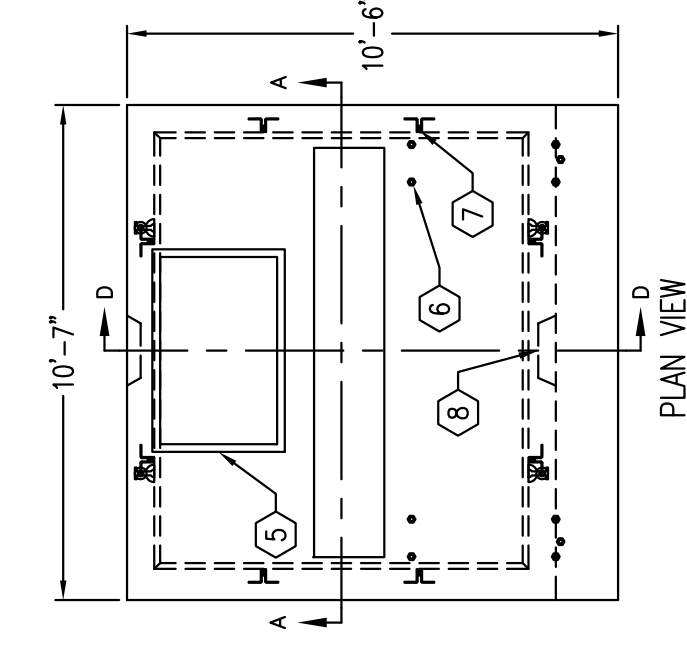
L.A.D.W.P. SPEC.  
UB721-15



SECTION D-D



SECTION A-A



ENCLOSURE W/O PAD

PLAN VIEW