

2' x 3' x 3'

DUCTED INTERCEPT BOX

MODEL K2436-DI36-12

L.A.D.W.P. SPEC.
E-541 G1

NOTES:

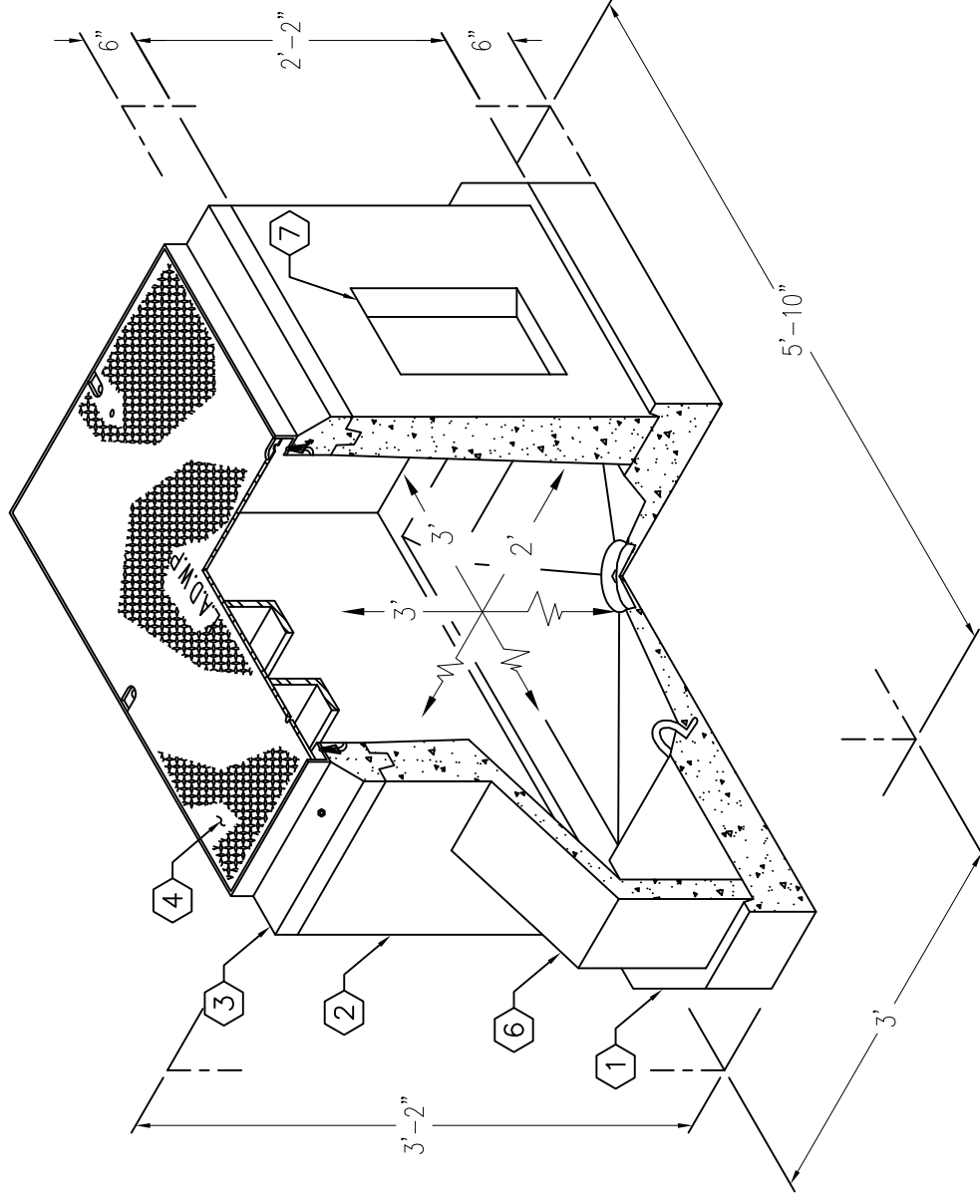
STRUCTURE DESIGNED IN ACCORDANCE WITH:

- AASHTO H-20 TRAFFIC BRIDGE LOADING
- ASTM C-857 STANDARD PRACTICE FOR MINIMUM STRUCTURAL DESIGN LOADING FOR UNDERGROUND PRECAST CONCRETE UTILITY STRUCTURES
- AMERICAN CONCRETE INSTITUTE ACI 318-05

- CONCRETE COMPRESSIVE STRENGTH $F'_c = 5500$ PSI
- REINFORCEMENT IN ACCORDANCE WITH ASTM A-706 WITH A YIELD STRENGTH OF $F_y = 60,000$ PSI.
- 6" MINIMUM COMPACTED GRANULAR MATERIAL RECOMMENDED FOR SUB-BASE FOR EASE OF INSTALLATION AND EVEN LOAD DISTRIBUTION.
- STEEL COVER DESIGNED FOR H-20-44 TRAFFIC LOADING. FOR OFF STREET USE ONLY.
- RPM COVER DESIGNED FOR PARKWAY LOADING 300 PSF.

- 1. PB2436-B-05, 5" BASE SLAB, WT. 1450 lbs.
- 2. PB2436D-I27-05, 27" INTERMEDIATE SECTION, WT. 950 lbs.
- 3. PB2436-T6E, 6" TOP SECTION WITH GALV. FRAME, CAST-IN, WT. 200 lbs.
- 4A. ONE "PIECE" BOLT DOWN TRAFFIC SLIP RESISTANT COVER.
- 4B. GALVANIZED, MARKED "L.A.D.W.P.", WT. 160 lbs. ONE "PIECE" RPM PARKWAY COVER, MARKED "L.A.W.P.D."
- 5. 6" x 6 1/2" DIA. SUMP x 1" DEEP.
- 6. 11" x 11" DUCT KNOCKOUT x 13 1/2" DEEP.
- 7. 8" x 16" K.O. x 3" DEEP.
- 8. 7/8" DIA. PULL IRON.
- 9. 1" DIA. GROUND KNOCKOUT.
- 10. 1/2" PLASTIC INSERT.

(PB-1-INT) PARKWAY ASSEMBLY WITH RPM COVER K2436-DI36-12P.
(PB-2-INT) LIGHT TRAFFIC ASSEMBLY WITH STEEL COVER K2436-DI36-12T.



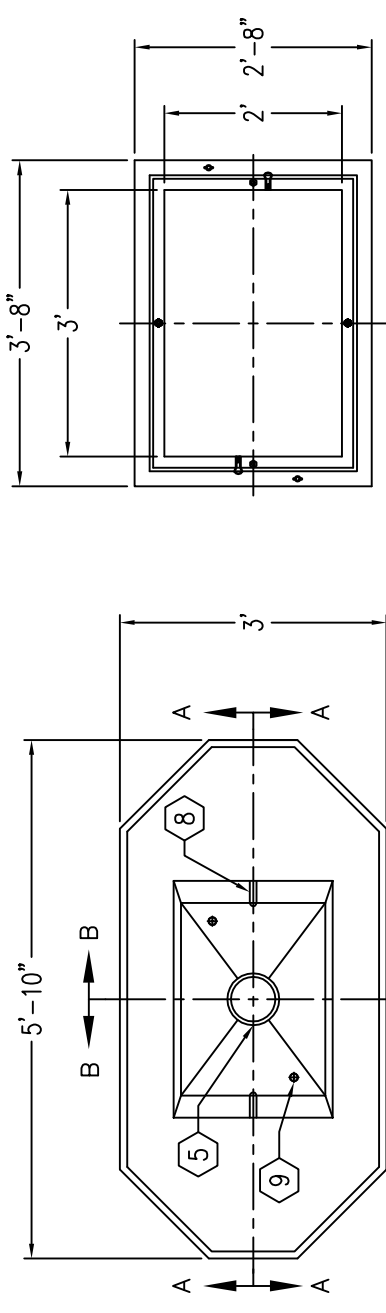
MINIMUM EXCAVATION SIZE:
4'-0" x 6'-10" x REQ'D DEPTH

2' x 3' x 3'

DUCTED INTERCEPT BOX

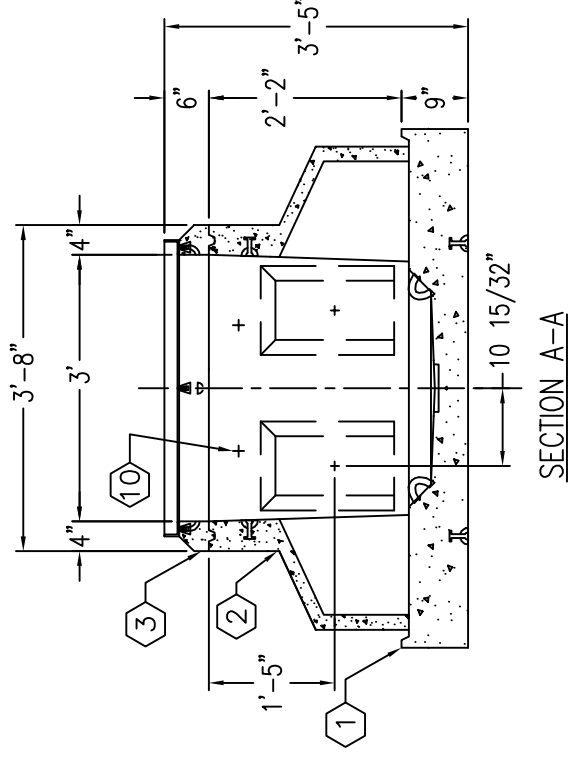
MODEL K2436-DI36-12

L.A.D.W.P. SPEC.
E-541 G1

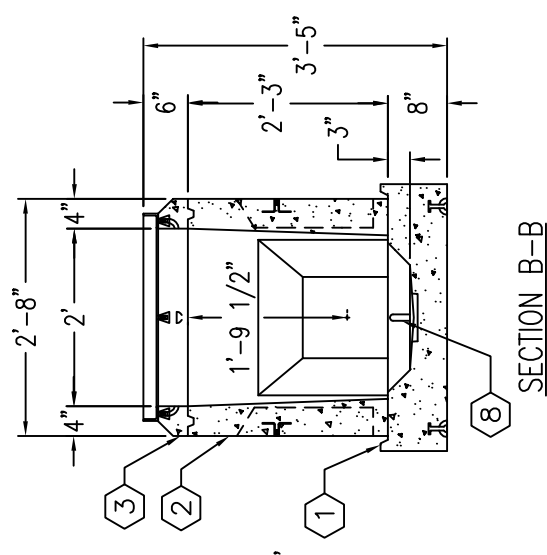


PLAN VIEW BOTTOM SECTION

PLAN VIEW TOP SECTION



SECTION A-A



SECTION B-B