

6' x 10' x 7'

DUCTED VAULT

MODEL K610-DV84-12

L.A.D.W.P. SPEC.
G-284 G2

NOTES:

STRUCTURE DESIGNED IN ACCORDANCE WITH:
AASHTO H-20 TRAFFIC BRIDGE LOADING
ASTM C-857 STANDARD PRACTICE FOR MINIMUM STRUCTURAL DESIGN LOADING FOR UNDERGROUND PRECAST CONCRETE UTILITY STRUCTURES

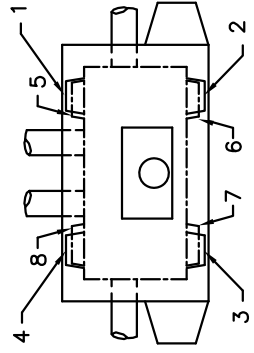
AMERICAN CONCRETE INSTITUTE ACI 318-05

CONCRETE COMPRESSIVE STRENGTH $f'_c = 5500$ PSI

REINFORCEMENT IN ACCORDANCE WITH ASTM A-706 WITH A YIELD STRENGTH OF $F_y = 60,000$ PSI.

6" MINIMUM COMPACTED GRANULAR MATERIAL RECOMMENDED FOR SUB-BASE FOR EASE OF INSTALLATION AND EVEN LOAD DISTRIBUTION.

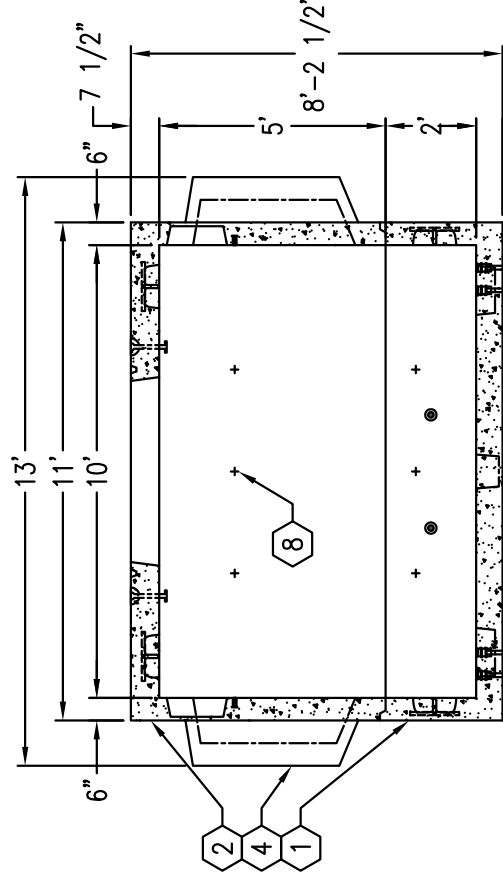
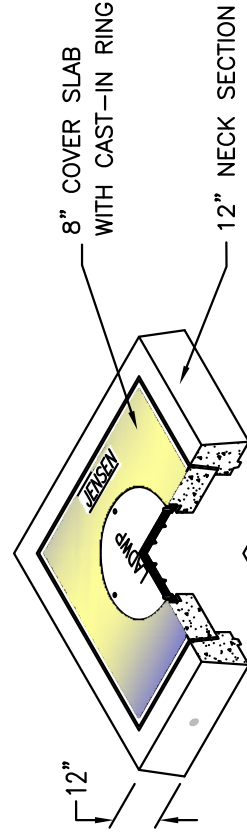
1. UV610-B24-12, 24" BOTTOM SECTION, WT. 12,156 lbs.
2. UV610-T60-12, 60" TOP SECTION, WT. 16,754 lbs.
3. 8" DIA. x 9" DIA. SUMP x 6" DEEP.
4. 24" x 36" DUCTED KNOCKOUT x 12" DEEP.
5. 1" DIA. TERMS FOR GROUND ROD.
6. 14" DIA. x 16" DIA. VENT KNOCKOUT x 5" DEEP.
7. 7/8" DIA. GALVANIZED PULL IRON.
8. 1/2" DIA. RECESS.
- 9.



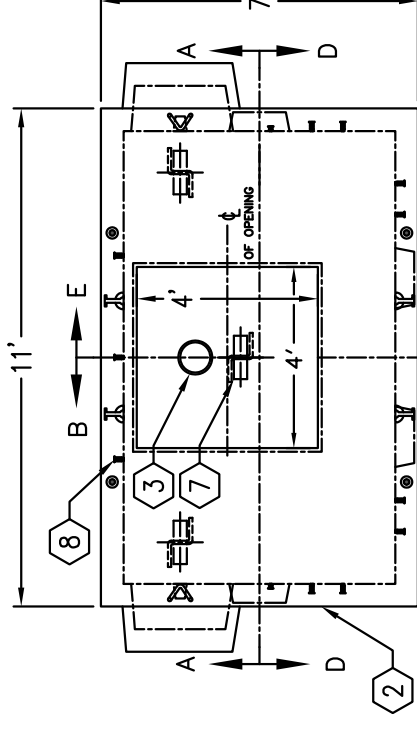
VENT & DUCT
KNOCKOUT ORDERING DIAGRAM

WHEN ORDERING SPECIFY DESIRED DUCT AND VENT LOCATIONS PER DIAGRAM NOTATIONS. (OMIT K.O.'S SHOWN WHEN NOT ORDERED).

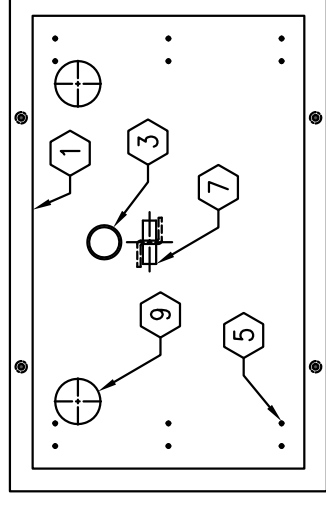
48" x 48" RISER
6" AND 12" AVAILABLE



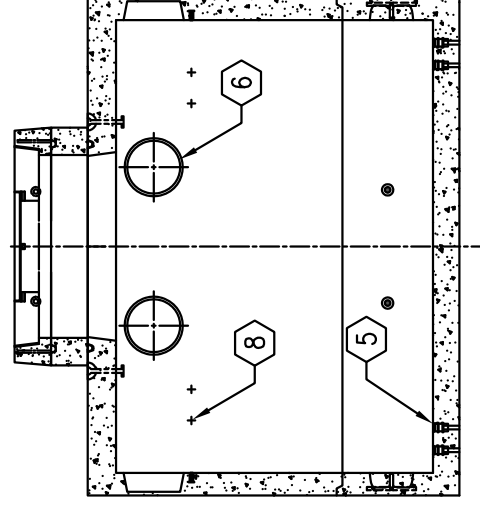
SECTION A-A



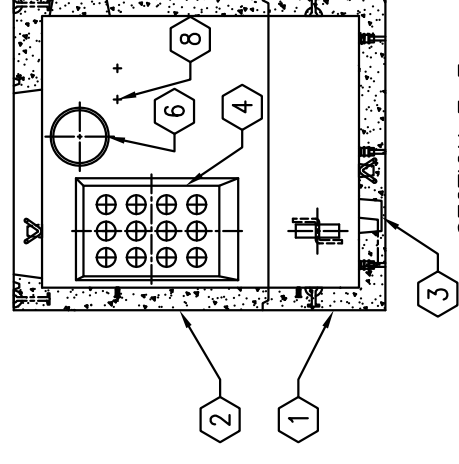
PLAN VIEW



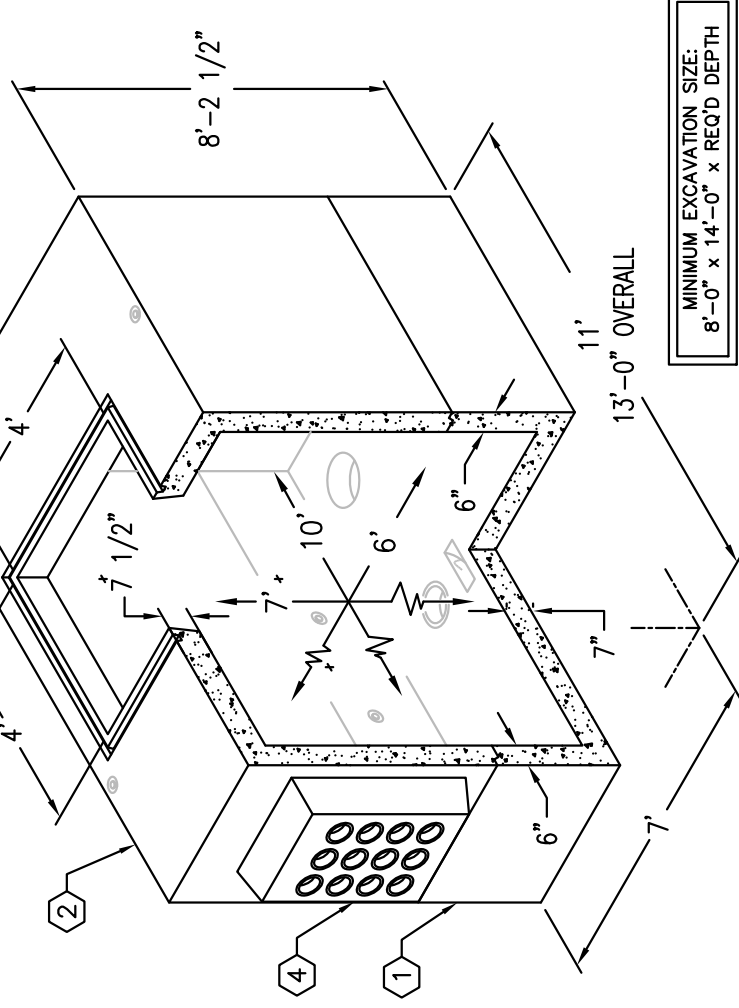
BOTTOM PLAN VIEW



SECTION D-D



SECTION E-E



MINIMUM EXCAVATION SIZE:
8'-0" x 14'-0" x REQ'D DEPTH

6' x 10' x 7'

DUCTED VAULT

MODEL K610-DV84-12

L.A.D.W.P. SPEC.
G-284 G2